

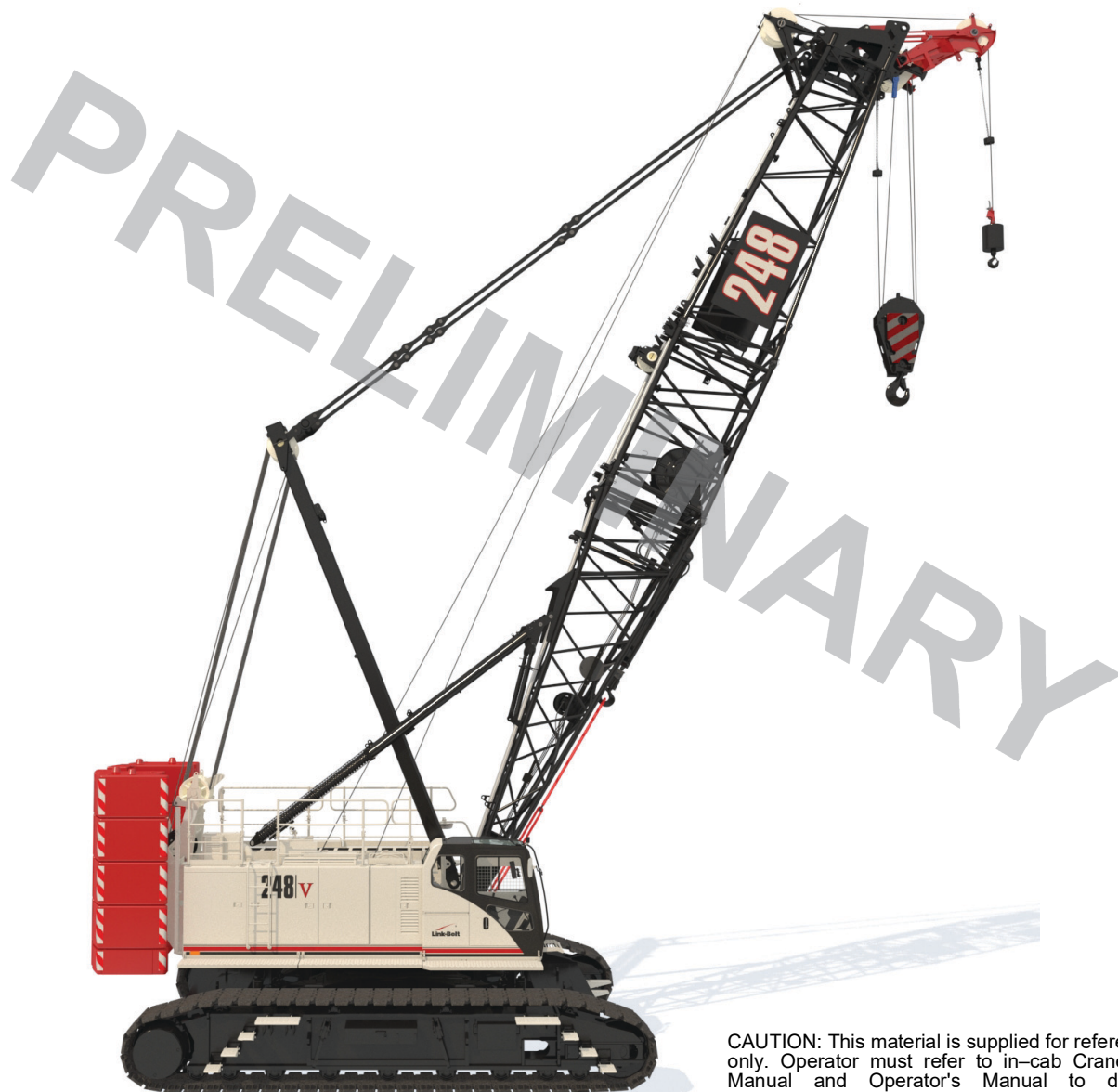
Technical Data

Specifications & Capacities

248|V

HSL Crawler Crane

200 Ton (181 metric ton)



CAUTION: This material is supplied for reference use only. Operator must refer to in-cab Crane Rating Manual and Operator's Manual to determine allowable crane lifting capacities and assembly and operating procedures.

This Page Intentionally Blank

Table Of Content

| | |
|--|-----------|
| Upper Structure | 1 |
| Frame | 1 |
| Engine | 1 |
| Hydraulic System | 1 |
| Load Hoist Drums | 1 |
| Boom Hoist Drum | 1 |
| Boom Hoist System | 1 |
| Swing System | 2 |
| Counterweight | 2 |
| Operator's Cab | 2 |
| Load Moment Indicator System | 2 |
| Machinery House | 2 |
| Catwalks | 2 |
| Auxiliary Power Unit (APU) | 2 |
| Lower Structure | 3 |
| Carbody | 3 |
| Side Frames | 3 |
| Counterweight | 3 |
| Travel and Steering | 3 |
| Jack System | 3 |
| Attachment and Options | 4 |
| Conventional Boom 55–275 ft (16.8–83.8m) | 4 |
| Heavy Duty Tip Extension | 4 |
| Third Hoist Drum | 4 |
| Tubular Jib 30–100 ft (9.1–30.5m) | 4 |
| Dimensions | 5 |
| Base Crane | 7 |
| Side Frames | 7 |
| Upper Counterweights | 8 |
| Upper Counterweights Configurations | 9 |
| Lower Counterweights | 9 |
| Heavy Wall Boom | 11 |
| Light Wall Boom | 12 |
| Fixed Jib | 13 |
| Hook Balls | 14 |
| Hook Blocks | 14 |
| Working Weights | 15 |
| Transport Weights | 16 |
| Transport Drawings | 17 |
| Load Hoist Performance | 20 |
| Working Areas | 21 |
| Attachments | 22 |
| Main Boom Make- up | 23 |
| Main Boom Working Range Diagram | 24 |

| | |
|--|-----------|
| Main Boom Load Charts – Imperial | 25 |
| Main Boom Load Charts – Metric | 27 |
| Jib Attachment Working Range Diagram | 29 |
| Jib Attachment Load Charts – Imperial | 30 |
| Main Boom + 30 ft Offset Tube Jib – 360° | 30 |
| Main Boom + 60 ft Offset Tube Jib – 360° | 31 |
| Main Boom + 100 ft Offset Tube Jib – 360° | 32 |
| Jib Attachment Load Charts – Metric | 33 |
| Main Boom + 9.1m Offset Tube Jib – 360° | 33 |
| Main Boom + 18.3m Offset Tube Jib – 360° | 34 |
| Main Boom + 30.5m Offset Tube Jib – 360° | 35 |

Upper Structure

Frame

All welded and precision machined surfaces for mating parts.

Turntable Bearing

- Inner race with internal swing gear is bolted to lower frame.
- Outer race is bolted to upper frame.

Engine

Engine

- Full pressure lubrication, oil filter, air cleaner, throttle, and electric control shutdown
 - Electric engine block preheater
- Centralized accessible, fuel, oil, and air filters

| Cummins QSB6.7 Stage V/Tier 4 Final | |
|--|--------------------------------|
| Number of cylinders | 6 |
| Bore and stroke | 4.20 x 4.88 in (107 x 124mm) |
| Piston displacement | 408 in ³ (6.7L) |
| Engine rpm at full load speed | 2,000 rpm |
| Hi-idle rpm | 800 rpm |
| Gross engine hp | 282 hp (210kw) |
| Peak torque | 950 ft lb (1288Nm) @ 1,500 rpm |
| Electrical system | 24 volt |
| Fuel tank capacity | 118 gal (450L) |
| Batteries | 2- 12 volt |
| <ul style="list-style-type: none"> • Water/fuel separator with heater and water in fuel sensor • 120-volt block heater • Grid heater – 200 amp • Can only be sold and /or operated where Stage V/Tier 4f off-high way emission standards are accepted. | |

Fuel Tank

118 gal (450L) equipped with fuel sight level gauges, flame arrester, and self-closing cap with door lock.

One 22.4 gal (85L) capacity DEF tank.

Alternator

Equipped with a large-capacity, 140A alternator.

Hydraulic System

Hydraulic Pumps

The pump arrangement is designed to provide hydraulically powered functions allowing positive, precise control with in-dependent or simultaneous operation of all crane functions.

- Two variable displacement pumps operating at 4,553 psi (320kg/cm²) and 70.3 gal/min (266L/min) powers load hoist drums, boom hoist drum, optional third drum, and travel.
- One variable displacement pump operating at 2,987 psi (210kg/cm²) and 40.2 gal/min (152L/min) powers the swing motors, lower jacks, counterweight removal.
- One fixed displacement gear type pump operating at 1,422 psi (100kg/cm²) and 10.3 gal/min (39L/min) powers the pilot control system, brakes, and pump controls.

Two fixed displacement gear type pumps operating at 10.3 gal/min (39L/min) powers the hoist brake cooling system.

Hydraulic Reservoir

84.5 gal (320L), equipped with sight level gauge. Diffusers built in for deaeration.

Filtration

Ten micron, full flow, line filter in the control circuit. Oil is filtered prior to entering the reservoir.

Counterbalance Valves

All hoist motors are equipped with counterbalance valves to provide positive load lowering and prevent accidental load drop if the hydraulic pressure is suddenly lost.

Load Hoist Drums

Each drum contains an axial piston variable speed hydraulic motor with individual automatic winch motor brakes. Power flow is directed through a "wet" style multi-disc brake.

- Eco winch mode
- Fine tuning
- Grooved lagging
- Power up/down & free fall operation
- Drum pawls controlled manually
- Electronic drum rotation indicators
- Automatic brake mode (spring applied, hydraulically released, wet type brake)
- Hoist drum cable follower – standard
- Drum diameter: 22.8 in (58cm)
- Drum Width: 25.26 in (64.16cm)
- Flange Diameter: 37.80 in (96.01cm)
- Rope length:

Main & Auxiliary: 1185 ft (361.2m)

Boom Hoist Drum

Contains a pilot controlled, bi-directional, axial piston motor and a planetary gear reduction unit to provide positive control under all load conditions.

- Spring applied, hydraulically released, disc type brake controlled automatically
- Drum lagging grooved for wire rope
- Electronic drum rotation indicators
- Drum pawl controlled automatically
- Mounted on anti-friction bearings
- 20.89 in (53.06cm) root diameter
- 36.22 in (92.00cm) flange diameter
- 13.42 in (34.08cm) width
- Rope length: 850 ft (259.08m)

Boom Hoist System

Designed to lift off maximum boom or maximum boom plus jib or luffer unassisted. Operates up to a maximum boom angle of 81° for conventional boom and 88° for luffing boom. Boom hoist limit system limits maximum boom angle operation.

- Pin-on bail frame
 - 18-part reeving with 7/8 in (22mm) wire rope
 - 27 ft (8.23m) live mast
 - Tubular boom backstops (telescopic type)
- Sheaves contain sealed anti-friction bearings

Swing System

Pilot controlled bi-directional axial piston motors and planetary gear reduction units to provide positive control under all load conditions.

- Spring applied, hydraulically released, 360° multi-plate brake
- Free swing mode when lever is in neutral position
- Four position positive house lock
- Two-speed swing
- Audio swing alarm
- Maximum swing speed is 1.7 rpm

Counterweight

Upper counterweight consists of a nine piece counterweight sensing design that can be easily lowered to the ground using the removal cylinders.

- "A" upper counterweight consists of one 24,700 lb (11 204kg) base slab.
- "B" upper counterweight consists of one 15,000 lb (6 804kg) and one 14,200 lb (6 441kg) wing weights.
- "C" upper counterweight consists of one 15,000 lb (6 804kg) and one 14,200 lb (6 441kg) wing weights.
- "D" upper counterweight consists of one 15,000 lb (6 804kg) and one 14,200 lb (6 441kg) wing weights.
- "E" upper counterweight consists of one 15,000 lb (6 804kg) and one 14,200 lb (6 441kg) wing weights.

Total combined upper counterweight "ABCDE" is 141,500 lb (64 183kg).

- Wired remote control counterweight installation and removal
- Counterweight sensing

Operator's Cab

Fully enclosed modular steel compartment is independently mounted and padded to protect against vibration and noise.

- All tinted/tempered safety glass
- Sliding entry door and rear window
- Front windshield and top hatch wipers and washers
- Door and window locks
- 18,750 BTU/hr hot water heater
- 15,880 BTU/hr air conditioner
- Defroster
- Adjustable sun visor
- Cup holder
- Six way adjustable, heated cushioned seat with seat belt
- Fire extinguisher
- Electronic drum rotation indicators for front and rear hoist drums
- Four position travel swing lock
- Hand and Foot Throttle Control
- Ergonomic foot pedals
- Fully adjustable pilot pressure
- Single axis controls
- Free fall pedals (front & rear drum)
- Bubble type level
- Ergonomic switch layout
- Emergency-stop Button
- Monitor for rear view, winch view, and right side cameras
- AM/FM/Bluetooth radio
- Optional external load moment limiter light bar

Load Moment Indicator System

The Load moment limiter system is a total crane operating system that utilizes a 12 in (30.5cm) touch screen color display with geometrical data, engine data, advanced diagnostics and systems monitoring. The system provides the operator with:

- Main boom length
- Main boom angle
- Jib length
- Jib angle
- Luffer length
- Luffer angle
- Operating mode
- Load radii
- Boom tip height
- List and trim angle
- Slew angle
- Audible alarms
- Counterweight sensing
- Load on hook
- Rated capacity by %
- Overload light
- Live/simulated ground bearing pressure include:
 - Main boom
 - Fixed Jib
 - Luffer
- Function kick-outs to include over load
- Operator settable stops (ramped stops)
- Anti-Two block line alarm(s)/kickout(s)
- Boom Hoist dead end load cell (no line riders)
- Engine monitoring
- Advances diagnostics
- List capacities for 1°, 2°, 3°, and 5°
- Telematics – Cellular-based data logging and monitoring system that provides:
 - Location and operational settings
 - Routine maintenance
 - Crane and engine monitoring
 - Diagnostic and fault codes
 - Load on hook

Machinery House

- Hinged doors with sound pad insulation (four on right left side, five on left side) for machinery access
- Simple folding guard rails for reduced transport height
- Storage/rigging box mounted on operator's side of upper house
- Centralized electrical locations
- Upper centralized grease banks
- Fall arrest anchors
- LED work lights
- Power pack mounting lugs
- Optional power unit mounting brackets
- Optional Upper house mounted lighting package

Catwalks

Extra wide catwalks that fold up and pin for reduced travel width

Auxiliary Power Unit (APU)

Optional HVAC Auxiliary Power Unit – Designed to maintain optimal cab temperature (cooling or heating as needed) while supplying power to the load moment indicator display, internal and external lighting, camera systems, and radio.

Lower Structure

Carbody

Lower Frame

All welded construction frame with precision machined surfaces for turntable bearing and rotating joint.

- 12 ft 4.8 in (3.78m) overall width
- 15 ft 10.3in (4.83m) overall length

Side Frames

Side Frames

All welded, precision machined, wired remote control hydraulic hook and pin steel frames

- 18 ft 10 in (5.74m) gauge
- 27 ft 3.1 in (8.31m) overall length
- 44 in (1.12m) wide track shoes
- Sealed (oil filled) drive planetaries
- Compact travel drives
- Automatic hydraulic track adjustment system – optional
- Adjustable swing boundary
- Lockable tool boxes

Track Rollers

- Eleven sealed (oil filled) track rollers per side frame
- Heat treated, mounted on oil filled anti-friction bearings

Tracks

Heat treated, self-cleaning, multiple hinged track shoes joined by one-piece full floating pins; 54 shoes per side frame

Take Up Idlers

Cast steel, heat treated, self-cleaning, mounted on aluminum/bronze bushings. Lubricated through idler shaft.

Track Tension Adjustment – Idler wheel adjusted by means of hydraulic cylinder and hand pump. Idler wheel shaft held in position with shims after adjustment is made.

Counterweight

Lower counterweight consists of two 17,600 lb (7 983kg) hook and pin carbody counterweights that attach to the jack arms.

- Each counterweights have stowable steps on each side (front & back) for upper access
- Counterweight sensing

Travel and Steering

Each side frame contains a pilot con-trolled, bi-directional, axial piston motor and a planetary gear reduction unit to provide positive control under all load conditions.

- Individual control provides smooth, precise maneuverability including full counter-rotation.
- Spring applied, hydraulically released disc type brake controlled automatically
- Maximum travel speed is 1.2 mph (1.9km/h).
- Designed to 30% gradeability

Jack System

System contains four hydraulic cylinders individually pinned on swing out beams.

- Wired remote control for controlling height of each individual jack
- Minimum height of carbody when resting on pontoons is 18.5 in (0.47m).
- Maximum height of carbody when resting on pontoons is 39.5 in (1.00m).

Maximum Ground Bearing Pressure from jack's Pontoons (on firm ground): 14.09 PSI (0.99kg/cm²)

Attachment and Options

Conventional Boom 55–275 ft (16.8–83.8m)

Basic Boom

55 ft (16.76m) three piece design that utilizes a 25 ft (7.62m) base section 10 ft JN3 (3.04m) extension, and a 20 ft (6.09m) combo top section with in-line connecting pins on 80 in (2.03m) wide and 68 in (1.73m) deep centers.

Basic Boom 25 ft (7.62m) Base Section

- Quick draw self-assembly cylinder
- Reeving winch
- Boom walkways
- Lugs for transport links
- Polyethylene wear blocks on top of each extension
- Bar pendants storage brackets
- Welded brackets for stowing optional luffing bar pendants
- Pin Catchers
- Boom foot on 53.15 in (1.35m) centers
- 4 in (10.16cm) diameter chords
- Optional remote controlled high intensity

Basic Boom 10 ft JN3 (3.04m) Extension

- Boom walkways
- Lifting lugs
- Polyethylene wear blocks on top of each extension
- Bar pendants storage brackets
- Welded brackets for stowing optional luffing bar pendants
- Standard welded lugs for 3rd drum mounting
- Pin Catchers
- 4 in (10.16cm) diameter chords
- Welded mount for 3rd drum
- Optional 3rd drum with wire rope

Basic Boom 20 ft (6.09m) Combo Top Section

- Mounts heavy duty tip extension, pile driving leads, fixed jib, or luffing attachment
- Boom walkways
- Lifting lugs
- Polyethylene wear blocks on top of each extension
- Bar pendants storage brackets
- Welded brackets for stowing optional luffing bar pendants
- Pin Catchers
- 4 in (10.16cm) diameter chords
- 3-sheave idler on top section
- Replaceable standing pads mounted on the base of combo top section to protect head machinery
- Five 21.53 in (54.69cm) root diameter nylon sheaves mounted on sealed anti-friction bearings
- Tip extension and jib connecting lugs on top section
- Electrical connections for main boom and fixed jib applications
- Wired wind speed indicator
- Anti-two block hardware
- Optional steel sheaves

Tube Boom Extensions

- The following table provides the lengths available and the suggested quantity to obtain maximum boom. Optional midpoint pendant connections are required for boom lengths of 255 ft (77.72m) and longer.

| Type | Tube Boom Extensions | | Qty For Max Boom |
|------|----------------------|-------|------------------|
| | ft | m | |
| FE | 20 | 6.10 | 1 |
| | 30 | 9.14 | 1 |
| | 40 | 12.19 | 1 |
| JN3 | 10 | 3.05 | 1 |
| JE3 | 20 | 6.10 | 2 |
| | 30 | 9.14 | 1 |
| | 40 | 12.19 | 2 |

- Boom walkways
- Lifting lugs
- Polyethylene wear blocks on top of each extensions
- Boom connecting pins storage on each extension
- Appropriate length bar pendants stored on each extension
- Bar pendant storage brackets
- Welded brackets for stowing optional luffing bar pendants
- Pin Catchers
- 4 in (10.16cm) diameter chords
- The maximum tip height of 275 ft (83.82m) tube boom is 279 ft (85.14m)

Heavy Duty Tip Extension

This option is designed to use in place of jib to provide clearance between working hoist lines. The extension is equipped with a single 21.53 in (54.69cm) root diameter nylon sheave. Steel sheave optional. Mounted on sealed anti-friction bearings. Maximum capacity is 30 Ton (27.2mt)

Third Hoist Drum

This option mounts in the optional 10 ft JN3 extension and is used in conjunction with a fleeting sheave and 3-sheave idler assembly to run the wire rope over the boom top section

- Power up/down for luffing applications where a third load line is needed
- Mounted on anti-friction bearings
- Drum pawls controlled automatic
- Electronic drum rotation indicators
- Automatic brake mode (spring applied, hydraulically released, wet type brake)
- 21.8 in (55.4cm) root diameter
- 37.8 in (960cm) flange diameter
- 25.3 in (64.2cm) width
- Rope length: 850 ft (259.1m)

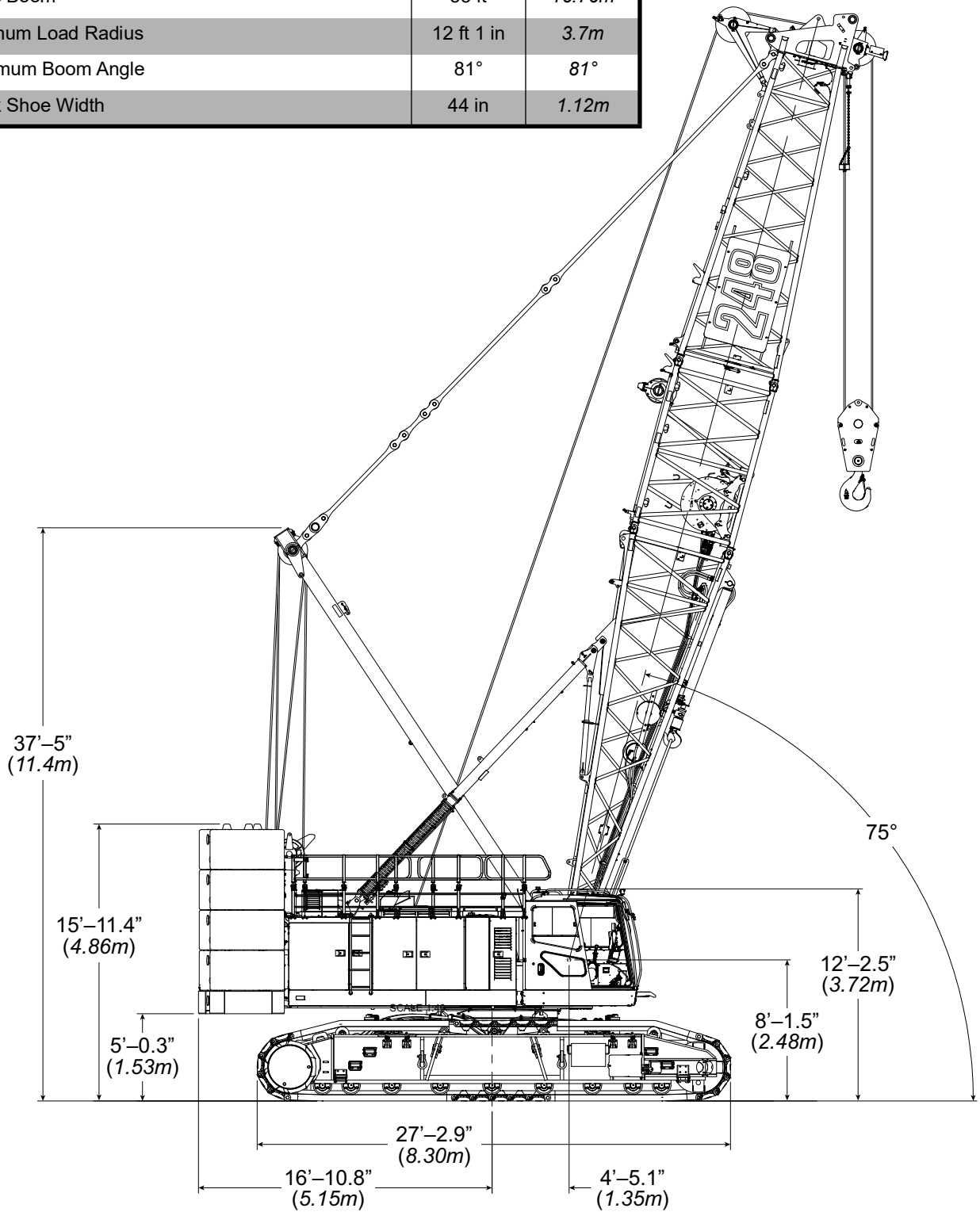
Tubular Jib 30–100 ft (9.1–30.5m)

Optional 30 ft (9.14m) two-piece design that utilizes a 15 ft (4.57m) base section and a 15 ft (4.57m) top section with in-line connecting pins on 32 in (0.81m) wide and 24 in (0.61m) deep centers.

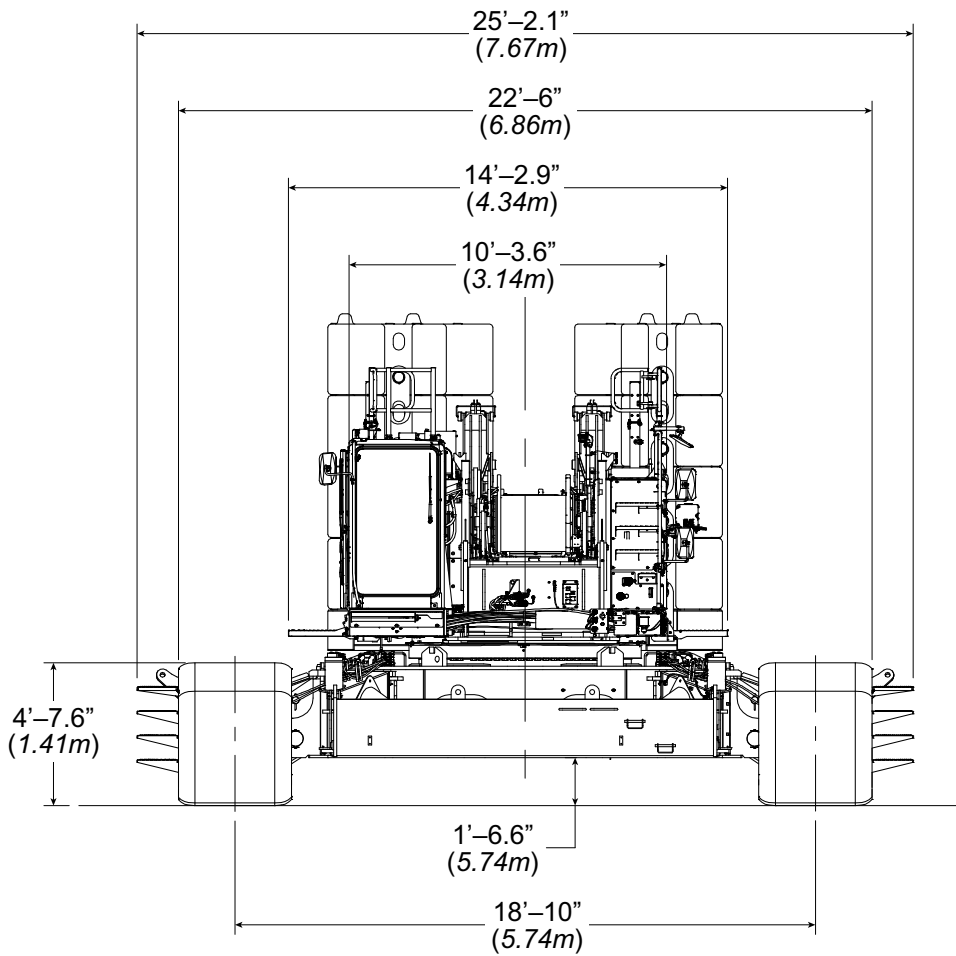
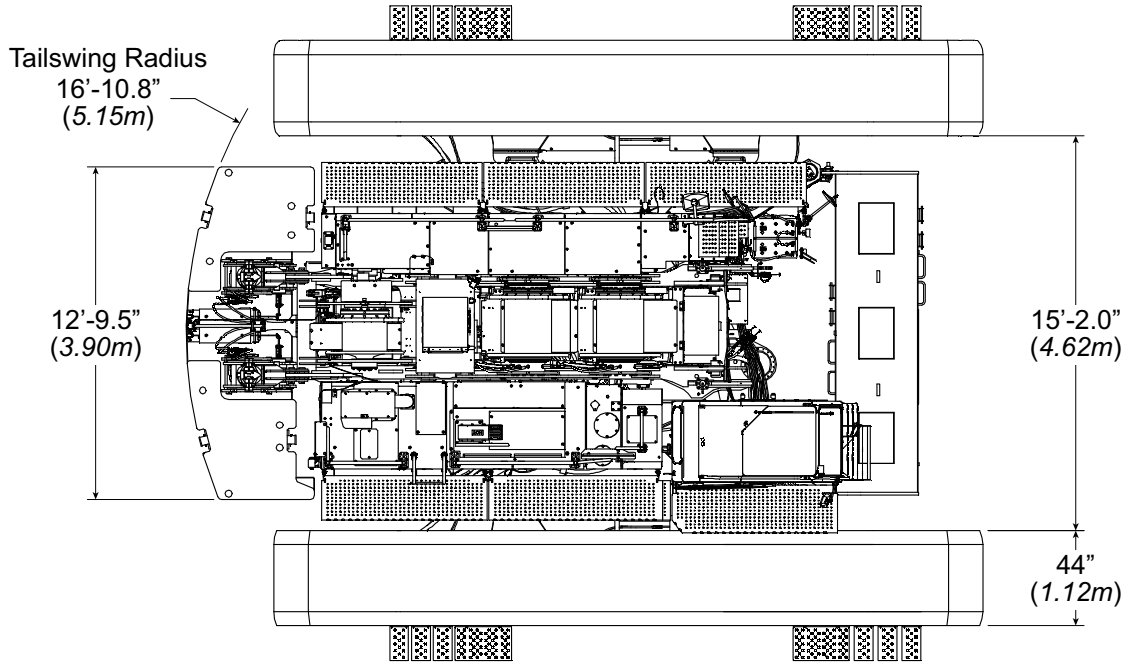
- 2.25 in (57.15mm) diameter tubular chords
- One 21.12 in (53.66cm) root diameter steel sheave mounted on sealed anti-friction bearings
- 10 ft (3.05m) and 20 ft (6.10m) jib extensions provide jib lengths of 40 ft (12.19m) to 100 ft (30.48m) in 10 ft (3.05m) increments for tube boom.
- Jib offset angles at 5°, 15°, and 25°
- The maximum tip height of tube boom + jib [245 ft + 100 ft (74.68 + 30.48m)] is 347 ft (105.76m)
- Wired wind speed indicator
- Wire rope pendants stow on jib sections
- Anti-two block hardware

Dimensions

| General Dimensions | English | Metric |
|---------------------|------------|--------|
| Basic Boom | 55 ft | 16.76m |
| Minimum Load Radius | 12 ft 1 in | 3.7m |
| Maximum Boom Angle | 81° | 81° |
| Track Shoe Width | 44 in | 1.12m |



Not To Scale



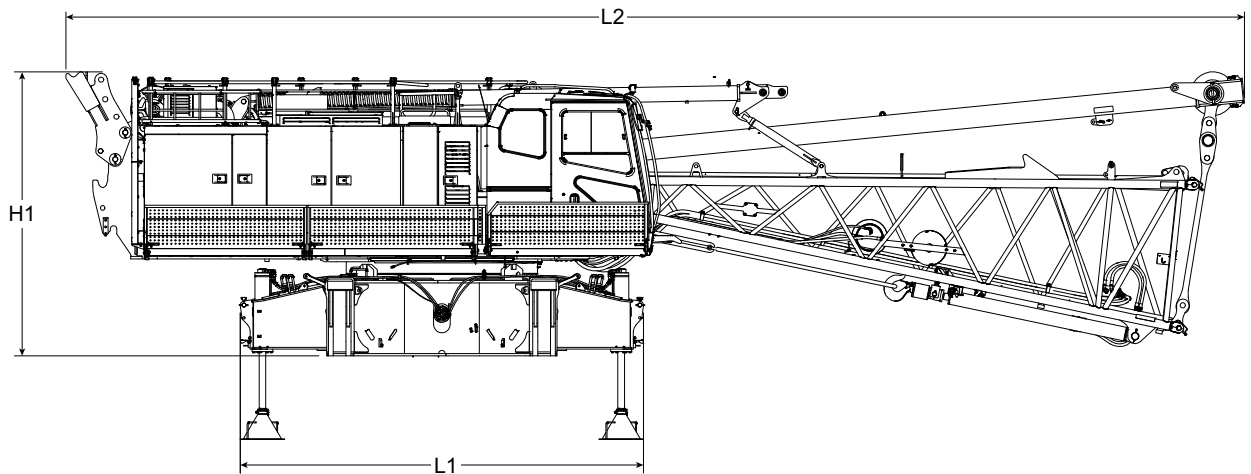
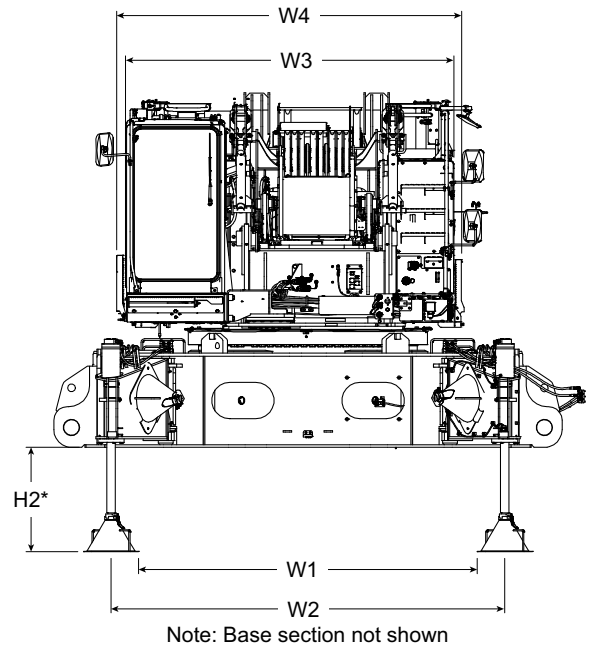
Base Crane

Base Crane

①

| | | |
|----------|---------------|------------|
| Length 1 | 15 ft 10.3 in | (4.83m) |
| Length 2 | 46ft 4.1in | (14.13m) |
| Width 1 | 10 ft 8 in | (3.25m) |
| Width 2 | 12 ft 4.8 in | (3.78m) |
| Width 3 | 10 ft 4 in | (3.15m) |
| Width 4 | 10 ft 10.4 in | (3.31m) |
| Height 1 | 11 ft 2 in | (3.40m) |
| Height 2 | 3 ft 3.5 in | (1.00m) |
| Weight* | 90,632 | (41 111kg) |

*Include: 850 ft (259.08m) of 7/8 in (22mm) "FC" rope (boom hoist)
 1,185 ft (361.2m) of 1.02 in (26mm) "KC" rope (rear hoist)
 1,185 ft (361.2m) of 1.02 in (26mm) "KC" rope (front hoist)
 25 ft (7.62m) base section with reeving winch and self-assembly cylinder
 Backstops and live mast

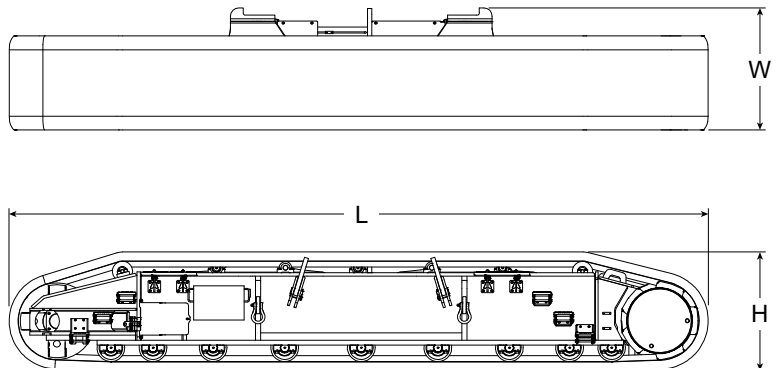


Side Frames

With 44 in (1.12m) Track Shoe

②

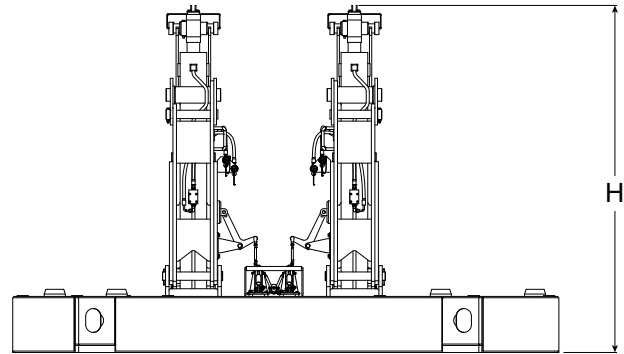
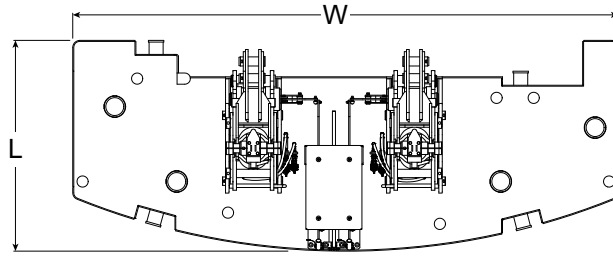
| | | |
|--------|--------------|------------|
| Length | 27 ft 3.1 in | (8.31m) |
| Width | 4ft 9.1in | (1.45m) |
| Height | 4 ft 7.6in | (1.41m) |
| Weight | 41,683 | (18 907kg) |



Upper Counterweights

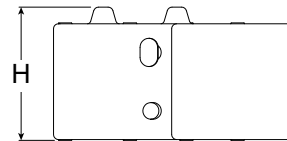
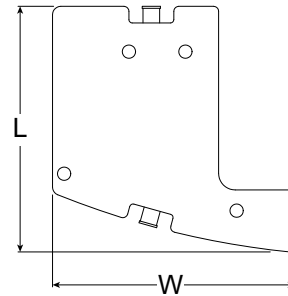
Base Counterweight ①

| | | |
|--------|-----------|------------|
| Length | 59.24" | (1.50m) |
| Width | 12'-9.54" | (3.90m) |
| Height | 8'-1.56" | (2.48m) |
| Weight | 24,700lb | (11 204kg) |



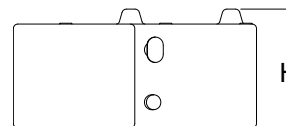
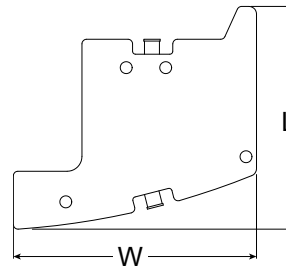
Left Wing Counterweight ④

| | | |
|--------|----------|-----------|
| Length | 58.20" | (1.48m) |
| Width | 57.48" | (1.46m) |
| Height | 31.57" | (0.80m) |
| Weight | 15,000lb | (6 804kg) |



Right Wing Counterweight ④

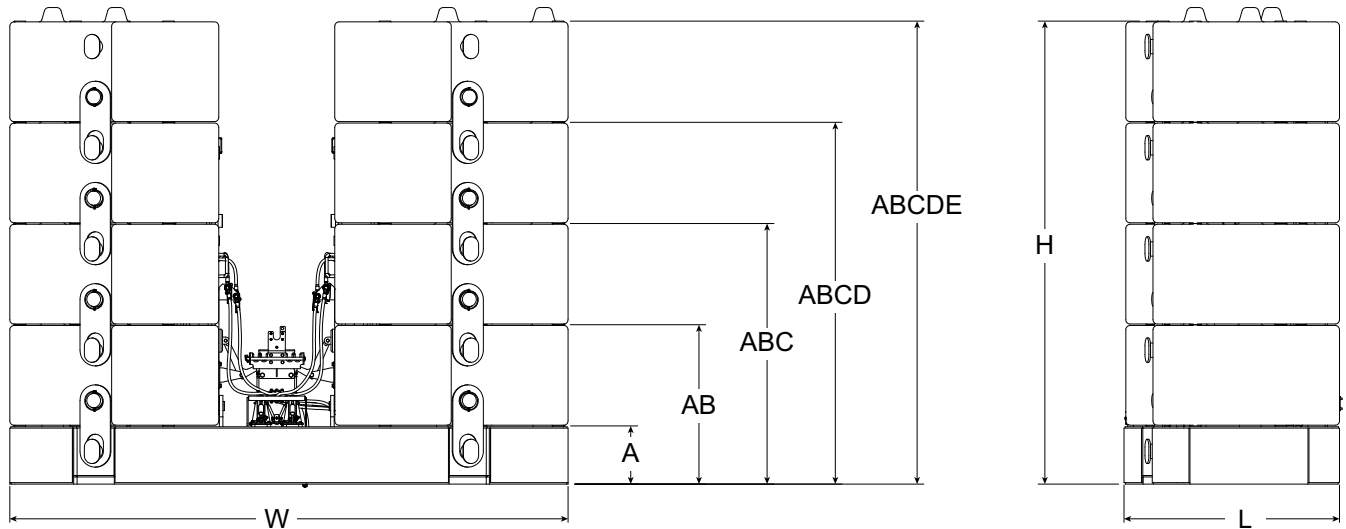
| | | |
|--------|----------|-----------|
| Length | 57.78" | (1.47m) |
| Width | 64.17" | (1.63m) |
| Height | 31.57" | (0.80m) |
| Weight | 14,200lb | (6 441kg) |



Upper Counterweights Configurations

Upper Counterweight ④

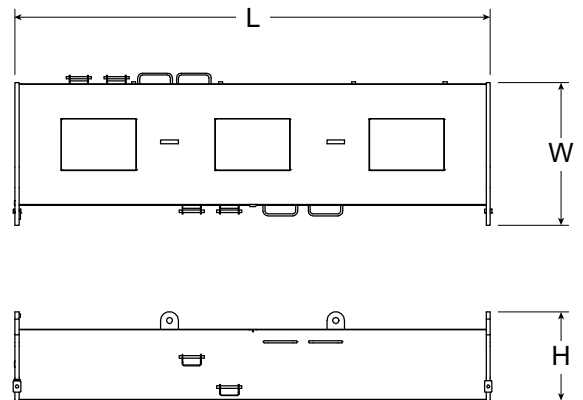
| | | |
|--------|---------------|------------|
| Length | 59.25 in | (3.79m) |
| Width | 12 ft 9.54 in | (3.90m) |
| Height | 10 ft 7.32 in | (3.23m) |
| Weight | 141,500lb | (64 183kg) |



Lower Counterweights

Base Counterweight ②

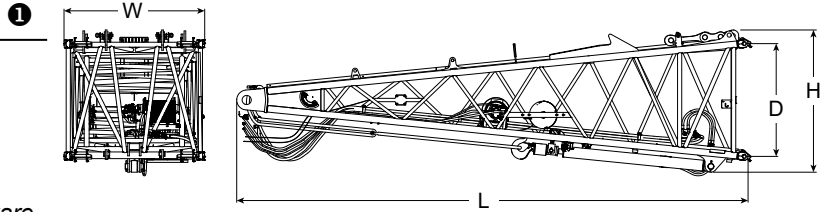
| | | |
|--------|---------------|-----------|
| Length | 12 ft 5.21 in | (3.79m) |
| Width | 44.88 in | (1.14m) |
| Height | 27.87 in | (0.71m) |
| Weight | 17,600lb | (7 983kg) |



25 ft (7.62m) Boom Base Section

| | | |
|--------|---------------|-----------|
| Length | 25 ft 8.30 in | (7.83m) |
| Width | 84.82 in | (2.15m) |
| Deep | 68 in | (1.73m) |
| Height | 85.73 in | (2.18m) |
| Weight | 5,789 lb | (2 625kg) |

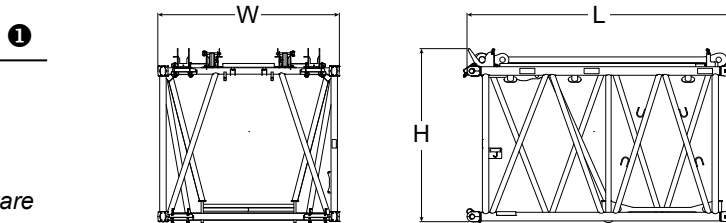
Weight includes Walkway, Pendants, and Hardware



10 ft (3.05m) Heavy Wall JN3 Extension

| | | |
|--------|---------------|------------|
| Length | 10 ft 4.62 in | (3.16m) |
| Width | 84.82 in | (2.15m) |
| Height | 81.07 in | (2.06m) |
| Weight | 2,125.5 lb | (964.11kg) |

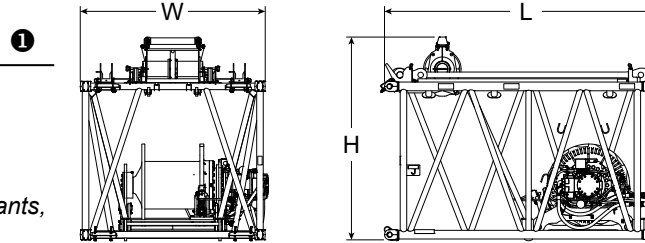
Weight includes Walkway, Pendants, and Hardware



10 ft (3.05m) Heavy Wall JN3 Third Drum Extension*

| | | |
|--------|---------------|-----------|
| Length | 10 ft 4.62 in | (3.16m) |
| Width | 84.82 in | (2.15m) |
| Height | 93.00 in | (2.36m) |
| Weight | 10,597 lb | (4 807kg) |

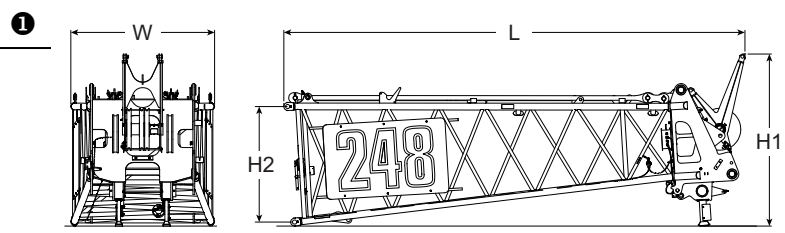
Weight includes 3rd Drum, Wire Rope, Walkway, Pendants, and Hardware



20 ft (6.10m) Heavy Duty Boom Top Section

| | | |
|----------------------------|---------------|-----------|
| Length | 10 ft 4.62 in | (6.88m) |
| Width | 84.82 in | (2.14m) |
| Height 1 | 8 ft 5.06 in | (2.57m) |
| Height 2 | 67.88 in | (1.72m) |
| Weight with nylon sheaves | 5,789 lb | (2 626kg) |
| Weight with steel sheaves* | 7,932 lb | (3 612kg) |

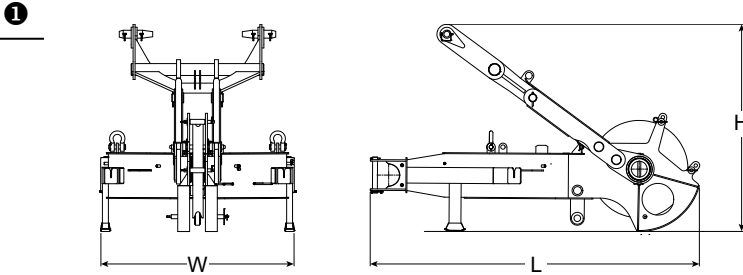
Weight includes Walkway, Pendants, and Hardware



Heavy Duty Tip Extension*

| | | |
|----------------------------|----------|---------|
| Length | 68.38 in | (1.74m) |
| Width | 23.00 in | (0.58m) |
| Height 1 | 41.12 in | (1.04m) |
| Weight with nylon sheaves | 962 lb | (436kg) |
| Weight with steel sheaves* | 1,279 lb | (580kg) |

Weight includes Walkway, Pendants, and Hardware



Number inside black circle "1" = # of components

* – Optional equipment

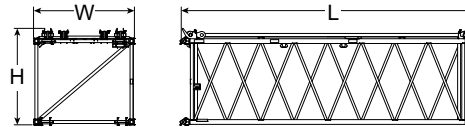
Heavy Wall Boom

Heavy Wall Boom 68 in (1.73m) x 80in (2.03m) Extensions “JE3”

Weight includes Walkway, Pendants, and Hardware

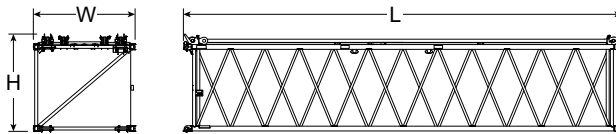
20 ft (6.10m) Extension* ①

| | | |
|--------|---------------|-------------|
| Length | 20 ft-5.31 in | (6.23m) |
| Width | 84.82 in | (2.15m) |
| Height | 81.07 in | (2.06m) |
| Weight | 2,562.3 lb | (1 162.2kg) |



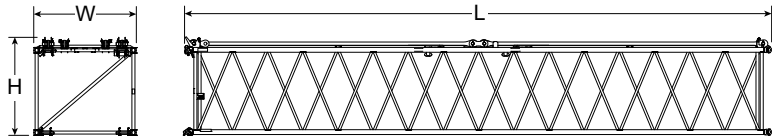
30 ft (9.14m) Extension* ①

| | | |
|--------|---------------|-----------|
| Length | 30 ft-5.31 in | (9.28m) |
| Width | 84.82 in | (2.15m) |
| Height | 81.07 in | (2.06m) |
| Weight | 3,593.5 lb | (1 630kg) |



40 ft (12.19m) Extension* ①

| | | |
|--------|---------------|-------------|
| Length | 40 ft-5.31 in | (12.33m) |
| Width | 84.82 in | (2.15m) |
| Height | 81.07 in | (2.06m) |
| Weight | 4,793.5 lb | (2 174.3kg) |



Number inside black circle “①” = # of components

* – Optional equipment

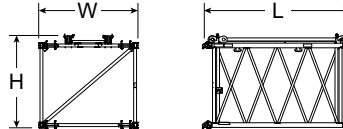
Light Wall Boom

Light Wall Boom 68 in (1.73m) x 80in (2.03m) Extensions “FE”

Weight includes Walkway, Pendants, and Hardware

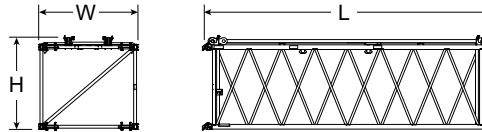
10 ft (3.05m) Extension* ①

| | | |
|--------|---------------|---------|
| Length | 10 ft-4.62 in | (3.16m) |
| Width | 84.82 in | (2.15m) |
| Height | 78.87 in | (2.06m) |
| Weight | 1,263.3 lb | (573kg) |



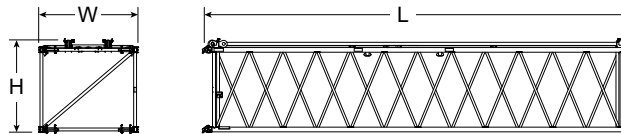
20 ft (6.10m) Extension* ①

| | | |
|--------|---------------|---------|
| Length | 20 ft-4.62 in | (6.23m) |
| Width | 84.82 in | (2.15m) |
| Height | 78.87 in | (2.06m) |
| Weight | 2,147.2 lb | (974kg) |



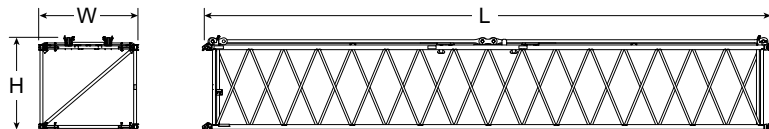
30 ft (9.14m) Extension* ①

| | | |
|--------|---------------|-------------|
| Length | 30 ft-4.62 in | (9.26m) |
| Width | 84.82 in | (2.15m) |
| Height | 78.87 in | (2.06m) |
| Weight | 2,147.2 lb | (1 314.1kg) |



40 ft (12.19m) Extension* ①

| | | |
|--------|---------------|-------------|
| Length | 40 ft-4.62 in | (12.31m) |
| Width | 84.82 in | (2.15m) |
| Height | 78.87 in | (2.06m) |
| Weight | 3,859.8 lb | (1 750.8kg) |



Number inside black circle “①” = # of components

* – Optional equipment

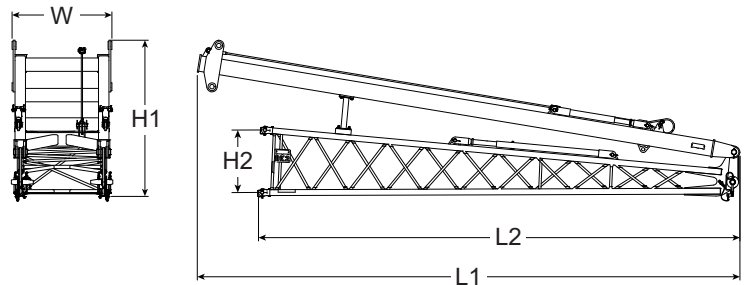
Fixed Jib

15 ft (4.57m) Jib

Base Section* ①

| | | |
|----------|---------------|---------|
| Length 1 | 17 ft 4 in | (5.28m) |
| Length 2 | 15 ft 4.49 in | (4.69m) |
| Width | 38.25 in | (0.97m) |
| Height 1 | 59.81 in | (1.52m) |
| Height 2 | 24 in | (0.61m) |
| Weight | 1,234 lb | (560kg) |

Weight includes backstops, strut, and hardware

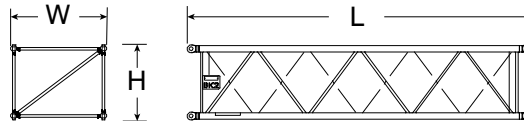


10 ft (3.05m) Jib

BK2 Extension* ①

| | | |
|----------|---------------|-----------|
| Length 1 | 10 ft 2.75 in | (3.12m) |
| Width | 34.77 in | (0.88m) |
| Height | 28.56 in | (0.73m) |
| Weight | 241 lb | (109.3kg) |

Weight includes, pendants, and hardware

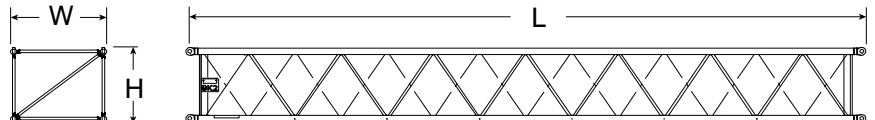


20 ft (6.10m) Jib

BK2 Extension* ①

| | | |
|----------|---------------|-----------|
| Length 1 | 20 ft 2.75 in | (6.17m) |
| Width | 34.77 in | (0.88m) |
| Height | 28.56 in | (0.73m) |
| Weight | 447 lb | (202.8kg) |

Weight includes, pendants, and hardware

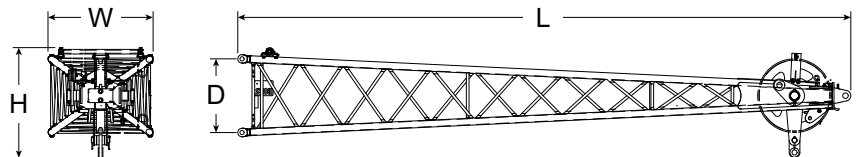


15 ft (4.57m) Jib

Top Section* ①

| | | |
|--------|---------------|---------|
| Length | 16 ft 7.72 in | (5.07m) |
| Width | 34.25 in | (0.87m) |
| Height | 35.91 in | (0.91m) |
| Depth | 24 in | (0.61m) |
| Weight | 631 lb | (286kg) |

Weight includes hardware



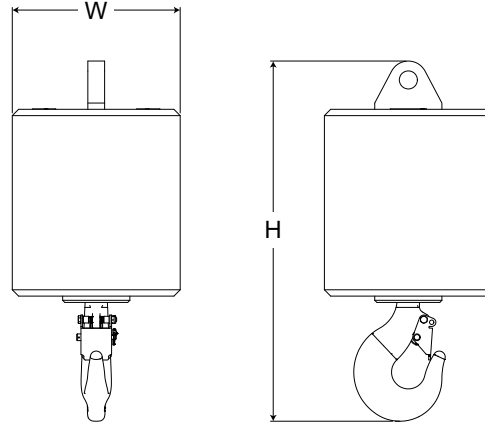
Number inside black circle "①" = # of components

* – Optional equipment

Hook Balls

15 Ton (13.6mt) Swivel Hook Ball* ①

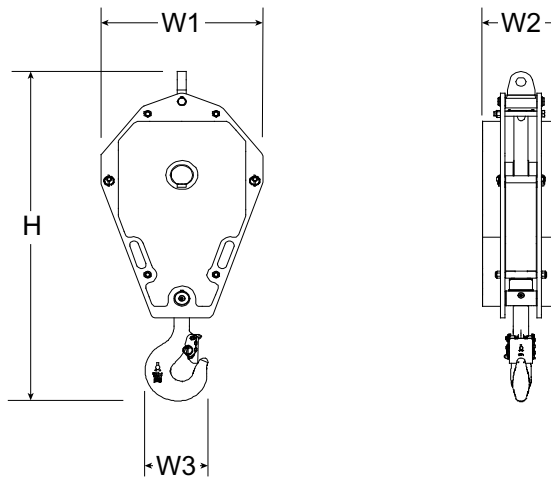
| | | |
|--------|----------|-----------|
| Width | 15.75 in | (0.40m) |
| Height | 33.78 in | (0.86m) |
| Weight | 996.0 lb | (451.8kg) |



Hook Blocks

15 Ton (13.6mt) Swivel Hook Block* ①

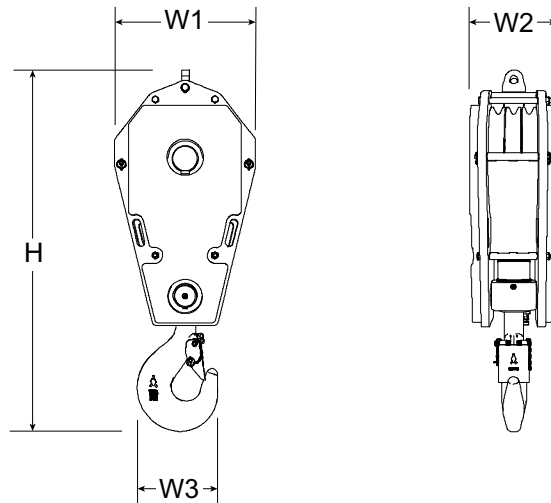
| | | |
|---------|----------|---------|
| Width 1 | 27.94 in | (0.71m) |
| Width 2 | 13.38 in | (0.34m) |
| Width 3 | 10.65 in | (0.27m) |
| Height | 63.06 in | (1.60m) |
| Weight | 1,700 lb | (771kg) |



90 Ton (81.65mt)

3-Sheave Hook Block* ①

| | | |
|---------|----------|-----------|
| Width 1 | 27.94 in | (0.71m) |
| Width 2 | 15.81 in | (0.40m) |
| Width 3 | 17.08 in | (0.43m) |
| Height | 75.88 in | (1.93m) |
| Weight | 2,400 lb | (1 088kg) |



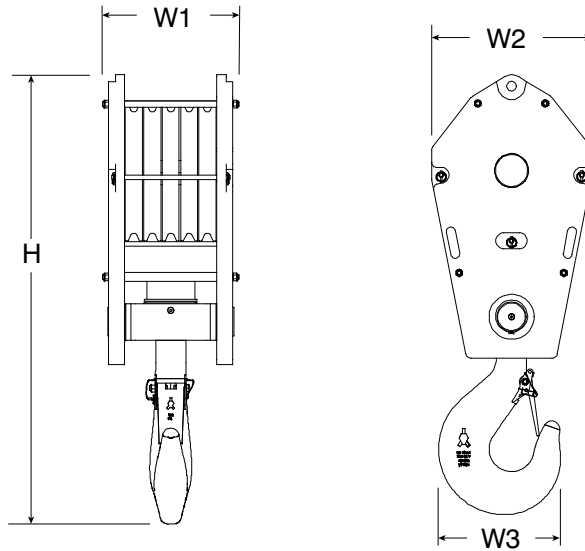
Number inside black circle "①" = # of components

* – Optional equipment

150 Ton (136.1mt)

5-Sheave Hook Block* ①

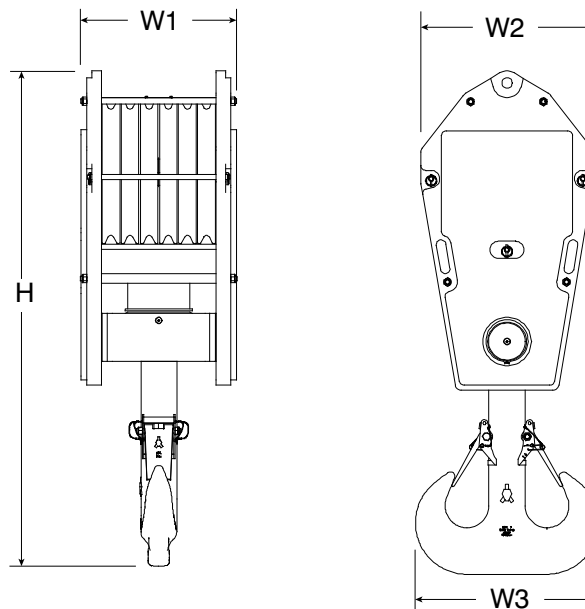
| | | |
|---------|------------|-----------|
| Width 1 | 21.34 in | (0.54m) |
| Width 2 | 29.95 in | (0.71m) |
| Width 3 | 21.34 in | (0.54m) |
| Height | 76.97 in | (1.95m) |
| Weight | 3,300.0 lb | (1 497kg) |



200 Ton (181.4mt)

6-Sheave Hook Block* ①

| | | |
|---------|------------|-----------|
| Width 1 | 23.70 in | (0.60m) |
| Width 2 | 27.95 in | (0.71m) |
| Width 3 | 34.75 in | (0.88m) |
| Height | 81.65 in | (2.07m) |
| Weight | 4,208.6 lb | (1 909kg) |



Number inside black circle "①" = # of components

* – Optional equipment

Working Weights

| | | |
|---|--------------------|-------|
| Based on basic crane including Cummins QSB6.7 Stage V diesel engine, independent hydraulic powered drums, boom hoist limiting device, independent hydraulic swing and travel, ABCDE + A counterweight, and crawler lower with 44 in (1.12m) wide track shoes, sealed track rollers, plus the following: | CTWT "ABCDE" + "A" | |
| | lb (kg) | |
| Lifting crane – includes 55 ft (16.76m) basic tubular boom, 27 ft (8.23m) live mast, 850 ft (259.08m) of 7/8 in (22mm) diameter boom hoist rope 1,185 ft (361.19m) of 26mm diameter wire rope for front and rear drum, 200 Ton (181.44mt) hook block, backstops, and basic bar pendants. | 359,286 (162 969) | |
| Ground Bearing Pressure | psi | 14.09 |
| | kg/cm ² | 0.99 |

Transport Weights

Base Crane: Rigid boom backstops, 59 gal (225L) of fuel, catwalks (both sides), 27 ft (8.23m) live mast, bail, boom hoist rope, 25 ft (7.62m) boom base section, and front and rear drums with 1,185 ft (361.19m) of type "KC" hoist rope.

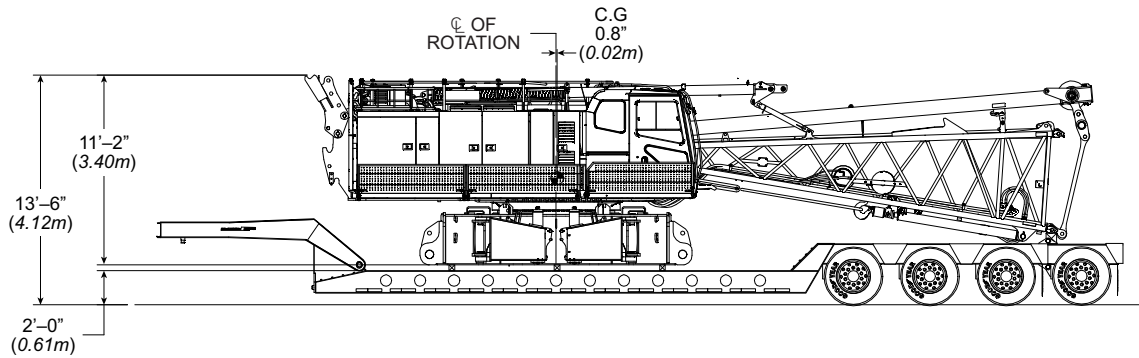
| Item Description | Gross Weight | | Transport Loads | | | | | | | | | |
|--|--------------|--------|-----------------|--------|--------|--------|--------|--------|--------|--------|--------|--------|
| | lb | (kg) | #1 | #2 | #3 | #4 | #5 | #6 | #7 | #8 | #9 | #10 |
| Base Crane | 90,632 | 41 111 | 1 | | | | | | | | | |
| Add Side Frame – Two Required 44" | 41,683 | 18 907 | | 1 | 1 | | | | | | | |
| Add "A" Base Counterweight | 24,700 | 11 204 | | | | | | 1 | | | | |
| Add "B" Wing Counterweight – Right Side | 14,200 | 6 441 | | | | | | | | 1 | | |
| Add "B" Wing Counterweight – Left Side | 15,000 | 6 804 | | | | | | | 1 | | | |
| Add "C" Wing Counterweight – Right Side | 14,200 | 6 441 | | | | 1 | | | | | | |
| Add "C" Wing Counterweight – Left Side | 15,000 | 6 804 | | | | 1 | | | | | | |
| Add "D" Wing Counterweight – Right Side | 14,200 | 6 441 | | | | | | | | 1 | | |
| Add "D" Wing Counterweight – Left Side | 15,000 | 6 804 | | | | | | | 1 | | | |
| Add "E" Wing Counterweight – Right Side | 14,200 | 6 441 | | | | | | | | | 1 | |
| Add "E" Wing Counterweight – Left Side | 15,000 | 6 804 | | | | | 1 | | | | | |
| Add "A" Lower Counterweight – Two Required | 17,600 | 7 983 | | | | | 1 | | | | 1 | |
| 20FT Combo Top Peak With Nylon Sheaves | 5,842 | 2 650 | | | | | | | | 1 | | |
| 10FT JN3-WALL 3RD DRUM BM EXT | 8,730 | 3 960 | | | | | | | | | | 1 |
| Third Drum Rope | 1,873 | 850 | | | | | | | | | | 1 |
| 20FT JE3-WALL BM EXT | 3,030 | 1 374 | | | | | | | 1 | | | |
| 30FT JE3-WALL BM EXT | 4,243 | 1 925 | | | | | | | 1 | | | |
| 40FT JE3-WALL BM EXT | 5,763 | 2 614 | | | | 1 | 1 | | | | | |
| 20FT FE-WALL BM EXT | 2,147 | 974 | | | | | | | | 1 | | |
| 30FT FE-WALL BM EXT | 2,897 | 1 314 | | | | | | 1 | | | | |
| 40FT FE-WALL BM EXT | 3,860 | 1 751 | | | | | | | | | 1 | |
| 15FT JIB BASE & STRUT | 1,234 | 560 | | | | | | | | | | 1 |
| 15FT JIB PEAK | 631 | 286 | | | | | | | | | | 1 |
| JIB BACKSTAY ASSY | 270 | 123 | | | | | | | | | | 1 |
| JIB FRONTSTAY ASSY | 238 | 108 | | | | | | | | | | 1 |
| 10' JIB EXT | 226 | 103 | | | | | | | 1 | | | |
| 20' JIB EXT | 396 | 180 | | | | 2 | | 1 | | | | |
| 60K HD TIP EXT W/ Nylon Sheaves | 962 | 436 | | | | | | | | | | |
| Add 15 Ton (13.6mt) Hook Ball | 996 | 452 | | | | | | | 1 | | | |
| Add 150 Ton (136mt) Six sheave Hook Block | 3,300 | 1 497 | | | | | | | | 1 | | |
| Approximate Total Shipping Weight | lb | | 90,632 | 41,683 | 41,683 | 35,755 | 38,364 | 27,993 | 38,495 | 39,689 | 35,660 | 12,976 |
| | kg | | 41 111 | 18 903 | 18 903 | 16 215 | 17 402 | 12 695 | 17 458 | 18 002 | 16 175 | 5 886 |

Notes:

Estimated weights vary by +/- 2%. Numbers in the load columns (numbers 1 – 10) represent quantities.

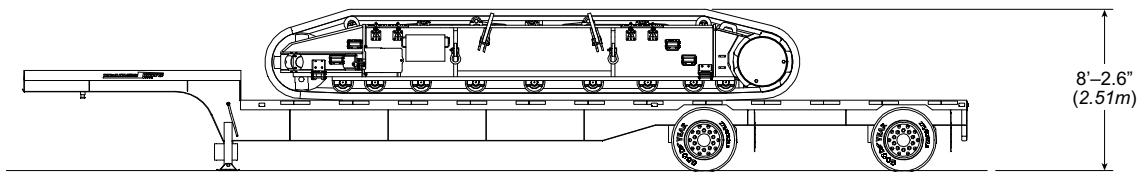
Estimated transport loads assume the load out consist of 275 ft (83.8m) of boom and 100 ft (30.48m) of jib and ABCDE + A counterweight. Overflow loads were targeted at 45,000 lb (20 412kg), 8.5ft(2.59m) wide, and 48 ft (14.63m) long trailer. This may vary depending on state laws, empty truck/trailer weights, and style of trailer.

Transport Drawings



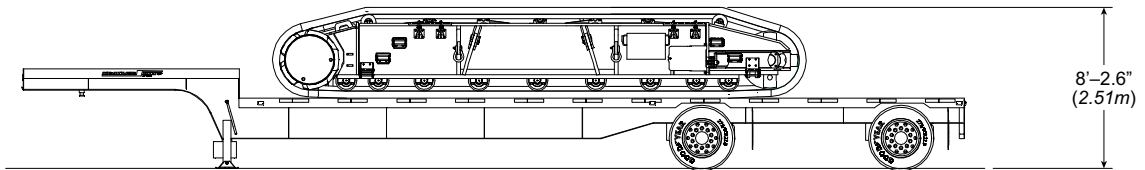
Load #1 Total 90,632 (41 111kg)

Base Crane



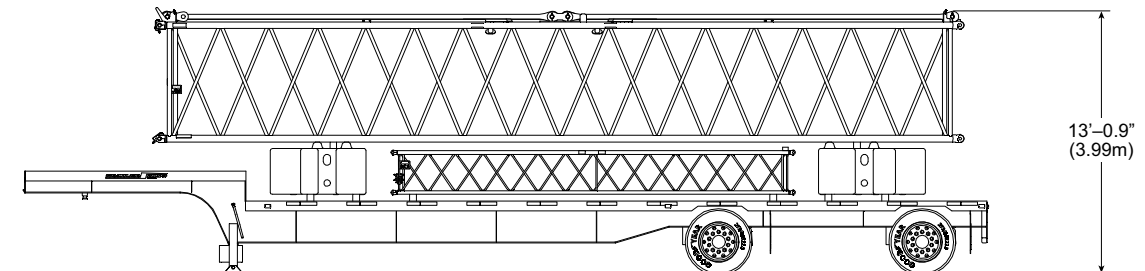
Load #2 Total 41,683 (18 907kg)

Side frame with 44 in (1.12m) track shoes



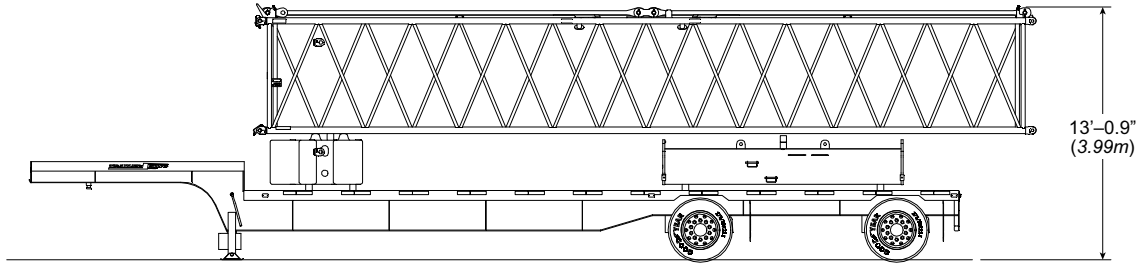
Load #3 Total 41,683 (18 907kg)

Side frame with 44 in (1.12m) track shoes



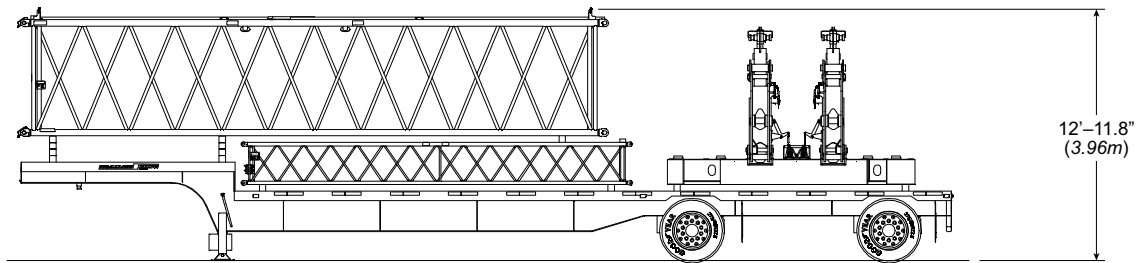
Load #4 Total 35,755 (16 215kg)

“C” Wing Counterweight – Left, “C” Wing Counterweight – Right,
2 – 20ft (6.10m) jib extensions, and 40 ft (12.19m) JE3 boom extension



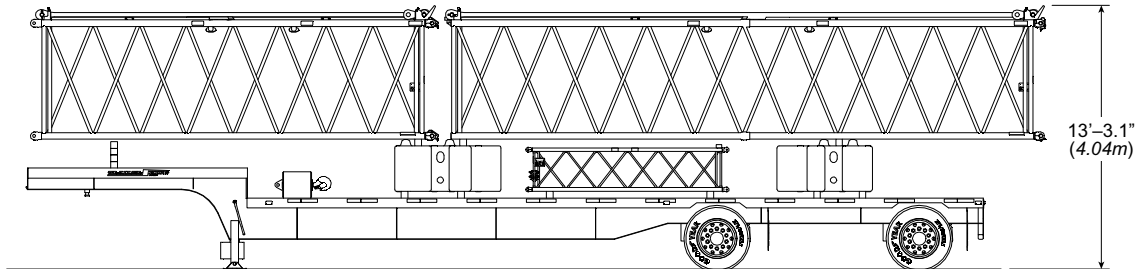
Load #5 Total 38,364 (17 402kg)

1 - "A" lower counterweight, "E" Wing Counterweight – Left Side,
40 ft (12.19m) JE3 boom extension



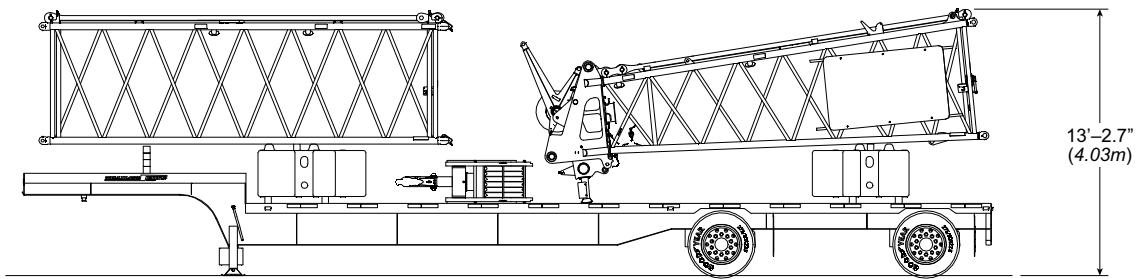
Load #6 Total 27,993 (12 695kg)

Base counterweight and cylinders, 20 (6.10m) ft Jib extension,
and 30 ft (9.14m) FE boom extension



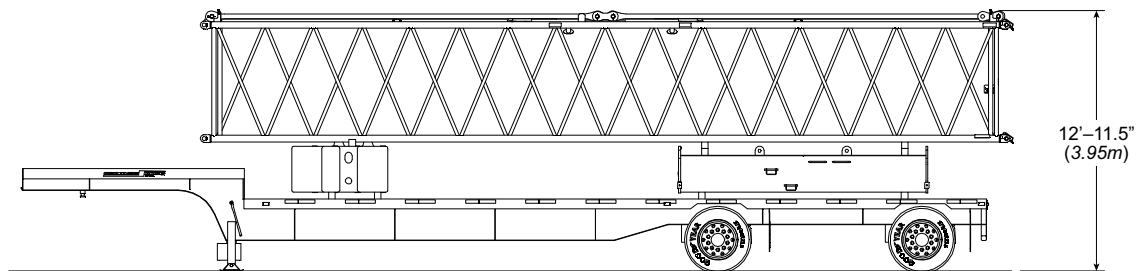
Load #7 Total 38,495 (17 458kg)

"B" Wing Counterweight – Left, "D" Wing Counterweight – Left, 15 ton hook ball,
10 (3.06m) ft Jib extension, 20 ft (6.10m) JN3 boom extension, and
30 ft (9.14m) JE3 boom extension



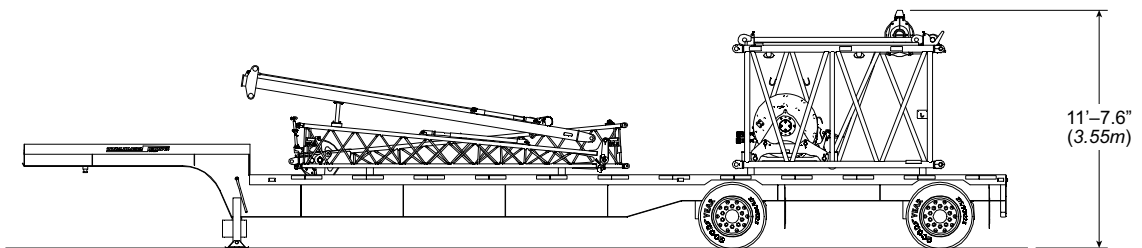
Load #8 Total 39,689 (18 002kg)

"B" Wing Counterweights, "D" Wing Counterweight – Right, 20 ft (6.10m) FE boom extension, 20 ft (6.10m) Combo Top Peak Section, and 200 Ton (158.4mt) Six sheave Hook Block



Load #9 Total 35,660 (16 175kg)

40 ft (12.19m) FE boom extension, one "E" Wing Counterweight – right Side, and one – "A" lower counterweight



Load #10 Total 12,976 (5 886kg)

10 ft (3.05m) JE3 extension with 3rd Drum and wire rope, 15 ft (4.57m) jib base section, jib backstay assemblies, and jib backstay and frontstay assemblies

Load Hoist Performance

Front And Rear Drum – 1.02 in (26mm) Wire Rope

| Rope Layer | Maximum Line Pull | | No Load Line Speed | | Full Load Line Speed | | Pitch Diameter | | Layer | | Total | |
|------------|-------------------|--------|--------------------|-------|----------------------|-------|----------------|-----|-------|------|-------|-------|
| | lb | kg | ft/min | m/min | ft/min | m/min | in | mm | ft | m | ft | m |
| 1 | 46,925 | 21 285 | 368 | 112.3 | 135 | 41 | 22.8 | 580 | 137.5 | 41.9 | 137.5 | 41.9 |
| 2 | 43,599 | 19 776 | 401 | 122.3 | 138 | 42 | 24.9 | 632 | 148.0 | 45.1 | 285.4 | 87.0 |
| 3 | 40,711 | 18 466 | 434 | 132.4 | 138 | 42 | 26.9 | 684 | 158.5 | 48.3 | 443.9 | 135.3 |
| 4 | 38,184 | 17 320 | 468 | 142.5 | 135 | 41 | 29.0 | 736 | 169.0 | 51.5 | 612.9 | 186.8 |
| 5 | 35,951 | 16 307 | 500 | 152.5 | 108 | 33 | 31.0 | 788 | 179.5 | 54.7 | 792.3 | 241.5 |
| 6 | 33,964 | 15 406 | 533 | 162.6 | 59 | 18 | 33.1 | 840 | 190.0 | 57.9 | 982.3 | 299.4 |
| 7 | Storage | | | | | | | | | | | |

Boom Hoist Drum -7/8 in (22mm) Wire Rope

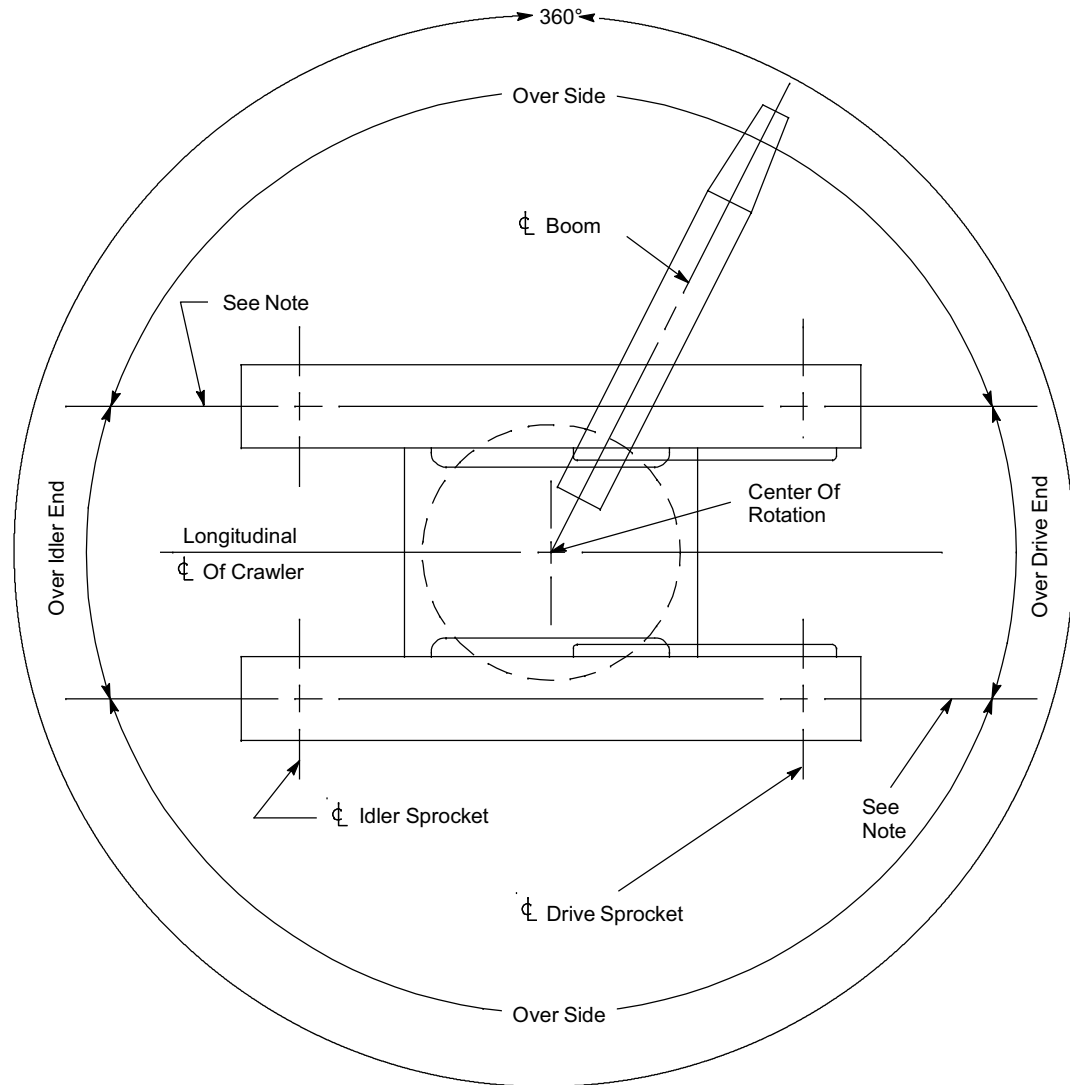
| Rope Layer | Maximum Line Pull | | No Load Line Speed | | Full Load Line Speed | | Pitch Diameter | | Layer | | Total | |
|------------|-------------------|--------|--------------------|-------|----------------------|-------|----------------|-------|-------|------|-------|-------|
| | lb | kg | ft/min | m/min | ft/min | m/min | in | mm | ft | m | ft | m |
| 1 | 51,147 | 23 200 | 100.2 | 30.5 | 144.3 | 44.0 | 21.8 | 553.0 | 79.7 | 24.3 | 79.7 | 24.3 |
| 2 | 47,840 | 21 700 | 107.1 | 32.6 | 154.2 | 47.0 | 23.3 | 591.1 | 85.3 | 26.0 | 165.0 | 50.3 |
| 3 | 44,974 | 20 400 | 114.0 | 34.7 | 164.2 | 50.0 | 24.8 | 629.3 | 90.9 | 27.7 | 255.9 | 78.0 |
| 4 | 42,329 | 19 200 | 120.9 | 36.8 | 174.1 | 53.1 | 26.3 | 667.4 | 96.5 | 29.4 | 352.4 | 107.4 |
| 5 | 40,124 | 18 200 | 127.8 | 38.9 | 184.1 | 56.1 | 27.8 | 705.5 | 101.7 | 31.0 | 454.1 | 138.4 |
| 6 | 37,920 | 17 200 | 134.7 | 41.1 | 194.0 | 59.1 | 29.3 | 743.6 | 107.3 | 32.7 | 561.4 | 171.1 |
| 7 | 36,156 | 16 400 | 141.6 | 43.2 | 204.0 | 62.2 | 30.8 | 781.8 | 112.9 | 34.4 | 674.2 | 205.5 |
| 8 | storage | | | | | | | | | | | |

Third Drum – 1.02 in (26mm) Wire Rope

| Rope Layer | Maximum Line Pull | | No Load Line Speed | | Full Load Line Speed | | Pitch Diameter | | Layer | | Total | |
|------------|-------------------|--------|--------------------|-------|----------------------|-------|----------------|-------|-------|------|-------|-------|
| | lb | kg | ft/min | m/min | ft/min | m/min | in | mm | ft | m | ft | m |
| 1 | 48,722 | 22 100 | 105.1 | 32.0 | 183.4 | 55.9 | 22.8 | 580.0 | 137.5 | 41.9 | 137.5 | 41.9 |
| 2 | 45,195 | 20 500 | 113.1 | 34.5 | 197.6 | 60.2 | 24.6 | 624.3 | 148.0 | 45.1 | 285.4 | 87.0 |
| 3 | 42,329 | 19 200 | 121.1 | 36.9 | 211.6 | 64.5 | 13.3 | 338.5 | 158.5 | 48.3 | 443.9 | 135.3 |
| 4 | 39,683 | 18 000 | 129.1 | 39.4 | 225.4 | 68.7 | 28.1 | 712.8 | 169.0 | 51.5 | 612.9 | 186.8 |
| 5 | 37,258 | 16 900 | 137.1 | 41.8 | 239.6 | 73.0 | 29.8 | 757.0 | 179.5 | 54.7 | 792.3 | 241.5 |
| 6 | 35,274 | 16 000 | 145.1 | 44.2 | 253.6 | 77.3 | 31.5 | 801.3 | 190.0 | 57.9 | 982.3 | 299.4 |

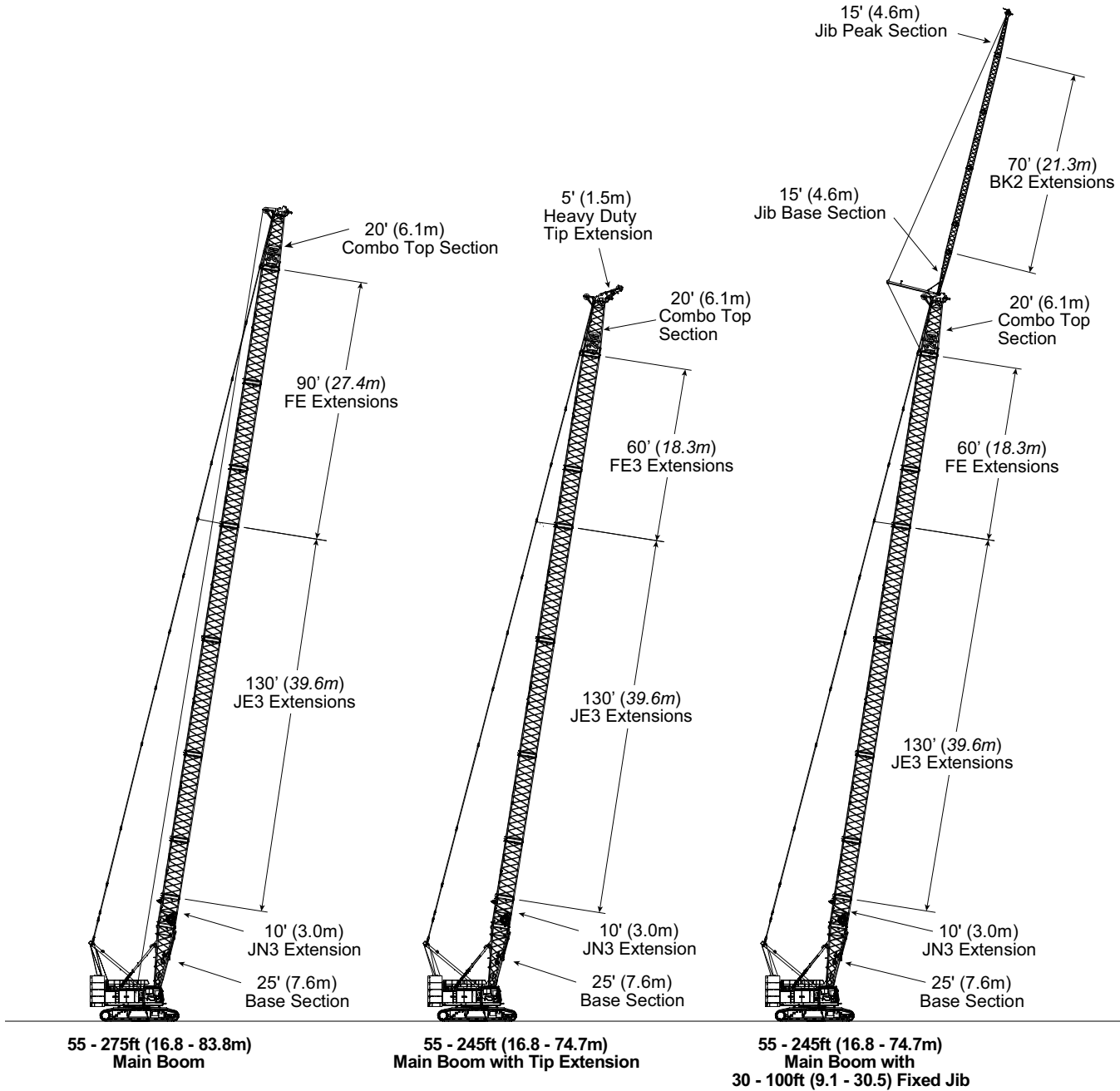
| Wire Rope Application | | Diameter | | Type | Max. Permissible Load | | Wire Rope Descriptions |
|-----------------------|----------|----------|------|------|-----------------------|--------|--|
| | | in | mm | | lb | kg | |
| Main Winch | Standard | 1.02 | 26 | KC | 29,900 | 13 562 | 37 X 7 rotation resistant – non-rotating, galvanized, right lang lay |
| Auxiliary Winch | Standard | 1.02 | 26 | KC | 29,900 | 13 562 | 37 X 7 rotation resistant – non-rotating, galvanized, right lang lay |
| Boom Hoist Winch | Standard | 7/8 | 22.4 | FC | 28,900 | 13 108 | 6 Strand, Compacted Strand, Swaged, Preformed, I.W.R.C., Right Regular Lay |
| Third Drum | Optional | 1.02 | 26 | KC | 29,900 | 13 562 | 37 X 7 rotation resistant – non-rotating, galvanized, right lang lay |

Working Areas



Note: These Lines Determine The Limiting Position Of Any Load For Operation Within Working Areas Indicated.

Attachments



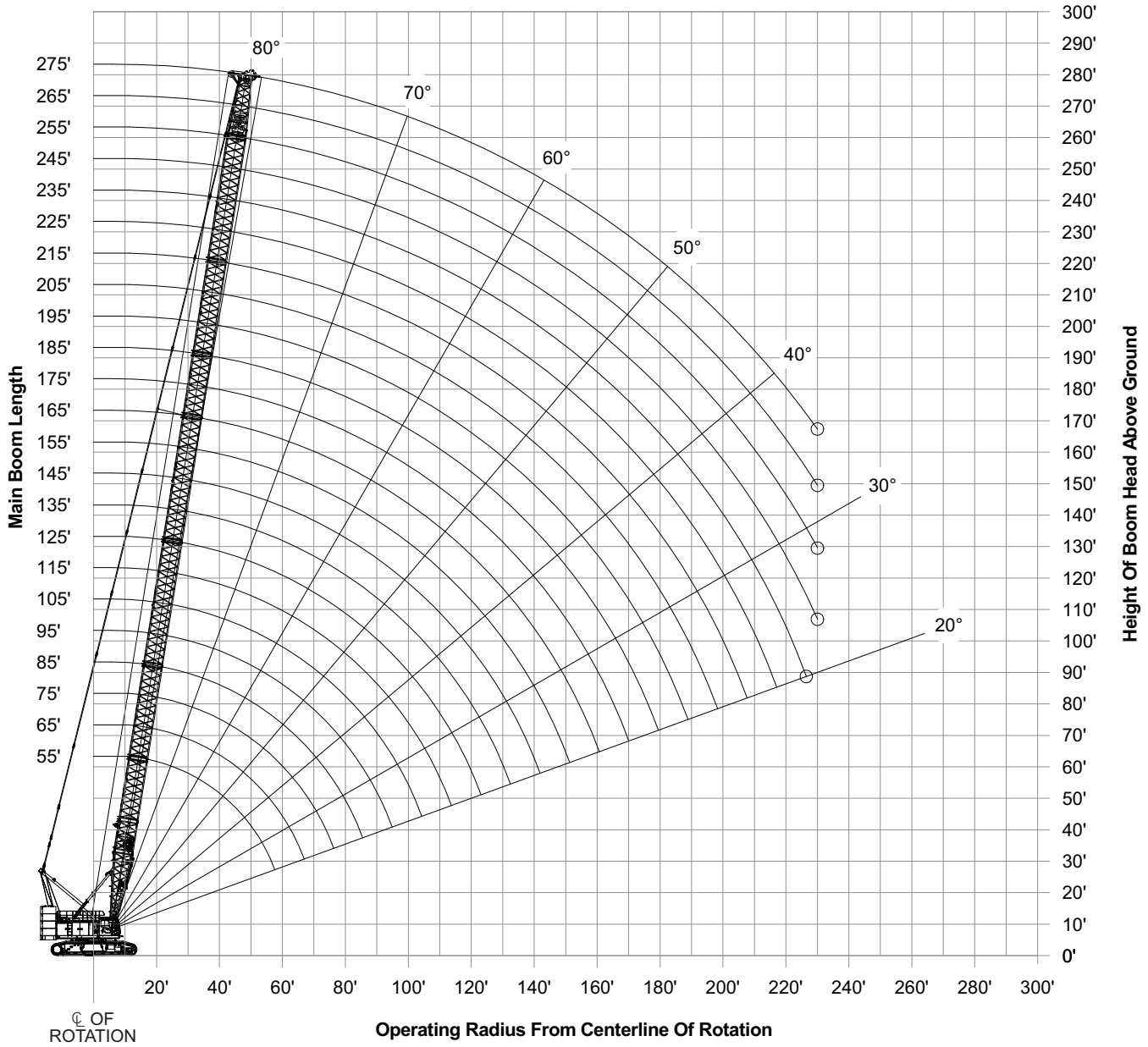
Main Boom Make- up

| Boom Length | | Base | "JN3" Heavy Wall Boom Extension | "JE3" Heavy Wall Boom Extensions | | | "FE" Light Wall Boom Extensions | | | | Top | |
|-------------|-------|-----------|--|-------------------------------------|------------------|-----------------|---------------------------------|------------------|------------------|-----------------|-----|-----------------|
| ft | m | | | 25 ft (7.62m) | 10 ft (3.05m) | 20ft (6.10m) | 30ft (9.14m) | 40ft (12.19m) | 10 ft (3.05m) | 20ft (6.10m) | | 30ft (9.14m) |
| 55 | 16.76 | 1 | 1 | | | | | | | | | 1 |
| 65 | 19.81 | Not Rated | | | | | | | | | | |
| 75 | 22.86 | 1 | 1 | 1 | | | | | | | | 1 |
| 85 | 25.91 | 1 | 1 | | 1 | | | | | | | 1 |
| 95 | 28.96 | 1 | 1 | | | 1 | | | | | | 1 |
| 105 | 32.00 | 1 | 1 | 1 | 1 | | | | | | | 1 |
| 115 | 35.05 | 1 | 1 | 1 | | 1 | | | | | | 1 |
| 125 | 38.10 | 1 | 1 | | 1 | 1 | | | | | | 1 |
| 135 | 41.15 | 1 | 1 | | | 2 | | | | | | 1 |
| 145 | 44.20 | 1 | 1 | 1 | 1 | 1 | | | | | | 1 |
| 155 | 47.24 | 1 | 1 | 1 | | 2 | | | | | | 1 |
| 165 | 50.29 | 1 | 1 | | 1 | 2 | | | | | | 1 |
| 175 | 53.34 | 1 | 1 | 2 | | 2 | | | | | | 1 |
| 185 | 56.39 | 1 | 1 | 1 | 1 | 2 | | | | | | 1 |
| 195 | 59.44 | 1 | 1 | 1 | 1 | 2 | 1 | | | | | 1 |
| 205 | 62.48 | 1 | 1 | 1 | 1 | 2 | | 1 | | | | 1 |
| 215 | 65.53 | 1 | 1 | 1 | 1 | 2 | | | 1 | | | 1 |
| 225 | 68.58 | 1 | 1 | 1 | 1 | 2 | | | | 1 | | 1 |
| 235 | 71.63 | 1 | 1 | 1 | 1 | 2 | 1 | | | 1 | | 1 |
| 245 | 74.68 | 1 | 1 | 1 | 1 | 2 | | 1 | | 1 | | 1 |
| 255 | 77.72 | 1 | 1 | 1 | 1 | 2 | | | 1 | 1 | | 1 |
| 265 | 80.77 | 1 | 1 | 1 | 1 | 2 | 1 | | 1 | 1 | | 1 |
| 275 | 83.82 | 1 | 1 | 1 | 1 | 2 | | 1 | 1 | 1 | | 1 |

Notes:

- Capacities shown are in kips/metric tons (1 kip = 1,000 lb / 1 metric ton = 0.45 kips) and are not more than 75% of the tipping loads with the crane standing level on firm supporting surface. A deduction must be made from these capacities for weight of hook block, hook ball, sling, grapple, load weighing device, etc. When using main hook while jib or tip extension is attached, reduce capacities by values shown in Crane Rating Manual. See Operator's Manual for all limitations when raising or lowering attachment.
- For recommended reeving, parts of line, wire rope type, and wire rope inspection, see Wire Rope Capacity Chart, and Operator's Manual,
- Load ratings are based on freely suspended loads and make no allowances for such factors as the effect of the wind, ground conditions, and operating speeds. The operator shall therefore reduce load ratings in order to take these conditions into account. Refer to the Crane Rating Manual for Wind Speed Restrictions.
- The 27 ft (8.23m) live mast must be used for all capacities listed.
- The least stable rated condition is over the side.
- Booms must be erected and lowered over the end for maximum stability.
- Main boom length must not exceed 275 ft (83.82m).
- Do not operate at radii and boom lengths where the Crane Rating Manual lists no capacity. Do not use longer booms or jibs than those listed in the Crane Rating Manual. Any of the above can cause a tipping condition, or boom and jib failure.
- These capacities are in compliance with ASME/ANSI B30.5 at date of manufacture.
- These capacities apply only to the crane as originally manufactured and normally equipped by Link-Belt Construction Equipment Company.
- The first 140' (42.67m) of boom must be "JN3" / "JE3" heavy wall sections.
- Optional midpoint pendant connections are required for boom lengths of 255 ft (77.72m) and longer and always connected at 135 ft (41.9m) from the boom foot.

Main Boom Working Range Diagram



Notes:

1. Boom geometry shown is for unloaded condition and crane standing level on firm supporting surface. Boom deflection, subsequent radius, and boom angle change must be accounted for when applying load to hook.
2. Maximum and minimum boom angles are equal to the values listed in the capacity charts for each boom length.

Main Boom Load Charts – Imperial

| Main Boom – 360° Rotation | | | | | | | | | | | | | |
|---|------------------|-------|-------|-------|-------|-------|-------|-------|-------|-------|-------|-------|----------------|
| ABCDE + A [141,500 + 35,200 lb] Counterweight | | | | | | | | | | | | | |
| [All capacities listed are in kips] | | | | | | | | | | | | | |
| Load Radius ft | Boom Length – ft | | | | | | | | | | | | Load Radius ft |
| | 55 | 65 | 75 | 85 | 95 | 105 | 115 | 125 | 135 | 145 | 155 | 165 | |
| 12.1 | 400.0* | | | | | | | | | | | | 12.1 |
| 15 | 335.7* | | | | | | | | | | | | 15 |
| 16 | 297.6 | | | | | | | | | | | | 16 |
| 17 | 297.6 | | | | | | | | | | | | 17 |
| 18 | 281.6 | 280.7 | | | | | | | | | | | 18 |
| 19 | 267.6 | 266.8 | 265.8 | | | | | | | | | | 19 |
| 20 | 254.7 | 254.0 | 253.1 | | | | | | | | | | 20 |
| 25 | 205.2 | 204.7 | 204.0 | 203.3 | 202.5 | 201.6 | 200.7 | | | | | | 25 |
| 30 | 171.2 | 170.8 | 170.3 | 169.7 | 169.1 | 168.4 | 167.7 | 166.9 | 166.1 | 165.3 | | | 30 |
| 35 | 146.5 | 146.2 | 145.8 | 145.3 | 144.8 | 144.2 | 143.5 | 142.9 | 142.2 | 141.5 | 140.8 | 140.0 | 35 |
| 40 | 127.6 | 127.4 | 127.1 | 126.6 | 126.1 | 125.5 | 125.0 | 124.3 | 123.7 | 123.1 | 122.4 | 121.7 | 40 |
| 50 | 94.0 | 94.2 | 94.2 | 94.0 | 93.8 | 93.6 | 93.3 | 93.0 | 92.6 | 92.3 | 92.0 | 91.6 | 50 |
| 60 | | 73.6 | 73.7 | 73.5 | 73.3 | 73.1 | 72.8 | 72.5 | 72.1 | 71.8 | 71.4 | 71.1 | 60 |
| 70 | | | 59.8 | 59.7 | 59.5 | 59.2 | 59.2 | 58.9 | 58.5 | 58.2 | 57.8 | 57.5 | 70 |
| 80 | | | | 49.9 | 49.8 | 49.5 | 49.2 | 48.9 | 48.6 | 48.2 | 47.9 | 47.5 | 80 |
| 90 | | | | | 42.3 | 42.1 | 41.8 | 41.5 | 41.1 | 40.8 | 40.4 | 40.0 | 90 |
| 100 | | | | | | 36.2 | 36.0 | 35.6 | 35.3 | 34.9 | 34.6 | 34.2 | 100 |
| 110 | | | | | | | 31.3 | 31.0 | 30.6 | 30.3 | 29.9 | 29.5 | 110 |
| 120 | | | | | | | | 27.3 | 27.0 | 26.7 | 26.3 | 25.9 | 120 |
| 130 | | | | | | | | | 23.8 | 23.5 | 23.1 | 22.7 | 130 |
| 140 | | | | | | | | | | 20.7 | 20.4 | 20.0 | 140 |
| 150 | | | | | | | | | | | 18.0 | 17.7 | 150 |
| 160 | | | | | | | | | | | | 15.7 | 160 |

*Over the end; special equipment required.

This material is supplied for reference use only. Operator must refer to in-cab Crane Rating Manual and Operator's Manual to determine allowable crane lifting capacities and assembly and operating procedures.

| Main Boom – 360° Rotation | | | | | | | | | | | | |
|--|-------------------------|------------|------------|------------|------------|------------|------------|------------|------------|------------|------------|-----------------------|
| ABCDE + A [141,500 + 35,200 lb] Counterweight | | | | | | | | | | | | |
| [All capacities listed are in kips] | | | | | | | | | | | | |
| Load Radius ft | Boom Length – ft | | | | | | | | | | | Load Radius ft |
| | 175 | 185 | 195 | 205 | 215 | 225 | 235 | 245 | 255 | 265 | 275 | |
| 35 | 139.3 | | | | | | | | | | | 35 |
| 40 | 121.0 | 120.3 | 119.8 | 113.4 | | | | | | | | 40 |
| 50 | 91.2 | 90.8 | 90.6 | 90.3 | 89.5 | 83.2 | 80.1 | 77.2 | 70.2 | 63.3 | 56.2 | 50 |
| 60 | 70.7 | 70.3 | 70.1 | 69.8 | 69.5 | 69.2 | 68.4 | 66.1 | 63.7 | 58.5 | 51.9 | 60 |
| 70 | 57.1 | 56.7 | 56.5 | 56.2 | 55.9 | 55.6 | 55.3 | 54.2 | 52.6 | 51.0 | 47.2 | 70 |
| 80 | 47.1 | 46.7 | 46.4 | 46.2 | 45.8 | 45.5 | 45.2 | 44.9 | 44.6 | 44.1 | 42.7 | 80 |
| 90 | 39.6 | 39.2 | 38.9 | 38.6 | 38.3 | 38.0 | 37.7 | 37.4 | 37.0 | 36.7 | 36.4 | 90 |
| 100 | 33.8 | 33.3 | 33.1 | 32.8 | 32.4 | 32.1 | 31.8 | 31.5 | 31.1 | 30.8 | 30.5 | 100 |
| 110 | 29.4 | 29.0 | 28.8 | 28.5 | 28.1 | 27.8 | 27.5 | 27.2 | 26.9 | 26.4 | 25.9 | 110 |
| 120 | 25.6 | 25.2 | 24.9 | 24.6 | 24.2 | 24.0 | 23.7 | 23.4 | 23.0 | 22.7 | 22.4 | 120 |
| 130 | 22.4 | 22.0 | 21.7 | 21.4 | 21.0 | 20.7 | 20.4 | 20.1 | 19.8 | 19.5 | 19.2 | 130 |
| 140 | 19.6 | 19.3 | 19.0 | 18.7 | 18.3 | 18.0 | 17.7 | 17.4 | 17.1 | 16.8 | 16.4 | 140 |
| 150 | 17.3 | 16.9 | 16.7 | 16.4 | 16.0 | 15.7 | 15.4 | 15.0 | 14.7 | 14.4 | 14.1 | 150 |
| 160 | 15.3 | 14.9 | 14.6 | 14.3 | 13.9 | 13.6 | 13.3 | 13.0 | 12.7 | 12.4 | 12.0 | 160 |
| 170 | | 13.1 | 12.9 | 12.4 | 12.2 | 11.8 | 11.4 | 11.2 | 10.9 | 10.6 | 10.3 | 170 |
| 180 | | | 11.3 | 10.5 | 10.5 | 10.0 | 9.6 | 9.3 | 9.1 | 9.0 | 8.7 | 180 |
| 190 | | | | 8.9 | 8.8 | 8.3 | 7.9 | 7.7 | 7.5 | 7.3 | 7.2 | 190 |
| 200 | | | | | 7.2 | 6.7 | 6.4 | 6.2 | 6.0 | 5.9 | 5.8 | 200 |
| 210 | | | | | | 5.3 | 5.0 | 4.7 | 4.6 | 4.6 | 4.5 | 210 |
| 220 | | | | | | | 3.6 | 3.5 | 3.4 | 3.3 | 3.3 | 220 |
| 230 | | | | | | | | 2.3 | 2.2 | 2.2 | 2.2 | 230 |

***Over the end; special equipment required.**

This material is supplied for reference use only. Operator must refer to in-cab Crane Rating Manual and Operator's Manual to determine allowable crane lifting capacities and assembly and operating procedures.

Main Boom Load Charts – Metric

| Main Boom – 360° Rotation | | | | | | | | | | | | | | |
|--|-----------------|-------|-------|------|------|------|------|------|------|------|------|------|---------------|------|
| ABCDE + A [64 183 + 15 966 kg] Counterweight | | | | | | | | | | | | | | |
| [All capacities listed are in kips (mt)] | | | | | | | | | | | | | | |
| Load Radius m | Boom Length – m | | | | | | | | | | | | Load Radius m | |
| | 16.8 | 19.8 | 22.9 | 25.9 | 29.0 | 32.0 | 35.1 | 38.1 | 41.1 | 44.2 | 47.2 | 50.3 | | |
| 3.7 | 181.4* | | | | | | | | | | | | | 3.7 |
| 4.6 | 152.3* | | | | | | | | | | | | | 4.6 |
| 4.9 | 135.0 | | | | | | | | | | | | | 4.9 |
| 5.2 | 135.0 | | | | | | | | | | | | | 5.2 |
| 5.5 | 127.7 | 127.3 | | | | | | | | | | | | 5.5 |
| 5.8 | 121.4 | 121.0 | 120.6 | | | | | | | | | | | 5.8 |
| 6.1 | 115.5 | 115.2 | 114.8 | | | | | | | | | | | 6.1 |
| 7.6 | 93.1 | 92.9 | 92.5 | 92.2 | 91.9 | 91.4 | 91.0 | | | | | | | 7.6 |
| 9.1 | 77.7 | 77.5 | 77.2 | 77.0 | 76.7 | 76.4 | 76.1 | 75.7 | 75.3 | 75.0 | | | | 9.1 |
| 10.7 | 66.5 | 66.3 | 66.1 | 65.9 | 65.7 | 65.4 | 65.1 | 64.8 | 64.5 | 64.2 | 63.9 | 63.5 | | 10.7 |
| 12.2 | 57.9 | 57.8 | 57.7 | 57.4 | 57.2 | 56.9 | 56.7 | 56.4 | 56.1 | 55.8 | 55.5 | 55.2 | | 12.2 |
| 15.2 | 42.6 | 42.7 | 42.7 | 42.6 | 42.5 | 42.5 | 42.3 | 42.2 | 42.0 | 41.9 | 41.7 | 41.5 | | 15.2 |
| 18.3 | | 33.4 | 33.4 | 33.3 | 33.2 | 33.2 | 33.0 | 32.9 | 32.7 | 32.6 | 32.4 | 32.3 | | 18.3 |
| 21.3 | | | 27.1 | 27.1 | 27.0 | 26.9 | 26.9 | 26.7 | 26.5 | 26.4 | 26.2 | 26.1 | | 21.3 |
| 24.4 | | | | 22.6 | 22.6 | 22.5 | 22.3 | 22.2 | 22.0 | 21.9 | 21.7 | 21.5 | | 24.4 |
| 27.4 | | | | | 19.2 | 19.1 | 19.0 | 18.8 | 18.6 | 18.5 | 18.3 | 18.1 | | 27.4 |
| 30.5 | | | | | | 16.4 | 16.3 | 16.1 | 16.0 | 15.8 | 15.7 | 15.5 | | 30.5 |
| 33.5 | | | | | | | 14.2 | 14.1 | 13.9 | 13.7 | 13.6 | 13.4 | | 33.5 |
| 36.6 | | | | | | | | 12.4 | 12.2 | 12.1 | 11.9 | 11.7 | | 36.6 |
| 39.6 | | | | | | | | | 10.8 | 10.7 | 10.5 | 10.3 | | 39.6 |
| 42.7 | | | | | | | | | | 9.4 | 9.3 | 9.1 | | 42.7 |
| 45.7 | | | | | | | | | | | 8.2 | 8.0 | | 45.7 |
| 48.8 | | | | | | | | | | | | 7.1 | | 48.8 |

*Over the end; special equipment required.

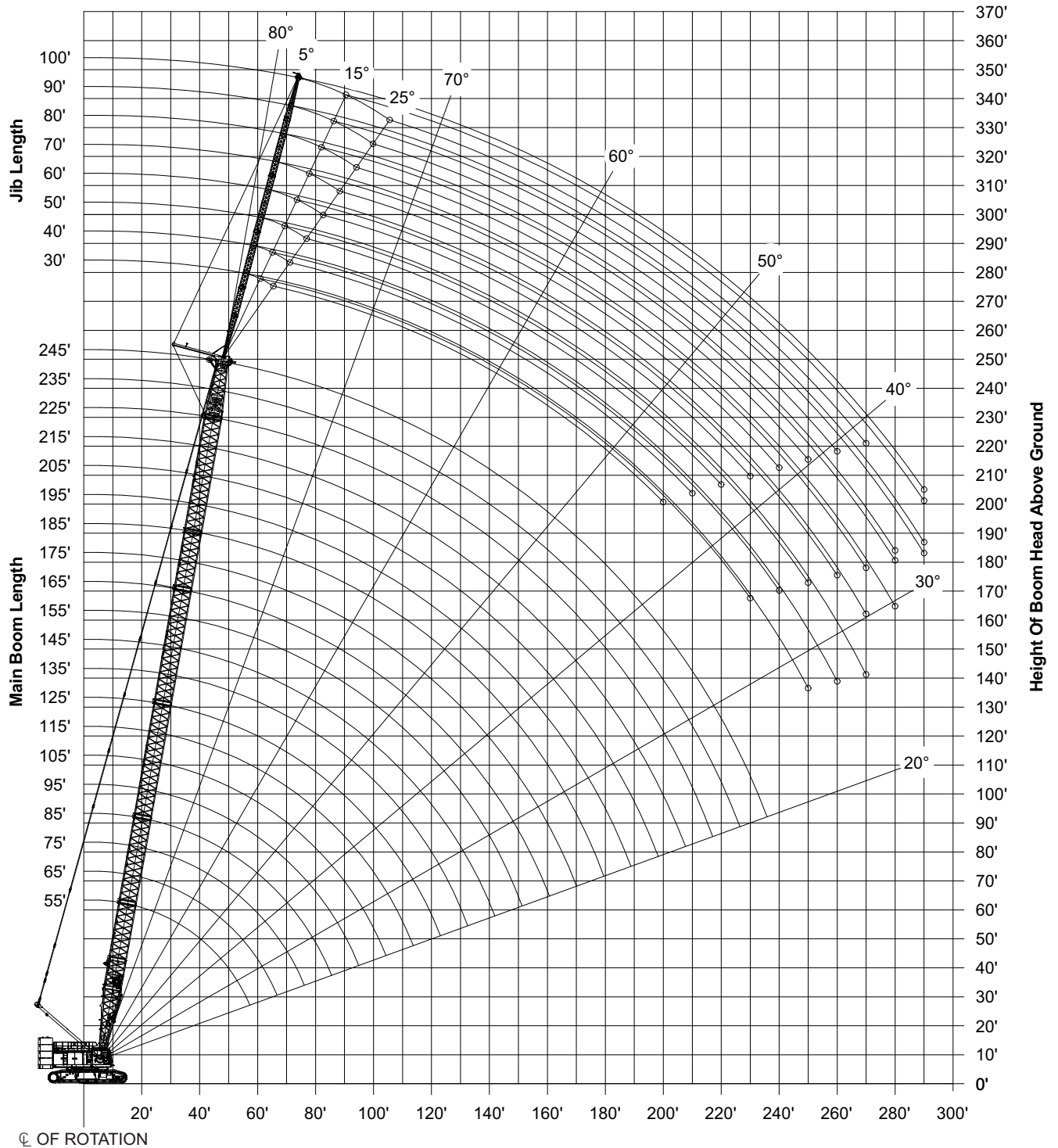
This material is supplied for reference use only. Operator must refer to in-cab Crane Rating Manual and Operator's Manual to determine allowable crane lifting capacities and assembly and operating procedures.

| Main Boom – 360° Rotation | | | | | | | | | | | | | |
|---|------------------------|-------------|-------------|-------------|-------------|-------------|-------------|-------------|-------------|-------------|-------------|-------------|----------------------|
| ABCDE + A [64 183 + 15 966 kg] Counterweight | | | | | | | | | | | | | |
| [All capacities listed are in kips (mt)] | | | | | | | | | | | | | |
| Load Radius m | Boom Length – m | | | | | | | | | | | | Load Radius m |
| | 53.3 | 56.4 | 59.4 | 62.5 | 65.5 | 68.6 | 71.6 | 74.7 | 77.7 | 80.8 | 83.8 | 86.9 | |
| 10.7 | 63.2 | | | | | | | | | | | | 10.7 |
| 12.2 | 54.9 | 54.6 | 54.3 | 51.4 | | | | | | | | | 12.2 |
| 15.2 | 41.4 | 41.2 | 41.1 | 41.0 | 40.6 | 37.7 | 36.3 | 35.0 | 31.8 | 28.7 | 25.5 | | 15.2 |
| 18.3 | 32.1 | 31.9 | 31.8 | 31.7 | 31.5 | 31.4 | 31.0 | 30.0 | 28.9 | 26.5 | 23.5 | 21.2 | 18.3 |
| 21.3 | 25.9 | 25.7 | 25.6 | 25.5 | 25.4 | 25.2 | 25.1 | 24.6 | 23.9 | 23.1 | 21.4 | 19.3 | 21.3 |
| 24.4 | 21.4 | 21.2 | 21.0 | 21.0 | 20.8 | 20.6 | 20.5 | 20.4 | 20.2 | 20.0 | 19.4 | 17.6 | 24.4 |
| 27.4 | 18.0 | 17.8 | 17.6 | 17.5 | 17.4 | 17.2 | 17.1 | 17.0 | 16.8 | 16.6 | 16.5 | 15.9 | 27.4 |
| 30.5 | 15.3 | 15.1 | 15.0 | 14.9 | 14.7 | 14.6 | 14.4 | 14.3 | 14.1 | 14.0 | 13.8 | 13.7 | 30.5 |
| 33.5 | 13.3 | 13.2 | 13.1 | 12.9 | 12.7 | 12.6 | 12.5 | 12.3 | 12.2 | 12.0 | 11.7 | 11.5 | 33.5 |
| 36.6 | 11.6 | 11.4 | 11.3 | 11.2 | 11.0 | 10.9 | 10.8 | 10.6 | 10.4 | 10.3 | 10.2 | 10.0 | 36.6 |
| 39.6 | 10.2 | 10.0 | 9.8 | 9.7 | 9.5 | 9.4 | 9.3 | 9.1 | 9.0 | 8.8 | 8.7 | 8.5 | 39.6 |
| 42.7 | 8.9 | 8.8 | 8.6 | 8.5 | 8.3 | 8.2 | 8.0 | 7.9 | 7.8 | 7.6 | 7.4 | 7.3 | 42.7 |
| 45.7 | 7.8 | 7.7 | 7.6 | 7.4 | 7.3 | 7.1 | 7.0 | 6.8 | 6.7 | 6.5 | 6.4 | 6.2 | 45.7 |
| 48.8 | 6.9 | 6.8 | 6.6 | 6.5 | 6.3 | 6.2 | 6.0 | 5.9 | 5.8 | 5.6 | 5.4 | 5.3 | 48.8 |
| 51.8 | | 5.9 | 5.9 | 5.6 | 5.5 | 5.4 | 5.2 | 5.1 | 4.9 | 4.8 | 4.7 | 4.5 | 51.8 |
| 54.9 | | | 5.1 | 4.8 | 4.8 | 4.5 | 4.4 | 4.2 | 4.1 | 4.1 | 3.9 | 3.8 | 54.9 |
| 57.9 | | | | 4.0 | 4.0 | 3.8 | 3.6 | 3.5 | 3.4 | 3.3 | 3.3 | 3.1 | 57.9 |
| 61.0 | | | | | 3.3 | 3.0 | 2.9 | 2.8 | 2.7 | 2.7 | 2.6 | 2.6 | 61.0 |
| 64.0 | | | | | | 2.4 | 2.3 | 2.1 | 2.1 | 2.1 | 2.0 | 2.0 | 64.0 |
| 67.1 | | | | | | | 1.6 | 1.6 | 1.5 | 1.5 | 1.5 | 1.5 | 67.1 |
| 70.1 | | | | | | | | 1.0 | 1.0 | 1.0 | 1.0 | 1.0 | 70.1 |

***Over the end; special equipment required.**

This material is supplied for reference use only. Operator must refer to in-cab Crane Rating Manual and Operator's Manual to determine allowable crane lifting capacities and assembly and operating procedures.

Jib Attachment Working Range Diagram



Notes:

Operating Radius From Centerline Of Rotation

1. Boom geometry shown is for unloaded condition and crane standing level on firm supporting surface. Boom deflection, subsequent radius, and boom angle change must be accounted for when applying load to hook.
2. Maximum and minimum boom angles are equal to the values listed in the capacity charts for each boom length.

Jib Attachment Load Charts – Imperial

| Main Boom + 30 ft Offset Tube Jib – 360° | | | | | | | | | | | | | | | | | |
|---|-----------------------|------|------|------|------|----------------|-----------------------|------|------|------|------------|----------------|-----------------------|------|------|------|------|
| ABCDE + A [141,500 + 35,200 lb] Counterweight | | | | | | | | | | | | | | | | | |
| [All capacities listed are in kips] | | | | | | | | | | | | | | | | | |
| 5° Offset | | | | | | 15° Offset | | | | | 25° Offset | | | | | | |
| Load Radius ft | Main Boom Length – ft | | | | | Load Radius ft | Main Boom Length – ft | | | | | Load Radius ft | Main Boom Length – ft | | | | |
| | 55 | 95 | 145 | 195 | 245 | | 55 | 95 | 145 | 195 | 245 | | 55 | 95 | 145 | 195 | 245 |
| 30 | 59.3 | 59.2 | | | | 30 | 57.7 | | | | 30 | | | | | | |
| 35 | 59.1 | 59.2 | | | | 35 | 56.3 | 57.4 | | | 35 | 45.2 | | | | | |
| 40 | 57.5 | 59.2 | 59.0 | | | 40 | 51.6 | 56.4 | | | 40 | 41.5 | 47.1 | | | | |
| 50 | 50.3 | 57.7 | 57.9 | 54.4 | | 50 | 42.7 | 53.9 | 54.6 | | 50 | 35.9 | 41.9 | 46.7 | | | |
| 60 | 41.4 | 55.7 | 56.4 | 53.2 | 36.7 | 60 | 36.6 | 47.0 | 53.4 | 50.5 | 60 | 31.9 | 37.9 | 42.8 | 46.3 | | |
| 70 | 35.2 | 50.3 | 54.1 | 52.1 | 35.5 | 70 | 32.2 | 41.7 | 51.2 | 49.6 | 34.0 | 70 | 29.7 | 34.6 | 39.7 | 43.3 | 31.8 |
| 80 | 30.8 | 43.9 | 44.7 | 42.7 | 34.3 | 80 | | 37.5 | 45.3 | 43.5 | 32.8 | 80 | | 32.1 | 37.1 | 40.8 | 30.6 |
| 90 | | 38.9 | 37.7 | 35.6 | 33.1 | 90 | | 34.3 | 38.2 | 36.3 | 31.6 | 90 | | 30.0 | 34.8 | 36.9 | 27.8 |
| 100 | | 34.3 | 32.3 | 30.1 | 28.4 | 100 | | 31.7 | 32.6 | 30.7 | 28.9 | 100 | | 29.7 | 32.9 | 31.2 | 26.9 |
| 110 | | 30.0 | 28.1 | 26.0 | 23.9 | 110 | | 29.6 | 28.4 | 26.5 | 24.6 | 110 | | | 28.7 | 27.0 | 25.2 |
| 120 | | | 24.6 | 22.4 | 20.3 | 120 | | | 24.7 | 22.8 | 20.9 | 120 | | | 25.0 | 23.2 | 21.4 |
| 130 | | | 21.6 | 19.4 | 17.3 | 130 | | | 21.7 | 19.7 | 17.8 | 130 | | | 21.9 | 20.1 | 18.2 |
| 140 | | | 19.0 | 16.9 | 14.7 | 140 | | | 19.1 | 17.1 | 15.2 | 140 | | | | 17.4 | 15.6 |
| 150 | | | 16.8 | 14.7 | 12.5 | 150 | | | 16.9 | 14.9 | 12.9 | 150 | | | | 15.2 | 13.3 |
| 160 | | | 14.9 | 12.8 | 10.6 | 160 | | | | 13.0 | 10.9 | 160 | | | | 13.2 | 11.3 |
| 170 | | | | 11.1 | 8.9 | 170 | | | | 11.3 | 9.2 | 170 | | | | 11.4 | 9.5 |
| 180 | | | | 9.7 | 7.4 | 180 | | | | 9.8 | 7.7 | 180 | | | | | 8.0 |
| 190 | | | | 8.4 | 6.1 | 190 | | | | 8.4 | 6.4 | 190 | | | | | 6.6 |
| 200 | | | | 7.2 | 4.9 | 200 | | | | | 5.2 | 200 | | | | | 5.4 |
| 210 | | | | 6.2 | 3.9 | 210 | | | | | 4.1 | 210 | | | | | |
| 220 | | | | | 2.9 | 220 | | | | | 3.1 | 220 | | | | | |

This material is supplied for reference use only. Operator must refer to in-cab Crane Rating Manual and Operator's Manual to determine allowable crane lifting capacities and assembly and operating procedures.

| Main Boom + 60 ft Offset Tube Jib – 360° | | | | | | | | | | | | | | | | | | |
|---|-----------------------|------|------|------|------|----------------|-----------------------|------|------|------|------|----------------|-----------------------|------|------|------|------|--|
| ABCDE + A [141,500 + 35,200 lb] Counterweight | | | | | | | | | | | | | | | | | | |
| [All capacities listed are in kips] | | | | | | | | | | | | | | | | | | |
| 5° Offset | | | | | | 15° Offset | | | | | | 25° Offset | | | | | | |
| Load Radius ft | Main Boom Length – ft | | | | | Load Radius ft | Main Boom Length – ft | | | | | Load Radius ft | Main Boom Length – ft | | | | | |
| | 55 | 95 | 145 | 195 | 245 | | 55 | 95 | 145 | 195 | 245 | | 55 | 95 | 145 | 195 | 245 | |
| 30 | 34.8 | | | | | 30 | | | | | | 30 | | | | | | |
| 35 | 33.7 | | | | | 35 | | | | | | 35 | | | | | | |
| 40 | 32.7 | 33.5 | | | | 40 | 28.8 | | | | | 40 | | | | | | |
| 50 | 28.7 | 32.1 | 32.0 | | | 50 | 27.4 | 28.0 | | | | 50 | 23.4 | | | | | |
| 60 | 27.3 | 28.7 | 29.1 | 28.1 | | 60 | 25.9 | 27.1 | 27.2 | | | 60 | 20.4 | 22.7 | | | | |
| 70 | 25.4 | 27.7 | 28.3 | 27.5 | 25.4 | 70 | 22.4 | 26.2 | 26.5 | 25.8 | | 70 | 18.1 | 20.5 | 22.6 | | | |
| 80 | 21.9 | 26.7 | 27.5 | 26.9 | 24.8 | 80 | 19.8 | 24.3 | 25.9 | 25.3 | 23.0 | 80 | 16.3 | 18.8 | 21.0 | 22.5 | | |
| 90 | 19.3 | 25.6 | 26.8 | 26.3 | 24.3 | 90 | 17.8 | 22.0 | 25.3 | 24.8 | 22.3 | 90 | 14.9 | 17.3 | 19.6 | 21.2 | 19.5 | |
| 100 | 17.2 | 22.9 | 26.1 | 25.8 | 23.7 | 100 | 16.2 | 20.1 | 24.1 | 24.4 | 21.7 | 100 | 13.8 | 16.1 | 18.4 | 20.0 | 19.0 | |
| 110 | 15.6 | 20.7 | 25.5 | 25.3 | 23.0 | 110 | | 18.5 | 22.4 | 23.9 | 21.1 | 110 | | 15.1 | 17.3 | 19.0 | 18.5 | |
| 120 | | 18.9 | 24.7 | 23.6 | 21.5 | 120 | | 17.2 | 20.9 | 23.6 | 20.6 | 120 | | 14.3 | 16.4 | 18.1 | 18.0 | |
| 130 | | 17.4 | 22.7 | 20.6 | 18.5 | 130 | | 16.1 | 19.6 | 21.3 | 19.5 | 130 | | | 15.6 | 17.3 | 17.6 | |
| 140 | | 16.1 | 20.2 | 18.0 | 15.9 | 140 | | | 18.4 | 18.7 | 16.8 | 140 | | | 14.9 | 16.5 | 17.2 | |
| 150 | | | 18.0 | 15.8 | 13.6 | 150 | | | 17.4 | 16.4 | 14.5 | 150 | | | 14.3 | 15.9 | 15.2 | |
| 160 | | | 16.1 | 13.9 | 11.7 | 160 | | | 16.4 | 14.4 | 12.5 | 160 | | | 13.8 | 14.9 | 13.1 | |
| 170 | | | 14.4 | 12.2 | 10.0 | 170 | | | 14.6 | 12.7 | 10.7 | 170 | | | | 13.1 | 11.3 | |
| 180 | | | 13.0 | 10.8 | 8.5 | 180 | | | 13.1 | 11.1 | 9.2 | 180 | | | | 11.5 | 9.7 | |
| 190 | | | 11.6 | 9.5 | 7.2 | 190 | | | | 9.8 | 7.8 | 190 | | | | 10.1 | 8.3 | |
| 200 | | | | 8.3 | 6.0 | 200 | | | | 8.5 | 6.5 | 200 | | | | | 7.0 | |
| 210 | | | | 7.2 | 4.9 | 210 | | | | 7.4 | 5.4 | 210 | | | | | 5.8 | |
| 220 | | | | 6.3 | 4.0 | 220 | | | | 6.4 | 4.4 | 220 | | | | | 4.8 | |
| 230 | | | | 5.4 | 3.1 | 230 | | | | | 3.5 | 230 | | | | | 3.8 | |
| 240 | | | | | 2.3 | 240 | | | | | 2.6 | 240 | | | | | | |

This material is supplied for reference use only. Operator must refer to in-cab Crane Rating Manual and Operator's Manual to determine allowable crane lifting capacities and assembly and operating procedures.

| Main Boom + 100 ft Offset Tube Jib – 360° | | | | | | | | | | | | | | | | | |
|---|-----------------------|------|------|------|------|----------------|-----------------------|-----|-----|-----|------------|----------------|-----------------------|-----|-----|-----|-----|
| ABCDE + A [141,500 + 35,200 lb] Counterweight | | | | | | | | | | | | | | | | | |
| [All capacities listed are in kips] | | | | | | | | | | | | | | | | | |
| 5° Offset | | | | | | 15° Offset | | | | | 25° Offset | | | | | | |
| Load Radius ft | Main Boom Length – ft | | | | | Load Radius ft | Main Boom Length – ft | | | | | Load Radius ft | Main Boom Length – ft | | | | |
| | 55 | 95 | 145 | 195 | 245 | | 55 | 95 | 145 | 195 | 245 | | 55 | 95 | 145 | 195 | 245 |
| 50 | 11.4 | 12.2 | | | | 50 | | | | | | 50 | | | | | |
| 60 | 10.3 | 11.2 | 11.8 | | | 60 | 9.4 | | | | | 60 | | | | | |
| 70 | 9.4 | 10.4 | 11.1 | 11.5 | | 70 | 8.5 | 9.1 | | | | 70 | | | | | |
| 80 | 8.5 | 9.6 | 10.5 | 10.9 | 11.0 | 80 | 7.7 | 8.5 | 9.0 | | | 80 | 7.1 | 7.5 | | | |
| 90 | 7.7 | 8.9 | 9.8 | 10.4 | 10.6 | 90 | 7.0 | 7.8 | 8.5 | 8.8 | 8.9 | 90 | 6.5 | 7.0 | 7.3 | | |
| 100 | 7.0 | 8.2 | 9.2 | 9.9 | 10.1 | 100 | 6.4 | 7.3 | 8.0 | 8.4 | 8.5 | 100 | 5.9 | 6.5 | 6.9 | 7.1 | |
| 110 | 6.3 | 7.6 | 8.7 | 9.4 | 9.7 | 110 | 5.9 | 6.8 | 7.5 | 8.0 | 8.2 | 110 | 5.4 | 6.0 | 6.5 | 6.8 | |
| 120 | 5.8 | 7.0 | 8.2 | 8.9 | 9.3 | 120 | 5.4 | 6.3 | 7.1 | 7.6 | 7.8 | 120 | 5.0 | 5.7 | 6.2 | 6.5 | |
| 130 | 5.3 | 6.5 | 7.7 | 8.5 | 8.9 | 130 | 5.0 | 5.9 | 6.7 | 7.2 | 7.5 | 130 | 4.7 | 5.3 | 5.9 | 6.2 | |
| 140 | 4.8 | 6.0 | 7.2 | 8.1 | 8.5 | 140 | 4.6 | 5.5 | 6.3 | 6.9 | 7.2 | 140 | | 5.0 | 5.6 | 5.9 | |
| 150 | | 5.6 | 6.8 | 7.7 | 8.2 | 150 | | 5.1 | 6.0 | 6.6 | 6.9 | 150 | | 4.7 | 5.3 | 5.7 | |
| 160 | | 5.2 | 6.4 | 7.3 | 7.9 | 160 | | 4.8 | 5.7 | 6.3 | 6.7 | 160 | | 4.5 | 5.0 | 5.4 | |
| 170 | | 4.9 | 6.0 | 6.9 | 7.5 | 170 | | 4.6 | 5.4 | 6.0 | 6.4 | 170 | | | 4.8 | 5.2 | |
| 180 | | 4.6 | 5.7 | 6.6 | 7.2 | 180 | | | 5.1 | 5.7 | 6.1 | 180 | | | 4.6 | 5.0 | |
| 190 | | | 5.4 | 6.3 | 6.9 | 190 | | | 4.9 | 5.5 | 5.9 | 190 | | | 4.5 | 4.8 | |
| 200 | | | 5.1 | 6.0 | 6.6 | 200 | | | 4.7 | 5.3 | 5.7 | 200 | | | 4.3 | 4.7 | |
| 210 | | | 4.8 | 5.7 | 6.0 | 210 | | | 4.5 | 5.0 | 5.5 | 210 | | | | 4.5 | |
| 220 | | | 4.6 | 5.4 | 5.0 | 220 | | | | 4.8 | 5.3 | 220 | | | | 4.4 | |
| 230 | | | 4.4 | 5.2 | 4.1 | 230 | | | | 4.7 | 4.8 | 230 | | | | 4.3 | |
| 240 | | | | 5.0 | 3.3 | 240 | | | | 4.5 | 4.0 | 240 | | | | 4.4 | |
| 250 | | | | 4.8 | 2.6 | 250 | | | | 4.4 | 3.2 | 250 | | | | 3.7 | |
| 260 | | | | 4.1 | | 260 | | | | | | 260 | | | | | |
| 270 | | | | 3.5 | | 270 | | | | | | 270 | | | | | |

This material is supplied for reference use only. Operator must refer to in-cab Crane Rating Manual and Operator's Manual to determine allowable crane lifting capacities and assembly and operating procedures.

Jib Attachment Load Charts – Metric

| Main Boom + 9.1m Offset Tube Jib – 360° | | | | | | | | | | | | | | | | | |
|--|----------------------|------|------|------|------|---------------|----------------------|------|------|------|------------|---------------|----------------------|------|------|------|------|
| ABCDE + A [64 143 + 15 966 kg] Counterweight | | | | | | | | | | | | | | | | | |
| [All capacities listed are in kips (mt)] | | | | | | | | | | | | | | | | | |
| 5° Offset | | | | | | 15° Offset | | | | | 25° Offset | | | | | | |
| Load Radius m | Main Boom Length – m | | | | | Load Radius m | Main Boom Length – m | | | | | Load Radius m | Main Boom Length – m | | | | |
| | 16.8 | 29.0 | 44.2 | 59.4 | 74.7 | | 16.8 | 29.0 | 44.2 | 59.4 | 74.7 | | 16.8 | 29.0 | 44.2 | 59.4 | 74.7 |
| 9.1 | 26.9 | 26.9 | | | | 9.1 | 26.2 | | | | | 9.1 | | | | | |
| 10.7 | 26.8 | 26.9 | | | | 10.7 | 25.5 | 26.0 | | | | 10.7 | 20.5 | | | | |
| 12.2 | 26.1 | 26.9 | 26.8 | | | 12.2 | 23.4 | 25.6 | | | | 12.2 | 18.8 | 21.4 | | | |
| 15.2 | 22.8 | 26.2 | 26.3 | 24.7 | | 15.2 | 19.4 | 24.4 | 24.8 | | | 15.2 | 16.3 | 19.0 | 21.2 | | |
| 18.3 | 18.8 | 25.3 | 25.6 | 24.1 | 16.6 | 18.3 | 16.6 | 21.3 | 24.2 | 22.9 | | 18.3 | 14.5 | 17.2 | 19.4 | 21.0 | |
| 21.3 | 16.0 | 22.8 | 24.5 | 23.6 | 16.1 | 21.3 | 14.6 | 18.9 | 23.2 | 22.5 | 15.4 | 21.3 | 13.5 | 15.7 | 18.0 | 19.6 | 14.4 |
| 24.4 | 14.0 | 19.9 | 20.3 | 19.4 | 15.6 | 24.4 | | 17.0 | 20.5 | 19.7 | 14.9 | 24.4 | | 14.6 | 16.8 | 18.5 | 13.9 |
| 27.4 | | 17.6 | 17.1 | 16.1 | 15.0 | 27.4 | | 15.6 | 17.3 | 16.5 | 14.3 | 27.4 | | 13.6 | 15.8 | 16.7 | 12.6 |
| 30.5 | | 15.6 | 14.7 | 13.7 | 12.9 | 30.5 | | 14.4 | 14.8 | 13.9 | 13.1 | 30.5 | | 13.5 | 14.9 | 14.2 | 12.2 |
| 33.5 | | 13.6 | 12.7 | 11.8 | 10.8 | 33.5 | | 13.4 | 12.9 | 12.0 | 11.2 | 33.5 | | | 13.0 | 12.2 | 11.4 |
| 36.6 | | | 11.2 | 10.2 | 9.2 | 36.6 | | | 11.2 | 10.3 | 9.5 | 36.6 | | | 11.3 | 10.5 | 9.7 |
| 39.6 | | | 9.8 | 8.8 | 7.8 | 39.6 | | | 9.8 | 8.9 | 8.1 | 39.6 | | | 9.9 | 9.1 | 8.3 |
| 42.7 | | | 8.6 | 7.7 | 6.7 | 42.7 | | | 8.7 | 7.8 | 6.9 | 42.7 | | | | 7.9 | 7.1 |
| 45.7 | | | 7.6 | 6.7 | 5.7 | 45.7 | | | 7.7 | 6.8 | 5.9 | 45.7 | | | | 6.9 | 6.0 |
| 48.8 | | | 6.8 | 5.8 | 4.8 | 48.8 | | | | 5.9 | 4.9 | 48.8 | | | | 6.0 | 5.1 |
| 51.8 | | | | 5.0 | 4.0 | 51.8 | | | | 5.1 | 4.2 | 51.8 | | | | 5.2 | 4.3 |
| 54.9 | | | | 4.4 | 3.4 | 54.9 | | | | 4.4 | 3.5 | 54.9 | | | | | 3.6 |
| 57.9 | | | | 3.8 | 2.8 | 57.9 | | | | 3.8 | 2.9 | 57.9 | | | | | 3.0 |
| 61.0 | | | | 3.3 | 2.2 | 61.0 | | | | | 2.4 | 61.0 | | | | | 2.4 |
| 64.0 | | | | 2.8 | 1.8 | 64.0 | | | | | 1.9 | 64.0 | | | | | |
| 67.1 | | | | | 1.3 | 67.1 | | | | | 1.4 | 67.1 | | | | | |

This material is supplied for reference use only. Operator must refer to in-cab Crane Rating Manual and Operator's Manual to determine allowable crane lifting capacities and assembly and operating procedures.

| Main Boom + 18.3m Offset Tube Jib – 360° | | | | | | | | | | | | | | | | | |
|--|----------------------|------|------|------|------|---------------|----------------------|------|------|------|------|---------------|----------------------|------|------|------|------|
| ABCDE + A [64 143 + 15 966 kg] Counterweight | | | | | | | | | | | | | | | | | |
| [All capacities listed are in kips (mt)] | | | | | | | | | | | | | | | | | |
| 5° Offset | | | | | | 15° Offset | | | | | | 25° Offset | | | | | |
| Load Radius m | Main Boom Length – m | | | | | Load Radius m | Main Boom Length – m | | | | | Load Radius m | Main Boom Length – m | | | | |
| | 16.8 | 29.0 | 44.2 | 59.4 | 74.7 | | 16.8 | 29.0 | 44.2 | 59.4 | 74.7 | | 16.8 | 29.0 | 44.2 | 59.4 | 74.7 |
| 9.1 | 15.8 | | | | | 9.1 | | | | | | 9.1 | | | | | |
| 10.7 | 15.3 | | | | | 10.7 | | | | | | 10.7 | | | | | |
| 12.2 | 14.8 | 15.2 | | | | 12.2 | 13.1 | | | | | 12.2 | | | | | |
| 15.2 | 13.0 | 14.6 | 14.5 | | | 15.2 | 12.4 | 12.7 | | | | 15.2 | 10.6 | | | | |
| 18.3 | 12.4 | 13.0 | 13.2 | 12.7 | | 18.3 | 11.7 | 12.3 | 12.3 | | | 18.3 | 9.3 | 10.3 | | | |
| 21.3 | 11.5 | 12.6 | 12.8 | 12.5 | 11.5 | 21.3 | 10.2 | 11.9 | 12.0 | 11.7 | | 21.3 | 8.2 | 9.3 | 10.3 | | |
| 24.4 | 9.9 | 12.1 | 12.5 | 12.2 | 11.2 | 24.4 | 9.0 | 11.0 | 11.7 | 11.5 | 10.4 | 24.4 | 7.4 | 8.5 | 9.5 | 10.2 | |
| 27.4 | 8.8 | 11.6 | 12.2 | 11.9 | 11.0 | 27.4 | 8.1 | 10.0 | 11.5 | 11.2 | 10.1 | 27.4 | 6.8 | 7.8 | 8.9 | 9.6 | |
| 30.5 | 7.8 | 10.4 | 11.8 | 11.7 | 10.8 | 30.5 | 7.3 | 9.1 | 10.9 | 11.1 | 9.8 | 30.5 | 6.3 | 7.3 | 8.3 | 9.1 | |
| 33.5 | 7.1 | 9.4 | 11.6 | 11.5 | 10.4 | 33.5 | | 8.4 | 10.2 | 10.8 | 9.6 | 33.5 | | 6.8 | 7.8 | 8.6 | |
| 36.6 | | 8.6 | 11.2 | 10.7 | 9.8 | 36.6 | | 7.8 | 9.5 | 10.7 | 9.3 | 36.6 | | 6.5 | 7.4 | 8.2 | |
| 39.6 | | 7.9 | 10.3 | 9.3 | 8.4 | 39.6 | | 7.3 | 8.9 | 9.7 | 8.8 | 39.6 | | | 7.1 | 7.8 | |
| 42.7 | | 7.3 | 9.2 | 8.2 | 7.2 | 42.7 | | | 8.3 | 8.5 | 7.6 | 42.7 | | | 6.8 | 7.5 | |
| 45.7 | | | 8.2 | 7.2 | 6.2 | 45.7 | | | 7.9 | 7.4 | 6.6 | 45.7 | | | 6.5 | 7.2 | |
| 48.8 | | | 7.3 | 6.3 | 5.3 | 48.8 | | | 7.4 | 6.5 | 5.7 | 48.8 | | | 6.3 | 6.8 | |
| 51.8 | | | 6.5 | 5.5 | 4.5 | 51.8 | | | 6.6 | 5.8 | 4.9 | 51.8 | | | | 5.9 | |
| 54.9 | | | 5.9 | 4.9 | 3.9 | 54.9 | | | 5.9 | 5.0 | 4.2 | 54.9 | | | | 5.2 | |
| 57.9 | | | 5.3 | 4.3 | 3.3 | 57.9 | | | | 4.4 | 3.5 | 57.9 | | | | 4.6 | |
| 61.0 | | | | 3.8 | 2.7 | 61.0 | | | | 3.9 | 2.9 | 61.0 | | | | 3.2 | |
| 64.0 | | | | 3.3 | 2.2 | 64.0 | | | | 3.4 | 2.4 | 64.0 | | | | 2.6 | |
| 67.1 | | | | 2.9 | 1.8 | 67.1 | | | | 2.9 | 2.0 | 67.1 | | | | 2.2 | |
| 70.1 | | | | 2.4 | 1.4 | 70.1 | | | | | 1.6 | 70.1 | | | | 1.7 | |
| 73.2 | | | | | 1.0 | 73.2 | | | | | 1.2 | 73.2 | | | | | |

This material is supplied for reference use only. Operator must refer to in-cab Crane Rating Manual and Operator's Manual to determine allowable crane lifting capacities and assembly and operating procedures.

| Main Boom + 30.5m Offset Tube Jib – 360° | | | | | | | | | | | | | | | | | |
|--|----------------------|------|------|------|------|---------------|----------------------|------|------|------|------|---------------|----------------------|------|------|------|------|
| ABCDE + A [64 143 + 15 966 kg] Counterweight | | | | | | | | | | | | | | | | | |
| [All capacities listed are in kips (mt)] | | | | | | | | | | | | | | | | | |
| 5° Offset | | | | | | 15° Offset | | | | | | 25° Offset | | | | | |
| Load Radius m | Main Boom Length – m | | | | | Load Radius m | Main Boom Length – m | | | | | Load Radius m | Main Boom Length – m | | | | |
| | 16.8 | 29.0 | 44.2 | 59.4 | 74.7 | | 16.8 | 29.0 | 44.2 | 59.4 | 74.7 | | 16.8 | 29.0 | 44.2 | 59.4 | 74.7 |
| 15.2 | 5.2 | 5.5 | | | | 15.2 | | | | | | 15.2 | | | | | |
| 18.3 | 4.7 | 5.1 | 5.4 | | | 18.3 | 4.3 | | | | | 18.3 | | | | | |
| 21.3 | 4.3 | 4.7 | 5.0 | 5.2 | | 21.3 | 3.9 | 4.1 | | | | 21.3 | | | | | |
| 24.4 | 3.9 | 4.4 | 4.8 | 4.9 | 5.0 | 24.4 | 3.5 | 3.9 | 4.1 | | | 24.4 | 3.2 | 3.4 | | | |
| 27.4 | 3.5 | 4.0 | 4.4 | 4.7 | 4.8 | 27.4 | 3.2 | 3.5 | 3.9 | 4.0 | 4.0 | 27.4 | 2.9 | 3.2 | 3.3 | | |
| 30.5 | 3.2 | 3.7 | 4.2 | 4.5 | 4.6 | 30.5 | 2.9 | 3.3 | 3.6 | 3.8 | 3.9 | 30.5 | 2.7 | 2.9 | 3.1 | 3.2 | |
| 33.5 | 2.9 | 3.4 | 3.9 | 4.3 | 4.4 | 33.5 | 2.7 | 3.1 | 3.4 | 3.6 | 3.7 | 33.5 | 2.4 | 2.7 | 2.9 | 3.1 | |
| 36.6 | 2.6 | 3.2 | 3.7 | 4.0 | 4.2 | 36.6 | 2.4 | 2.9 | 3.2 | 3.4 | 3.5 | 36.6 | 2.3 | 2.6 | 2.8 | 2.9 | |
| 39.6 | 2.4 | 2.9 | 3.5 | 3.9 | 4.0 | 39.6 | 2.3 | 2.7 | 3.0 | 3.3 | 3.4 | 39.6 | 2.1 | 2.4 | 2.7 | 2.8 | |
| 42.7 | 2.2 | 2.7 | 3.3 | 3.7 | 3.9 | 42.7 | 2.1 | 2.5 | 2.9 | 3.1 | 3.3 | 42.7 | | 2.3 | 2.5 | 2.7 | |
| 45.7 | | 2.5 | 3.1 | 3.5 | 3.7 | 45.7 | | 2.3 | 2.7 | 3.0 | 3.1 | 45.7 | | 2.1 | 2.4 | 2.6 | |
| 48.8 | | 2.4 | 2.9 | 3.3 | 3.6 | 48.8 | | 2.2 | 2.6 | 2.9 | 3.0 | 48.8 | | 2.0 | 2.3 | 2.4 | |
| 51.8 | | 2.2 | 2.7 | 3.1 | 3.4 | 51.8 | | 2.1 | 2.4 | 2.7 | 2.9 | 51.8 | | | 2.2 | 2.4 | |
| 54.9 | | 2.1 | 2.6 | 3.0 | 3.3 | 54.9 | | | 2.3 | 2.6 | 2.8 | 54.9 | | | 2.1 | 2.3 | |
| 57.9 | | | 2.4 | 2.9 | 3.1 | 57.9 | | | 2.2 | 2.5 | 2.7 | 57.9 | | | 2.0 | 2.2 | |
| 61.0 | | | 2.3 | 2.7 | 3.0 | 61.0 | | | 2.1 | 2.4 | 2.6 | 61.0 | | | 2.0 | 2.1 | |
| 64.0 | | | 2.2 | 2.6 | 2.7 | 64.0 | | | 2.0 | 2.3 | 2.5 | 64.0 | | | 2.0 | 2.2 | |
| 67.1 | | | 2.1 | 2.4 | 2.3 | 67.1 | | | | 2.2 | 2.4 | 67.1 | | | 2.0 | 2.1 | |
| 70.1 | | | 2.0 | 2.4 | 1.9 | 70.1 | | | | 2.1 | 2.2 | 70.1 | | | 2.0 | 2.0 | |
| 73.2 | | | | 2.3 | 1.5 | 73.2 | | | | 2.0 | 1.8 | 73.2 | | | | 2.0 | |
| 76.2 | | | | 2.2 | 1.2 | 76.2 | | | | 2.0 | 1.5 | 76.2 | | | | 1.7 | |
| 79.2 | | | | 1.9 | | 79.2 | | | | | | 79.2 | | | | | |
| 82.3 | | | | 1.6 | | 82.3 | | | | | | 82.3 | | | | | |

This material is supplied for reference use only. Operator must refer to in-cab Crane Rating Manual and Operator's Manual to determine allowable crane lifting capacities and assembly and operating procedures.

This Page Intentionally Blank

This Page Intentionally Blank

This Page Intentionally Blank

This Page Intentionally Blank

Link-Belt Cranes Lexington, Kentucky www.linkbelt.com

Link-Belt® is a registered trademark. Copyright 2026. We are constantly improving our products and therefore reserve the right to change designs and specifications.