

Technical Data

Specifications & Capacities

TCC 1800

Telescopic Crawler Crane

180 Ton (163 metric ton)



CAUTION: This material is supplied for reference use only. Operator must refer to in-cab Crane Rating Manual and Operator's Manual to determine allowable crane lifting capacities, assembly, and operating procedures.

This Page Intentionally Blank

Table Of Contents

Upper Structure	1
Frame	1
Engine	1
Hydraulic System	1
Load Hoist Drums	1
Swing System	1
Counterweight	1
Operator's Cab	2
Rated Capacity Limiter (RCL)	2
Machinery House	2
Catwalks	2
Lower Structure	3
Carbody	3
Side Frames	3
Side Frame Beams	3
V-CALC	3
Travel and Steering	3
Jack System	3
Tool Box	3
Boom	4
Design	4
Auxiliary Power Unit (APU)	4
Boom	4
Auxiliary Lifting Sheave	4
Boom Wear Pads	4
Boom Head	4
Boom Elevation	4
Optional Equipment	5
Hook Blocks and Balls	5
SmartFly	5
Fly Extensions	5
Dimensions	6
Base Crane	6
Side Frames	9
Auxiliary Lifting Sheave	9
Fly	9
Fly Extension	10
Counterweights	10
Hook Blocks	12
Hook Balls	12
Assembly Diagram	14
Working Weights	15
Transport Drawing	15
Load Hoist Performance	15

Boom Extend Modes	16
Boom Mode Performance – Imperial	17
Working Areas	18
Working Range Diagrams – Imperial	19
197.3' Main Boom.....	19
197.3' Main Boom + 10' SmartFly.....	20
197.3' Main Boom + 32.5'–55' SmartFly.....	21
197.3' Main Boom + 55' SmartFly + 54' Lattice Extensions	22
Main Boom Load Charts – Imperial	23
Fly Attachment Load Charts	25
Working Range Diagrams – Metric	32
60.1m Main Boom	32
60.1m Main Boom + 3.1m SmartFly.....	33
60.1m Main Boom + 9.9m + 16.8m SmartFly.....	34
60.1m Main Boom + 16.8m SmartFly + 16.5m Lattice Extensions.....	35
Boom Mode Performance – Metric	36
Main Boom Load Charts – Metric	37
Fly Attachment Load Charts – Metric	39

Upper Structure

Frame

All welded steel frame with precision machined surfaces for mating parts

Turntable Bearing

- Inner race is bolted to upper frame
- Outer race with external swing gear is bolted to lower frame

Engine

Engine

- Full pressure lubrication, oil filter, air cleaner, hour meter, throttle, and electric control shutdown
- Centralized accessible, fuel, oil, and air filters

Specification	Cummins QSB 6.7
Emissions Compliance Level:	Tier 4f Stage V ⁽¹⁾
Numbers of Cylinders	6
Cycle	4
Bore & Stroke: inch (mm)	4.21 x 4.88 (107 x 124)
Piston Displacement: in ³ (L)	408 (6.7)
Max. Brake Horsepower: hp (kW)	310 (231) @ 2,200 rpm
Peak Torque: ft lb (Nm)	950 (1 288) @ 1,500 rpm
Electric/starting systems: volts	24v
Alternator: amps	140 amp
Crankcase Capacity: qt (L)	20 (18.9)
<ul style="list-style-type: none"> • Water/fuel separator w/ heater and water in fuel (WIF) sensor • 120-volt block heater • Grid heater – 200 amp • ⁽¹⁾ Can only be sold and/or operated where Tier 4f and Stage V off-high way emission standards are accepted 	

Fuel Tank

One 110 gal (416L) capacity fuel tank

One 15 gal (57L) capacity DEF tank

Diesel Coolant Heater – Optional – A programmable engine heater that uses diesel fuel to preheat the coolant

Engine Air Shutoff – Optional – A valve that immediately blocks the engine's air supply, causing an instant shutdown

Hydraulic System

Hydraulic Pumps

The pump arrangement is designed to provide hydraulically powered functions allowing positive, precise control with independent or simultaneous operation of all crane functions

- Two variable displacement pumps provide independent control for hoist drums, boom hoist, boom extend, and right & left travel, and auxiliary/setup functions
- Closed loop piston pump controls the swing function. A 2-section gear pump controls hydraulic oil cooler and swing charge pressure

Hydraulic Reservoir

- 264.5 gal (1,001L) capacity equipped with sight level gauge. Diffusers built in for deaeration
- Optional hydraulic arctic temperature oil

Filtration

Two 5 micron, full flow return line filter. Accessible for easy filter replacement

Counterbalance Valves

All boom hoist and boom extend cylinder are equipped motors with counterbalance valves to provide positive load lowering and prevent accidental load drop if the hydraulic pressure is suddenly lost

Load Hoist Drums

Main and Auxiliary Winches

- Axial piston, full and half displacement (2-speed) motor driven through planetary reduction unit for positive control under all load conditions
- Grooved lagging
- Power up/down mode of operation
- Hoist drum cable follower – standard
- Drum rotation indicator
- Drum diameter: 15 in (38.1cm)
- Rope length:
 - Main: 900 ft (274.3m)
 - Auxiliary: 675 ft (205.74m)
- Maximum rope storage: 1,235 ft (376.4m)
- Button-end terminator

Drum Wrap Indicator

- **Third wrap function kickout –** Visually and audibly warns the operator when the wire rope is on the first/bottom layer and provides a function kickout when the wire rope is down to the last three wraps

Swing System

Dual Swing Drives

Motor/Planetary – Bi-directional hydraulic swing motor mounted to a planetary reducer for 360° continuous smooth swing at 1.7 rpm

Swing Park Brake – 360°, electric over hydraulic, (spring applied/hydraulic released) multi-disc brake mounted on the planetary reducer. Operated by a switch in the operator's cab

House Lock – Two position house lock (boom over front or rear) operated from the operator's cab

Counterweight

Consists of a six piece counterweight design:

- One "A" counterweight – 11,000 lb (4 990kg)
- One "B" counterweight – 22,000 lb (9 979kg)
- One "C" counterweight – 22,000 lb (9 979kg)
- One "D" counterweight – 22,000 lb (9 979kg)
- Total Upper Counterweight "ABCD" is 77,000 lbs (34 927kg)
- Two lower counterweights, 4,500 lb (2 041kg) each
- Remote Control Counterweight removal
- Upper and lower counterweight sensing

Operator's Cab

Fully enclosed modular steel compartment is independently mounted and padded to protect against vibration and noise

- Cab Tilt from 0°–20°
- All tinted/tempered safety glass
- Sliding entry door and front and rear window
- Swing up top hatch window
- Front windshield and top hatch wipers and washers
- Door and window locks
- Air conditioner
- Hot water heater
- Adjustable Sun visor
- Cup holder
- Six way adjustable, cushioned seat with seat belt
- Fire extinguisher
- Two position travel swing lock
- Boom Telescope Foot Pedal
- Swing Brake Foot Pedal
- Travel Foot Pedal
- Throttle Pedal
- Single axis controls
- Bubble type level
- Ergonomic gauge layout
- Emergency–Stop Button
- Monitor for rear view, winch view, and right side cameras
- AM/FM/NOAA Radio/Bluetooth
- One external amber strobe light
- Cab mounted external LED work light
- First aid kit
- Optional dual axis (joystick) controls
- Optional external RCL indicator

Rated Capacity Limiter (RCL)

Link-Belt Pulse 2.0 – The Link-Belt in-house designed, total crane operating system that utilizes the 10" (25.4cm) true color touch screen display as a readout and operator interface for the following systems:

- Engine instrumentation panel (tachometer, voltmeter, engine oil pressure, engine water temperature, fuel level, hydraulic oil temperature, hour meter, and service monitor system)
 - Crane configuration
 - Boom length
 - Boom head height
 - Allowed load and % of allowed load
 - Data logging
 - Boom angle
 - Radius of load
 - Actual load
 - Operator settable alarms with kickouts (include):
 - Maximum and minimum boom angles
 - Maximum tip height
 - Maximum boom length
 - Swing left/right positions
 - Operator defined area (imaginary plane)
 - Internal RCL light bars
 - Live/Simulated Ground Bearing Pressure readings
 - List capacities for 1°, 2°, 3° and 4°
 - 360° pick & carry capacities on firm level ground
 - Wind speed
 - Advanced diagnostics
 - Backward Stability
 - Fine metering
- Telematics** – Cellular-based data logging and monitoring system that provides:
- Location and operational settings
 - Routine maintenance
 - Crane and engine monitoring
 - Diagnostic and fault codes
 - Load on hook

Machinery House

- Hinged doors for machinery access
- LED compartmental lighting
- Centralized electrical locations
- Sound pad insulation on house doors
- Upper centralized grease banks
- 360° remote control high intensity floodlight
- Battery Disconnects
- Hour Meter
- Anti-skid walking surfaces
- LED work lights
- Fall arrest anchors
- Foldable handrails

Catwalks

Wide catwalks on left and ride side that fold up and pin for reduced travel width

Lower Structure

Carbody

Lower Frame

All welded box construction frame with precision machined surfaces for turntable bearing and side frame pinning

Side Frames

Side Frames

All welded, precision machined, steel frames with hook and pin design. Hydraulic pinning controlled via wireless remote control or carbody-mounted controls

- 18 ft 5 in (5.6m) track gauge
- 26 ft 9 in (8.2m) overall length
- Sealed (oil filled) idler and drive planetaries
- 2 speed travel drives
- Hydraulic self adjusting tracks
- Adjustable swing boundary pipes that stow on the side frame

Track Rollers

- Eleven sealed (oil filled) bottom track
- Three sealed (oil filled) top track rollers
- Heat treated, mounted on anti-friction bearings

Tracks

- Heat treated tracks and track pins, self-cleaning 2-bar grouser shoes with dirt seals
- 39 in (1 000mm) wide track shoes with nylon pad inserts
- Optional flat steel or "street" pads
- 65 track shoes per side

Take Up Idlers

Cast steel, heat treated, self-cleaning, mounted on sealed tapered roller bearings

Side Frame Beams

Four all welded box conduction axles with precision machined surfaces. Each axle has an independent cylinder for even extension and retraction

V-CALC

Variable Confined Area Lifting Capacities (V-CALC) is directly incorporated into the Pulse 2.0 display allowing multiple symmetrical or asymmetrical sideframe configurations of fully extended, intermediate, and fully retracted with live on screen working radii, utilizing 360° charts and swing arrest

Travel and Steering

Each side frame contains a electro-hydraulic controlled, bi-directional, axial piston motor and a planetary gear reduction unit to provide positive control under all load conditions

- 2-speed travel
- Individual control provides smooth, precise maneuverability including full counter-rotation
- Spring applied, hydraulically released multiple wet-disc type brake controlled automatically
- Maximum travel speed is 1.5 mph (2.4km/h)
- Designed to 40% gradeability

Jack System

System contains four hydraulic cylinders individually mounted on swing-out beams

- Individual jack cylinders are operated by remote control, or can be operated by carbody-mounted controls
- Minimum height of carbody when resting on pontoons is 1 ft 5 in (43.2cm)
- Maximum height of carbody with jack fully extended is 3 ft 9 in (114.3cm)
- Maximum Ground Bearing Pressure from jack's Pontoons (on firm ground): 217 PSI (15.26kg/cm²)

Tool Box

One lockable heavy duty steel design tool box built into the front carbody counterweight

Boom

Design

Six section, greaseless formed boom constructed of extra high tensile steel consisting of one base section and five telescoping sections. The two plate design of each section has multiple longitudinal bends for superior strength. Each telescoping section extends independently by means of one double – action, single stage hydraulic cylinder with integral holding valves

Auxiliary Power Unit (APU)

Optional climate control system designed to regulate cab temperature while providing power to the Pulse 2.0 display, interior and exterior lighting, radio, camera system while the main unit's engine is off

Boom

- 42.7 ft – 197.3 ft (13 – 60.1m) six section pin & latch boom
- Three pinned positions of 0%, 50%, and 100% on each boom section
- Mechanical boom angle indicator
- Boom base LED flood light
- Optional boom launch with quick disconnects
- Seven boom extend modes (EM1 – EM7), controlled from the operators cab, provide superior capacities by varying the extension of the telescoping sections:
 - EM1 extends to 197.3 ft (60.1m)
 - EM2 extends to 182.7 ft (55.7m)
 - EM3 extends to 165.9 ft (50.6m)
 - EM4 extends to 150.9 ft (45.9m)
 - EM5 extends to 136.3 ft (41.5m)
 - EM6 extends to 121.8 ft (37.1m)
 - EM7 extends to 106.7 ft (32.5m)
- Maximum tip height for each extend mode is:
 - EM1 extends to 206.4 ft (62.9m)
 - EM2 extends to 191.9 ft (58.5m)
 - EM3 extends to 175.3 ft (53.4m)
 - EM4 extends to 160.4 ft (48.9m)
 - EM5 extends to 146.0 ft (44.5m)
 - EM6 extends to 131.6 ft (40.1m)
 - EM7 extends to 116.7 ft (35.6m)

Auxiliary Lifting Sheave

- Single 16.4 in (41.7cm) root diameter nylon sheave
- Easily removable wire rope guards
- Does not affect erection of the fly or use of the main head sheaves

Boom Wear Pads

- Wear pads with Teflon inserts that self – lubricate the boom sections, inserts are universal for the boom
- Bottom rear wear pads are universal for all boom sections
- Top front wear pads are universal for all boom sections
- Top rear wear pads are common for T2, T3, T4, and T5, boom sections

Boom Head

- Six 16.4 in (41.7cm) root diameter nylon sheaves to handle up to 14 parts of line with auxiliary lifting sheave
- Easily removable wire rope guards
- Rope dead end lugs on either side of the boom head
- Boom head is designed for quick-reeve of the hook block
- Wire rope reeve assist tool
- Fall arrest anchors
- Wireless Wind Speed Indicator
- Optional heavy lift sheave package to achieve 17 parts of line
- Optional boom tip marker light and flag

Boom Elevation

- One double acting hydraulic cylinder with integral holding valve
- Boom elevation: -2.1° to 83°

Optional Equipment

Hook Blocks and Balls

- 12 ton (10.9mt) swivel hook ball with safety latch
- 40 ton (36.3mt) 1 sheave quick-reeve hook block with safety latch
- 75 ton (68mt) 3 sheave quick-reeve hook block with safety latch
- 120 ton (108.8mt) 5 sheave quick-reeve hook block with safety latch
- 160 ton (145.2mt) 7 sheave quick-reeve duplex hook block with dual safety latches
- 225 ton (204.1mt) 10 sheave quick-reeve duplex hook block with dual safety latches

SmartFly

- Link-Belt SmartFly Technology – Simple one-person erection and storage technology that minimizes work at height
- 10ft (3.05m) three piece bi-fold lattice SmartFly, manually or hydraulically offsettable from 0°–45°. Maximum tip height is 216.3 ft (65.9m)
- 10–32.5 ft (3.05–9.90m) three piece bi-fold lattice SmartFly, manually or hydraulically offsettable from 0°–45°. Maximum tip height is 238.6 in (72.7m)
- 10–32.5–55 ft (3.05–9.90–16.76m) three piece bi-fold lattice SmartFly, manually or hydraulically offsettable from 0°–45°. Maximum tip height is 260.9 ft (79.5m)

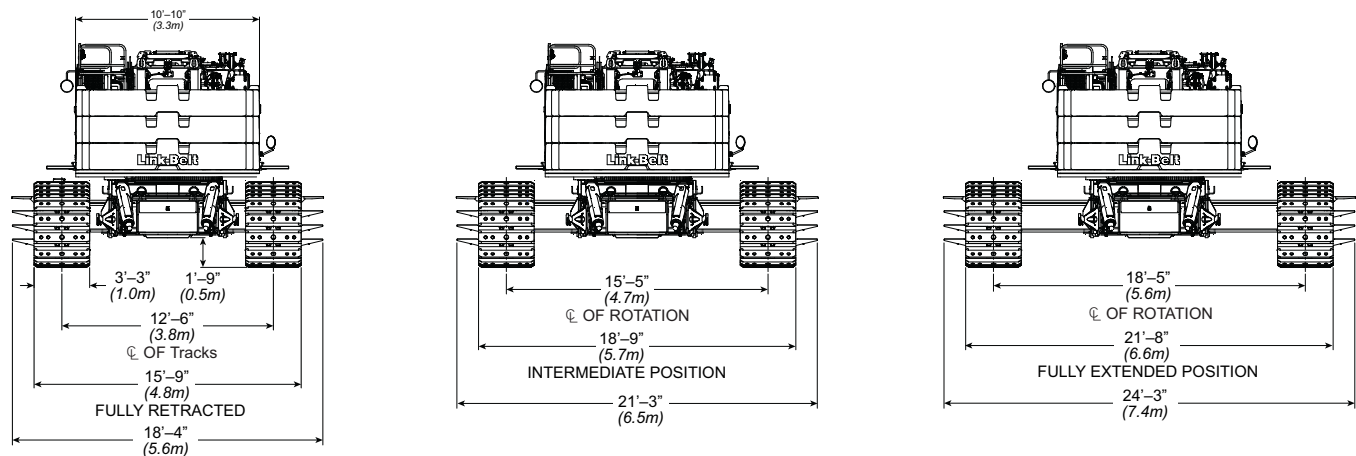
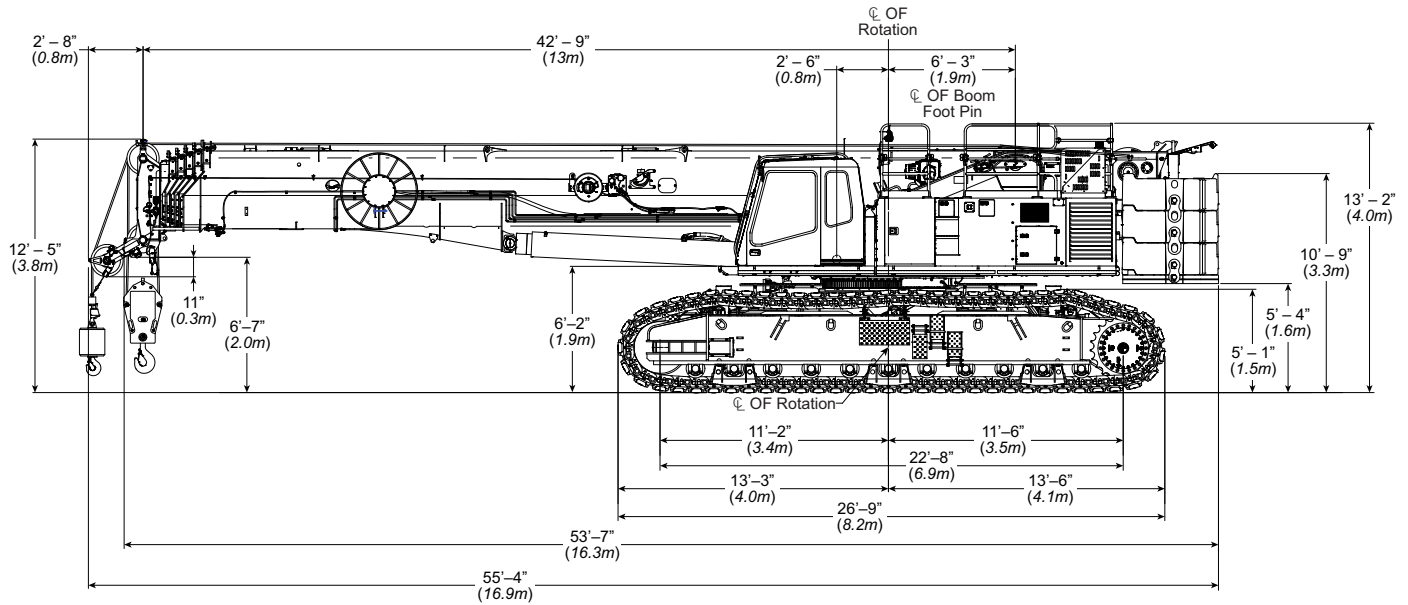
Fly Extensions

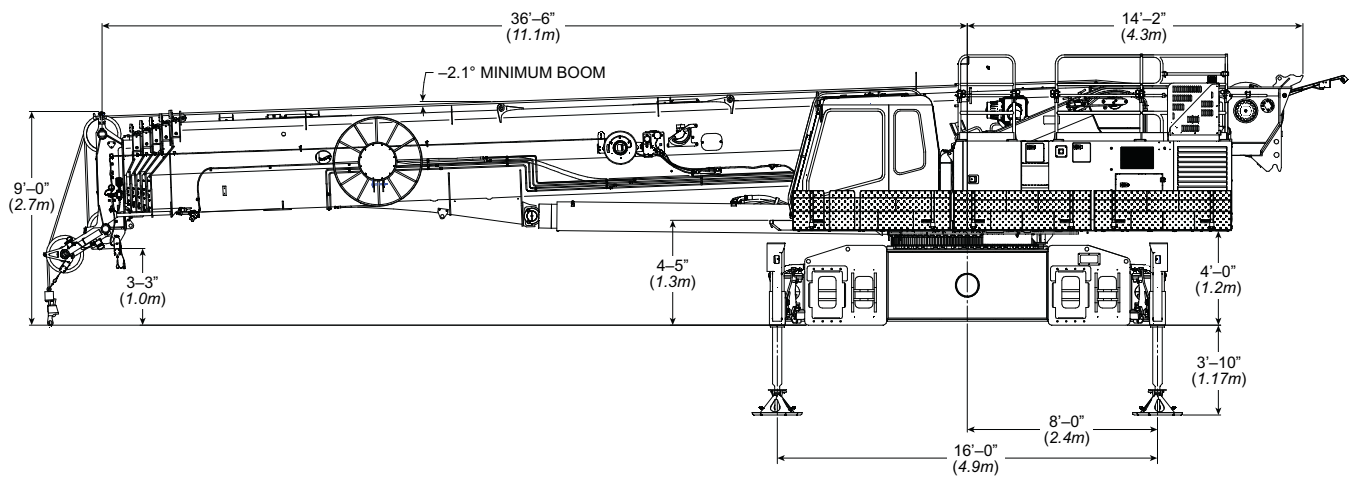
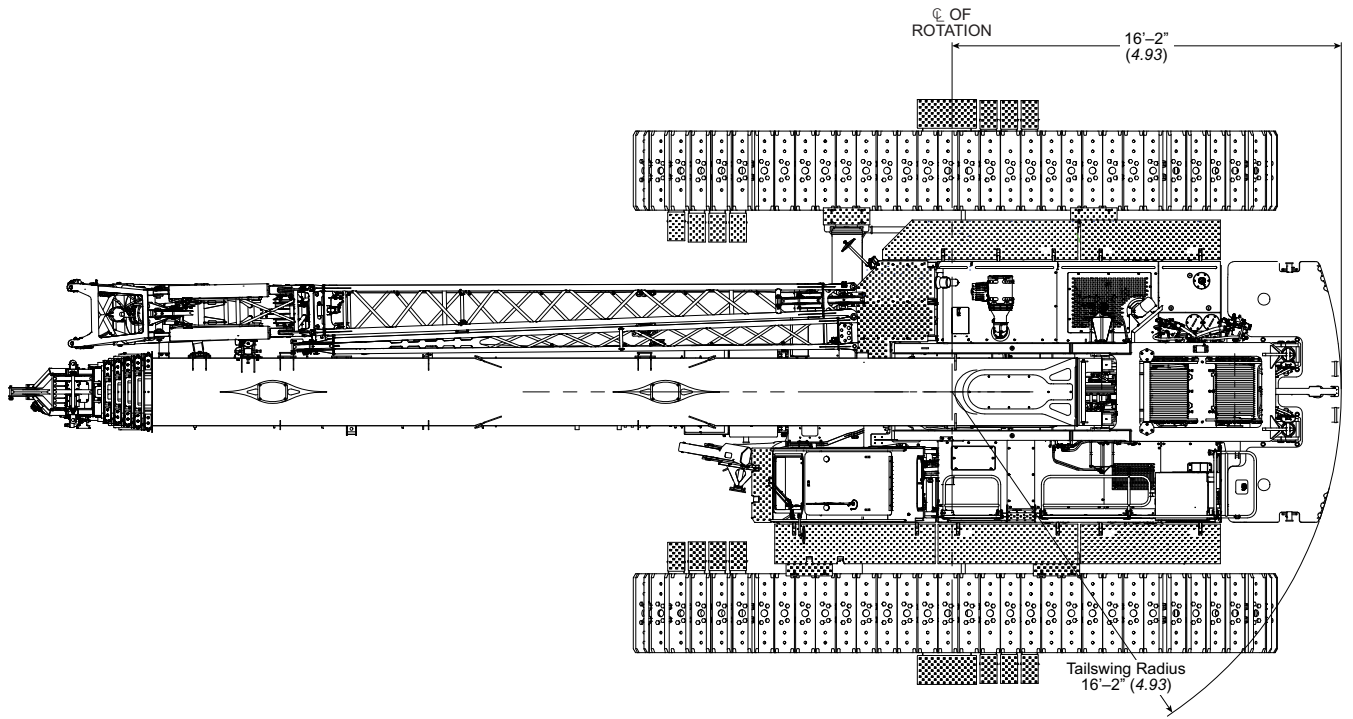
- One 18 ft (5.49m) lattice extension, equipped with one 16.38 in (41.6cm) root diameter nylon deflector sheave to be mounted between the boom head and fly options. Maximum tip height is 278.7 ft (84.9m)
- Two 18 ft (5.49m) lattice extensions, equipped with one 16.38 in (41.6cm) root diameter nylon deflector sheave to be mounted between the boom head and fly options. Maximum tip height is 296.5 ft (90.4m)
- Three 18 ft (5.49m) lattice extensions, equipped with one 16.38 in (41.6cm) root diameter nylon deflector sheave to be mounted between the boom head and fly options. Maximum tip height is 314.3 ft (95.8m)

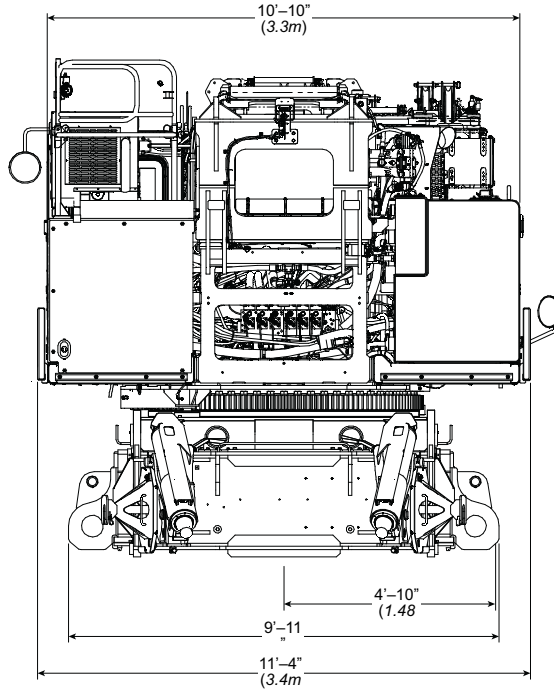
Dimensions

Base Crane

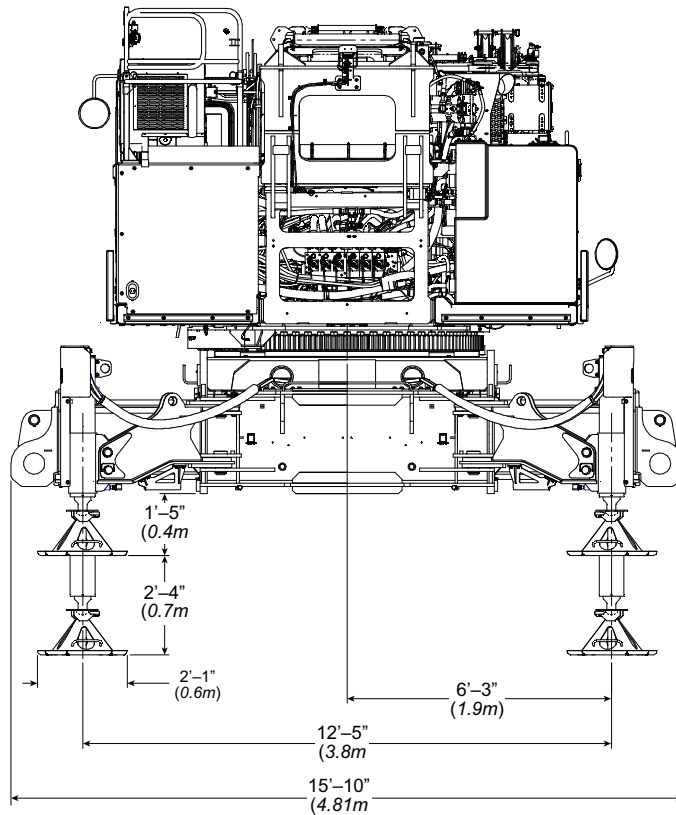
General Dimensions	English	Metric
Basic Boom	42.7 – 197.3 ft	13 – 60.1m
Minimum Load Radius	8 ft	2.43m
Maximum Boom Angle	83°	83°
Track Shoe Width	39 in	1 000mm







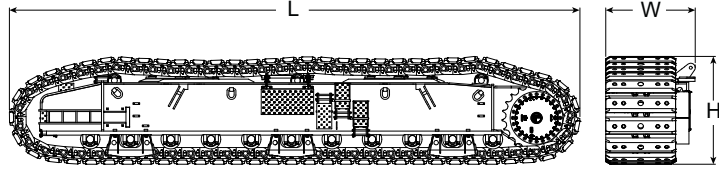
Jacks In Transport Position
 side Frames Removed
 Upper Counterweight Removed
 Lower Counterweight Removed
 Catwalks Folded Up



Side Frames

Side Frames ②

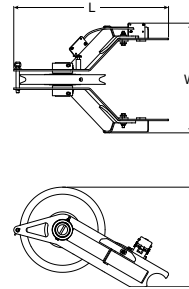
Length	345.53 in	(8.78m)
Width	56.61 in	(1.44m)
Height	63.16 in	(1.60m)
Weight		
• With Nylon Pad Inserts:	38,532lb	(17478kg)
• Without Nylon Pad Inserts:	36,941lb	(16756kg)
• With Flat Pads*:	38,520lb	(17472kg)



Auxiliary Lifting Sheave

Auxiliary Lifting Sheave ①

Length	34.53 in	(0.88m)
Width	24.47 in	(0.62m)
Height	22.22 in	(0.56m)
Weight	108 lb	(49kg)

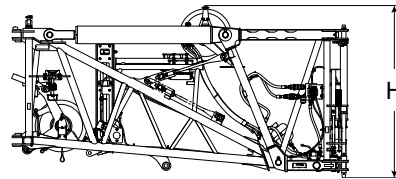
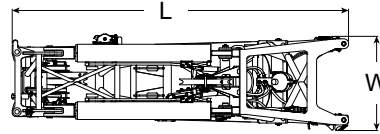


Fly

10 ft (3m)

One Piece Lattice SmartFly* ①

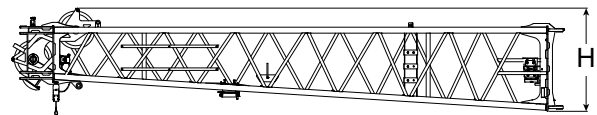
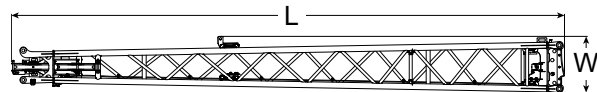
Length	10 ft 3.5 in	(3.14m)
Width	34.61 in	(0.88m)
Height	63.23 in	(1.61m)
Weight		
Hydraulic Offset	2,154 lb	(977kg)



22 ft 6 in (6.86m) Addition To Base Fly for 10–32.5 (3.04–9.9m) ft Fly

One Piece Lattice SmartFly* ①

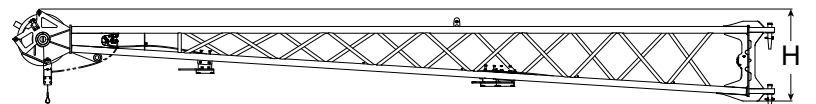
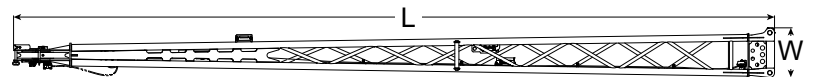
Length	23 ft 2.62 in	(7.08m)
Width	27.63 in	(0.70m)
Height	51.97 in	(1.32m)
Weight	1,243 lb	(563.82kg)



22 ft 6 in (6.86m) Lattice Fly Tip (Addition To Base Fly For 10–32.5–55 ft (3.05–9.90–16.7m)

Bi-fold SmartFly* ①

Length	23 ft 7 in	(7.19m)
Width	18.38 in	(0.47m)
Height	34.16 in	(0.87m)
Weight	705lb	(319.8kg)



Number inside black circle “①” = # of components

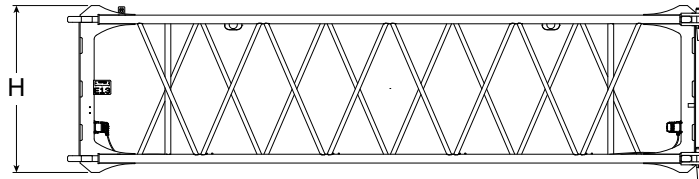
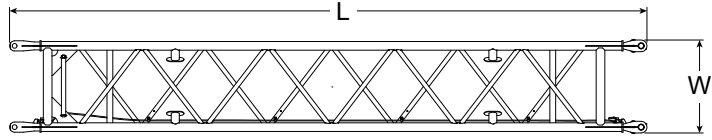
* – Optional equipment

Fly Extension

18 ft (5.49m) Lattice Fly

Extension* 1

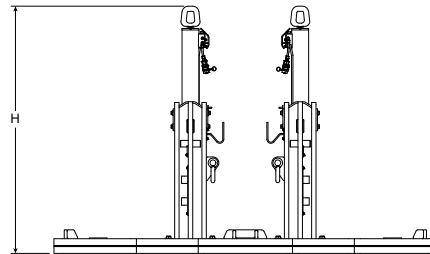
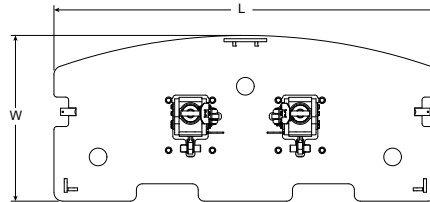
Length	18 ft 3.8in	(5.58m)
Width	32.00 in	(0.81m)
Height	57.50 in	(1.46m)
Weight	936 lb	(424.6kg)



Counterweights

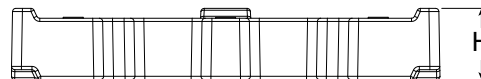
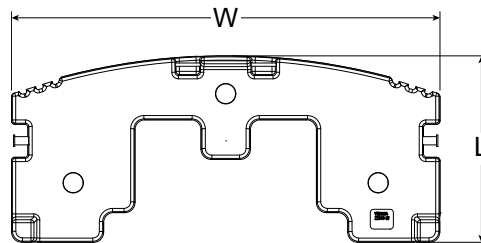
Upper Counterweight Tray 1

Length	130 in	(3 302mm)
Width	56.25 in	(1 429mm)
Height	83.93 in	(2 131mm)
Weight	11,010 lb	(4.99mt)



Counterweight Slab 3

Length	56.54 in	(1.44m)
Width	129.96 in	(3.30m)
Height	21.63 in	(0.55m)
Weight	22,000 lb	(9.9t)

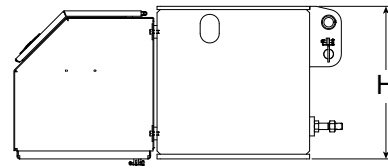
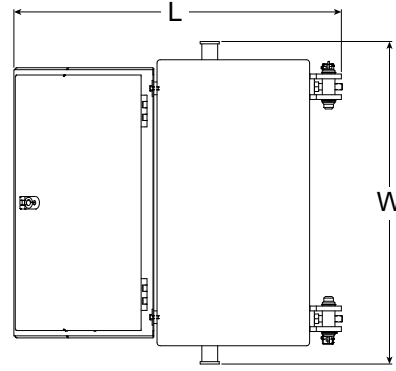


Number inside black circle "1" = # of components

* - Optional equipment

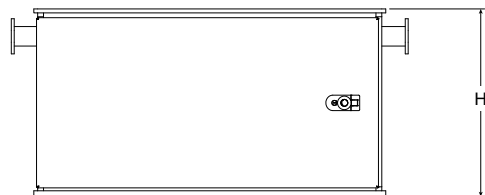
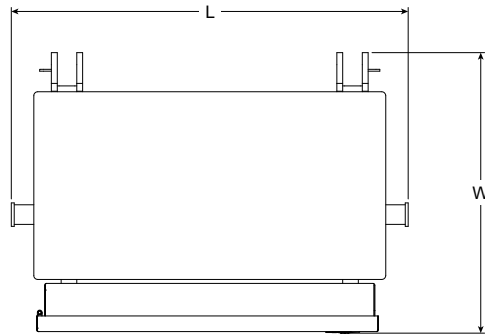
Lower Front Counterweight 1

Length	51.52 in	(1 308.60mm)
Width	50.75 in	(1 289.05mm)
Height	24.00 in	(609.6mm)
Weight	4,790 lb	(2.25t)



Lower Rear Counterweight 1

Length	50.75 in	(1 289mm)
Width	29.50 in	(749.3mm)
Height	24.00 in	(609.6mm)
Weight	4,500 lb	(2.25t)



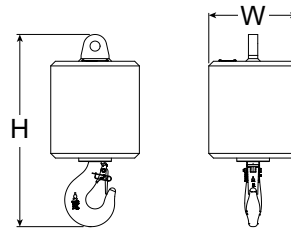
Number inside black circle "1" = # of components
 * – Optional equipment

Hook Balls

12 Ton (10.9mt) Swivel

Hook Ball* 1

Width	15.75 in	(0.40m)
Height	29.65 in	(0.75m)
Weight	808.7 lb	(366.8kg)

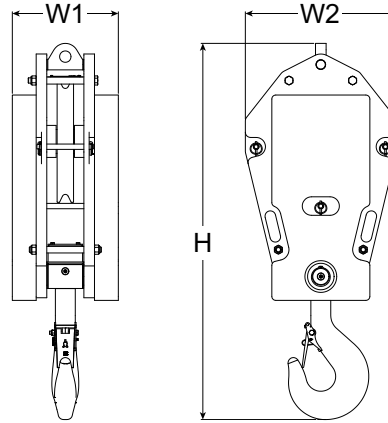


Hook Blocks

40 Ton (37mt)

1-Sheave Hook Block* 1

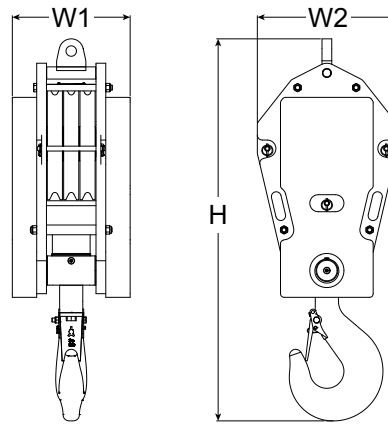
Width1	15.75 in	(0.40m)
Width2	22.44 in	(0.57m)
Height	55.88 in	(1.42m)
Weight	1,493.6 lb	(677.5kg)



75 Ton (68mt)

3-Sheave Hook Block* 1

Width1	19 in	(0.48m)
Width2	22.44 in	(0.57m)
Height	61.69 in	(1.57m)
Weight	1,951 lb	(885kg)

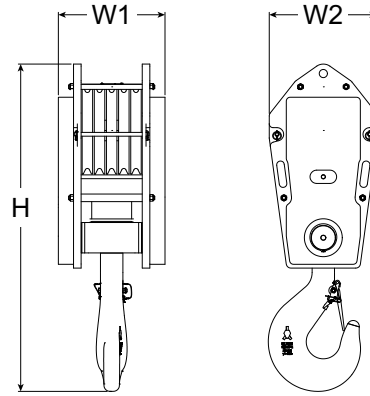


Number inside black circle "1" = # of components

* - Optional equipment

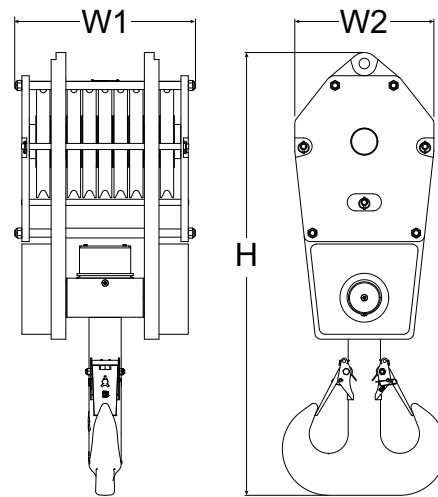
120 Ton (109mt)
5-Sheave Hook Block* ①

Width1	22.13 in	(0.56m)
Width2	22.44 in	(0.57m)
Height	67.88 in	(1.72m)
Weight	2,500 lb	(1134kg)



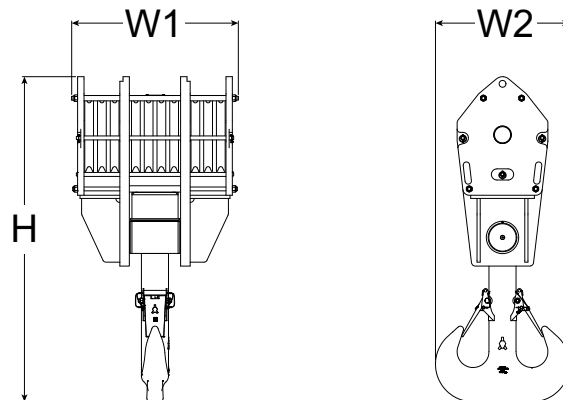
160 Ton (145.2mt)
7-Sheave Hook Block* ①

Width1	26.88 in	(0.68m)
Width2	22.44 in	(0.57m)
Height	71.44 in	(1.81m)
Weight	3148 lb	(1 427.9kg)



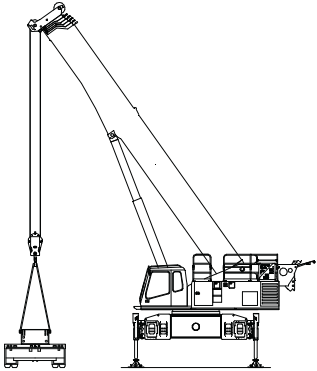
225 Ton (204.1mt)
10-Sheave Hook Block* ①

Width1	38.25 in	(0.97m)
Width2	22.44 in	(0.57m)
Height	80.40 in	(2.04m)
Weight	3,750 lb	(1 700.97kg)

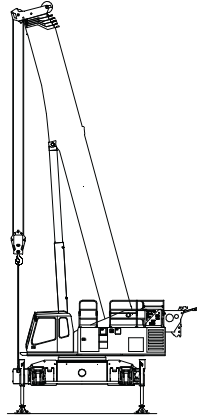


Number inside black circle "①" = # of components
 * – Optional equipment

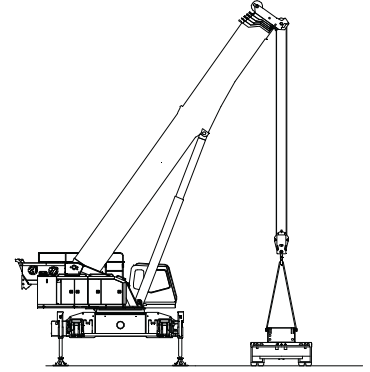
Assembly Diagram



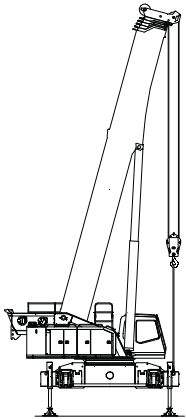
1



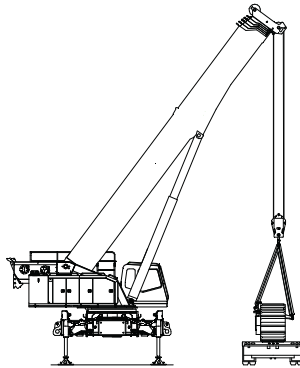
2



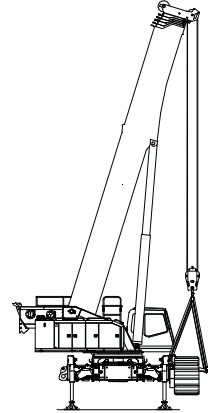
3



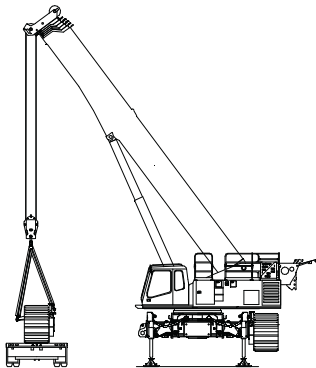
4



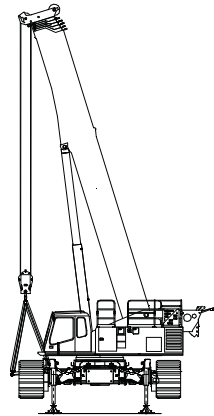
5



6



7



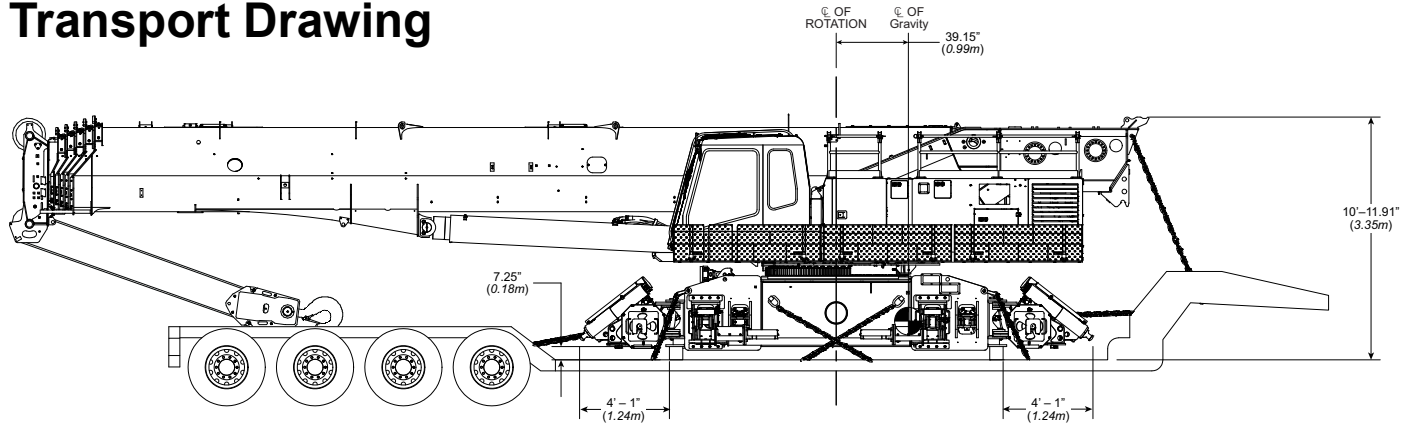
8

Working Weights

Option	Description	Gross Weight lb (kg)	Ground Bearing Pressure (on soft ground) psi (kg/cm ²)
1	Base crane, "ABCD" upper counterweight, 2 piece lower counterweight, 900 ft (274.3m) type "KC" main wire rope, 675 ft (205.8m) type "KC" auxiliary wire rope, 3-piece SmartFly, 120 ton (110mt) 5 sheave hook block, 12 ton (10.8mt) hook ball, and a 250 lb (113.4kg) operator.	275,203 (124 830kg)	13.33 (0.94)

Notes: Ground bearing pressure is based on the total weight distributed evenly over the track contact area.

Transport Drawing



Transport Weight – 107,967 lb (48 973kg)

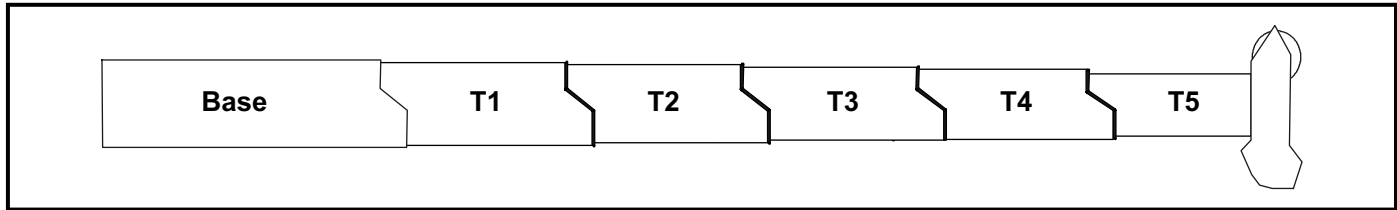
Base crane, 900 ft (274.3m) main and 675 ft (205.8m) auxiliary type "KC" wire ropes, 120 ton hook block, and 10 ft (3.05m) hydraulic 1-piece SmartFly

Load Hoist Performance

Main (Front) and Auxiliary (Rear) Winches – 1.02 in Rope										
Layer	Maximum Line Pull		Normal Line Speed		High Line Speed		Layer		Total	
	lb	kg	ft/min	m/min	ft/min	m/min	ft	m	ft	m
1	28,280	12 828	181	55.2	334	101.8	162	49.4	162	49.4
2	26,250	11 907	195	59.4	371	113.1	179	54.5	341	103.9
3	24,500	11 113	209	63.7	397	121	197	60.0	538	164
4	22,960	10 414	223	67.9	424	129.2	214	65.2	753	229.5
5	21,610	9 802	237	72.2	450	137.2	232	70.7	985	300.2

Wire Rope Application		Diameter	Type	Maximum Permissible Load	
		in		lb	kg
Main (Front) Winch	Standard	1.02	37x7 rotation resistant – non-rotating, galvanized, right lang lay (Type KC)	21,625	9 808.9
	Optional	.88	34x7 rotation-resistant – right regular lay or right lang lay (Type YB)	21,920	9 942.7
Auxiliary (Rear) Winch	Standard	1.02	37x7 rotation resistant – non-rotating, galvanized, right lang lay (Type KC)	21,625	9 808.9
	Optional	.88	34x7 rotation-resistant – right regular lay or right lang lay (Type YB)	21,920	9 942.7

Boom Extend Modes



EM 1	Boom Length		Telescope Length				
	(ft)	(m)	T5	T4	T3	T2	T1
	42.7	13.01					
71.9	21.91	100%					
101.9	31.06	100%	100%				
132.8	40.48	100%	100%	100%			
164.6	50.17	100%	100%	100%	100%		
181.0	55.17	100%	100%	100%	100%	50%	
197.3	60.13	100%	100%	100%	100%	100%	

EM 2	Boom Length		Telescope Length				
	(ft)	(m)	T5	T4	T3	T2	T1
	42.7	13.01					
57.3	17.46	50%					
87.4	26.64	50%	100%				
118.3	36.06	50%	100%	100%			
150.1	45.75	50%	100%	100%	100%		
166.4	50.72	50%	100%	100%	100%	50%	
182.7	55.68	50%	100%	100%	100%	100%	

EM 3	Boom Length		Telescope Length				
	(ft)	(m)	T5	T4	T3	T2	T1
	42.7	13.01					
71.9	21.91	100%					
86.9	26.49	100%	50%				
102.4	31.21	100%	50%	50%			
118.3	36.06	100%	50%	50%	50%		
134.6	41.02	100%	50%	50%	50%	50%	
150.9	45.99	100%	50%	50%	50%	100%	

EM 4	Boom Length		Telescope Length				
	(ft)	(m)	T5	T4	T3	T2	T1
	42.7	13.01					
71.9	21.91	100%					
86.9	26.49	100%	50%				
102.4	31.21	100%	50%	50%			
118.3	36.06	100%	50%	50%	50%		
134.6	41.02	100%	50%	50%	50%	50%	
150.9	45.99	100%	50%	50%	50%	100%	

EM 5	Boom Length		Telescope Length				
	(ft)	(m)	T5	T4	T3	T2	T1
	42.7	13.01					
57.3	17.46	50%					
72.3	22.04	50%	50%				
87.8	26.76	50%	50%	50%			
103.7	31.61	50%	50%	50%	50%		
120.0	36.57	50%	50%	50%	50%	50%	
136.3	41.54	50%	50%	50%	50%	100%	

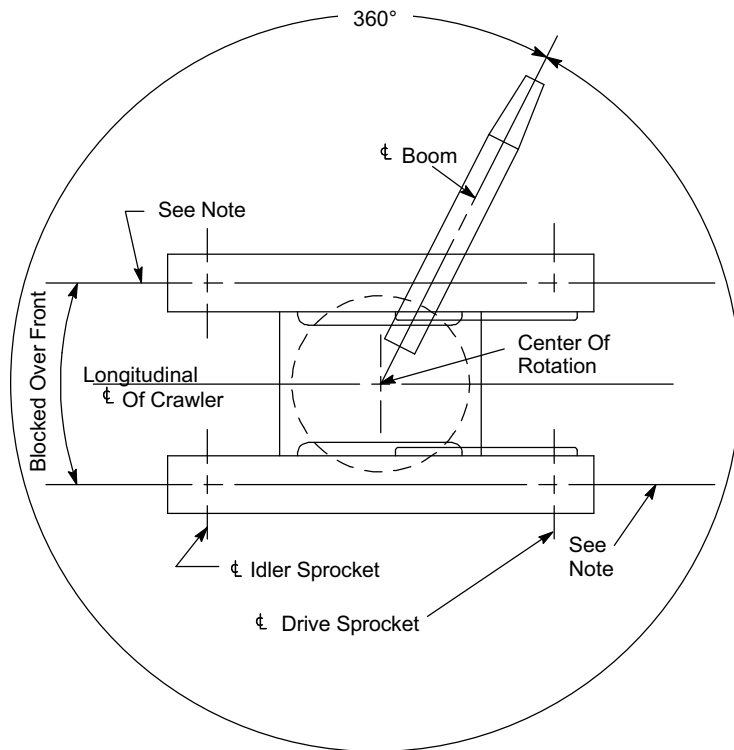
EM 6	Boom Length		Telescope Length				
	(ft)	(m)	T5	T4	T3	T2	T1
	42.7	13.01					
57.8	17.62	0%	50%				
73.2	22.31	0%	50%	50%			
89.1	27.16	0%	50%	50%	50%		
105.4	32.12	0%	50%	50%	50%	50%	
121.8	37.12	0%	50%	50%	50%	100%	

EM 7	Boom Length		Telescope Length				
	(ft)	(m)	T5	T4	T3	T2	T1
	42.7	13.01					
58.2	17.74	0%	0%	50%			
74.1	22.58	0%	0%	50%	50%		
90.4	27.55	0%	0%	50%	50%	50%	
106.7	32.52	0%	0%	50%	50%	100%	

Boom Mode Performance – Imperial

ABCD+A Counterweight															
Radius (ft)	EM1	EM2	EM3	EM4	EM5	EM6	EM7	Radius (ft)	EM1	EM2	EM3	EM4	EM5	EM6	EM7
57.3 – 58.2								132.9 – 136.3							
15								30							
30								45							
45								60							
71.9 – 74.1								149.6 – 150.9							
15								30							
30								45							
45								60							
60								75							
75								90							
86.9 – 90.4								164.6 – 166.4							
15								30							
30								45							
45								60							
60								75							
75								90							
101.9 – 106.7								181.0 – 182.7							
15								30							
30								45							
45								60							
60								75							
75								90							
90								105							
117.4 – 121.8															
30								105							
45								120							
60								135							
75								150							
90								165							
105															

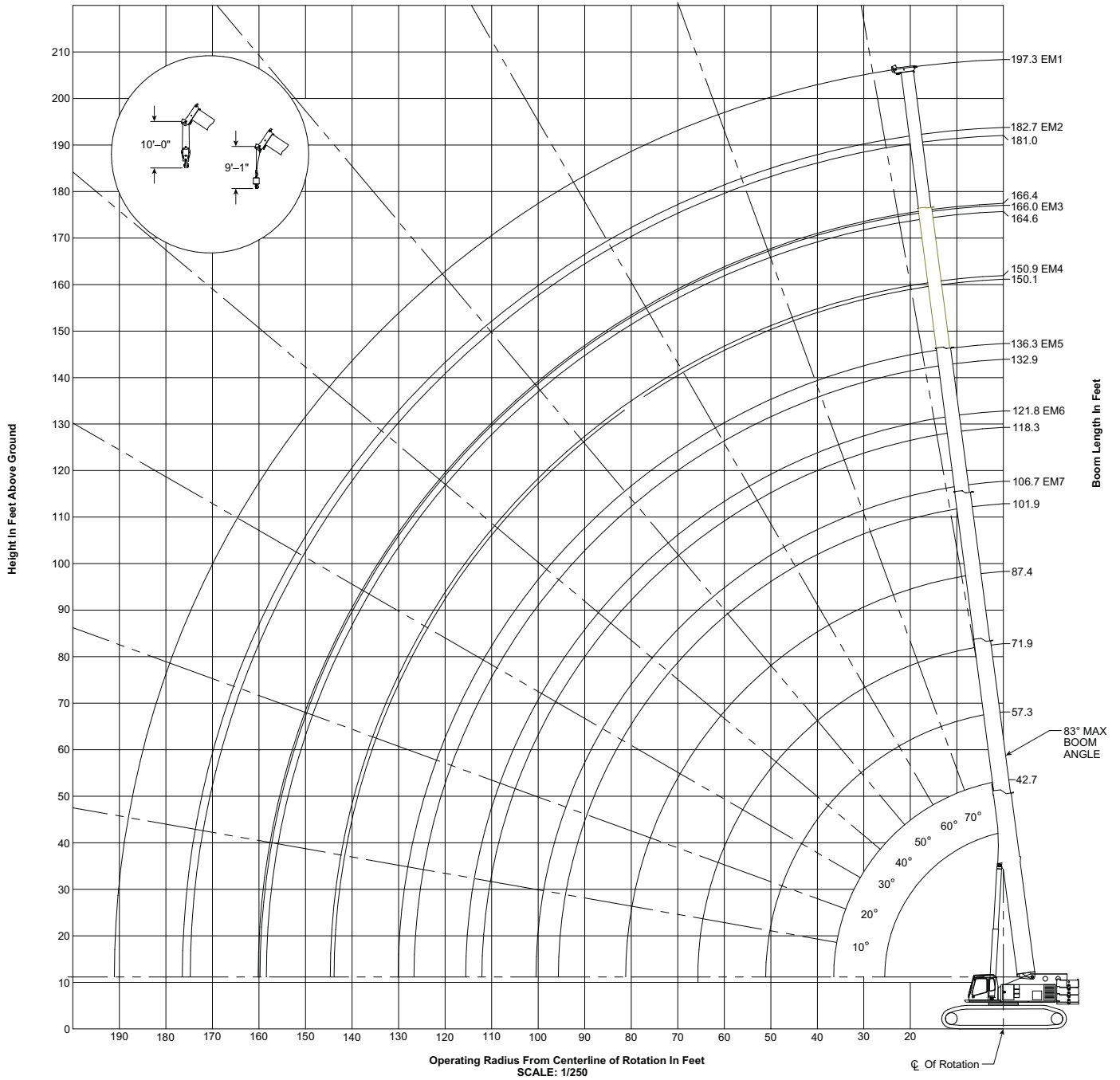
Working Areas



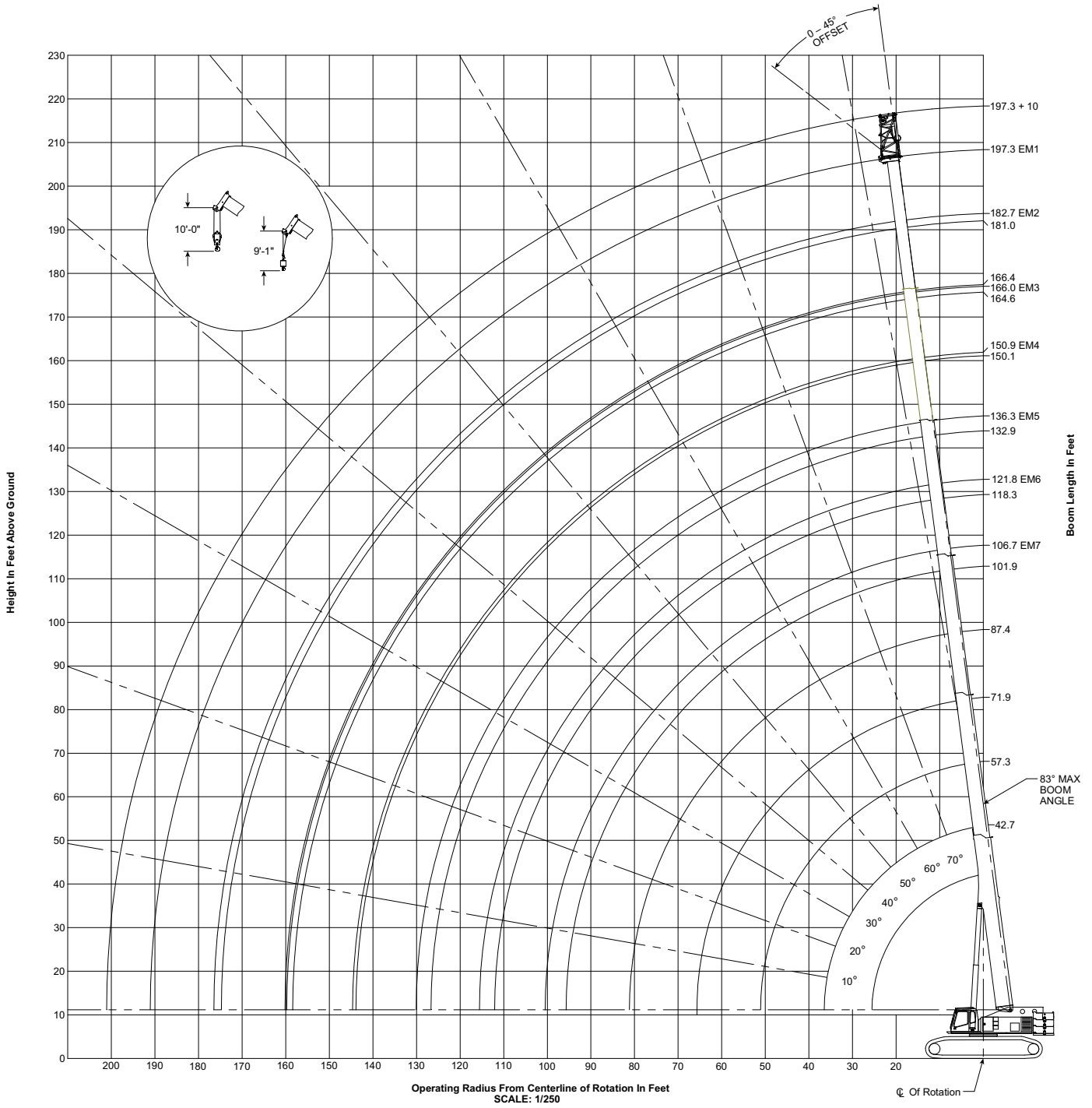
Note: These Lines Determine The Limiting Position Of Any Load For Operation Within Working Areas Indicated.

Working Range Diagrams – Imperial

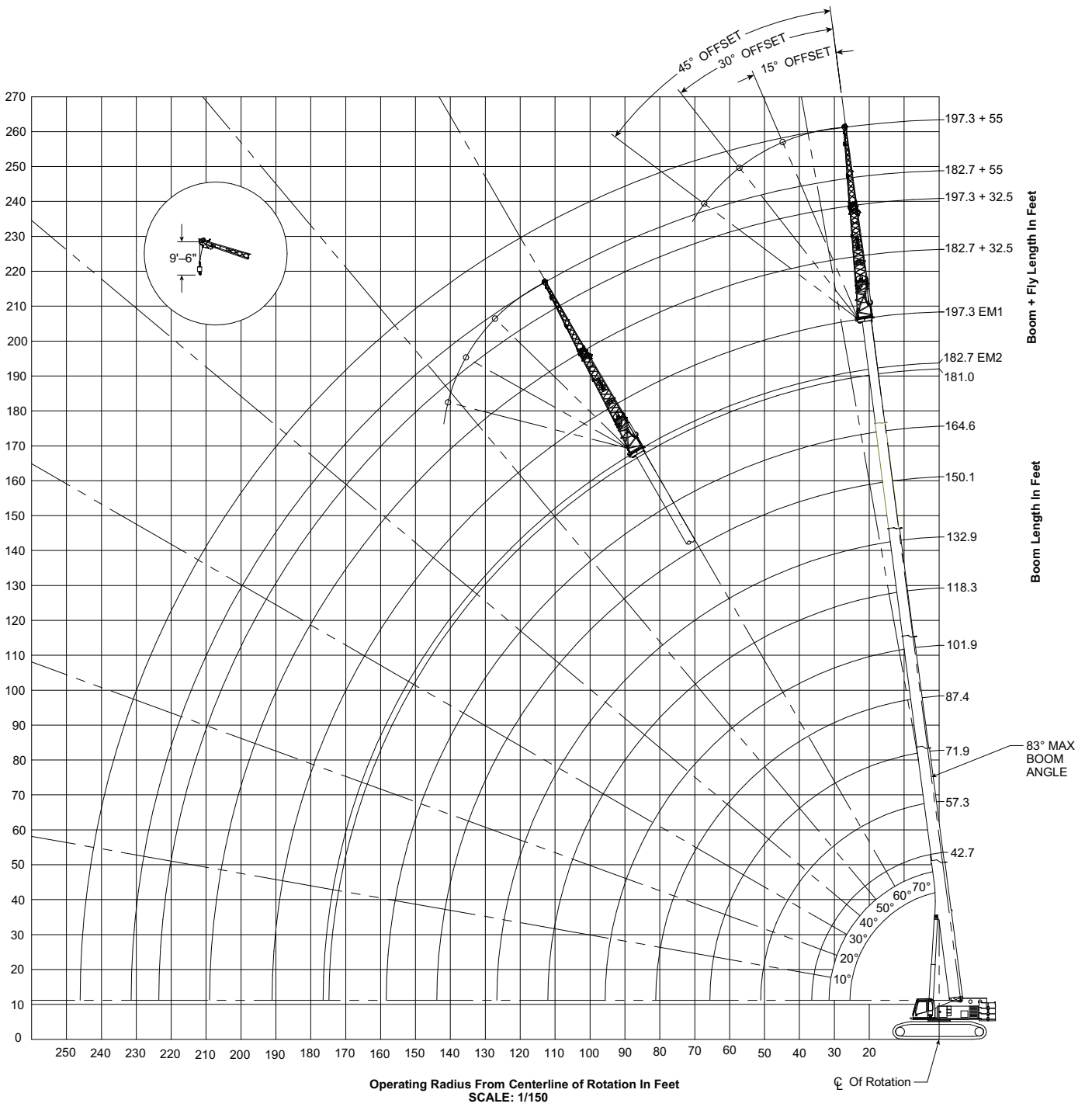
197.3' Main Boom



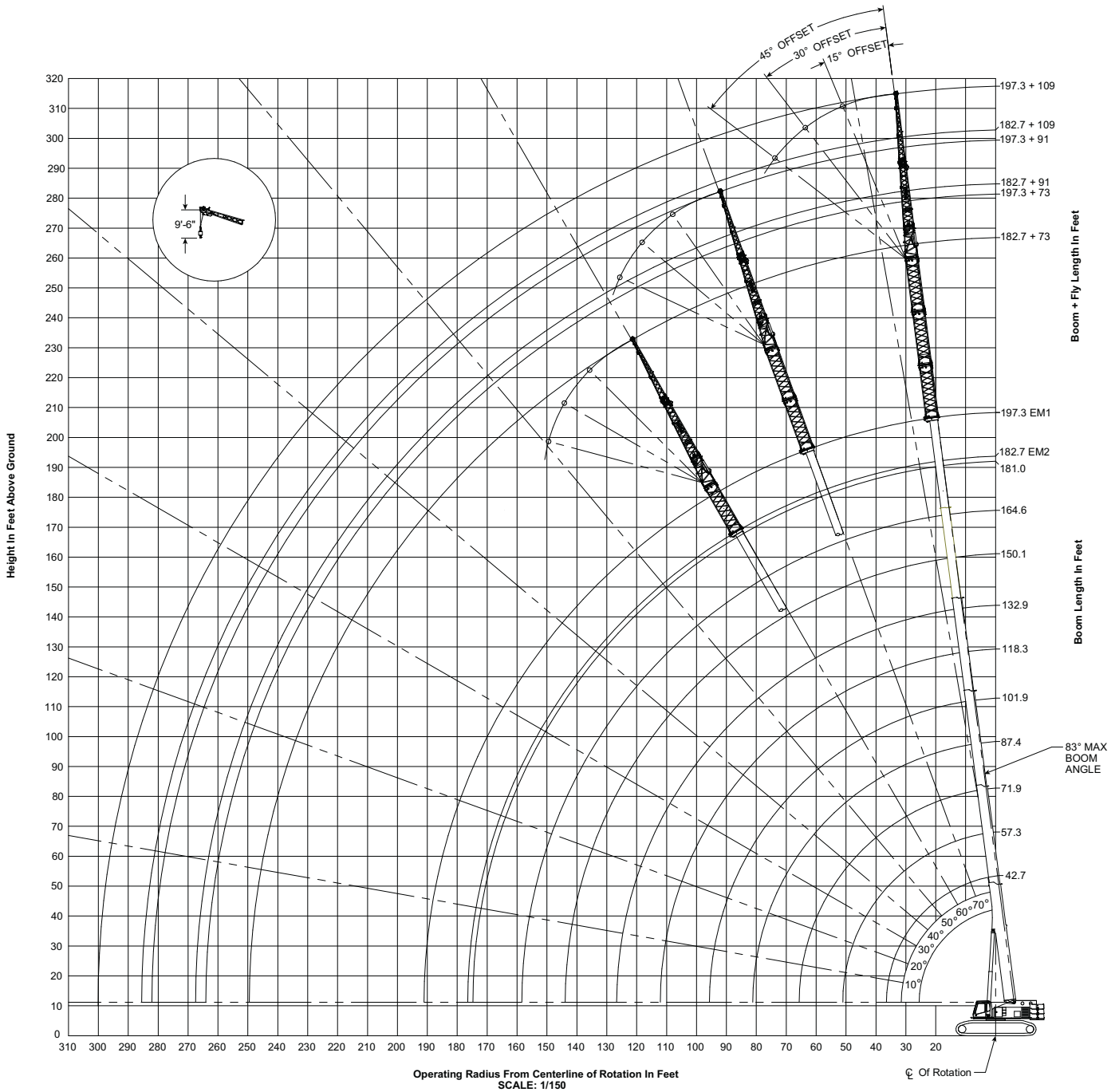
197.3' Main Boom + 10' SmartFly



197.3' Main Boom + 32.5'–55' SmartFly



197.3' Main Boom + 55' SmartFly + 54' Lattice Extensions



Main Boom Load Charts – Imperial

Main Boom Lift Capacity Chart – 360° Rotation Fully Extended Tracks 77,000 Upper Counterweight; 9,000 Lower Counterweight [All capacities are listed in Pounds]												
Radius (ft)	Boom Length (ft)											Radius (ft)
	42.7	57.3 – 58.2	71.9 – 74.1	86.9 – 90.4	101.9 – 106.7	117.4 – 121.8	132.9 – 136.3	149.6 – 150.9	164.6 – 166.4	181.0 – 182.7	197.3	
8.0	360,000*											8.0
9.0	343,300*											9.0
10.0	324,300*	182,000	181,900									10.0
12.0	274,000	182,000	181,600	169,900								12.0
15.0	219,600	182,000	178,100	168,400	116,500							15.0
20.0	163,000	166,400	158,000	142,300	116,500	86,100	63,700					20.0
25.0	127,800	131,300	130,500	122,700	111,400	82,400	63,700	48,200	36,200			25.0
30.0	103,800	107,600	108,600	106,000	98,400	82,400	63,700	48,200	36,200	29,600		30.0
35.0	84,200	88,300	89,700	87,200	87,700	82,400	62,100	48,200	36,200	29,600	23,800	35.0
40.0		71,700	73,000	75,100	71,800	73,200	56,100	48,200	36,200	29,600	23,800	40.0
45.0		60,600	61,900	63,000	62,700	61,500	50,900	48,200	36,200	29,600	23,800	45.0
50.0		51,500	53,400	53,900	53,600	52,500	45,800	44,600	36,200	29,600	23,800	50.0
55.0			46,300	46,800	46,400	45,500	41,700	40,700	36,000	29,600	23,800	55.0
60.0			40,700	41,200	40,900	39,900	38,500	37,000	33,300	29,400	23,800	60.0
65.0			36,000	36,500	36,200	35,300	35,800	33,800	31,000	27,000	23,800	65.0
70.0				32,600	32,300	31,400	32,400	31,100	29,000	24,900	23,800	70.0
75.0				29,300	29,000	28,200	29,100	28,300	27,200	23,000	22,500	75.0
80.0				26,500	26,100	26,500	26,300	25,500	25,200	21,400	21,100	80.0
85.0					23,700	24,700	23,800	23,000	23,300	19,900	19,600	85.0
90.0					21,500	22,600	21,600	21,100	21,400	18,600	18,200	90.0
95.0					19,700	20,800	19,900	20,000	19,700	17,400	17,000	95.0
100.0					14,100	19,100	18,200	18,700	18,000	16,300	15,900	100.0
105.0						17,600	16,700	17,200	16,500	15,200	14,900	105.0
110.0						16,200	15,300	15,800	15,100	14,100	14,000	110.0
115.0						11,300	14,400	14,600	13,900	13,200	13,100	115.0
120.0							13,800	13,500	12,800	12,100	12,300	120.0
125.0							13,200	12,500	11,800	11,100	11,600	125.0
130.0							9,400	11,500	10,800	10,200	10,800	130.0
135.0								10,700	10,000	9,300	10,000	135.0
140.0								9,900	9,200	8,500	9,200	140.0
145.0									8,400	7,900	8,400	145.0
150.0									7,800	7,500	7,700	150.0
155.0									7,200	7,000	7,100	155.0
160.0									6,500	6,600	6,500	160.0
165.0										6,200	6,000	165.0
170.0										5,800	5,400	170.0
175.0										4,400	5,000	175.0
180.0											4,500	180.0
185.0											4,100	185.0
190.0											3,700	190.0

*Over the front; special equipment required.

This material is supplied for reference use only. Operator must refer to in-cab Crane Rating Manual and Operator’s Manual to determine allowable crane lifting capacities, assembly, and operating procedures.

Main Boom Lift Capacity Chart – 360° Rotation Fully Retracted Tracks 77,000 Upper Counterweight; 9,000 Lower Counterweight [All capacities are listed in Pounds]												
Radius (ft)	Boom Length (ft)											Radius (ft)
	42.7	57.3 – 58.2	71.9 – 74.1	86.9 – 90.4	101.9 – 106.7	117.4 – 121.8	132.9 – 136.3	149.6 – 150.9	164.6 – 166.4	181.0 – 182.7	197.3	
20.0	143,100											20.0
25.0	99,600	103,700										25.0
30.0	74,700	79,500	81,500									30.0
35.0	58,600	63,200	65,000									35.0
40.0		51,800	53,600	54,100								40.0
45.0		43,300	45,100	45,600	45,300							45.0
50.0		36,900	38,700	39,200	38,900	40,000						50.0
55.0			34,100	34,000	33,700	34,800						55.0
60.0			29,900	29,800	30,800	30,600	29,700					60.0
65.0			26,500	26,300	27,500	27,100	26,200					65.0
70.0				23,400	24,600	24,100	24,300	23,700				70.0
75.0				21,300	22,100	21,800	22,100	21,200	20,700			75.0
80.0				19,800	20,000	19,800	20,100	19,300	18,600			80.0
85.0					18,100	17,900	18,200	17,400	16,700	17,300		85.0
90.0					16,500	16,600	17,000	15,700	15,000	15,600		90.0
95.0					15,000	15,500	15,500	14,200	13,600	14,100	13,600	95.0
100.0					8,400	14,200	14,200	12,900	12,600	12,800	12,200	100.0
105.0						13,000	13,000	11,700	11,700	11,600	11,000	105.0
110.0						12,000	11,900	10,700	10,900	10,600	10,000	110.0
115.0						6,400	11,000	9,700	10,100	9,600	9,000	115.0
120.0							10,100	8,800	9,400	8,700	8,100	120.0
125.0							9,300	8,000	8,600	7,900	7,300	125.0
130.0							5,200	7,300	7,800	7,200	6,600	130.0
135.0								6,600	7,200	6,500	5,900	135.0
140.0								6,000	6,500	5,800	5,300	140.0
145.0									6,000	5,300	4,700	145.0
150.0									5,400	4,700	4,200	150.0
155.0									4,900	4,200	3,600	155.0
160.0									3,200	3,800	3,200	160.0
165.0										3,300	2,700	165.0
170.0										2,900	2,300	170.0
175.0										1,400	2,000	175.0
180.0											1,600	180.0
185.0											1,300	185.0
190.0											1,000	190.0

*Over the front; special equipment required.

This material is supplied for reference use only. Operator must refer to in-cab Crane Rating Manual and Operator’s Manual to determine allowable crane lifting capacities, assembly, and operating procedures.

Fly Attachment Load Charts

Main Boom + 10ft Hydraulic Offset Fly Lift Capacity Chart – 360° Rotation Fully Extended Tracks 77,000lb Upper Counterweight; 9,000lb Lower Counterweight [All capacities are listed in Pounds]													
Boom Length (ft)													
Fly Offset													
Radius (ft)	42.7				57.3 – 58.2				71.9 – 74.1				Radius (ft)
	0°	15°	30°	45°	0°	15°	30°	45°	0°	15°	30°	45°	
10	86,100	86,100	73,400	61,900	86,000	86,000	76,000		85,900	85,900			10
12	86,100	86,100	70,600	60,500	86,000	86,000	73,700	61,800	85,900	85,900	75,000		12
15	86,100	80,600	66,900	58,600	86,000	86,000	70,400	60,200	85,900	85,900	72,300	61,100	15
20	86,100	72,700	64,000	56,000	86,000	79,600	65,800	57,900	85,900	83,600	68,200	59,100	20
25	81,100	66,600	59,700	54,100	86,000	73,600	64,200	56,000	85,900	78,200	64,800	57,400	25
30	73,300	63,900	56,400	52,100	85,300	68,600	60,800	54,500	85,900	73,600	64,000	55,900	30
35	67,100	59,900	54,100	51,000	78,500	64,800	58,000	52,900	85,900	69,600	61,300	54,700	35
40	64,600	57,100	52,800		72,500	63,200	55,800	51,600	73,000	66,100	58,900	53,300	40
45	59,300	55,100			61,000	60,200	54,100	50,900	61,200	61,800	56,900	52,100	45
50					52,100	52,500	52,800		52,300	52,700	53,100	51,200	50
55					45,100	45,400	45,600		45,300	45,700	46,000	46,200	55
60					39,600	39,800			40,800	40,100	40,300		60
65									36,400	36,600	36,400		65
70									32,600	32,700	30,300		70
75									29,400	28,300			75

Note: Capacities depict multiple boom modes and considers multiple fly offset angles.

This material is supplied for reference use only. Operator must refer to in-cab Crane Rating Manual and Operator’s Manual to determine allowable crane lifting capacities, assembly, and operating procedures.

Main Boom + 10ft Hydraulic Offset Fly Lift Capacity Chart – 360° Rotation Fully Extended Tracks 77,000lb Upper Counterweight; 9,000lb Lower Counterweight [All capacities are listed in Pounds]													
Boom Length (ft)													
Fly Offset													
Radius (ft)	86.9 – 90.4				101.9 – 106.7				117.4 – 121.8				Radius (ft)
	0°	15°	30°	45°	0°	15°	30°	45°	0°	15°	30°	45°	
10	85,800												10
12	85,800												12
15	85,800	85,800	72,900		85,700								15
20	85,800	85,300	69,500	59,800	85,700	83,800	69,200	59,800	69,200	69,500			20
25	85,800	80,700	66,500	58,300	85,700	80,300	66,600	58,500	69,200	69,500	65,400	58,100	25
30	85,800	76,600	64,800	56,900	85,700	76,500	64,800	57,300	69,200	69,500	64,800	57,200	30
35	85,800	73,000	63,500	55,700	85,700	73,600	64,400	56,300	65,600	65,900	63,200	56,300	35
40	72,300	69,800	61,300	54,700	70,900	70,900	62,200	55,300	65,600	65,900	61,600	55,100	40
45	61,600	61,200	59,300	53,400	59,600	60,000	60,400	54,100	60,400	61,000	60,100	54,100	45
50	53,500	53,500	52,600	52,100	52,700	52,700	51,900	51,900	51,400	52,000	52,500	52,900	50
55	46,400	46,800	47,100	45,900	45,700	46,100	46,500	46,800	44,500	44,900	45,400	45,700	55
60	40,900	41,300	41,500	41,700	40,200	40,600	40,900	41,200	39,000	39,500	39,800	40,100	60
65	36,300	36,600	36,800	37,000	35,600	36,000	36,200	36,400	34,400	34,800	35,200	35,400	65
70	32,400	32,700	32,900	31,400	31,800	32,100	32,300	32,500	30,600	30,900	31,200	31,500	70
75	29,200	29,400	29,500		28,500	28,800	29,000	29,100	27,400	27,700	27,900	28,100	75
80	26,400	26,600	26,700		25,700	26,000	26,100	26,300	24,600	24,900	25,100	25,200	80
85	24,000	24,100			23,300	23,500	23,700		22,200	22,400	22,600	22,800	85
90	21,900	20,400			21,300	21,400	21,500		20,200	20,400	20,600	20,700	90
95					19,400	19,600	19,700		18,800	18,500	18,700	17,100	95
100					17,800	17,900			17,700	17,400	17,200		100
105					16,300	16,400			16,700	16,500	16,300		105
110					11,400				15,700	15,600	15,500		110
115									14,500	14,500			115
120									13,400	11,700			120
125									8,900				125

This material is supplied for reference use only. Operator must refer to in-cab Crane Rating Manual and Operator’s Manual to determine allowable crane lifting capacities, assembly, and operating procedures.

Main Boom + 10ft Hydraulic Offset Fly Lift Capacity Chart – 360° Rotation Fully Extended Tracks 77,000lb Upper Counterweight; 9,000lb Lower Counterweight [All capacities are listed in Pounds]													
Boom Length (ft)													
Fly Offset													
Radius (ft)	132.9 – 136.3				149.6 – 150.9				164.6 – 166.4				Radius (ft)
	0°	15°	30°	45°	0°	15°	30°	45°	0°	15°	30°	45°	
20	51,600												20
25	51,600	52,200	53,800		38,300	38,900			29,600				25
30	51,600	52,200	53,800	56,300	38,300	38,900	40,700	43,200	29,600	30,100	27,300		30
35	51,600	52,200	53,800	55,600	38,300	38,900	40,700	43,200	29,600	30,100	31,500	33,700	35
40	51,600	52,200	53,500	53,000	38,300	38,900	40,700	43,200	29,600	30,100	31,500	33,700	40
45	48,500	48,000	47,600	47,200	38,300	38,900	40,700	40,000	29,600	30,100	31,500	33,700	45
50	43,300	43,200	43,200	42,900	38,300	38,900	38,600	36,900	29,600	30,100	31,500	31,500	50
55	39,500	39,200	38,900	38,700	38,300	37,400	35,600	34,300	29,600	30,100	30,000	29,100	55
60	35,700	35,500	35,300	35,200	34,800	34,600	33,100	31,900	29,600	28,700	27,700	26,900	60
65	32,400	32,300	32,200	32,100	31,600	31,500	30,900	29,900	27,600	26,600	25,700	25,000	65
70	29,600	29,500	29,400	29,400	28,800	28,700	28,700	28,000	25,500	24,600	23,900	23,300	70
75	26,900	26,800	27,000	27,000	26,400	26,400	26,300	26,300	23,700	23,000	22,300	21,800	75
80	25,100	24,300	24,300	24,500	24,300	24,300	24,200	24,200	22,100	21,600	21,300	20,900	80
85	22,900	22,800	22,300	22,000	22,000	22,300	22,400	22,400	21,100	20,500	20,000	19,600	85
90	21,000	21,200	21,200	21,200	20,100	20,400	20,600	20,800	19,800	19,200	18,800	18,500	90
95	19,100	19,300	19,500	19,600	18,300	18,500	18,700	18,800	18,600	18,100	17,700	17,500	95
100	17,400	17,600	17,800	17,900	16,600	16,800	17,000	17,100	17,000	17,100	16,800	16,500	100
105	15,900	16,100	16,200	16,300	15,100	15,300	15,500	15,600	15,500	15,700	15,900	15,700	105
110	14,600	14,800	14,900		14,100	14,000	14,100	14,200	14,200	14,300	14,500	14,600	110
115	13,400	13,500	13,600		13,300	13,100	13,000	12,900	12,900	13,100	13,200	13,300	115
120	12,300	12,400	12,500		12,600	12,400	12,300		11,800	12,000	12,100	12,200	120
125	11,300	11,400	9,900		11,600	11,700	11,700		10,800	11,000	11,100	11,200	125
130	10,400	10,500			10,700	10,800	10,900		9,900	10,000	10,100	10,200	130
135	9,600	9,600			9,900	9,900	10,000		9,100	9,200	9,300		135
140	7,300				9,100	9,200			8,300	8,400	8,500		140
145					8,400	8,400			7,600	7,700	7,700		145
150					7,700	7,800			6,900	7,000	7,000		150
155									6,300	6,300			155
160									5,700	5,800			160
165									5,200	5,200			165
170									4,100				170

This material is supplied for reference use only. Operator must refer to in-cab Crane Rating Manual and Operator’s Manual to determine allowable crane lifting capacities, assembly, and operating procedures.

Main Boom + 10ft Hydraulic Offset Fly Lift Capacity Chart – 360° Rotation Fully Extended Tracks 77,000lb Upper Counterweight; 9,000lb Lower Counterweight [All capacities are listed in Pounds]									
Boom Length (ft)									
Fly Offset									
Radius (ft)	181.0 – 182.7				197.3				Radius (ft)
	0°	15°	30°	45°	0°	15°	30°	45°	
30	24,300				18,700				30
35	24,300	24,800	25,900		18,700	19,100			35
40	24,300	24,800	25,900	27,700	18,700	19,100	19,300		40
45	24,300	24,800	25,900	27,700	18,700	19,100	19,300	22,200	45
50	24,300	24,800	25,900	27,700	18,700	19,100	19,300	22,200	50
55	24,300	24,800	25,900	27,700	18,700	19,100	19,300	22,200	55
60	24,300	24,800	25,900	26,200	18,700	19,100	19,300	22,200	60
65	24,300	24,400	24,200	24,000	18,700	19,100	19,300	22,200	65
70	22,600	22,400	22,200	22,000	18,700	19,100	19,300	19,800	70
75	21,000	20,800	20,700	20,600	18,700	19,100	19,300	19,800	75
80	19,300	19,200	19,100	19,000	18,700	18,900	18,800	18,700	80
85	17,800	17,700	17,600	17,600	17,500	17,400	17,300	17,300	85
90	16,500	16,400	16,300	16,300	16,100	16,100	16,000	16,000	90
95	15,300	15,200	15,200	15,100	14,900	14,900	14,800	14,800	95
100	14,100	14,100	14,100	14,000	13,800	13,800	13,700	13,700	100
105	13,100	13,100	13,100	13,100	12,800	12,800	12,800	12,700	105
110	12,200	12,200	12,200	12,200	11,900	11,900	11,800	11,800	110
115	11,300	11,300	11,300	11,300	11,000	11,000	11,000	11,000	115
120	10,400	10,500	10,600	10,600	10,200	10,200	10,200	10,200	120
125	9,600	9,700	9,700	9,800	9,500	9,500	9,500	9,500	125
130	8,800	8,900	9,000	9,000	8,800	8,800	8,900	8,900	130
135	8,100	8,200	8,200	8,300	8,200	8,200	8,200	8,300	135
140	7,400	7,500	7,600	7,600	7,600	7,600	7,700	7,700	140
145	6,800	6,900	6,900		7,000	7,000	7,100	7,100	145
150	6,100	6,300	6,300		6,400	6,500	6,500	6,600	150
155	5,500	5,600	5,700		5,800	5,900	6,000	6,000	155
160	5,000	5,000	5,100		5,300	5,400	5,500		160
165	4,400	4,500	4,600		4,800	4,900	5,000		165
170	3,900	4,000			4,400	4,500	4,500		170
175	3,500	3,500			3,900	4,000	4,100		175
180	3,200	3,200			3,500	3,600	3,600		180
185					3,100	3,100			185
190					2,700	2,700			190
195					2,300	2,400			195

This material is supplied for reference use only. Operator must refer to in-cab Crane Rating Manual and Operator’s Manual to determine allowable crane lifting capacities, assembly, and operating procedures.

Main Boom & Hydraulic Offset Fly Lift Capacity Chart – 360° Rotation Fully Extended Tracks 77,000lb Upper Counterweight; 9,000lb Lower Counterweight [All capacities are listed in Pounds]									
Load Radius ft	197.3 ft Boom Length								Load Radius ft
	32.5 ft Fly				55 ft Fly				
	Fly Offset				Fly Offset				
	0°	15°	30°	45°	0°	15°	30°	45°	
35.0	13,300								35.0
40.0	13,300				9,600				40.0
45.0	13,300				9,600				45.0
50.0	13,300	13,700			9,600				50.0
55.0	13,300	13,700			9,600				55.0
60.0	13,300	13,700	15,100		9,600	10,000			60.0
65.0	13,300	13,700	15,100	16,000	9,600	10,000			65.0
70.0	13,300	13,700	15,100	16,000	9,600	10,000			70.0
75.0	13,300	13,700	15,100	16,000	9,600	10,000	9,500		75.0
80.0	13,300	13,700	15,100	16,000	9,600	10,000	9,400		80.0
85.0	13,300	13,700	15,100	15,400	9,600	10,000	9,300	8,300	85.0
90.0	13,300	13,700	14,600	14,600	9,600	10,000	9,100	8,200	90.0
95.0	13,300	13,600	13,600	13,600	9,600	10,000	9,000	8,100	95.0
100.0	12,600	12,600	12,600	12,600	9,600	10,000	8,900	8,000	100.0
105.0	11,600	11,700	11,700	11,700	9,600	10,000	8,800	8,000	105.0
110.0	10,800	10,800	10,900	10,900	9,600	9,900	8,700	7,900	110.0
115.0	10,000	10,100	10,100	10,200	9,500	9,700	8,600	7,900	115.0
120.0	9,200	9,300	9,400	9,500	8,800	9,000	8,500	7,800	120.0
125.0	8,500	8,700	8,700	8,800	8,200	8,400	8,400	7,800	125.0
130.0	7,900	8,000	8,100	8,200	7,600	7,800	8,000	7,700	130.0
135.0	7,300	7,500	7,600	7,600	7,000	7,300	7,500	7,600	135.0
140.0	6,800	6,900	7,000	7,100	6,500	6,700	6,900	7,100	140.0
145.0	6,300	6,400	6,500	6,600	6,000	6,300	6,500	6,600	145.0
150.0	5,800	5,900	6,000	6,100	5,500	5,800	6,000	6,100	150.0
155.0	5,300	5,500	5,600	5,600	5,100	5,400	5,600	5,700	155.0
160.0	4,900	5,100	5,200	5,200	4,700	5,000	5,200	5,300	160.0
165.0	4,500	4,700	4,700	4,800	4,300	4,600	4,800	4,900	165.0
170.0	4,100	4,300	4,400	4,400	4,000	4,200	4,400	4,500	170.0
175.0	3,700	3,900	4,000	4,000	3,600	3,900	4,100	4,200	175.0
180.0	3,300	3,500	3,600	3,700	3,300	3,600	3,700	3,800	180.0
185.0	2,900	3,100	3,200		3,000	3,200	3,400	3,500	185.0
190.0	2,600	2,700	2,900		2,700	2,900	3,100	3,200	190.0
195.0	2,200	2,400	2,500		2,400	2,700	2,800	2,900	195.0
200.0	1,900	2,100	2,100		2,100	2,400	2,500	2,600	200.0
205.0	1,600	1,800	1,800		1,800	2,100	2,300		205.0
210.0	1,400	1,500			1,500	1,800	2,000		210.0
215.0	1,100	1,200			1,300	1,500	1,600		215.0
220.0						1,200	1,300		220.0
225.0							1,100		225.0

This material is supplied for reference use only. Operator must refer to in-cab Crane Rating Manual and Operator’s Manual to determine allowable crane lifting capacities, assembly, and operating procedures.

Main Boom & Hydraulic Offset Fly Lift Capacity Chart – 360° Rotation Fully Extended Tracks 77,000lb Upper Counterweight; 9,000lb Lower Counterweight [All capacities are listed in Pounds]									
Load Radius ft	197.3 ft Boom Length								Load Radius ft
	73 ft Fly + Extensions				91 ft Fly + Extensions				
	Fly Offset				Fly Offset				
	0°	15°	30°	45°	0°	15°	30°	45°	
45.0	7,200				5,400				45.0
50.0	7,200				5,400				50.0
55.0	7,200				5,400				55.0
60.0	7,200				5,400	5,600			60.0
65.0	7,200	7,500			5,400	5,600			65.0
70.0	7,200	7,500			5,400	5,600			70.0
75.0	7,200	7,500			5,400	5,600			75.0
80.0	7,200	7,500	7,700		5,400	5,600	6,100		80.0
85.0	7,200	7,500	7,500		5,400	5,600	5,900		85.0
90.0	7,200	7,500	7,400	6,800	5,400	5,600	5,800	5,500	90.0
95.0	7,200	7,500	7,200	6,700	5,400	5,600	5,600	5,400	95.0
100.0	7,200	7,500	7,000	6,600	5,400	5,600	5,500	5,300	100.0
105.0	7,200	7,500	6,900	6,400	5,400	5,600	5,400	5,100	105.0
110.0	7,200	7,500	6,800	6,300	5,400	5,600	5,200	5,000	110.0
115.0	7,200	7,300	6,600	6,200	5,400	5,500	5,100	4,900	115.0
120.0	7,200	7,200	6,500	6,100	5,400	5,300	5,000	4,800	120.0
125.0	7,200	7,000	6,400	6,000	5,400	5,200	4,800	4,600	125.0
130.0	6,800	6,900	6,200	5,900	5,400	5,100	4,700	4,500	130.0
135.0	6,300	6,600	6,100	5,800	5,100	4,900	4,600	4,400	135.0
140.0	5,800	6,100	6,000	5,700	4,600	4,800	4,500	4,300	140.0
145.0	5,300	5,600	5,900	5,600	4,200	4,500	4,400	4,200	145.0
150.0	4,800	5,200	5,400	5,500	3,800	4,100	4,300	4,100	150.0
155.0	4,400	4,700	5,000	5,200	3,400	3,700	4,000	4,000	155.0
160.0	4,000	4,300	4,600	4,800	3,000	3,400	3,700	3,900	160.0
165.0	3,700	4,000	4,200	4,400	2,700	3,000	3,300	3,500	165.0
170.0	3,300	3,600	3,800	4,000	2,400	2,700	3,000	3,200	170.0
175.0	3,000	3,300	3,500	3,600	2,100	2,400	2,600	2,800	175.0
180.0	2,700	3,000	3,200	3,300	1,800	2,100	2,300	2,500	180.0
185.0	2,400	2,700	2,900	3,000	1,500	1,800	2,100	2,200	185.0
190.0	2,100	2,400	2,600	2,700	1,200	1,500	1,800	1,900	190.0
195.0	1,800	2,100	2,300	2,400		1,300	1,500	1,600	195.0
200.0	1,600	1,800	2,000	2,100			1,300	1,400	200.0
205.0	1,400	1,600	1,800	1,800				1,100	205.0
210.0	1,100	1,400	1,500	1,600					210.0
215.0		1,100	1,300	1,300					215.0

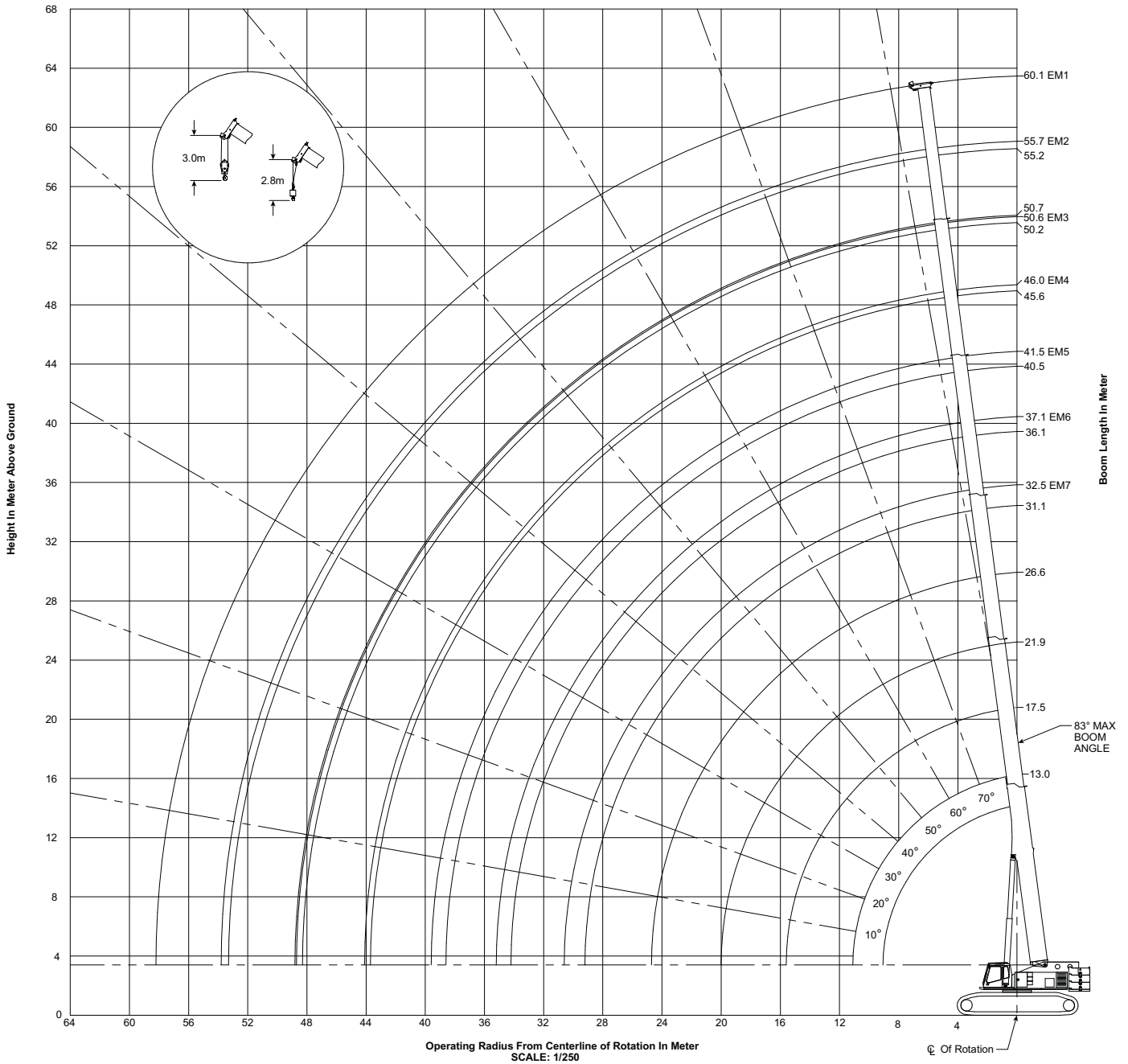
This material is supplied for reference use only. Operator must refer to in-cab Crane Rating Manual and Operator's Manual to determine allowable crane lifting capacities, assembly, and operating procedures.

Main Boom & Hydraulic Offset Fly Lift Capacity Chart – 360° Rotation Fully Extended Tracks 77,000lb Upper Counterweight; 9,000lb Lower Counterweight [All capacities are listed in Pounds]					
Load Radius ft	197.3 Boom Length				Load Radius ft
	109 ft Offset Fly + Extensions				
	0°	15°	30°	45°	
55.0	3,900				55.0
60.0	3,900				60.0
65.0	3,900				65.0
70.0	3,900	4,100			70.0
75.0	3,900	4,100			75.0
80.0	3,900	4,100			80.0
85.0	3,900	4,100	4,700		85.0
90.0	3,900	4,100	4,700		90.0
95.0	3,900	4,100	4,700		95.0
100.0	3,900	4,100	4,500	4,500	100.0
105.0	3,900	4,100	4,400	4,300	105.0
110.0	3,900	4,100	4,300	4,200	110.0
115.0	3,900	4,100	4,100	4,000	115.0
120.0	3,900	4,100	4,000	3,900	120.0
125.0	3,900	4,100	3,900	3,800	125.0
130.0	3,900	4,000	3,800	3,700	130.0
135.0	3,900	3,800	3,600	3,600	135.0
140.0	3,900	3,700	3,500	3,400	140.0
145.0	3,900	3,600	3,400	3,300	145.0
150.0	3,500	3,500	3,300	3,200	150.0
155.0	3,100	3,400	3,200	3,100	155.0
160.0	2,700	3,200	3,100	3,000	160.0
165.0	2,400	2,800	3,000	2,900	165.0
170.0	2,100	2,500	2,800	2,800	170.0
175.0	1,700	2,100	2,500	2,700	175.0
180.0	1,400	1,800	2,100	2,300	180.0
185.0	1,200	1,500	1,800	2,000	185.0
190.0		1,300	1,500	1,700	190.0
195.0			1,300	1,400	195.0
200.0				1,200	200.0

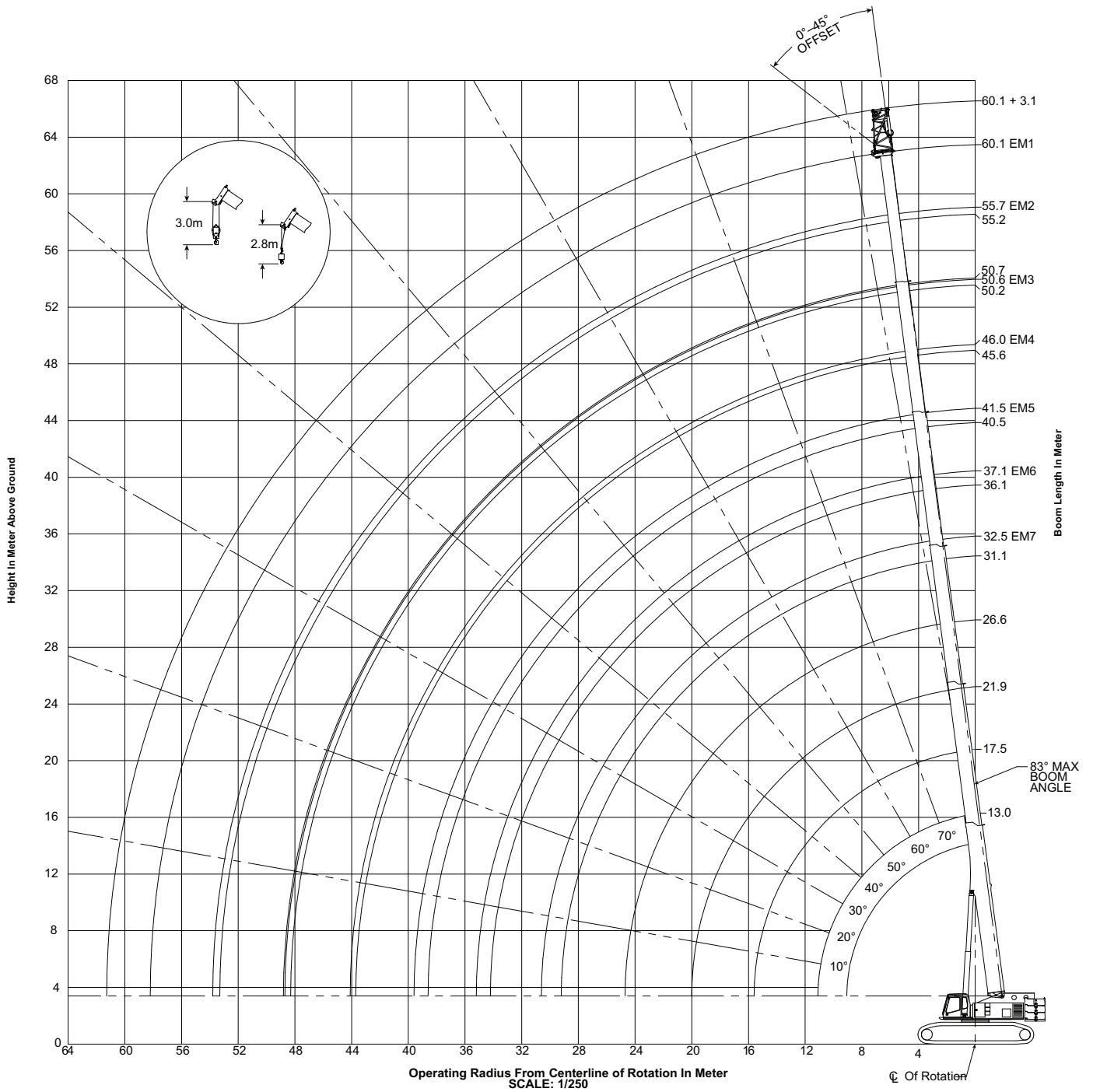
This material is supplied for reference use only. Operator must refer to in-cab Crane Rating Manual and Operator’s Manual to determine allowable crane lifting capacities, assembly, and operating procedures.

Working Range Diagrams – Metric

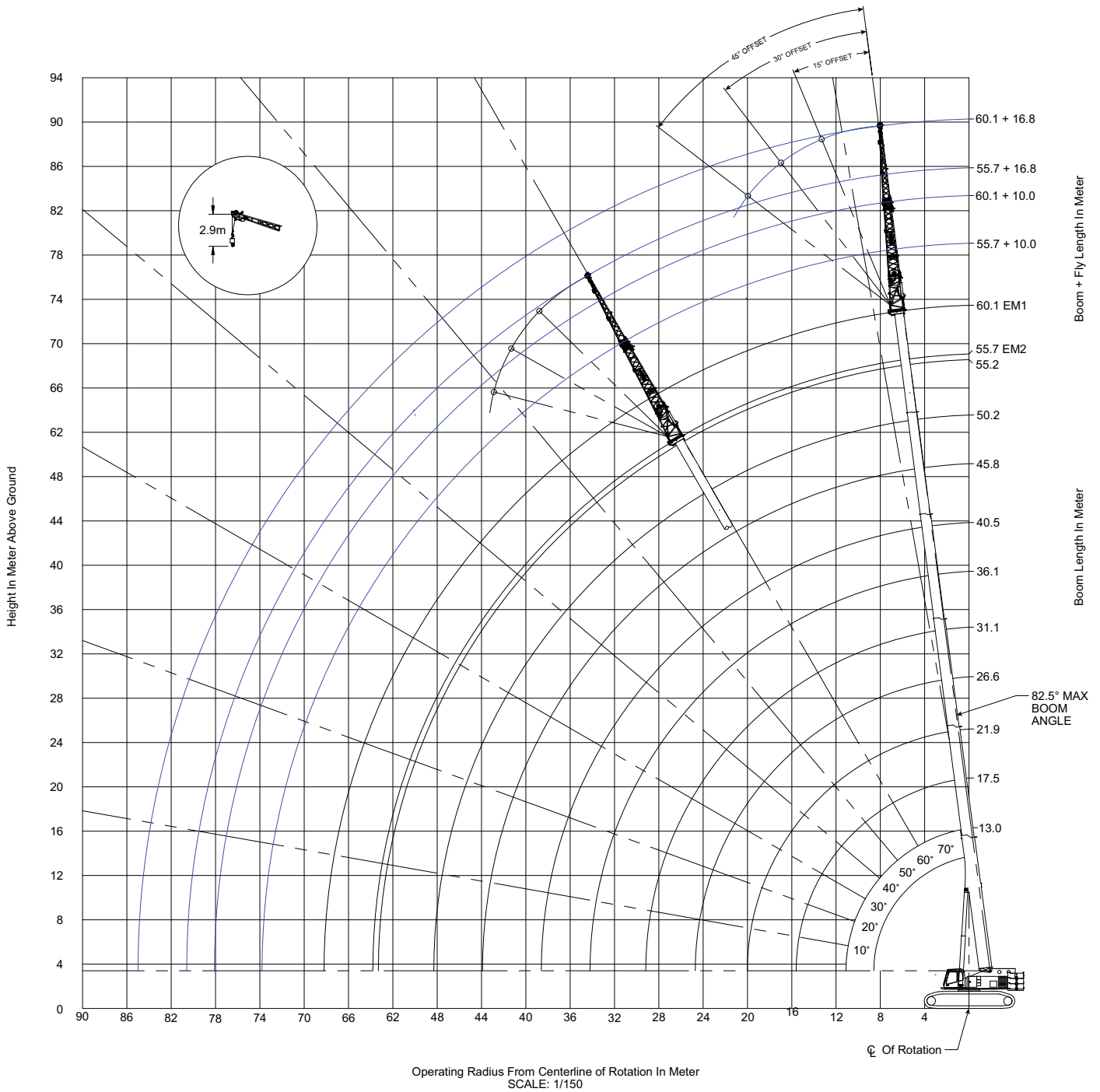
60.1m Main Boom



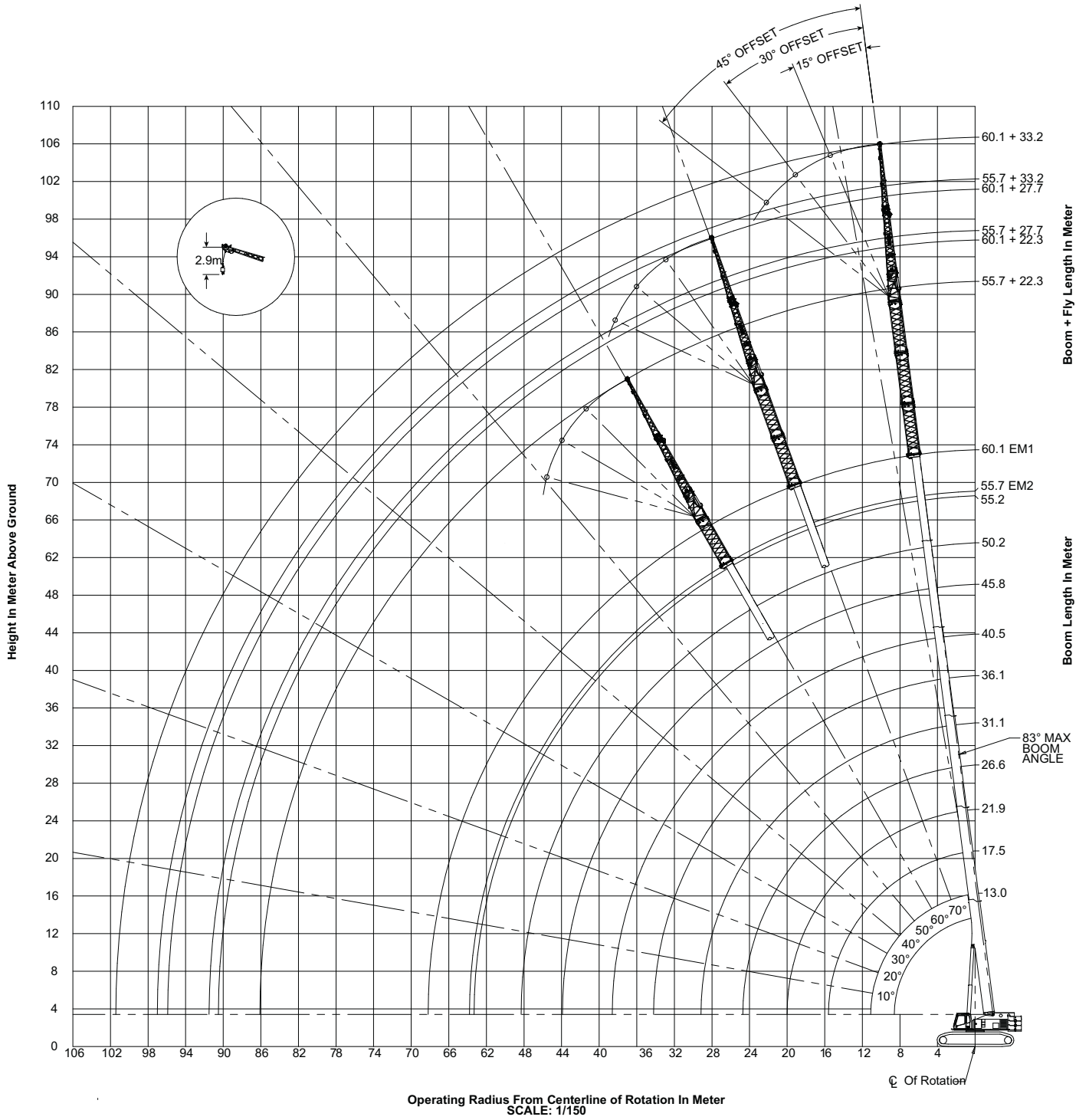
60.1m Main Boom + 3.1m SmartFly



60.1m Main Boom + 9.9m + 16.8m SmartFly



60.1m Main Boom + 16.8m SmartFly + 16.5m Lattice Extensions



Boom Mode Performance – Metric

ABCD+A Counterweight							
Rad (m)	EM1	EM2	EM3	EM4	EM5	EM6	EM7
17.5 – 17.7							
4							
10							
14							
21.9 – 22.6							
4							
10							
14							
18							
26.5 – 27.6							
4							
10							
14							
18							
22							
31.1 – 32.1 – 32.5							
5							
10							
14							
18							
22							
26							
35.8 – 37.1							
10							
14							
18							
22							
26							
32							
40.5 – 41.6							
10							
14							
18							
22							
26							
30							
34							

Rad (m)	EM1	EM2	EM3	EM4	EM5	EM6	EM7
45.6 – 46.0							
10							
14							
18							
22							
26							
30							
34							
38							
50.2 – 50.7							
10							
14							
18							
22							
26							
30							
34							
38							
42							
55.2 – 55.7							
10							
14							
18							
22							
26							
30							
34							
38							
42							
46							

Main Boom Load Charts – Metric

Main Boom Lift Capacity Chart – 360° Rotation Fully Extended Tracks 35mt Upper Counterweight; 4mt Lower Counterweight [All capacities are listed in kg]												
Radius (m)	Boom Length (m)											Radius (m)
	13.0	17.5 – 17.7	21.9 – 22.6	26.5 – 27.6	31.1 – 32.5	35.8 – 37.1	40.5 – 41.6	45.6 – 46.0	50.2 – 50.7	55.2 – 55.7	60.1	
2.5	160 00*											2.5
3.0	148 35*	82,550	82,500									3.0
3.5	129,60	82,550	82,500	71,900								3.5
4.0	113,850	82,550	80,750	77,200								4.0
4.5	101,20	82,550	80,750	77,050	52,800							4.5
5.0	90,950	82,550	80,000	72,650	52,800	37,350						5.0
6.0	75,200	76,700	72,350	65,200	52,800	39,050	26,850					6.0
7.0	63,650	65,250	64,850	58,900	52,800	38,800	28,950	21,850				7.0
8.0	54,850	56,550	56,200	53,800	49,000	37,350	28,950	21,850	16,400			8.0
9.0	47,950	49,650	49,850	48,900	45,150	37,350	28,950	21,850	16,400	13,400		9.0
10.0	42,350	44,100	44,600	43,400	41,750	37,350	28,950	21,850	16,400	13,400	10,800	10.0
12.0		33,300	33,900	34,600	33,400	34,050	25,750	21,850	16,400	13,400	10,800	12.0
14.0		26,600	27,500	27,750	27,600	27,050	22,650	21,850	16,400	13,400	10,800	14.0
16.0			22,500	22,750	22,600	22,100	19,750	19,400	16,400	13,400	10,800	16.0
18.0			18,900	19,100	19,000	18,550	17,700	17,100	15,350	13,400	10,800	18.0
20.0			16,100	16,300	16,150	15,750	16,100	15,200	13,950	12,100	10,800	20.0
22.0				14,100	13,950	13,550	14,000	13,600	12,750	10,900	10,650	22.0
24.0				12,300	12,150	12,200	12,200	11,850	11,650	9,850	9,750	24.0
26.0					10,700	11,150	10,700	10,400	10,550	9,000	8,850	26.0
28.0					9,450	9,900	9,550	9,350	9,500	8,200	8,050	28.0
30.0					7,400	8,900	8,500	8,700	8,400	7,550	7,350	30.0
32.0						8,000	7,550	7,800	7,500	6,900	6,750	32.0
34.0						7,200	6,800	7,000	6,700	6,250	6,200	34.0
36.0							6,350	6,300	6,000	5,700	5,750	36.0
38.0							6,000	5,700	5,350	5,050	5,300	38.0
40.0								5,150	4,800	4,500	4,800	40.0
42.0								4,650	4,300	4,000	4,300	42.0
44.0								3,650	3,850	3,650	3,850	44.0
46.0									3,450	3,350	3,450	46.0
48.0									3,100	3,100	3,100	48.0
50.0										2,850	2,750	50.0
52.0										2,600	2,450	52.0
54.0											2,150	54.0
56.0											1,900	56.0
58.0											1,700	58.0

*Over the front; special equipment required.

This material is supplied for reference use only. Operator must refer to in-cab Crane Rating Manual and Operator's Manual to determine allowable crane lifting capacities, assembly, and operating procedures.

Main Boom Lift Capacity Chart – 360° Rotation Fully Retracted Tracks 35mt Upper Counterweight; 4mt Lower Counterweight [All capacities are listed in kg]												
Radius (m)	Boom Length (m)											Radius (m)
	13.0	17.5 – 17.7	21.9 – 22.6	26.5 – 27.6	31.1 – 32.5	35.8 – 37.1	40.5 – 41.6	45.6 – 46.0	50.2 – 50.7	55.2 – 55.7	60.1	
5.0	90,950											5.0
6.0	66,650											6.0
7.0	51,750	53,700										7.0
8.0	41,800	44,050										8.0
9.0	34,750	36,900	37,800									9.0
10.0	29,450	31,550	32,400									10.0
12.0		24,050	24,900	25,100								12.0
14.0		19,050	19,850	20,050	19,950							14.0
16.0			16,350	16,550	16,400	16,900						16.0
18.0			13,900	13,850	14,150	14,200	13,800					18.0
20.0			11,850	11,750	12,300	12,100	11,750	11,950				20.0
22.0				10,100	10,600	10,450	10,650	10,250				22.0
24.0				9,150	9,300	9,200	9,350	8,950	8,650			24.0
26.0					8,150	8,050	8,200	7,850	7,500	7,800		26.0
28.0					7,200	7,350	7,450	6,850	6,550	6,800	6,550	28.0
30.0					4,750	6,600	6,600	6,050	5,850	6,000	5,750	30.0
32.0						5,900	5,900	5,300	5,300	5,250	5,000	32.0
34.0						4,950	5,250	4,700	4,850	4,650	4,400	34.0
36.0							4,750	4,150	4,400	4,100	3,850	36.0
38.0							4,250	3,650	3,900	3,600	3,350	38.0
40.0								3,200	3,450	3,150	2,900	40.0
42.0								2,850	3,100	2,750	2,500	42.0
44.0								1,950	2,750	2,400	2,150	44.0
46.0									2,400	2,100	1,850	46.0
48.0									2,150	1,800	1,550	48.0
50.0										1,550	1,300	50.0
52.0										1,300	1,050	52.0
54.0											800	54.0
56.0											600	56.0
58.0											450	58.0

*Over the front; special equipment required.

This material is supplied for reference use only. Operator must refer to in-cab Crane Rating Manual and Operator's Manual to determine allowable crane lifting capacities, assembly, and operating procedures.

Fly Attachment Load Charts – Metric

Main Boom & Hydraulic Offset Fly Lift Capacity Chart – 360° Rotation Fully Extended Tracks 35mt Upper Counterweight; 4mt Lower Counterweight [All capacities are listed in kg]													
3.1m Offset Fly													
Fly Offset													
Radius (m)	13.0				17.5 – 17.7				21.9 – 22.6				Radius (m)
	0°	15°	30°	45°	0°	15°	30°	45°	0°	15°	30°	45°	
3	39,050	39,050	33,400	28,150	39,000	39,000	34,550		38,950	38,950			3
4	39,050	39,050	32,350	27,600	39,000	39,000	33,700	28,150	38,950	38,950			4
4	39,050	38,150	31,350	27,100	39,000	39,000	32,850	27,750	38,950	38,950	33,550		4
5	39,050	36,750	30,450	26,650	39,000	39,000	32,050	27,400	38,950	38,950	32,850	27,750	5
5	39,050	35,450	29,600	26,250	39,000	38,400	31,300	27,000	38,950	38,950	32,250	27,450	5
6	39,050	33,200	29,150	25,500	39,000	36,300	29,950	26,350	38,950	38,050	31,050	26,850	6
7	38,500	31,250	27,800	24,850	39,000	34,400	29,400	25,750	38,950	36,400	30,000	26,350	7
8	35,800	29,600	26,650	24,300	39,000	32,800	28,700	25,200	38,950	34,900	29,400	25,850	8
9	33,500	29,200	25,700	23,700	39,000	31,350	27,700	24,750	38,950	33,550	29,150	25,400	9
10	31,550	27,900	24,950	23,300	36,850	30,050	26,850	24,300	38,950	32,300	28,300	25,050	10
12	29,400	26,050	24,000		33,300	28,850	25,400	23,450	33,900	30,150	26,850	24,250	12
14	26,200	24,800			26,850	27,000	24,400	23,050	26,900	27,150	25,650	23,550	14
16					21,950	22,100	22,200		22,050	22,200	22,400	22,500	16
18					18,400	18,500			18,800	18,600	18,750	18,200	18
20									16,250	16,350	16,400		20
22									14,100	14,150			22

This material is supplied for reference use only. Operator must refer to in-cab Crane Rating Manual and Operator's Manual to determine allowable crane lifting capacities, assembly, and operating procedures.

Main Boom & Hydraulic Offset Fly Lift Capacity Chart – 360° Rotation Fully Extended Tracks 35mt Upper Counterweight; 4mt Lower Counterweight [All capacities are listed in kg]													
3.1m Offset Fly													
Fly Offset													
Radius (m)	26.5 – 27.6				31.1 – 32.5				35.8 – 37.1				Radius (m)
	0°	15°	30°	45°	0°	15°	30°	45°	0°	15°	30°	45°	
3	38,900												3
4	38,900												4
4	38,900	38,900			38,850								4
5	38,900	38,900	33,150		38,850								5
5	38,900	38,900	32,600	27,650	38,850	38,850			29,650				5
6	38,900	38,800	31,600	27,150	38,850	38,100	31,450	27,100	31,350	31,550			6
7	38,900	37,400	30,700	26,700	38,850	37,050	30,700	26,750	31,350	31,550	30,000	26,450	7
8	38,900	36,100	29,850	26,250	38,850	36,050	29,950	26,400	31,350	31,550	29,450	26,250	8
9	38,900	34,900	29,400	25,850	38,850	34,850	29,400	26,050	31,350	31,550	29,400	25,950	9
10	38,900	33,800	29,300	25,500	38,850	33,950	29,400	25,750	29,800	29,850	29,300	25,700	10
12	33,550	31,800	27,900	24,900	33,000	32,300	28,300	25,150	29,650	29,850	28,050	25,100	12
14	27,450	26,900	26,550	24,150	26,500	26,350	26,600	24,450	26,550	26,850	27,100	24,450	14
16	22,550	22,750	22,450	22,300	22,250	22,450	22,450	22,200	21,650	21,900	22,100	22,250	16
18	19,000	19,150	19,300	19,400	18,700	18,850	19,000	19,150	18,150	18,350	18,500	18,650	18
20	16,250	16,350	16,450	16,550	15,900	16,050	16,200	16,300	15,400	15,550	15,700	15,800	20
22	14,050	14,150	14,200		13,750	13,850	13,950	14,050	13,200	13,350	13,500	13,550	22
24	12,250	12,350	12,400		11,950	12,100	12,150	12,200	11,450	11,550	11,700	11,750	24
26	10,800	10,850			10,500	10,600	10,650		10,000	10,100	10,200	10,250	26
28	8,900	8,050			9,300	9,400	9,450		8,900	8,950	9,000	9,050	28
30					8,300	8,350	6,750		8,200	8,050	7,950		30
32					7,400	7,450			7,600	7,450	7,400		32
34									6,900	6,950	5,400		34
36									6,250	6,300			36
38									4,050				38

This material is supplied for reference use only. Operator must refer to in-cab Crane Rating Manual and Operator's Manual to determine allowable crane lifting capacities, assembly, and operating procedures.

Main Boom & Hydraulic Offset Fly Lift Capacity Chart – 360° Rotation Fully Extended Tracks 35mt Upper Counterweight; 4mt Lower Counterweight [All capacities are listed in kg]													
3.1m Offset Fly													
Fly Offset													
Radius S (m)	40.5 – 41.6				45.6 – 46.0				50.2 – 50.7				Radius S (m)
	0°	15°	30°	45°	0°	15°	30°	45°	0°	15°	30°	45°	
6	23,400												6
7	23,400	23,600			17,400								7
8	23,400	23,600	24,450	23,750	17,400	17,650			13,400				8
9	23,400	23,600	24,450	25,600	17,400	17,650	18,450	18,200	13,400	13,650			9
10	23,400	23,600	24,450	25,350	17,400	17,650	18,450	19,600	13,400	13,650	14,300		10
12	23,400	23,600	24,450	24,400	17,400	17,650	18,450	19,600	13,400	13,650	14,300	15,350	12
14	21,550	21,300	21,100	20,950	17,400	17,650	18,450	17,850	13,400	13,650	14,300	15,300	14
16	18,850	18,700	18,600	18,500	17,400	17,650	16,800	16,150	13,400	13,650	14,200	13,700	16
18	16,500	16,400	16,300	16,250	16,050	15,950	15,200	14,650	13,400	13,250	12,750	12,400	18
20	14,550	14,500	14,400	14,400	14,150	14,100	13,900	13,450	12,400	11,950	11,550	11,250	20
22	12,800	12,900	12,850	12,800	12,600	12,550	12,500	12,400	11,200	10,850	10,500	10,250	22
24	11,600	11,200	11,300	11,400	11,250	11,250	11,200	11,200	10,200	9,900	9,800	9,600	24
26	10,350	10,300	10,050	9,900	9,900	10,050	10,100	10,100	9,500	9,250	9,050	8,850	26
28	9,200	9,300	9,350	9,400	8,800	8,900	9,000	9,050	8,750	8,500	8,350	8,200	28
30	8,150	8,250	8,300	8,350	7,750	7,850	7,950	8,000	7,950	7,900	7,750	7,600	30
32	7,250	7,300	7,350	7,400	6,850	6,950	7,000	7,050	7,000	7,100	7,200	7,100	32
34	6,450	6,500	6,550		6,250	6,200	6,200	6,250	6,250	6,300	6,400	6,450	34
36	5,750	5,800	5,850		5,800	5,750	5,700		5,550	5,600	5,700	5,700	36
38	5,150	5,200	4,500		5,300	5,350	5,300		4,950	5,000	5,050	5,100	38
40	4,600	4,650			4,750	4,800	4,850		4,400	4,450	4,500		40
42	4,150				4,250	4,300	4,350		3,900	3,950	4,000		42
44					3,850	3,850			3,450	3,500	3,550		44
46					3,450	2,950			3,050	3,100	3,150		46
48									2,700	2,750			48
50									2,400	2,400			50

This material is supplied for reference use only. Operator must refer to in-cab Crane Rating Manual and Operator’s Manual to determine allowable crane lifting capacities, assembly, and operating procedures.

Main Boom & Hydraulic Offset Fly Lift Capacity Chart – 360° Rotation Fully Extended Tracks 35mt Upper Counterweight; 4mt Lower Counterweight [All capacities are listed in kg]									
3.1m Offset Fly									
Fly Offset									
Radius (m)	55.2 – 55.7				60.1				Radius (m)
	0°	15°	30°	45°	0°	15°	30°	45°	
9	11,050								9
10	11,050	11,250			8,500				10
12	11,050	11,250	11,750	12,550	8,500	8,700	8,750		12
14	11,050	11,250	11,750	12,550	8,500	8,700	8,750	10,100	14
16	11,050	11,250	11,750	12,550	8,500	8,700	8,750	10,100	16
18	11,050	11,250	11,750	12,100	8,500	8,700	8,750	10,100	18
20	11,050	10,950	10,850	10,750	8,500	8,700	8,750	10,100	20
22	9,850	9,800	9,800	9,750	8,500	8,700	8,750	9,000	22
24	8,950	8,900	8,850	8,800	8,500	8,700	8,700	8,650	24
26	8,050	8,000	7,950	7,950	7,900	7,850	7,800	7,800	26
28	7,250	7,250	7,200	7,200	7,100	7,100	7,050	7,050	28
30	6,550	6,550	6,550	6,500	6,400	6,400	6,400	6,350	30
32	5,950	5,950	5,950	5,950	5,800	5,800	5,800	5,800	32
34	5,400	5,400	5,400	5,400	5,250	5,250	5,250	5,250	34
36	4,850	4,900	4,900	4,900	4,750	4,750	4,750	4,750	36
38	4,350	4,400	4,450	4,450	4,300	4,350	4,350	4,350	38
40	3,900	3,950	4,000	4,000	3,900	3,950	3,950	3,950	40
42	3,500	3,550	3,550	3,600	3,550	3,600	3,600	3,600	42
44	3,100	3,150	3,200	3,200	3,200	3,250	3,250	3,250	44
46	2,750	2,800	2,800		2,850	2,900	2,900	2,900	46
48	2,350	2,400	2,450		2,550	2,550	2,600		48
50	2,050	2,100	2,100		2,250	2,250	2,300		50
52	1,750	1,800			1,950	2,000	2,000		52
54	1,500	1,550			1,700	1,750	1,750		54
56	1,350				1,450	1,450			56
58					1,200	1,250			58

This material is supplied for reference use only. Operator must refer to in-cab Crane Rating Manual and Operator's Manual to determine allowable crane lifting capacities, assembly, and operating procedures.

Main Boom & Hydraulic Offset Fly Lift Capacity Chart – 360° Rotation Fully Extended Tracks 35mt Upper Counterweight; 4mt Lower Counterweight [All capacities are listed in kg]									
Radius (m)	60.1m Boom Length				16.8m Boom Length				Radius (m)
	9.9m Fly				16.8m Fly				
	Fly Offset				Fly Offset				
	0°	15°	30°	45°	0°	15°	30°	45°	
12.0	6,000				4,350				12.0
14.0	6,000	6,200			4,350				14.0
16.0	6,000	6,200			4,350				16.0
18.0	6,000	6,200	6,850		4,350	4,550			18.0
20.0	6,000	6,200	6,850	7,250	4,350	4,550			20.0
22.0	6,000	6,200	6,850	7,250	4,350	4,550	4,350		22.0
24.0	6,000	6,200	6,850	7,250	4,350	4,550	4,300		24.0
26.0	6,000	6,200	6,850	6,950	4,350	4,550	4,200	3,750	26.0
28.0	6,000	6,200	6,450	6,450	4,350	4,550	4,150	3,700	28.0
30.0	5,850	5,850	5,850	5,850	4,350	4,550	4,050	3,650	30.0
32.0	5,300	5,300	5,300	5,300	4,350	4,550	4,000	3,600	32.0
34.0	4,750	4,800	4,800	4,850	4,350	4,450	3,900	3,600	34.0
36.0	4,300	4,350	4,400	4,400	4,100	4,200	3,850	3,550	36.0
38.0	3,900	3,950	4,000	4,000	3,750	3,850	3,800	3,500	38.0
40.0	3,500	3,600	3,600	3,650	3,350	3,500	3,550	3,500	40.0
42.0	3,200	3,250	3,300	3,300	3,050	3,150	3,250	3,300	42.0
44.0	2,850	2,950	3,000	3,000	2,750	2,850	2,950	3,000	44.0
46.0	2,600	2,650	2,700	2,700	2,500	2,600	2,700	2,750	46.0
48.0	2,300	2,400	2,450	2,450	2,250	2,350	2,450	2,500	48.0
50.0	2,100	2,150	2,200	2,200	2,000	2,100	2,200	2,250	50.0
52.0	1,850	1,900	1,950	2,000	1,800	1,900	2,000	2,050	52.0
54.0	1,600	1,700	1,750	1,750	1,600	1,700	1,750	1,800	54.0
56.0	1,350	1,450	1,500		1,400	1,500	1,600	1,600	56.0
58.0	1,150	1,250	1,300		1,250	1,350	1,400	1,450	58.0
60.0	950	1,050	1,050		1,050	1,150	1,250	1,250	60.0
62.0	800	850	850		850	1,000	1,050		62.0
64.0	600	650			700	800	900		64.0
66.0		500			550	650	700		66.0
68.0						500	500		68.0

This material is supplied for reference use only. Operator must refer to in-cab Crane Rating Manual and Operator’s Manual to determine allowable crane lifting capacities, assembly, and operating procedures.

Main Boom & Hydraulic Offset Fly Lift Capacity Chart – 360° Rotation Fully Extended Tracks 35mt Upper Counterweight; 4mt Lower Counterweight [All capacities are listed in kg]									
Radius (m)	60.1m Boom Length				60.1m Boom Length				Radius (m)
	22.2m Fly + Extensions				27.7m Fly + Extensions				
	Fly Offset				Fly Offset				
	0°	15°	30°	45°	0°	15°	30°	45°	
14.0	3,250				2,450				14.0
16.0	3,250				2,450				16.0
18.0	3,250				2,450	2,550			18.0
20.0	3,250	3,400			2,450	2,550			20.0
22.0	3,250	3,400			2,450	2,550			22.0
24.0	3,250	3,400	3,500		2,450	2,550	2,750		24.0
26.0	3,250	3,400	3,400		2,450	2,550	2,650	2,550	26.0
28.0	3,250	3,400	3,300	3,050	2,450	2,550	2,600	2,450	28.0
30.0	3,250	3,400	3,200	3,000	2,450	2,550	2,500	2,400	30.0
32.0	3,250	3,400	3,150	2,900	2,450	2,550	2,400	2,300	32.0
34.0	3,250	3,350	3,050	2,850	2,450	2,500	2,350	2,250	34.0
36.0	3,250	3,300	2,950	2,800	2,450	2,450	2,250	2,150	36.0
38.0	3,250	3,200	2,900	2,700	2,450	2,350	2,200	2,100	38.0
40.0	3,000	3,100	2,800	2,650	2,400	2,250	2,100	2,000	40.0
42.0	2,700	2,850	2,750	2,600	2,100	2,200	2,050	1,950	42.0
44.0	2,400	2,550	2,700	2,550	1,850	2,000	1,950	1,900	44.0
46.0	2,150	2,300	2,400	2,500	1,600	1,800	1,900	1,850	46.0
48.0	1,900	2,050	2,150	2,250	1,400	1,550	1,700	1,800	48.0
50.0	1,700	1,850	1,950	2,000	1,200	1,350	1,500	1,550	50.0
52.0	1,500	1,600	1,700	1,800	1,000	1,150	1,300	1,350	52.0
54.0	1,300	1,400	1,500	1,600	850	1,000	1,100	1,150	54.0
56.0	1,100	1,250	1,350	1,400	650	800	900	1,000	56.0
58.0	950	1,050	1,150	1,200	500	650	750	800	58.0
60.0	800	900	1,000	1,050		500	600	650	60.0
62.0	650	750	850	850				500	62.0
64.0	500	600	700	700					64.0
66.0		500	550	550					66.0

This material is supplied for reference use only. Operator must refer to in-cab Crane Rating Manual and Operator's Manual to determine allowable crane lifting capacities, assembly, and operating procedures.

Main Boom & Hydraulic Offset Fly Lift Capacity Chart – 360° Rotation Fully Extended Tracks (Manual and Hydraulic) 35mt Upper Counterweight; 4mt Lower Counterweight [All capacities are listed in kg]					
Radius (m)	60.1m Boom Length				Radius (m)
	22.2m Fly + Extensions				
	Fly Offset				
	0°	15°	30°	45°	
16.0	1,800				16.0
18.0	1,800				18.0
20.0	1,800				20.0
22.0	1,800	1,850			22.0
24.0	1,800	1,850			24.0
26.0	1,800	1,850	2,150		26.0
28.0	1,800	1,850	2,150		28.0
30.0	1,800	1,850	2,100	2,050	30.0
32.0	1,800	1,850	2,000	1,950	32.0
34.0	1,800	1,850	1,900	1,850	34.0
36.0	1,800	1,850	1,850	1,800	36.0
38.0	1,800	1,850	1,750	1,700	38.0
40.0	1,800	1,800	1,700	1,650	40.0
42.0	1,800	1,700	1,600	1,600	42.0
44.0	1,800	1,650	1,550	1,500	44.0
46.0	1,550	1,550	1,500	1,450	46.0
48.0	1,300	1,500	1,400	1,400	48.0
50.0	1,100	1,300	1,350	1,300	50.0
52.0	900	1,100	1,250	1,250	52.0
54.0	750	900	1,050	1,150	54.0
56.0	550	750	850	950	56.0
58.0		550	700	750	58.0
60.0			550	600	60.0

This material is supplied for reference use only. Operator must refer to in-cab Crane Rating Manual and Operator's Manual to determine allowable crane lifting capacities, assembly, and operating procedures.

This Page Intentionally Blank

Link-Belt Cranes Lexington, Kentucky www.linkbelt.com

Link-Belt® is a registered trademark. Copyright 2026. We are constantly improving our products and therefore reserve the right to change designs and specifications.