

TC 1800

**180 U.S. TON | 163 METRIC TON
TELESCOPIC CRAWLER CRANE**

- ✓ **42.7 – 197.3 FT | 13 – 60.1M**
SIX SECTION GREASELESS PIN AND LATCH BOOM
- ✓ **7 INTUITIVE BOOM EXTEND MODES**
MAXIMIZING CAPACITIES AND REACH
- ✓ **10 – 32.5 – 55 FT | 3.1 – 9.9 – 16.8M**
THREE PIECE BI-FOLD LATTICE SMARTFLY
- ✓ **THREE OPTIONAL 18 FT | 5.5 M LATTICE EXTENSIONS**
MAXIMUM TIP HEIGHT OF 314.3 FT | 95.8M
- ✓ **28,280 LBS | 12,828 KG MAXIMUM AVAILABLE LINE PULL**
- ✓ **450 FPM | 137.2 M/MIN MAXIMUM LINE SPEED**
- ✓ **ASYMMETRICAL SIDE FRAME POSITIONING WITH V-CALC**
- ✓ **360° PICK & CARRY CAPACITIES**
- ✓ **HVAC AUXILIARY POWER UNIT OPTION**

Link-Belt
C R A N E S

TEC 1800

180 U.S. TON | 163 METRIC TON
TELESCOPIC CRAWLER CRANE

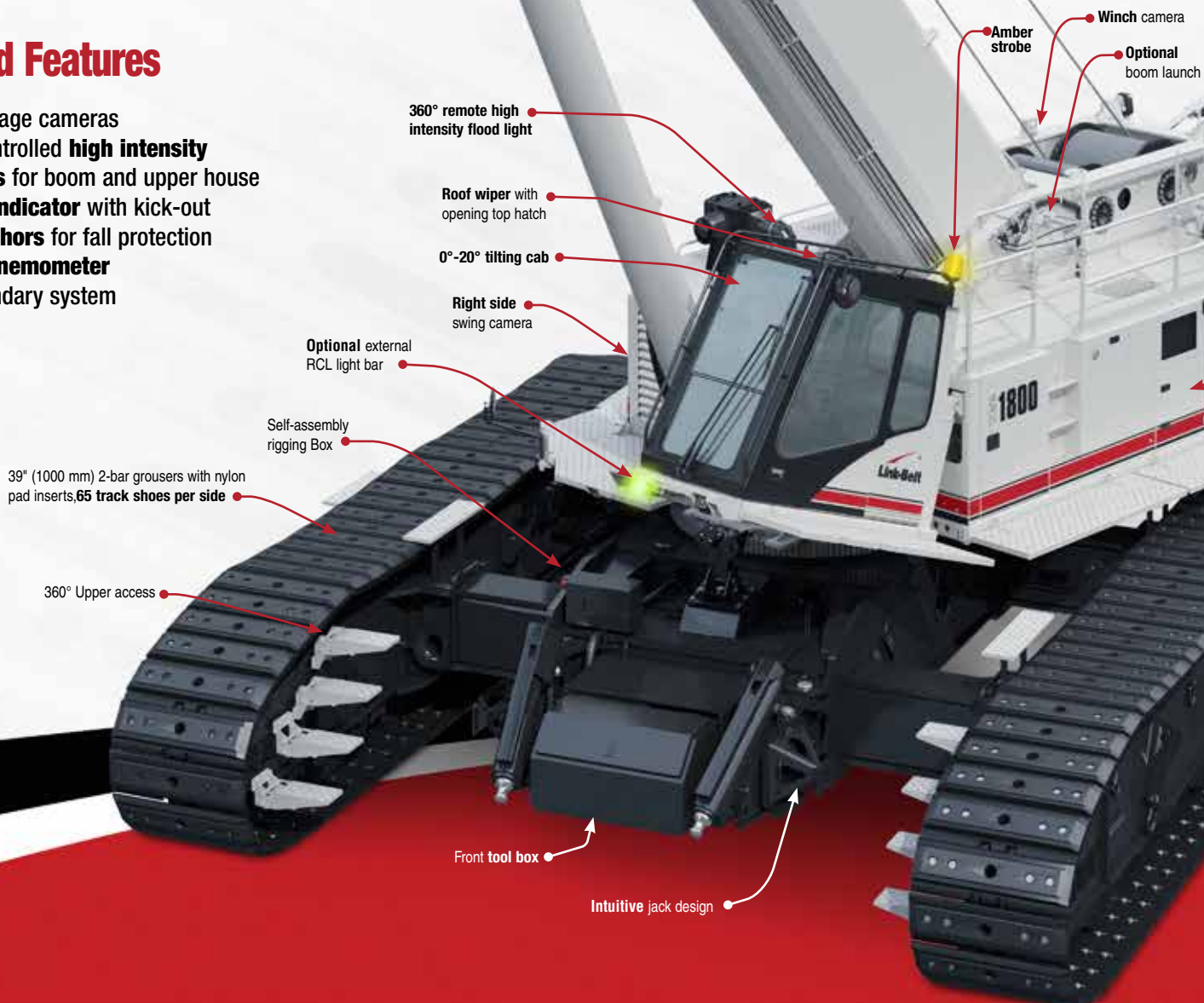


Built To Lift, Engineered To Last

- Purpose-built lower frame **designed for the toughest conditions**
- **Commonality of parts** through Link-Belt's telescopic cranes
- **Robust** hydraulic components
- **Simple track extension** and retraction
- Proudly designed and **manufactured in the USA**

Standard Features

- Vision package cameras
- Remote controlled **high intensity flood lights** for boom and upper house
- **3rd Wrap indicator** with kick-out
- **Tie-off anchors** for fall protection
- **Wireless anemometer**
- Swing boundary system
- **V-CALC**





Back lit compartments allow for visibility during routine engine and hydraulic maintenance

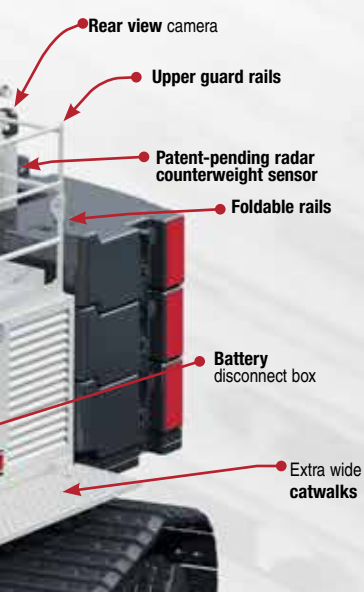


Engine & Pump Package

- Cummins Stage V/Tier 4f 310 hp (231kW) QSB6.7
- Centralized hydraulic pump system
- Battery disconnect box with a 24-volt electrical system
- Advanced CAN-bus diagnostics
- Back lit compartments allow for visibility during routine engine and hydraulic maintenance

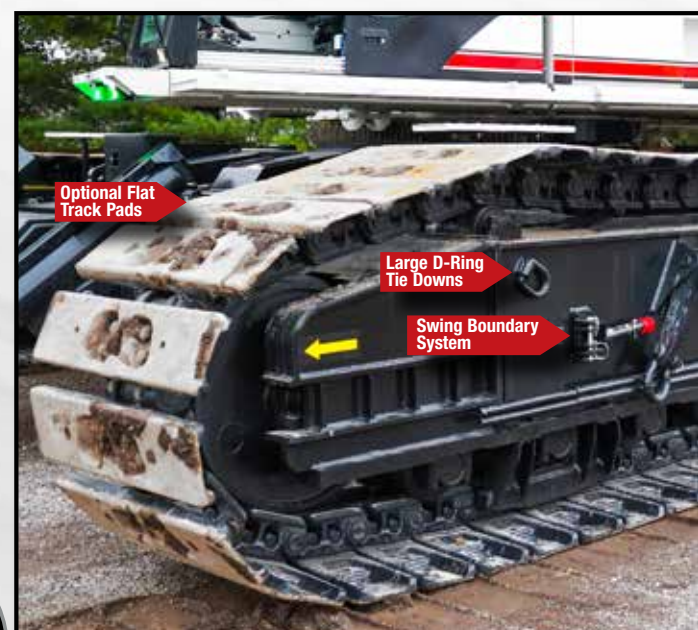
Reliable Wide Winches

- Matching front and rear winches
- 28,280 lbs (12 828kg) maximum line pull
- 450 ft/min (137.2m/min) high line speed
- Visual drum rotation indicators
- Third wrap rotation kick out with audibly and visual alarms
- Grooved lagging

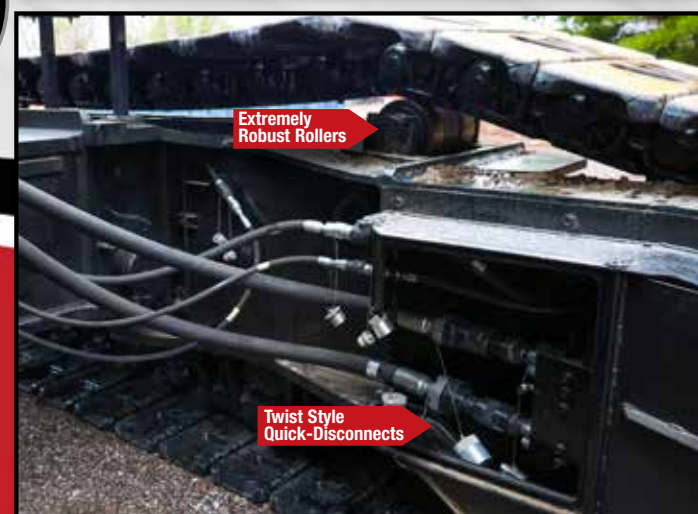


Powerful Tracks that Deliver Smooth Travel with Speed & Precision

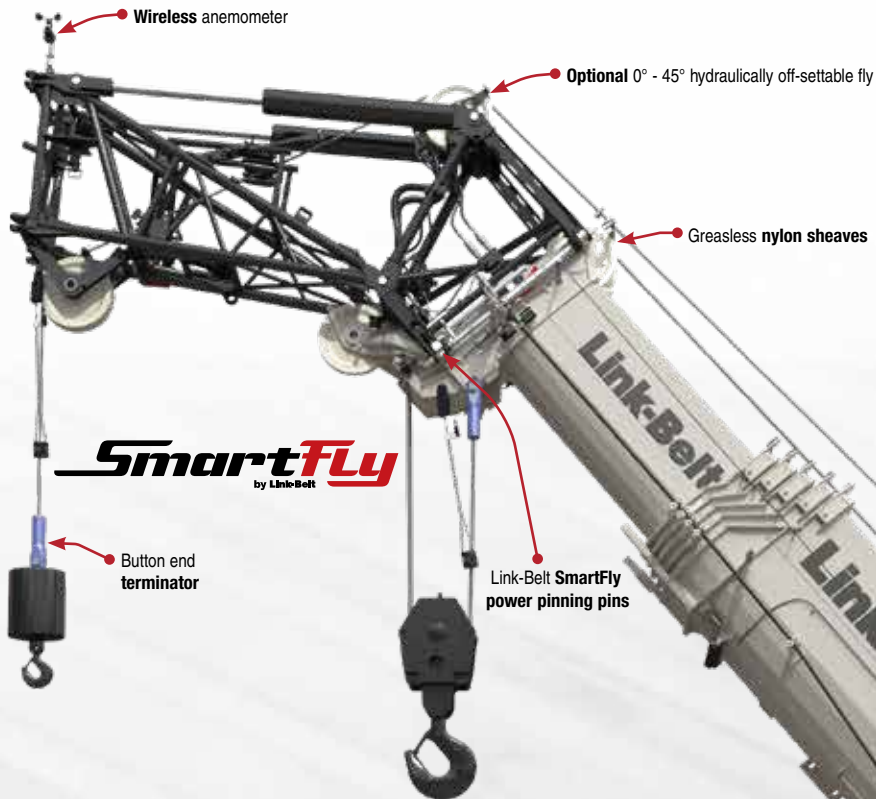
- Robust side frames feature standard 2-bar grousers with nylon pad inserts to tackle any condition
- Optional flat track pads
- Smooth, even track extension and retraction in any counterweight configuration all controlled from the cab
- Standard adjustable swing boundary poles that stow on the side frames
- Drive sprockets, idlers and rollers are fully sealed and lubricated for life
- V-CALC technology offering asymmetrical track positions with full 360° charts and swing arrest
- Automatic hydraulic track tensioning



Sealed oil-filled idlers upper and lower rollers



Link-Belt has the only greaseless, high-capacity formed booms designed and built in North America!

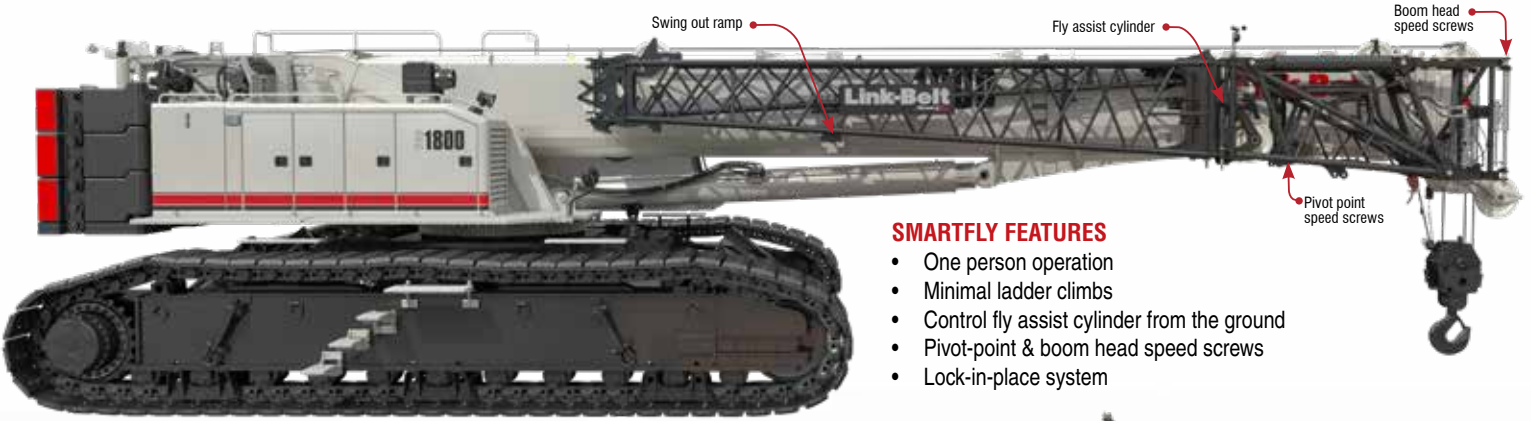


Greasless pin & latch boom with attachment versatility

- Simple and reliable features reduce maintenance, operating costs, downtime, and ladder climbs!
- Button style terminator simplifies reeving and setup changes
- Hydraulic or manual offsetable SmartFly: 0° – 45°
- No deducts for stowed attachments
- Unpinned charts in every configuration
- Two-line lift capabilities with one load charted in all 7 boom modes!

SmartFly

by Link-Belt



SMARTFLY FEATURES

- One person operation
- Minimal ladder climbs
- Control fly assist cylinder from the ground
- Pivot-point & boom head speed screws
- Lock-in-place system

BOOM FEATURES

- Quick reeve boom head with fall arrest anchors
- Remote controlled LED high intensity light mounted on boom base & upper frame
- Wireless anemometer

ATTACHMENT VERATILITY

- 10 ft - 32.5 ft - 55 ft Offsettable 3-Piece SmartFly
- Manual or hydraulic offsets of 0° - 45°
- Auxiliary lifting sheave in the working position does not interfere with fly erected
- 1, 2, or 3 - 18 ft lattice inserts

**197.3 ft + 55 ft
SmartFly + 54 ft
Extensions**

**197.3ft + 55 ft
SmartFly**

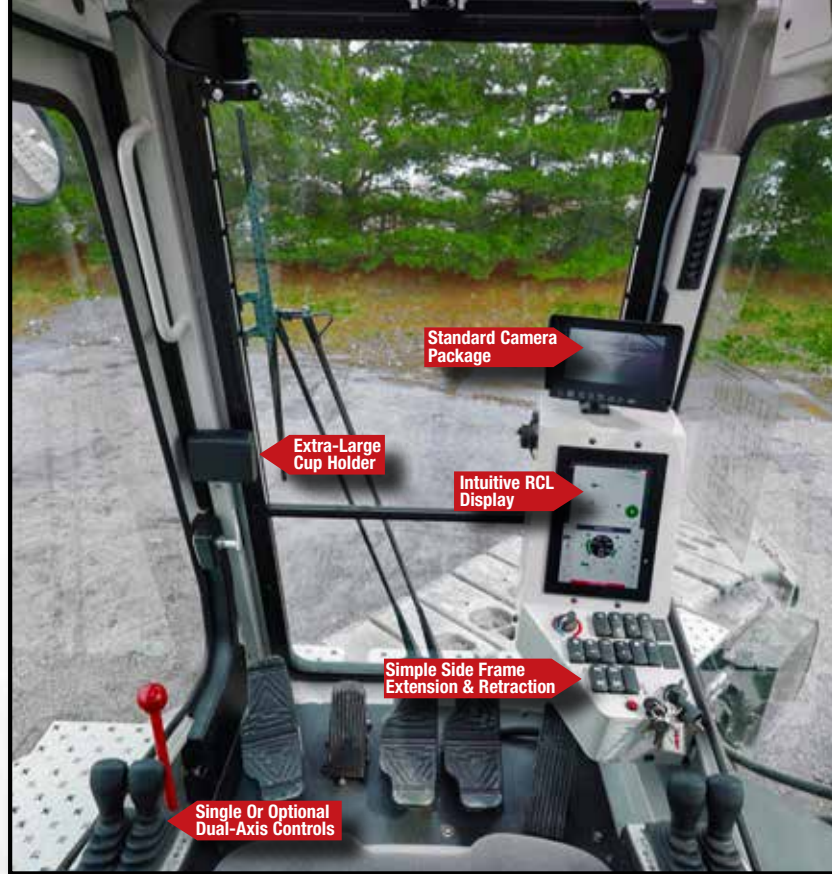
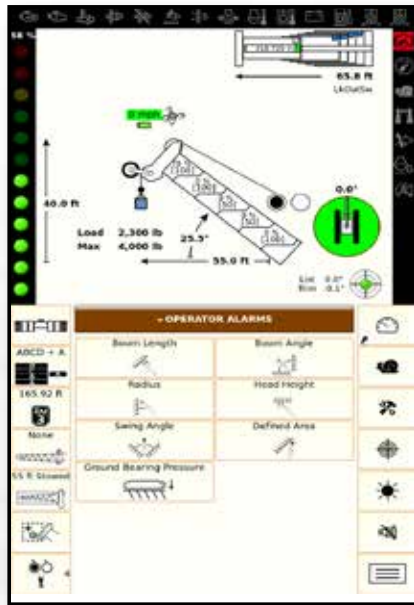
**197.3 ft + 10 ft
SmartFly**

**197.3 ft
Main Boom**



Simple. Easy. Smart. Pulse 2.0

- 10 in (25.4cm) full-color touchscreen display
- Integrated Rater Capacity Limiter and engine information
- V-CALC with real-time 360° charts featuring incorporated swing arrest
- Live/simulated ground bearing pressure readings
- List capacities for 1°, 2°, 3°, and 4°
- Fine metering
- Advanced diagnostics and monitoring features paired with telematics
- Wi-Fi enabled software updates
- AM/FM radio with Bluetooth® and built in NOAA weather radio
- Built-in operator's manual

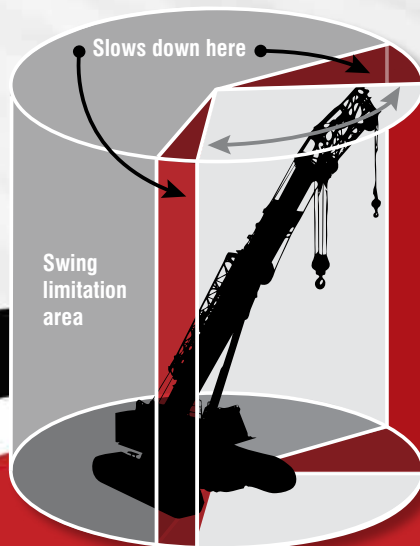


Comfort + Functionality

- 0° – 20° wide tiltable cab
- Continuous display of crane configuration and load on hook
- Robust HVAC system
- Large comfortable foot peddles
- Six-way adjustable seat
- Adjustable armrest console with single-axis or joystick controls
- Electric controls for variable hoist, swing, and travel performance
- Fingertip switches for left and right side frame extension and retraction
- Rear, right side, and winch view cameras with dedicated camera display

Operator aid features

- Operator settable alarms with function kick-out includes left and right slew angle, maximum and minimum boom angles, maximum tip height, maximum boom length, and operator defined area.



Insight Simplified

Cellular-based telematics data logging and monitoring system that provides:

- Location and operational settings
- Routine maintenance
- Crane and engine monitoring
- Diagnostic and fault codes
- Load on hook
- Optional data sharing with distributor & Link-Belt Cranes for real time diagnostics



Simplify The Haul

- Fully configured – transports in FIVE LOADS
- 107,967 lbs (48 973 kg) main transport load
- All overflow loads transport under 44,000 lbs (19 958 kg)
- Complete self-assembly capabilities
- Robust lower jacks with excellent ground clearance
- Hydraulic hook and pin removable side frames
- Large, dedicated tie-down D-Rings



Fast & Easy Self-Assembly

- Quick twist hydraulic couplers
- Hook and pin side frames
- FOR JACKS, Side frame pinning and upper cut removal
- Wireless rigging remote control





Link-Belt Construction Equipment Company is a leader in the design, manufacture and sales of telescopic and lattice boom cranes with headquarters and manufacturing facilities in Lexington, Kentucky, USA. Link-Belt is committed to the manufacture and service of high quality products that satisfy customers worldwide

Towards that end, Link-Belt has pursued a strategy of growth and investment. It has moved aggressively to seize more global market share by producing a broader range of products and strengthening distribution and personnel around the globe.

Link-Belt is also home to a family of passionate professionals with a legacy of innovation and cutting-edge technology spanning over 140 years. These professionals, in a 770,800 sq. ft. (71 609 m2) manufacturing facility and with a culture of continuous innovation, have pushed Link-Belt to be the most modern crane manufacturer in North America.

Your crane investment is always protected... with your Link-Belt distributor.

When you invest in a Link-Belt crane, you invest in a legacy of outstanding customer support dating back to 1874. The ultimate value of a machine begins with state-of-the-art design and quality manufacturing, but it is the excellent Link-Belt distributor product support that determines its long term value. This philosophy has earned Link-Belt cranes the enviable position of traditionally commanding some of the highest resale prices in the industry.

As a member of Link-Belt Cranes user's group, you will have access to:

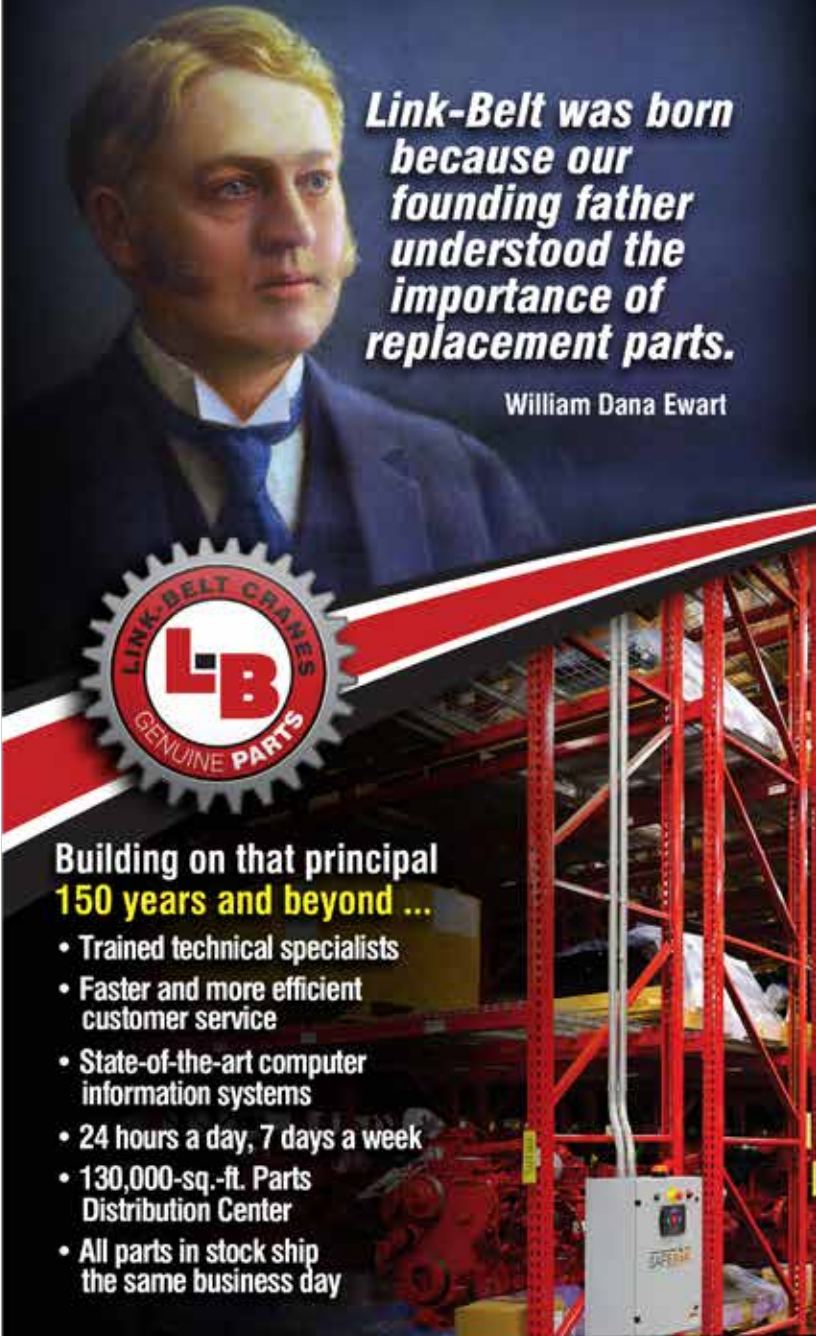
- A comprehensive online library of parts, service & operator manuals for **YOUR** crane
- Interactive, live groundbearing calculations for **YOUR** crane
- Online access to recommended spare parts lists, filter, lube and key lists plus maintenance information and more
- No annual fee or charges to access your crane information
- Factory-trained distributor support
- Experienced factory technicians
- 24/7 parts distribution with 95% availability
- Factory parts customer service reps
- Link-Belt certified structural repair
- Boom inspection
- 3D lift planning
- Plus a vast array of information on new products, services and special offerings



... to be recognized as a **leader** in **customer service & satisfaction.**
— The Link-Belt Vision

Link-Belt was born because our founding father understood the importance of replacement parts.

William Dana Ewart



Building on that principal **150 years and beyond ...**

- Trained technical specialists
- Faster and more efficient customer service
- State-of-the-art computer information systems
- 24 hours a day, 7 days a week
- 130,000-sq.-ft. Parts Distribution Center
- All parts in stock ship the same business day



- Web-based, active 3D, high graphic
- User-friendly, no CAD program required
- Always current, no updates required
- Print actual lift



- Dynamic specific machine model puntion loadings
- Graphically illustrated in 360° numerical presentation
- Print out



Link-Belt
CRANES

Lexington, Kentucky | www.linkbelt.com

©Link-Belt is a registered trademark. Copyright 2026 All rights reserved. We reserve the right to change designs specifications at any time. Litho in U.S.A. 6/26 4729 LIT#4627