



# 120|HT 120|HT<sub>LB</sub>

120 U.S. ton | 110 metric ton  
Hydraulic Truck Crane

**Link-Belt®**  
C R A N E S

# 120|HT 120|HT<sub>LB</sub>

120 U.S. TON | 110 METRIC TON HYDRAULIC TRUCK CRANE

## REMARKABLE CONTROL, RELIABILITY, 2 BOOM OPTIONS AND CAPACITY PERFORMANCE

- ✓ **38.3-164.1 FT | 11.7 - 50.0 M 6-SECTION PIN & LATCH STANDARD BOOM WITH ATTACHMENT FLEXIBILITY**
  - 9.5-35-58 FT | 3.0-10.7-17.7 M THREE-PIECE, BI-FOLD, ON-BOARD LATTICE ATTACHMENT WITH 0°, 15°, 30°, 45° OFFSETS
  - OPTIONAL TWO 16 FT | 4.9 M LATTICE INSERTS PROVIDE A TOTAL ATTACHMENT LENGTH OF 90 FT | 27.4 M
  - 262 FT | 79.7 M MAXIMUM TIP HEIGHT
- ✓ **39.8-197 FT | 12.1 - 60.0 M 7-SECTION PIN & LATCH LONG BOOM WITH ATTACHMENT FLEXIBILITY**
  - 9.5-35-58 FT | 3.0-10.7-17.7 M THREE-PIECE, BI-FOLD, ON-BOARD LATTICE ATTACHMENT WITH 0°, 15°, 30°, 45° OFFSETS
  - 263 FT | 80.1 M MAXIMUM TIP HEIGHT
- ✓ **WINCHES DELIVER IMPRESSIVE LINE PULL AND LINE SPEED PERFORMANCE**
  - 23,632 LBS | 105.12 KN MAXIMUM WINCH LINE PULL
  - 354 FPM | 107.9 M/MIN MAXIMUM WINCH LINE SPEED
- ✓ **WITH COUNTERWEIGHT FLEXIBILITY, A POWERFUL ENGINE PACKAGE, AND INDEPENDENT AIR-RIDE SUSPENSION — THE 120|HT DELIVERS INCREDIBLE MOBILITY ON THE ROAD AND ON THE JOBSITE**



Integrated air conditioning

Operator's cab with AM/FM radio and BlueTooth™

Swing camera

Large engine doors allow for easy access

Overhead console for document storage with AM/FM radio

Right side viewing camera

Self-storing fifth outrigger pontoon

Integrated air conditioning

Aluminum wheels and radial tires

Air Disc Brakes

All new independent air suspension. Industry leading GAWR of 111,200 lbs





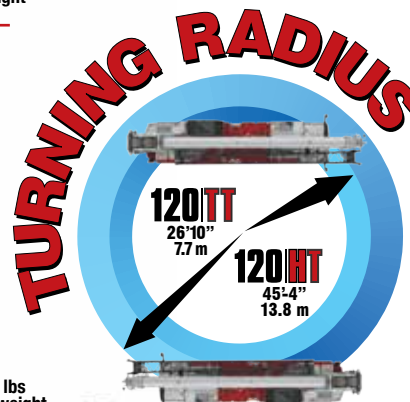
## Powerful and responsive hydraulics

- Two-speed hydraulic piston motor system delivers superior hoisting. Matched size optional front and rear winches provide equal max line pulls of 23,632 lbs (105.12 kn) and max line speeds of 354 fpm (107.9 m/min) on 15" (38.1 cm) root diameter grooved drums.
- Drum rotation indicators - standard.

## TT|TTLB Designed for amazing job-site maneuverability

**Steerable all wheel axles, in conjunction with super single tires, makes the HTT even harder to beat on the job-site, and NO changes to the on-outrigger capacity charts.**

- Drive and steer capabilities for the rear axles
- Rear axles self-center and lock in the straight ahead position for high speed travel
- Only one spare rim and tire combination is needed
- Transverse (cross-axle) differential locks that greatly improve traction on unimproved job-site conditions.



\*Standard 16,500 lbs (7.5 mt) counterweight

\*Up to 49,100 lbs (22.2 mt) optional counterweight

### CONVENTIONAL



Front

### AUXILIARY

Less than 15 mph (24 km/hr)



Rear



Combination



Diagonal



**Carrier-mounted outrigger controls,** located on each side of the carrier, include an engine throttle-up switch for fast outrigger deployment. For fine level adjusting of the carrier, throttle can be taken down to idle. Including auto-level.

**Stow 'n Go**  
outrigger pontoons



# Link-Belt PULSE 2.0

## Total crane operating system

**Link-Belt Pulse 2.0** is the Link-Belt designed total crane operating system. It includes the rated capacity limiter, boom extend mode controller (EMC), self-diagnostic capabilities and continuous monitoring of multiple crane functions and conditions. To aid operators in a safe and efficient operation, its high-resolution, color-intense graphic display provides excellent contrast even in direct sunlight.



Dual axis controllers

Available single axis controllers

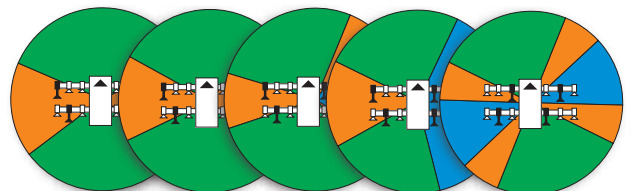
## Operator's cab provides ergonomic comfort and control

### Roomier and quieter operator's cab

- Extra large windows throughout for excellent visibility
- Excellent ventilation via a large sliding door, side and rear windows, and hinged roof window
- Single or dual axis, electronic operated controller mounted on armrest for outstanding operator comfort
- 6-way adjustable power tilting seat
- All gauges, switches, indicators, and controls are located in the operator's forward line of sight
- Winch and right side swing view cameras
- In cab comfort is maintained by the standard heater and air conditioning

## 81 charted outrigger configurations

- ✓ **SAFE, SIMPLE, AND EASY TO UNDERSTAND!**
- ✓ **USER FRIENDLY INTERFACE**
- ✓ **INCORPORATED SWING ARREST**
- ✓ **LIVE PREVIEW MODE**





# Latest, simple, one-person fly erection technology minimizes work-at-height!



Optional: 9.5-35-58 ft (3.0-10.7-17.7 m) three-piece bi-fold, lattice attachment with 0°, 15°, 30°, and 45° offsets

## SmartFLY<sup>®</sup> by Link-Belt

- One person operation
- Swing around at 0°
- Minimal ladder climbs
- Control fly assist and boom hoist cylinder from the ground
- Pivot-point & boom head speed screws



**2 LOAD LINE LIFTS CHARTED  
IN ALL BOOM MODES!**

- Innovative 9.5 ft (3.0m) fly is integral to one of the on-board fly options.
- Over 24 tons (21.7 mt) capacity and one-load two-line lift procedures.
- Manual offsets: 0°, 15°, 30°, 45°



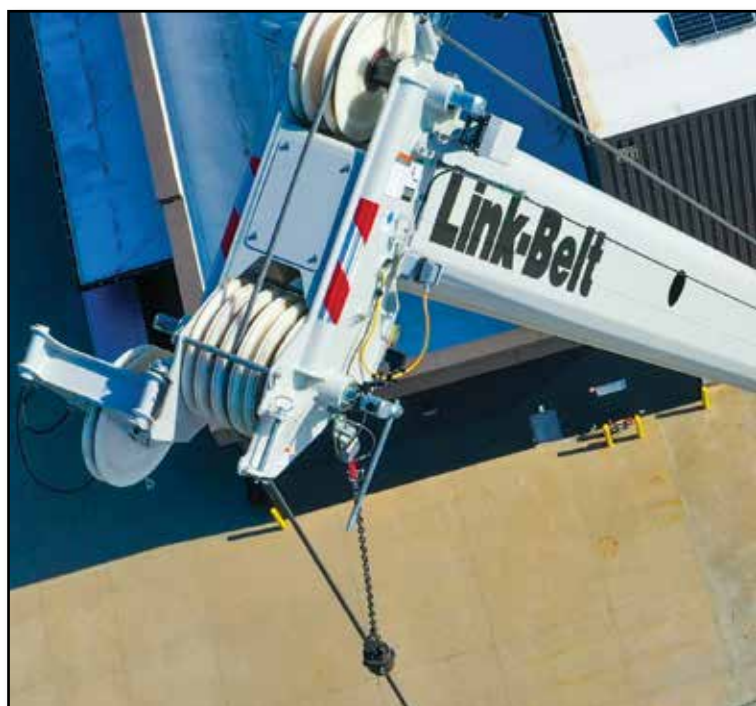
New efficient fly pinning design focuses on the ease of assembly/disassembly



Fly erection and stowing assist cylinder

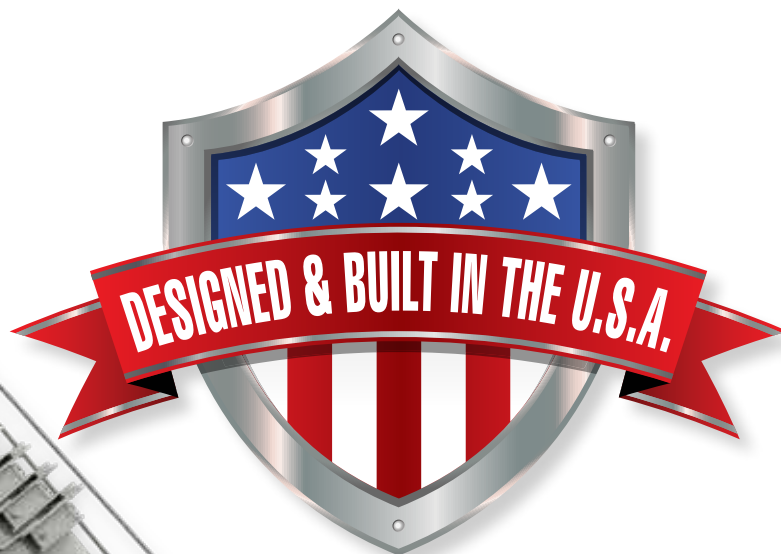


Rope keeper maintains travel of rope through sheaves. One handed operation.



Quick reeve boom head eliminates the need to remove the becket when it becomes necessary to change the reeving.

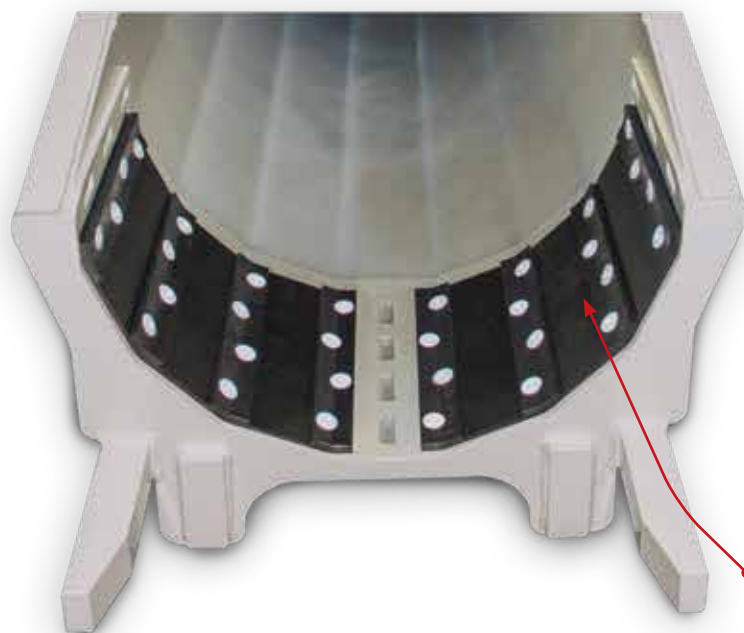
Wind speed indicator



Boom dolly connections-Standard

Mechanical boom angle indicator - standard

**The only greaseless, high-capacity formed booms designed and built in North America!**



Teflon impregnated boom wear pads

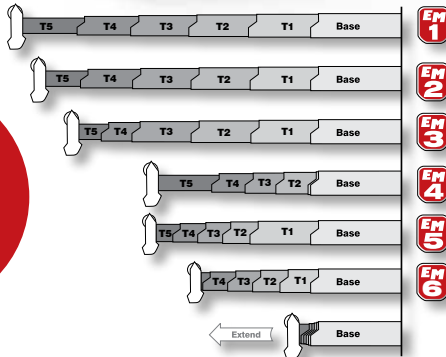


# Superior capacities and extension ranges

## 120|HT



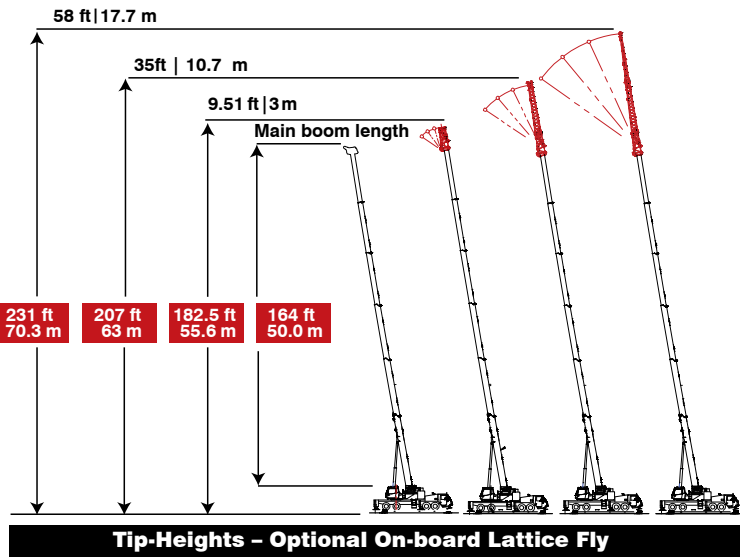
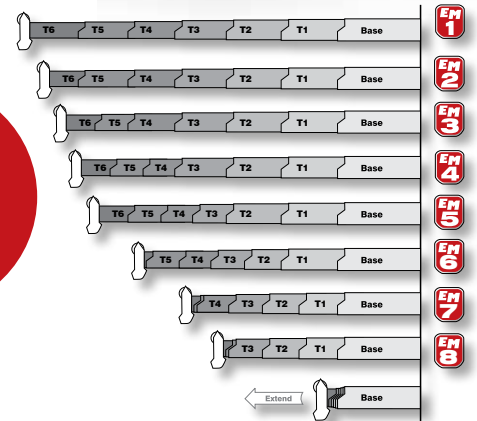
**ONLY  
6  
EXTEND  
MODES**



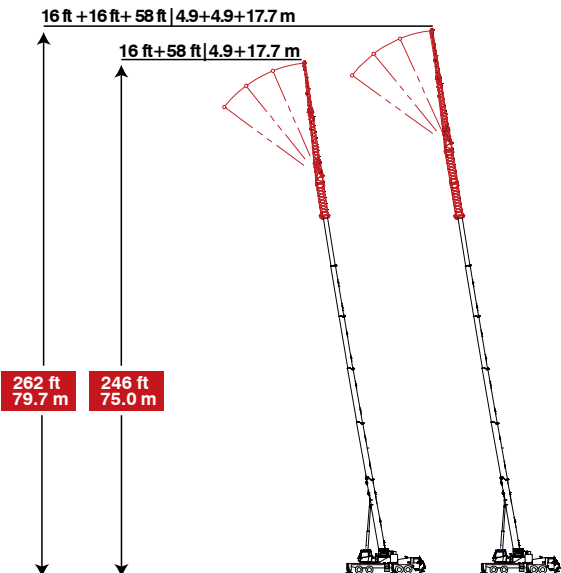
## 120|HT<sub>LB</sub>



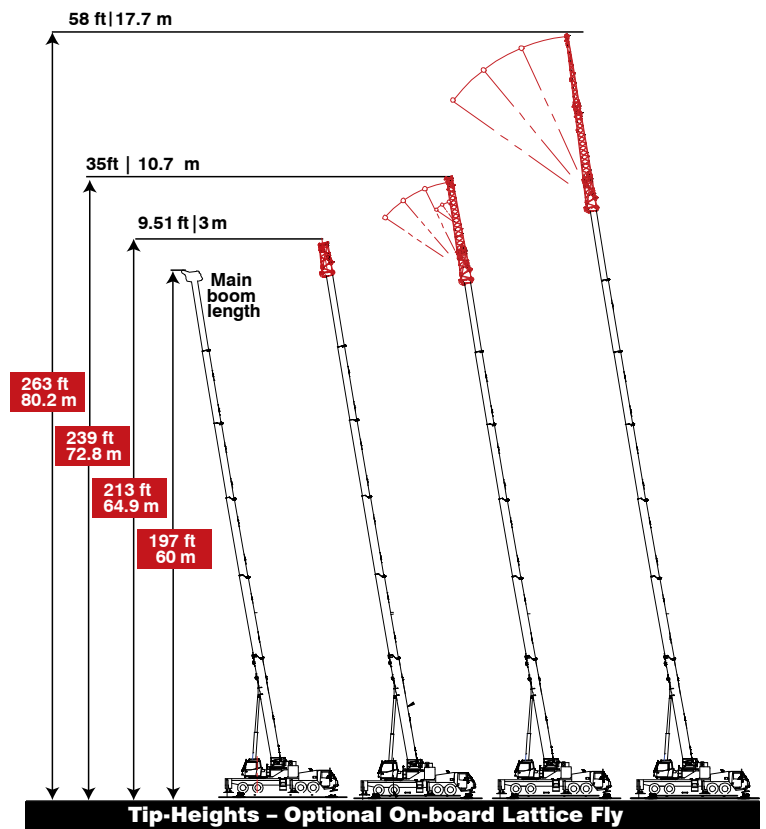
**ONLY  
8  
EXTEND  
MODES**



9.5 ft – 35 – 58 ft | 3.0 – 10.7 – 17.7 m three piece, bi-fold, on-board lattice attachment with 0°, 15°, 30°, and 45° manual offsets.



The optional 58 ft | 17.7 m two or three-piece offsettable bi-fold fly can be extended by adding up to two optional **16 ft | 4.9 m lattice inserts** with 0°, 15°, 30°, and 45° manual offsets.



# Superior accessibility



The **pull-out CabWalk™** slides out from its secured travel position underneath the operator's cab to give the operator a platform to stand on for easy entry and exit from the cab.



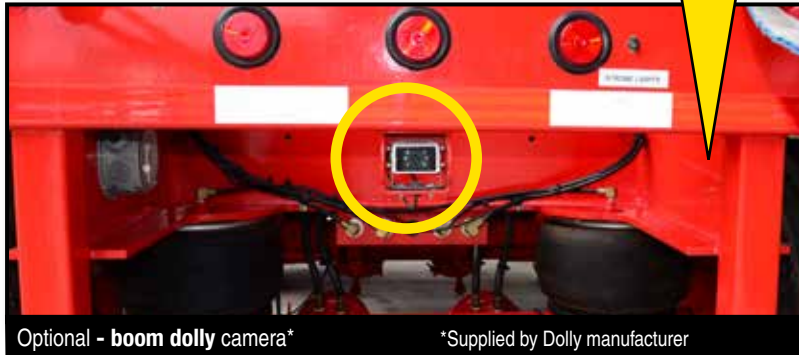
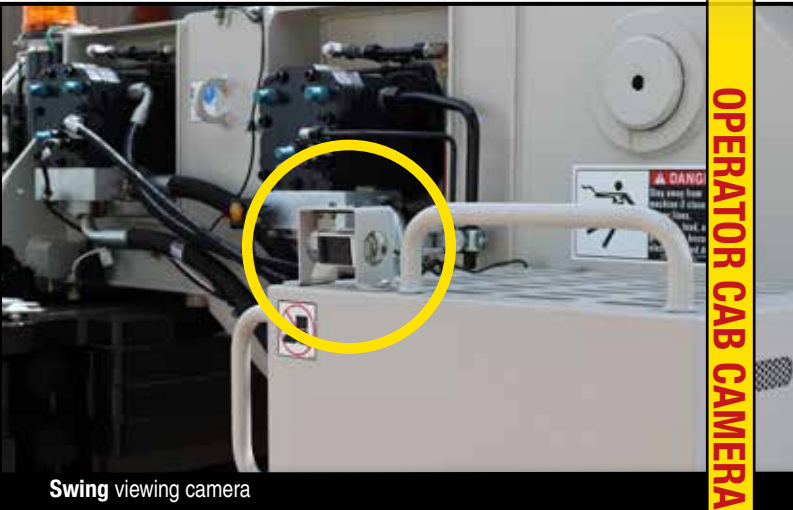
The upper work platform with **folding handrails** allows for easy inspection and maintenance of the 120|HT.

Access to the operator's cab and engine compartment is superb with **strategically located ladders and steps**.





See what you've been missing – onboard cameras!



\*Supplied by Dolly manufacturer

OPERATOR CAB CAMERAS

CARRIER CAB CAMERAS



# Road and job site ready!



- **ZF TRAXON** (no clutch pedal)—12 speeds forward, 2 speeds reverse with two modes of operation: **fully automatic** and **semi-automatic**
- **Job site travel** is permissible with counterweight for exceptional job site versatility.
- **Boom dolly/trailer Standard** with boom float kit, rear electrical and air connections.
- **Cruise control**
- **Intarder braking**
- **Ether injection system**—optional



Standard rear electrical and air connections



## Comfortable carrier cab:

- Dash-mounted **comprehensive instrumentation** with back-lit gauge
- Roll up/down door window provides **excellent ventilation**
- Fully adjustable **air-ride fabric seat**
- **New carrier cab** 9" wider
- Air bag mounted
- Air ride seat with lumbar support



## Wireless Rigging Remote

- **Wireless rigging remote** for simplified setup & teardown
- **Able to actuate both winches, extend O/R beams & jacks, as well as raise and lower the boom from ground level**
- **Reduces need for work at height and allows for single-operator machine setup**





# Work light package — Standard

Lighting packages include:



Work light package -9 work lights provide superior night visibility



Dual boom floodlight & high intensity remote controlled floodlight



Cab and upper mounted work lights

## Illuminated compartments and controls for night-time operation



Upper electrical panel



Fuel filter



Outrigger controls





Link-Belt Construction Equipment Company is a leader in the design, manufacture and sales of telescopic and lattice boom cranes with headquarters and manufacturing facilities in Lexington, Kentucky, USA. Link-Belt is committed to the manufacture and service of high quality products that satisfy customers worldwide

Towards that end, Link-Belt has pursued a strategy of growth and investment. It has moved aggressively to seize more global market share by producing a broader range of products and strengthening distribution and personnel around the globe.

Link-Belt is also home to a family of passionate professionals with a legacy of innovation and cutting-edge technology spanning over 140 years. These professionals, in a 770,800 sq. ft. (71 609 m2) manufacturing facility and with a culture of continuous innovation, have pushed Link-Belt to be the most modern crane manufacturer in North America.

## Your crane investment is always protected... with your Link-Belt distributor.

When you invest in a Link-Belt crane, you invest in a legacy of outstanding customer support dating back to 1874. The ultimate value of a machine begins with state-of-the-art design and quality manufacturing, but it is the excellent Link-Belt distributor product support that determines its long term value. This philosophy has earned Link-Belt cranes the enviable position of traditionally commanding some of the highest resale prices in the industry.

As a member of  
Link-Belt Cranes  
user's group, you  
will have access to:

- A comprehensive online library of parts, service & operator manuals for **YOUR** crane
- Interactive, live groundbearing calculations for **YOUR** crane
- Online access to recommended spare parts lists, filter, lube and key lists plus maintenance information and more
- No annual fee or charges to access your crane information
- Factory-trained distributor support
- Experienced factory technicians
- 24/7 parts distribution with 95% availability
- Factory parts customer service reps
- Link-Belt certified structural repair
- Boom inspection
- 3D lift planning
- Plus a vast array of information on new products, services and special offerings



"... to be  
recognized  
as a  
**leader**  
in  
**customer  
service &  
satisfaction.**"  
— The Link-Belt Vision



- Web-based, active 3D, high graphic
- User-friendly, no CAD program required
- Always current, no updates required
- Print actual lift



- Dynamic specific machine model pontoon loadings
- Graphically illustrated in 360° numerical presentation
- Print out



**Link-Belt was born  
because our  
founding father  
understood the  
importance of  
replacement parts.**

William Dana Ewart

**Building on that principal  
150 years and beyond ...**

- Trained technical specialists
- Faster and more efficient customer service
- State-of-the-art computer information systems
- 24 hours a day, 7 days a week
- 130,000-sq.-ft. Parts Distribution Center
- All parts in stock ship the same business day

**Link-Belt**  
CRANES  
Lexington, Kentucky | [www.linkbelt.com](http://www.linkbelt.com)

**150**  
YEARS OF  
INNOVATION

©Link-Belt is a registered trademark. Copyright 2025 All rights reserved. We reserve the right to change designs specifications at any time. Litho in U.S.A. 5/25 4666 LIT#4619