

Link-Belt

C R A N E S

90|RT

ROUGH TERRAIN CRANE 90-TON | 85 MT

**Remarkable control, reliability
and capacity performance**

- ✓ 40.6' - 155' | 12.3 - 47.2 m FIVE SECTION FULL-POWER BOOM
- ✓ 35'-58' | 10.7 - 17.7 m TWO PIECE OFFSETTABLE FLY
- ✓ ONE 16' | 4.9 M LATTICE BOOM EXTENSION
- ✓ 237' | 72.3 M MAXIMUM TIP HEIGHT
- ✓ BOOM LENGTH AND CAPACITY OUTREACHES/OUTLIFTS ALL COMPETITION
- ✓ SIMPLE OPERATION – 2 BOOM EXTEND MODES
- ✓ LINK-BELT PULSE 2.0 – TOTAL CRANE OPERATING SYSTEM WITH V-CALC AND TELEMATICS
- ✓ FULL LED LIGHTING PACKAGE WITH 3 ON-BOARD CAMERAS
- ✓ TRANSPORTS AT UNDER 94,000 LBS | 42 637 KG WITHOUT COUNTERWEIGHT
- ✓ *SmartFly* LATEST, SIMPLE, ONE-PERSON FLY ERECTION TECHNOLOGY MINIMIZES WORK-AT-HEIGHT!

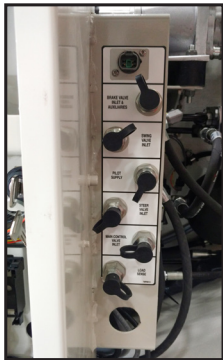
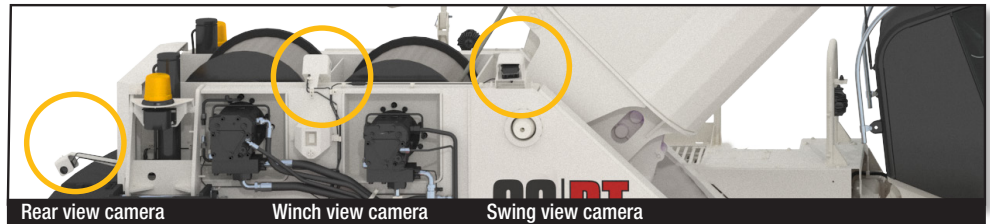


90|RT

ROUGH TERRAIN CRANE 90-TON | 85 MT

Service and maintenance just got easier!

- ✓ 24 VOLT ELECTRICAL SYSTEM
- ✓ CENTRALIZED GREASE BANK AND PRESSURE CHECKS
- ✓ MULTIPLEXING CAN-BUS ELECTRICAL NETWORK
- ✓ GREASELESS FOUR-LINK CARRIER SUSPENSION
- ✓ SERVICEABLE PONTONS
- ✓ REMOTE MOUNTED TRANSMISSION OIL, ENGINE OIL, AND FUEL FILTERS

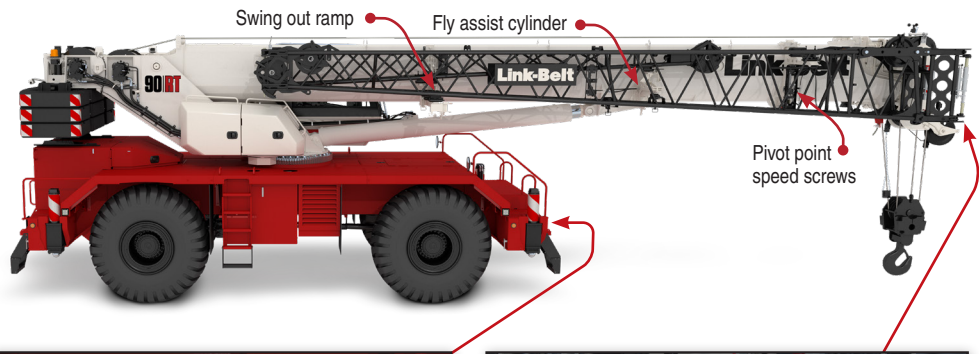


Centralized pressure check and grease bank

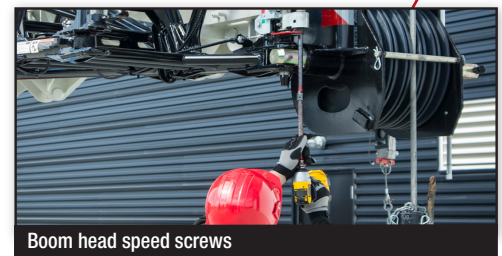
Allows operator to check six pressures and grease three different points from one centralized location on the upper frame. Boom foot pins, head machinery sheaves, and cab tilt cylinder are also greaseless

Transport weight of less than 94,000 lbs | 42 637 kg includes:

- ✓ MAIN & AUX WINCHES WITH WIRE ROPE & CABLE FOLLOWERS
- ✓ 35'-58' | 10.7-17.7 m 2-PIECE FLY STOWED
- ✓ 60 TON HOOK BLOCK
- ✓ 10 TON HOOK BALL
- ✓ AUX LIFTING SHEAVE
- ✓ FULL TANK OF FUEL



Ground level controls for fly erection



Boom head speed screws

Operator's cab features

- 0-20° tilting cab
- Extra large windows throughout provide 20% more visibility
- Internal rated capacity limiter light bar
- Integrated air conditioning with automatic temperature control
- New single and dual axis electronic controllers

SmartFLY
by Link-Belt

The latest simple technology that minimizes work-at-height!

- One-person operation
- Swing around at 0°
- Minimal ladder climbs
- Control fly assist and boom hoist cylinder from the ground
- Pivot-point & boom head speed screws



Link-Belt
CRANES

Lexington, Kentucky USA | www.linkbelt.com

© Link-Belt is a registered trademark. Copyright 2025. All rights reserved.
We reserve the right to change designs and specifications at any time.
Litho in U.S.A. 4712 7/25 #XXXX