



**Link-Belt**  
C R A N E S

# 348

SERIES 2

300 ton | 272.2 mt Lattice Crawler Crane

- Impressive **heavy duty and long-range boom** configurations offer superior capacities
- Strong **fixed jib with multiple offsets** works with both the heavy duty and long range top
- **Luffing boom** option with the very latest ease of assembly features
- Comfortable spacious operator's cabin with **latest rated capacity limiter technology & color graphics**
- Smooth whisper quiet **Cummins power** with Cummins global support
- Field-proven **flawless reliability** of all power system components
- Hoist drums deliver **high capacity performance**
- **Self-assemble** with standard mast assembly cylinder
- Wide choice of machine options for **custom applications**





# 348

## SERIES 2

300 ton | 272.2 mt Lattice Crawler Crane

# Delivers Performance

## At The Core

The new Link-Belt 348 Series 2 delivers the perfect blend of high performance hoisting with controls that provide for the most delicate of load placement requirements.

No need to compromise between the need of big lifting capacity ability and the requirements of delivering high production performance.

Major weldments are precision machined for all critical contact mating surfaces assuring 100% contact as designed for smooth integral operation.

## Big capacities require a boom designed with strength in mind!

The foundation of the 348 attachment starts with the heavy duty boom, with up to 250' of HD boom extensions (including 20' HD base extension) provides high capacity close-in radius picks, as well as serving as the luffing boom for luffing configuration.

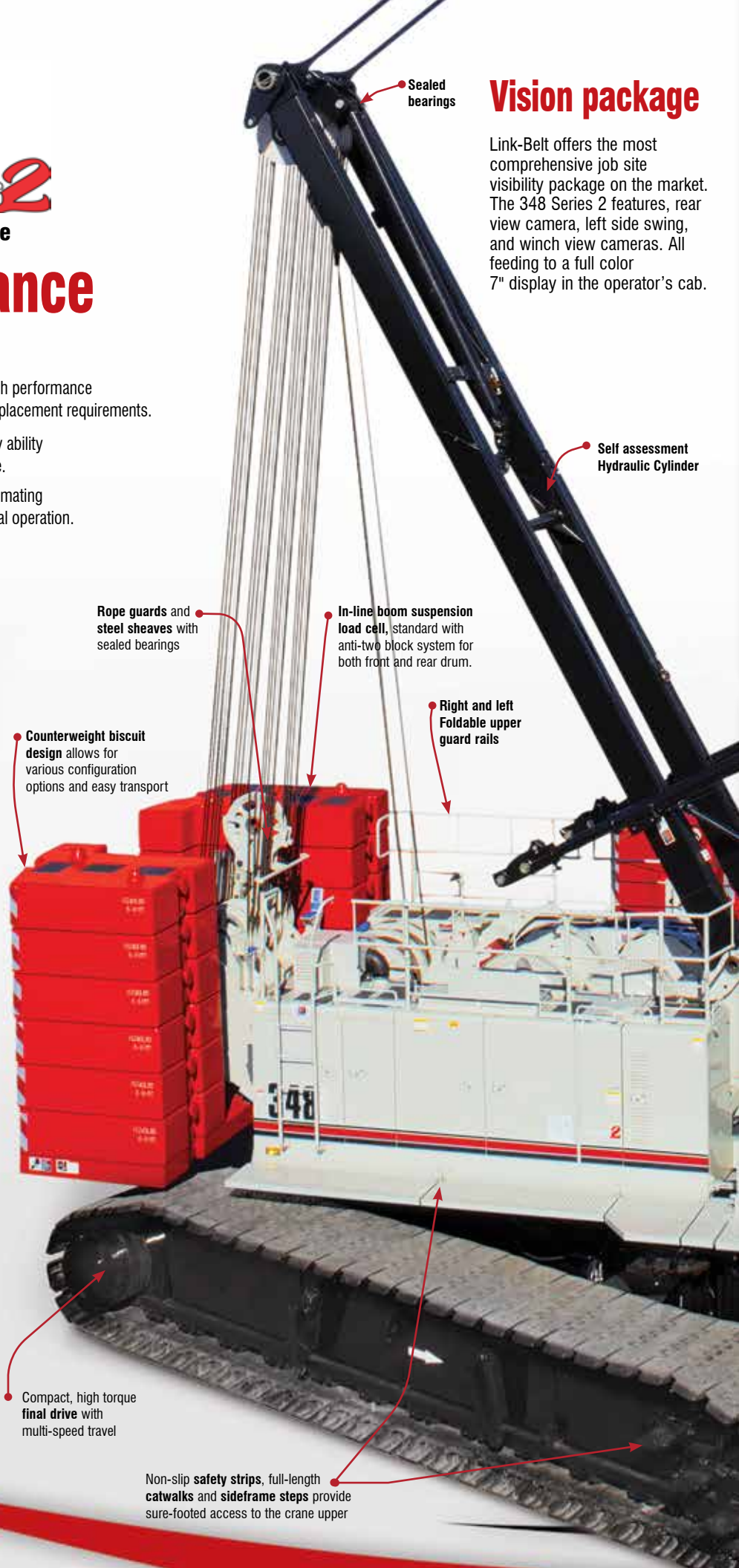
- The 348 long range boom extensions take over where the heavy-duty boom extensions leave off and, when utilized with the optional long range top, delivering superior extended radius capacities.
- Long range extensions and long range top are also used in the luffing jib boom make-up.

## Technology

- Intuitive, logical operation and layout of the 348 S2 rated capacity limiter makes the operator feel at ease and builds confidence in operating a machine of this size.
- Link Belt Vison package brings the jobsite to the cabin, allowing more efficient use of the operator's time and attention.
- Telematics works 24/7 providing critical data for your crane and your business available now or in the future, your covered with the 348SII.

## Vision package

Link-Belt offers the most comprehensive job site visibility package on the market. The 348 Series 2 features, rear view camera, left side swing, and winch view cameras. All feeding to a full color 7" display in the operator's cab.



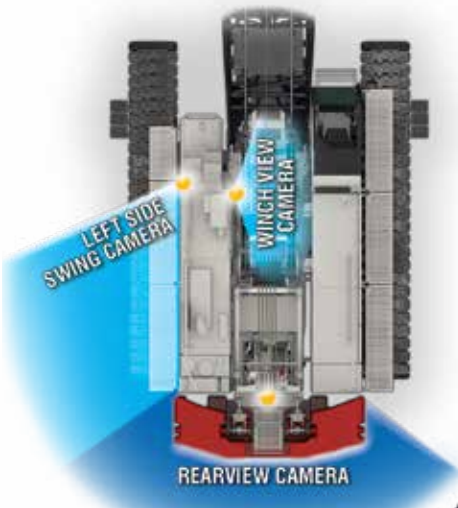
Hydraulic actuated hook & pin side frames for easy installation



Compact, high torque final drive with multi-speed travel

Non-slip safety strips, full-length catwalks and sideframe steps provide sure-footed access to the crane upper





Bar Pendants store on boom for transport



**Double tapered connecting pins**  
For installation/removal from outside of boom. Boom connecting pins store in pin catchers for transport.



**Hydraulic flow volume for precise control**



**Pilot-operated armchair controls** with adjustable sliding console



**Variable hand throttle** for infinite main pump control.

20' base section  
Hydraulic back stop cylinder  
15' base section

Full contact 50" track shoe design for maximum contact area minimizes ground bearing pressure

Completely sealed lower, hydraulic cylinder track tensioning system and travel limit adjustment

75,400 lbs | 34 201 kg of hook and pin-mounted car body counterweights

## Telematics. You own the data!

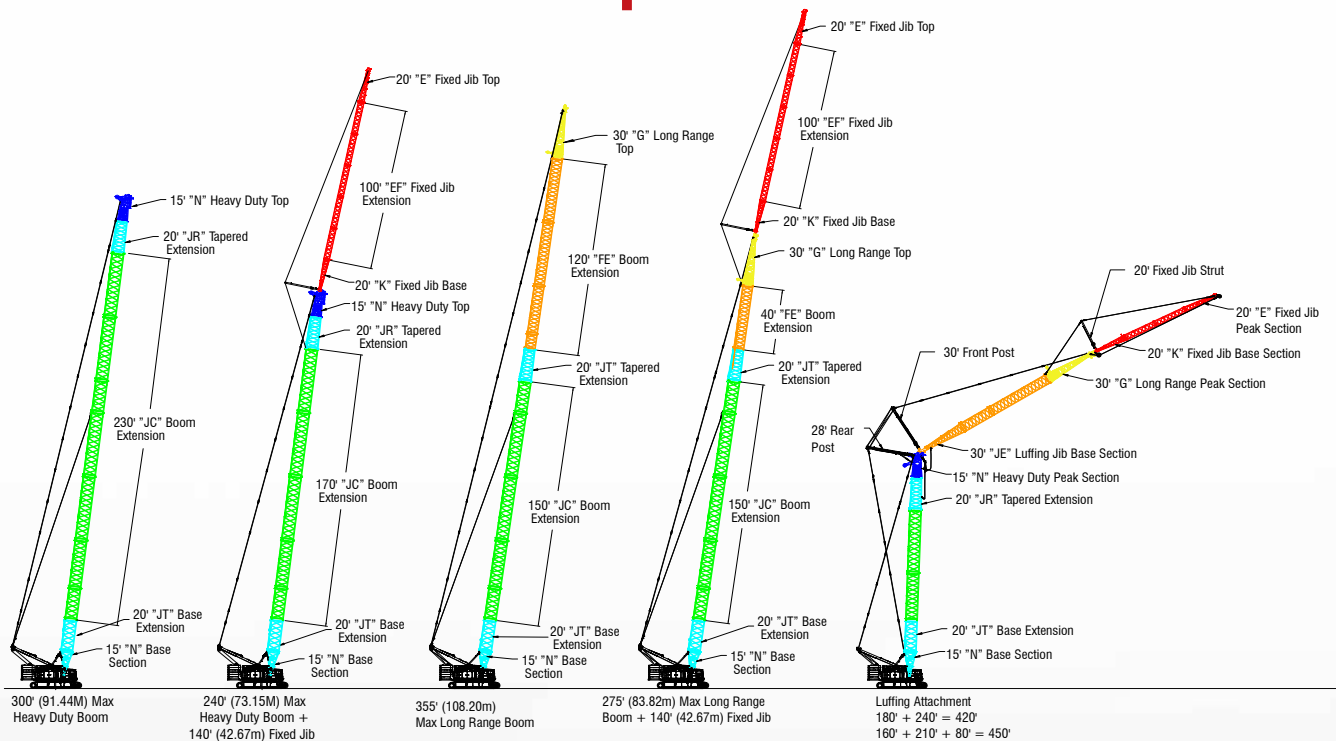
**Cellular-based data logging and monitoring system:**

- Location and operational settings
- Monitor routine maintenance intervals
- Crane and engine monitoring
- Diagnostic and fault codes
- Optional data sharing with distributor & Link-Belt for real time diagnostic

Powered by **Link-Belt PULSE**



# 348 Series 2 attachment options are versatile and strong



## Combo top

- Heavy duty polyamide sheaves and standard pin-on points
- Standard three sheave idler allows up to 3 load line over top of boom.

## Conventional tubular boom

- Provides superior strength chart capabilities
- Entire attachment made in the U.S.A.
- 70-300 ft (21.34 m - 91.44 m)
- 70 ft (21.34 m) four-piece design that utilizes 15 ft (4.57 m) base section, 20 ft (6.10 m) base extension, 20 ft (6.10 m) tapered extension, and 15 ft (4.57 m) top section
- Maximum tip height of tube boom + jib: 342 ft 3.2 in (104.32 m)
- Bar pendants
- Provides for luffing boom

## Long range boom

- Provides superior radius chart capacities
- 85 ft (25.91 m) four-piece design that utilizes a 15 ft (4.57 m) base section, 20 ft (6.10 m) base extension, 20 ft (6.10 m) tapered extension, and 30 ft (9.14 m) long range top section
- Maximum tip height of tube boom + jib: 420 ft (128.02 m)
- Bar pendants
- Provides for luffing jib extensions and top

## Luffer ready!

- Software standard
- 3rd drum optional second hoist line
- Rear drum used as luffing jib hoist

## Fixed jib

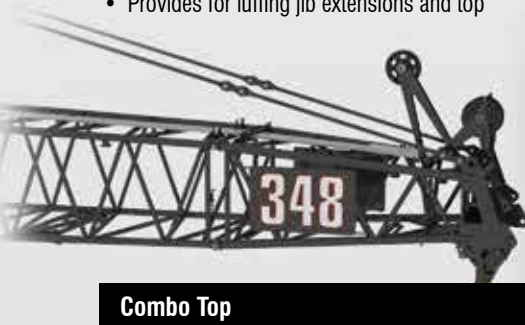
- 40 ft to 140 ft (12.19 - 42.67 m) fixed jib
- Offset angles at 5°, 15° and 30°

## Auxiliary tip extension 5 ft (1.5 m)

- Designed to provide clearance between working hoist lines
- Maximum HD boom capacity is 35 ton (31.75 mt)
- Maximum LR boom capacity is 20 ton (18.14 mt)

## Luffing boom

- Maximum luffing attachment:
  - Max luffing boom: 200 + 160 ft (60.96 + 48.77 m)
  - Max luffing jib: 180 + 240 ft (54.86 + 73.67 m)
  - Max fixed jib: 160 + 210 + 80 ft (48.77 + 64.01 m + 24.38 m)
- 497 ft (151.5 m) maximum tip height)



**Combo Top**

The combo top was designed for quick conversion to and from luffing configuration in mind.



**Auxiliary tip**

With a maximum capacity of 35 ton, the newly designed auxiliary tip extension provides excellent capacities and load line separation during 2 load line operations.



**Boom walkway**

Link-Belt's attachment features full length, wide boom walkways.



**Three-sheave idler**

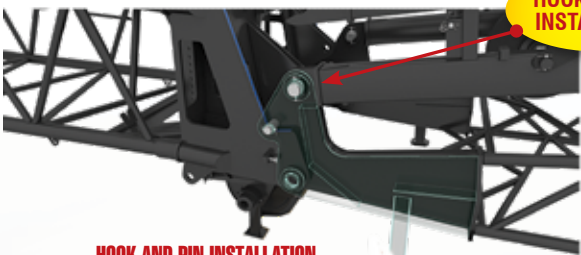
Large diameter polymer sheaves with maintenance-free sealed bearings





### LUFFING JIB TRANSPORT CONFIGURATION

The luffing jib transport configuration is a neat, compact package that includes the 30ft (9.1m) luffing jib base section along with the front and rear luffing jib posts and provides a transport height in most cases of less than 11 ft (3.4m)



### HOOK AND PIN INSTALLATION

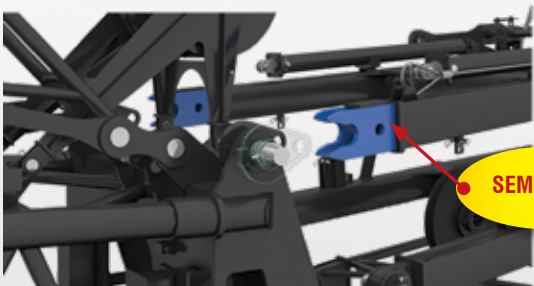
### HOOK AND PIN INSTALLATION

The luffing jib hook and pin installation procedure greatly simplifies the process for mating the luffing jib to the boom top. The hook and pin enables consistent pin hole alignment between the jib and boom top.



### TRANSFER LINKS

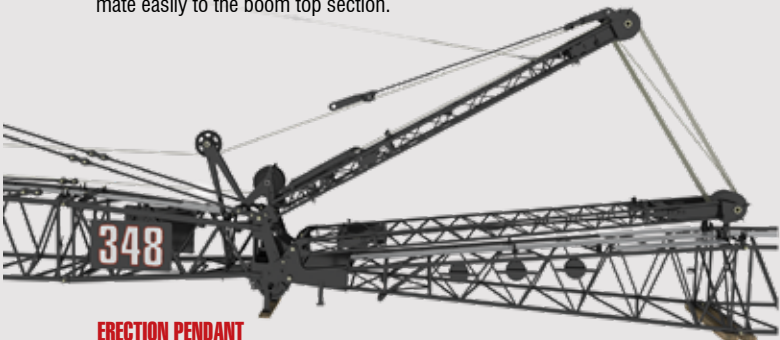
Transfer links allow for easy alignment of the rear post and the pin locations on luffing boom top section. The rear post simply rides the transfer links into pinning position.



### SEMI-BORES

### SEMI-BORES

Semi-bored weldments on rear fan post (seen in blue above) mate easily to the boom top section.



### ERECTION PENDANT

The rear post features an erection pendant that is utilized to raise and lower the rear post into position. The erection pendant stores on the rear post and minimizes work at height.

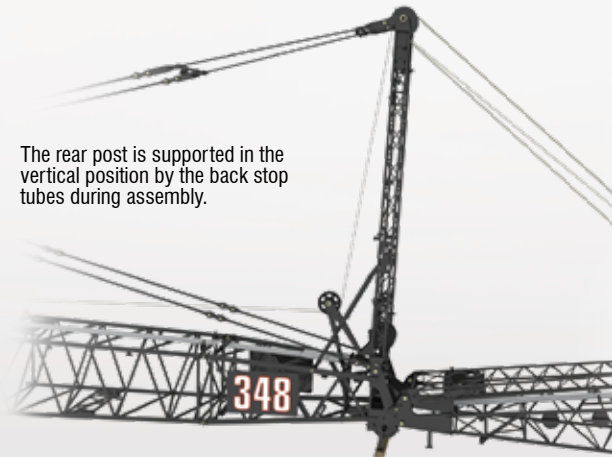
# NEW!

# Luffing erection simplified



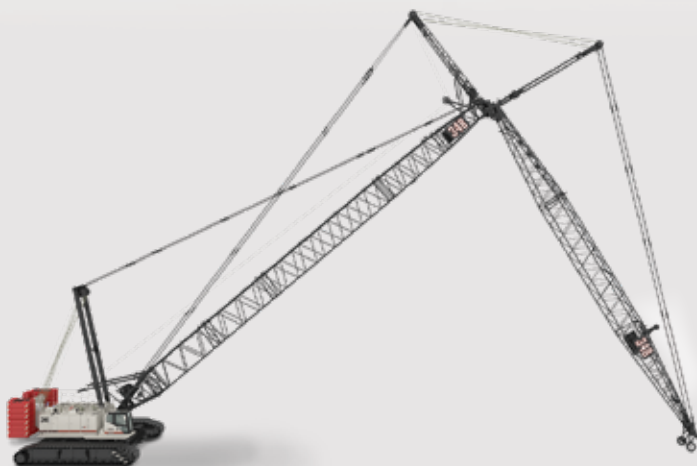
### MAKING THE CONNECTION

Connecting backstay pendant and backstop tubes is fast and easy.



The rear post is supported in the vertical position by the back stop tubes during assembly.

## EASY LIFT OFF AND TOUCH DOWN SEQUENCE





# Serviceability and access



Serviceability and access



Excellent access for all routine engine and hydraulic maintenance

## Engine

- **Smooth, quite efficient clean power with total horsepower control** provides unmatched line speeds under loads, as well as multi function ability
- Cummins QSL 9 Tier 4 Final engine
- **Operator selectable idle engine shut off** for improved fuel economy
- Cummins worldwide support

## Versatile winch package

- Matching hoist drums with 28 mm rope and **2 operating modes**
- Power up power down with **automatic brake**
- **Main and auxiliary winch** are equipped with eco mode providing high line speeds at idle engine RPMs for light loads
- **Optional** - Free fall with **Link-Belt's exclusive wet brake design** provides best feel and control of any wet brake design along with smooth performance







## Highly functional and comfortable cab

- Wide doors for easy entry
- 15,360 BTU **air-conditioning**
- 19,830 BTU **hot water heating**
- **Six-way** adjustable seat
- Easy-to-read **backlit gauges**
- Adjustable armrest console with **pilot-operated single-axis controls**
- **Hydraulic pilot controls** for variable hoist, swing and travel performance
- **Variable hydraulic output** from main pumps controlled by variable hand throttle for infinite control
- Fingertip **high speed hoist button** for front and rear drum
- Full function **rated capacity limiter** monitored by load sensing via boom hoist mounted load cell
- **AM/FM radio**
- Optional - Low-effort free-fall **hydraulic pedals**
- Optional - Boom hoist pedal

### Outstanding standard features

- **HSL capacity limiter** with high visibility color graphic display
- **Foot operated swing brake pedal**
- **Operator selectable idle engine shut off**
- **Link-Belt vision package** (3 cameras monitoring winches, rear view, and left side swing)

## Transportability and assembly

- Innovative counterweight removal system
- 13-piece upper counterweight system is designed for easy handling and blended load-outs
- Lowers counterweight to the ground
- Standard left and right catwalks easily fold-up for transport
- Main transport load with upper crane body, live mast & ropes - 98,200 lbs | 44 543 kg



Hydraulic quick disconnects for effortless hook-up



Complete counterweight removal/assembly from ground level





# Measure the Link-Belt difference.

Link-Belt's 770,822 sq. ft. (71 612 m<sup>2</sup>) manufacturing facility in Lexington, Kentucky



## Support

### Strong distributor network

Link-Belt dealers are some of the finest on the globe. Trained, skilled parts and service technicians are ready to take on your challenges and furnish the know-how that keeps your cranes ready to work.

### Dedicated parts customer support 24 hours a day, 7 days a week

- Dedicated 72,000 sq ft Parts Distribution Center
- All in-stock parts ship the same day
- Order, pack and ship with any transport option

**Link-Belt**  
CRANES  
GENUINE  
**PARTS**

**Link-Belt**  
*Preferred*

### Link-Belt Preferred delivers round-the-clock availability

- 3D eManuals - Comprehensive online library of all parts, service and operator manuals for YOUR crane
- 3DliftPlan.com – Free access for all our 3D cranes
- Interactive, live groundbearing calculations
- Comprehensive telematics support

## Voice of the customer

For advice and ideas, our engineers turn to you, our customer. Then, in a state-of-the-art facility relentlessly evolving efficiencies, those ideas evolve into cranes that dominate the market.

The benefits of Link-Belt's ceaseless efforts to improve safety, quality and environment are shared by customers and their employees.



**Dedicated parts customer support  
24 hours a day – 7 days a week**

**All in-stock parts ship the same day**

**Access to free online technical manuals and  
filter lists through Link-Belt Preferred**

**Dedicated 72,000 sq ft. Parts Distribution  
Center in Lexington, KY, USA**

**Order, pack and ship with any transport option**

**Link-Belt**  
CRANES  
Lexington, Kentucky | [www.linkbelt.com](http://www.linkbelt.com)