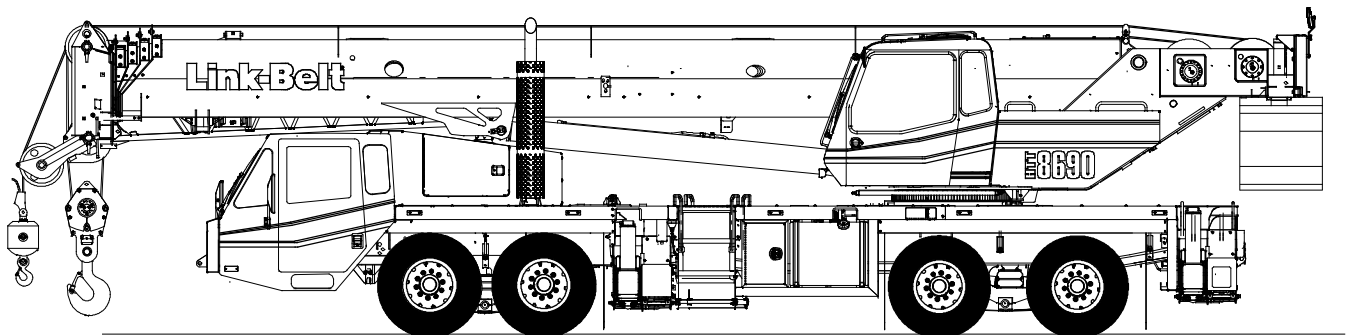


Technical Data

Specifications & Capacities

HTT 8690

Telescopic Boom Truck Crane
80.0 metric ton
CE



CAUTION: This material is supplied for reference use only. Operator must refer to in-cab Crane Rating Manual and Operator's Manual to determine allowable crane lifting capacities and assembly and operating procedures.

Table Of Contents

Boom, Attachments, and Upper Structure	1
Boom	1
Boom Wear Pads	1
Boom Head	1
Boom Elevation	1
Auxiliary Lifting Sheave – Optional	1
Hook Blocks and Balls – Optional	1
Fly – Optional	1
Fly Extensions – Optional	1
Upper Operator’s Cab and Controls	2
Swing	3
Electrical	3
Additional Equipment	3
Load Hoist System	3
Load Hoist Performance	3
2M Main and Optional Auxiliary Winches	3
Hydraulic System	4
Counterweight	4
Carrier	6
General	6
Outriggers	6
Steering and Axles	6
Suspension	6
Tires and Wheels	6
Brakes	6
Electrical	6
Engine	7
Transmission	7
Fuel Tank	7
Hydraulic System	7
Carrier Speeds and Gradeability	7
Pump Drive	7
Lower Cab and Controls	8
Additional Equipment	8
Axle Loads	9
General Dimensions	10
Working Range Diagram	11
Boom Extend Modes	12
Main Boom Lift Capacity Charts – Standard	13
3 856kg Counterweight – Fully Extended Outriggers – 360° Rotation	13
5 216kg Counterweight – Fully Extended Outriggers – 360° Rotation	14
0kg Counterweight – On Tires – Stationary – Boom Centered Over Rear	15
0kg Counterweight – On Tires – Pick & Carry (1.6km/h) – Boom Centered Over Rear	15

Main Boom Lift Capacity Charts – Optional	16
14 742kg Counterweight – Fully Extended Outriggers – 360° Rotation	16
17 917kg Counterweight – Fully Extended Outriggers – 360° Rotation	17
1 134–6 577kg Counterweight – On Tires – Stationary – Boom Centered Over Rear	18
1 134–6 577kg Counterweight – On Tires – Pick & Carry (1.6km/h) – Boom Centered Over Rear ..	18
Fly Attachment Lift Capacity Charts – Optional	19
3 856kg Counterweight – Fully Extended Outriggers – 360° Rotation	19
42.7m Main Boom Length	19
5 216kg Counterweight – Fully Extended Outriggers – 360° Rotation	19
42.7m Main Boom Length	19
14 742kg Counterweight – Fully Extended Outriggers – 360° Rotation	20
42.7m Main Boom Length	20
17 917kg Counterweight – Fully Extended Outriggers – 360° Rotation	22
42.7m Main Boom Length	22

Boom, Attachments, and Upper Structure

■ Boom

Design – Five section, formed construction of extra high tensile steel consisting of one base section and four telescoping sections. The two plate design of each section has multiple longitudinal bends for superior strength. Each telescoping section extends independently by means of one double-acting, single stage hydraulic cylinder with integrated holding valves.

Boom

- 11.6–42.7m (38–140 ft) five section boom
- Integral boom dolly connection
- Five boom extend modes (EM1 through EM5), controlled from the operator's cab, provide superior capacities by varying the extension of the telescoping sections:
 - EM1 extends to 42.7m (140.0 ft)
 - EM2 extends to 38.8m (127.3 ft)
 - EM3 extends to 35.3m (115.8 ft)
 - EM4 extends to 31.1m (102.0 ft)
 - EM5 extends to 23.3m (76.5 ft)
- Mechanical boom angle indicator
- Maximum tip height for each extend mode is:
 - EM1 is 45.1m (148 ft)
 - EM2 is 41.1m (135 ft)
 - EM3 is 37.8m (124 ft)
 - EM4 is 33.5m (110 ft)
 - EM5 is 25.6m (84 ft)

Boom Wear Pads

- Wear pads with Teflon inserts that self-lubricate the boom sections
- Bottom wear pads are universal for all boom sections
- Top wear pads are universal for all boom sections

Boom Head

- Five 419mm (16.5 in) root diameter nylon sheaves to handle up to ten parts of line
- Easily removable wire rope guards
- Rope dead end lugs on each side of the boom head
- Boom head is designed for quick-reeve of the hook block

Boom Elevation

- One double acting hydraulic cylinder with integral holding valve
- Boom elevation: -3° to 80°

Auxiliary Lifting Sheave – Optional

- Single 419mm (16.5 in) root diameter nylon sheave
- Easily removable wire rope guards
- Does not affect erection of the fly or use of the main head sheaves

Hook Blocks and Balls – Optional

- 22.7mt (25 ton) 1 sheave quick-reeve hook block with safety latch
- 45mt (50 ton) 3 sheave quick-reeve hook block with safety latch
- 70mt (77 ton) 5 sheave quick-reeve hook block with safety latch
- 90mt (100 ton) 7 sheave quick-reeve hook block with safety latch
- 8mt (8.8 ton) swivel hook ball with safety latch

Fly – Optional

- 10.7m (35 ft) one piece lattice fly, stowable, offsettable to 2° , 15° , 30° , and 45° . Maximum tip height is 55.5m (182 ft).
- 10.7–17.7m (35–58 ft) two piece bi-fold lattice fly, stowable, offsettable to 2° , 15° , 30° , and 45° . Maximum tip height is 62.5m (205 ft).

Fly Extensions – Optional

- One 4.9m (16 ft) lattice extension, equipped with two 419mm (16.5 in) root diameter nylon sheaves, to be mounted between the boom head and fly options. Maximum tip height is 67.4m (221 ft).
- Two 4.9m (16 ft) lattice extensions, one equipped with two 419mm (16.5 in) root diameter nylon sheaves, to be mounted between the boom head and fly options. Maximum tip height is 72.2m (237 ft). Minimum of 6 577.1kg (14,500 lb) of counterweight required.

■ Upper Operator's Cab and Controls

Environmental Cab – Fully enclosed, one person cab of galvanneal steel structure with acoustical insulation.

Equipped with:

- Tinted and tempered glass windows
- Extra—large fixed front window with windshield wiper and washer
- Roof window with windshield wiper
- Sliding left side door with large fixed window
- Sliding rear and right side windows for ventilation
- Six way adjustable, cushioned seat with seat belt and storage compartment
- Diesel fired warm—water heater with air ducts for front windshield defroster and cab floor
- Defroster fan for the front window
- Bubble level
- Circulating fan
- Adjustable sun visor
- Dome light
- Cup holder
- Left side viewing mirror
- Pull—out cabwalk
- Two position travel swing lock

Air Conditioning – Optional – Integral with cab heating system utilizing the same ventilation outlets

Armrest Controls – Two dual axis hydraulic joystick controllers or optional single axis hydraulic controllers for:

- Swing
- Boom hoist
- Main rear winch
- Auxiliary front winch – optional
- Drum rotation indication
- Drum rotation indicator activation switch
- Swing park brake switch
- Winch high/low speed and disable switch(es)
- Counterweight handling switch
- Warning horn button
- Third wrap/first layer calibration switches

Outrigger Controls – Hand held control box with umbilical cord gives the operator the freedom to view operation while setting the outriggers.

Foot Controls

- Boom telescope
- Swing brake
- Engine throttle

Right Front Console – Controls and indicators for:

- Engine ignition
- Engine throttle lock
- Pump enable
- Function disable
- Front windshield wiper and washer
- Cab floodlights
- Warning horn
- Heating controls
- Console dimmer switch
- Bubble level
- 12 volt power connection
- Emergency stop switch
- Air conditioning – optional
- Boom floodlight – optional
- Rotating beacon or strobe light – optional
- Wait to start indicator
- Engine warning lamps

Cab Instrumentation – Ergonomically positioned, analog instrumentation for crane operation including:

- Check and stop engine indicators
- Low air pressure warning indicator
- Swing park brake indicator
- Engine coolant temperature with warning indicator
- Hydraulic oil temperature with warning indicator
- Fuel level with warning indicator
- Tachometer
- Swing park brake indicator

Rated Capacity Limiter – Microguard 540 color graphic audio—visual warning system integrated into the dash with anti—two block and function limiter. Operating data available includes:

- Crane configuration
- Boom length and angle
- Boom head height
- Allowed load and % of allowed load
- Boom angle
- Radius of load
- Actual load
- Counterweight removal
- Operator settable alarms (include):
 - Maximum and minimum boom angles
 - Maximum and minimum tip height
 - Maximum boom length
 - Left/right swing positions
 - Operator defined area (imaginary plane)

Integrated Third Wrap Indicator with Kickout – Micro-guard color display visually and audibly warns the operator when the wire rope is on the first/bottom layer and provides a function kickout when the wire rope is down to the last three wraps.

Internal RCL Light Bar – Optional – Visually informs the operator when crane is approaching maximum load capacity with a series of green, yellow, and red lights.

External RCL Light Bar – Optional – Visually informs the ground crew when crane is approaching maximum load capacity with a series of green, yellow, and red lights.

■ Swing

Motor/Planetary – Bi-directional hydraulic swing motor mounted to a planetary reducer for 360° continuous smooth swing at 1.7 rpm.

Swing Park Brake – 360°, electric over hydraulic, (spring applied/hydraulic released) multi-disc brake mounted on the speed reducer. Operated by a switch from the operator's cab.

Swing Brake – 360°, foot operated, hydraulic applied disc brake mounted to the speed reducer.

Swing Lock – Two-position swing lock (boom over front or rear) operated from the operator's cab.

■ Electrical

Swing Alarm – Audio warning device signals when the upper is swinging.

Lights

- Two working lights on front of the cab
- One rotating amber beacon on top of the cab – optional
- One amber strobe beacon on top of the cab – optional
- Boom floodlight – optional

■ Additional Equipment

- Left side aluminum storage box

■ Load Hoist System

Load Hoist Performance

Main (Rear) and Auxiliary (Front) Winches – 19mm (3/4 in) Rope										
Layer	Maximum Line Pull		Normal Line Speed		High Line Speed		Layer		Total	
	kN	lb	m/min	ft/min	m/min	ft/min	m	ft	m	ft
1	75.09	16,880	54.6	179	108.5	356	34.7	114	34.7	114
2	69.03	15,519	59.4	195	118.0	387	37.8	124	72.5	238
3	63.89	14,362	64.3	211	127.4	418	40.8	134	113.4	372
4	59.45	13,365	68.9	226	136.9	449	43.9	144	157.3	516
5	55.59	12,497	73.8	242	146.3	480	46.9	154	204.2	670
6	---	---	---	---	---	---	50.0	164	254.2	834

Wire Rope Application		Diameter		Type	Maximum Permissible Load	
		mm	in		kN	lb
Main (Rear) Winch	Standard	19	3/4	18x19 rotation resistant – right regular lay (Type RB)	57.65	12,960
	Optional	19	3/4	36x7 rotation resistant – right regular lay (Type ZB)	69.48	15,619
Auxiliary (Front) Winch	Standard	19	3/4	18x19 rotation resistant – right regular lay (Type RB)	57.65	12,960
	Optional	19	3/4	36x7 rotation resistant – right regular lay (Type ZB)	69.48	15,619

2M Main and Optional Auxiliary Winches

- Axial piston, full and half displacement (2-speed) motors driven through planetary reduction unit for positive control under all load conditions.
- Grooved lagging
- Power up/down mode of operation
- Hoist drum cable follower
- Drum rotation indicator
- Drum diameter: 406.4mm (16 in)
- Rope length:
 - Main: 222.5m (730 ft)
 - Auxiliary: 182.9m (600 ft) or 222.5m (730 ft)
- Maximum rope storage: 254.2m (834 ft)
- Terminator style socket and wedge

■ Hydraulic System

All circuits of the hydraulic system are pressure compensated.

Counterbalance Valves – All hoist motors, boom extend cylinders, and boom hoist cylinders are equipped with counterbalance valves to provide load lowering and to prevent accidental load drop if hydraulic power is suddenly reduced.

Hydraulic Oil Cooler – One carrier mounted cooler removes heat from the hydraulic oil. The cooler is mounted in left side access ladder.

■ Counterweight

Standard – Total of 5 216kg (11,500 lb) of total counterweight consisting of three, hydraulically removable counterweights. Assembled and disassembled by hydraulic cylinders controlled from the operator's cab with capacities for:

- 0kg (0 lb) counterweight
- 1 134.0kg (2,500 lb) counterweight
- 2 494.8kg (5,500 lb) counterweight
- 3 855.5kg (8,500 lb) counterweight
- 5 216.3kg (11,500 lb) counterweight

Optional – 6 803.9kg (15,000 lb) in addition to standard counterweight for a total of 12 020.2kg (26,500 lb) with additional capacities for:

- 6 577.1kg (14,500 lb) counterweight
- 9 298.6kg (20,500 lb) counterweight
- 10 659.4kg (23,500 lb) counterweight
- 12 020.2kg (26,500 lb) counterweight

Optional – 9 525.4kg (21,000 lb) in addition to standard counterweight for a total of 14 741.8kg (32,500 lb) with additional capacities for:

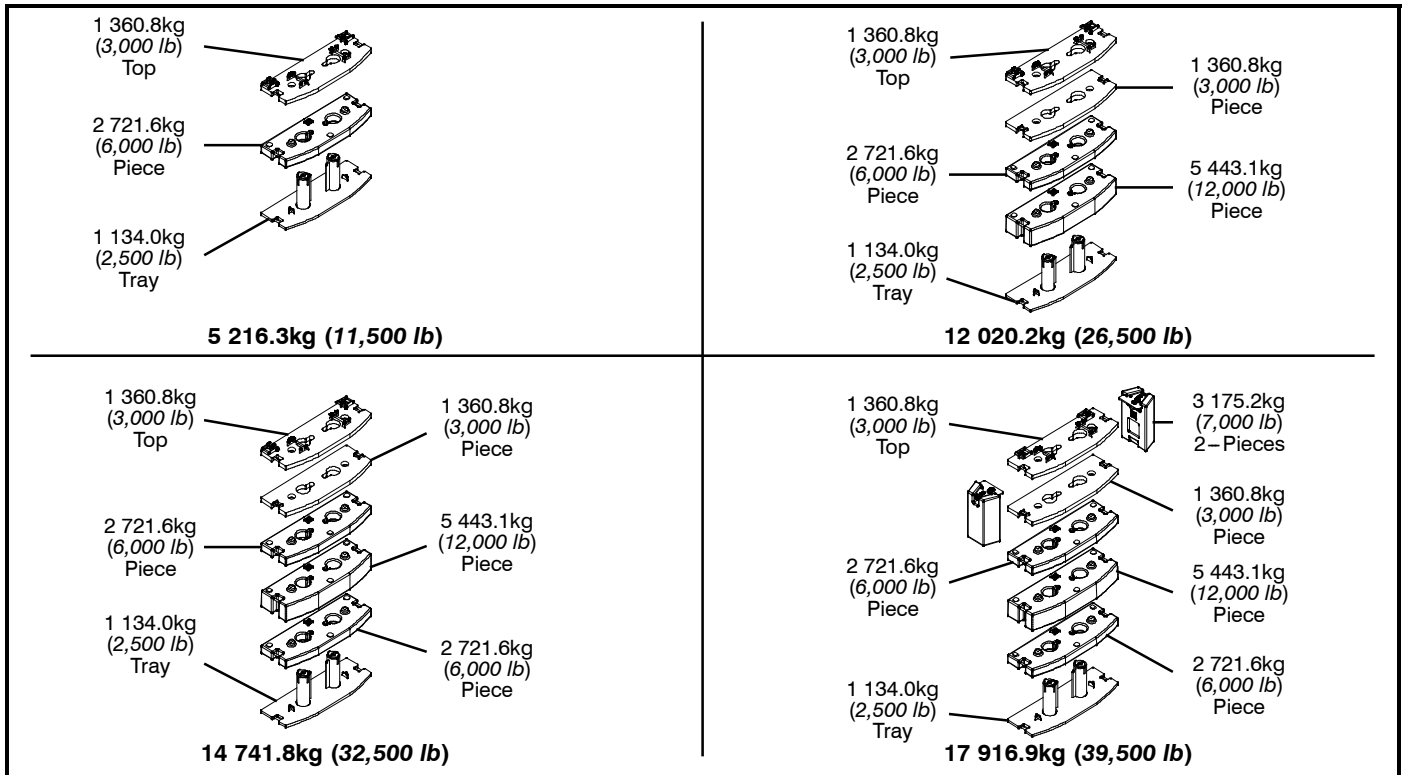
- 6 577.1kg (14,500 lb) counterweight
- 7 937.9kg (17,500 lb) counterweight
- 9 298.6kg (20,500 lb) counterweight
- 10 659.4kg (23,500 lb) counterweight
- 12 020.2kg (26,500 lb) counterweight
- 13 381.0kg (29,500 lb) counterweight
- 14 741.8kg (32,500 lb) counterweight

Optional – 12 700.6kg (28,000 lb) in addition to standard counterweight for a total of 17 916.9kg (39,500 lb) with additional capacities for:

- 6 577.1kg (14,500 lb) counterweight
- 7 937.9kg (17,500 lb) counterweight
- 9 298.6kg (20,500 lb) counterweight
- 10 659.4kg (23,500 lb) counterweight
- 12 020.2kg (26,500 lb) counterweight
- 13 381.0kg (29,500 lb) counterweight
- 14 741.8kg (32,500 lb) counterweight
- 17 916.9kg (39,500 lb) counterweight*

Limited low speed jobsite travel is offered for every counterweight configuration except 17 916kg (39,500 lb) and a boom dolly or boom trailer may be required for on-highway travel.

* Overall width of the crane increases to 3.4m (11 ft) for this counterweight configuration



Counterweight Packages		5 216.3kg (11,500 lb) – Standard						
		12 020.2kg (26,500 lb) – Optional						
Counterweight Modules		14 741.8kg (32,500 lb) – Optional						
		17 916.9kg (39,500 lb) – Optional						
		1 134.0kg (2,500 lb) Tray	2 721.6kg (6,000 lb) Piece	1 360.8kg (3,000 lb) Top	1 360.8kg (3,000 lb) Piece	5 443.1kg (12,000 lb) Piece	2 721.6kg (6,000 lb) Piece	3 175.2kg (7,000 lb) 2-Pieces
Counterweight Usage Configurations	0kg (0 lb)							
	1 134.0kg (2,500 lb)	X						
	2 494.8kg (5,500 lb)	X		X				
	3 855.5kg (8,500 lb)	X	X					
	5 216.3kg (11,500 lb)	X	X	X				
	6 577.1kg (14,500 lb)	X	X	X	X			
	7 937.9kg (17,500 lb)	X	X	X			X	
	9 298.6kg (20,500 lb)	X	X	X	X		X	
	10 659.4kg (23,500 lb)	X	X	X		X		
	12 020.2kg (26,500 lb)	X	X	X	X	X		
	13 381.0kg (29,500 lb)	X	X	X		X	X	
	14 741.8kg (32,500 lb)	X	X	X	X	X	X	
17 916.9kg (39,500 lb)	X	X	X	X	X	X	X	

Carrier

■ General

- 2.59 m (8 ft 6 in) wide
- 7.26m (23 ft 10 in) wheelbase (centerline of first axle to centerline of fourth axle)
- **Frame** – Box–type, torsion resistant, welded construction made of high tensile steel. Equipped with front and rear towing and tie–down lugs, tow connections, and access ladders.

■ Outriggers

Boxes – Two double box, front and rear welded to the carrier frame

Beams and Jacks – Four dual stage beams with Confined Area Lifting Capacities (CALC) provide selectable outrigger extensions of full, intermediate, and retracted positions. Jacks with integral check valves, hydraulically controlled from the operator's cab and on both sides of carrier. A fifth front bumper outrigger with integral check valves is hydraulically controlled from the operator's cab and at the front bumper of carrier.

Pontoons – Four lightweight, stow'n go, 59.7 x 69.2cm (23.5 x 27.25 in) hexagonal steel pontoons with a contact area of 3 129cm² (485 in²) can be stored for road travel in either the storage racks on the carrier or under the outrigger boxes.

Main Jack Reaction – 48 080.8kg (106,000 lb) force and 1 496.2kPa (217 psi) ground bearing pressure

■ Steering and Axles

- Sheppard full integral master gear/slave gear steering system provides hydraulic assisted steering with mechanical link between steering wheel and wheels

On Road (Primary) Steering Mode – Axles 3 and 4 will automatically steer in combination with axles 1 and 2 within seven degrees with ONROAD selected based on travel speeds.

On Road (Primary)		
Speed	Less than 24km/h (15 mph)	Greater than 24km/h (15 mph)
Axle 1	Steered	Steered
Axle 2	Steered	Steered
Axle 3	Steered	Locked
Axle 4	Steered	Locked

Off Road (Auxiliary) Steering Modes – Four independent modes consisting of:

- **Independent Front:** Axles 1 and 2
- **Combination:** Axles 1, 2, 3, and 4
- **Crab:** Axles 1, 2, 3, and 4
- **Independent Rear:** Axles 3 and 4

The front, combination, and crab steering modes are controlled from the steering wheel and are selected by controls in the driver's cab. Momentary switches located in the driver's cab control the rear steering mode.

- **Emergency Steering** – A pump is flange–mounted to the transmission and provides hydraulic pressure to the steering circuit as long as the crane is in motion.
- **Drive** – 8 x 4 for on/off highway travel
- **Axle 1 & 2** – Tandem steered, non–driven
- **Axle 3 & 4** – Electronically steered, driven with reduction 6.35 to 1.
- **Inter–Axle Differential Lock** – Traction adding device that locks axle 3 and axle 4. Operated by a switch from the carrier cab.
- **Transverse (Cross–Axle) Differential Locks** – Traction adding device that locks differentials within axles 3 and 4. Operated by a switch from the carrier cab.

■ Suspension

Front – Raydan Air Link walking beam air suspension

Rear – Raydan Air Link walking beam air suspension

■ Tires and Wheels

Front – Four (single) 445/65R22.5 tires on aluminum disc wheels

Rear – Four (single) 445/65R22.5 tires on aluminum disc wheels

- Spare tires and wheels – optional
- Tire inflation kit – optional

■ Brakes

Service – Full air anti–lock (ABS) brakes on all wheel ends. Dual circuit compressed air system with air dryer.

Parking/Emergency – Spring loaded type, acting on 3rd and 4th axles.

■ Electrical

Battery – Three batteries provide 12 volt starting and operation

Lights

- Front lighting includes two main headlights, two high beam lights, two parking and two directional indicators.
- Side lighting includes six marker and a directional indicator per side.
- Rear lighting includes two marker, two directional indicators, two parking/brake lights, two reverse lights, two license plate lights, and fog lamps.
- Other equipment includes hazard/warning system, cab light, instrument panel light, and signal horn.
- One amber strobe or rotating beacon on top of the cab – optional

■ Engine

Specification	Cummins QSX
Emissions Compliance Level:	Euro III ⁽¹⁾
Maximum Allowable Sulfur Content of Fuel (PPM):	5000
Numbers of cylinders:	6
Cycle:	4
Bore and Stroke: mm (<i>inch</i>)	137x169 (5.39 x 6.65)
Piston Displacement: L (<i>in³</i>)	15.0 (915)
Max. Brake Horsepower: kW (<i>hp</i>)	358 (480) @ 1,800 rpm 335.6 (450) @ 2,100 rpm
Peak Torque: Nm (<i>ft lb</i>)	2 101.5 (1,550) @ 1,200 rpm
Alternator: volts – amps	12 – 135
Crankcase Capacity: L (<i>qt</i>)	49.21 (52)
<ul style="list-style-type: none"> • Cruise control • Three-stage engine compression brake • Thermostatically controlled, hydraulically driven radiator fan • Engine block heater 	
(1) Complies with EU Stage IIIA standards effective January 2007.	

■ Transmission

Automated – ZF AS-TRONIC (no clutch pedal) manual transmission with 12 forward gears and 2 reverse gears.

■ Fuel Tank

One 302.8L (80 gal) capacity tank

■ Hydraulic System

All functions are hydraulically powered allowing positive, precise control with independent or simultaneous operation of all functions.

Main Pumps

- Three fixed displacement gear pumps with automatic disconnect for the main and auxiliary winches, swing, boom hoist, control circuit, and telescope for use when pick & carry switch is in travel mode.
- One fixed displacement gear pump for steering and the front bumper outrigger
- Three fixed displacement vane pumps for engine cooling fan and main outriggers. These pumps also provide flow to the winches and boom hoist for “pick & carry” mode. Operated by a switch in the carrier cab.
- Combined pump capacity of 753Lpm (199 gpm)
- One transmission mounted, ground driven pump for emergency steering

Hydraulic Reservoir – 545.1L (144 gal) capacity equipped with sight level gauge. Diffusers built in for deaeration.

Filtration – One 10 micron, full flow, return line filter. All oil is filtered prior to return to reservoir. Accessible for easy filter replacement.

■ Carrier Speeds and Gradeability

ZF Astronic		Governed Speed		Gradeability (@ Peak Torque)
Gear	Ratio	km/h	mph	% Grade
				Tier III/ Stage IIIA
12th	0.78	90.21	55.93	2.77
11th	1.00	70.18	43.51	3.96
10th	1.27	55.39	34.34	5.32
9th	1.63	43.08	26.71	7.12
8th	2.10	33.41	20.71	9.44
7th	2.70	25.99	16.12	12.36
6th	3.55	19.76	12.25	16.49
5th	4.57	15.37	9.53	21.40
4th	5.78	12.13	7.52	27.29
3rd	7.44	9.44	5.85	35.27
2nd	9.59	7.32	4.54	45.68
1st	12.33	5.69	3.53	58.90
Reverse 1	11.41	6.15	3.81	54.49
Reverse 2	8.88	7.90	4.90	42.25

Based on a gross vehicle weight of 43 091.3kg (95,000 lb)

■ Pump Drive

All pumps are mechanically driven by the diesel engine. Main and auxiliary winches, swing, boom hoist, control circuit, and telescope pumps are mounted to an automatic pump disconnect on the rear of the transmission to aid in cold weather starting as well as to reduce pump wear while traveling.

■ Lower Cab and Controls

Environmental Cab – Fully enclosed, one person cab of composite structure with acoustical insulation. Equipped with:

- Tinted and tempered glass windows
- Roll down left side window for ventilation
- Sliding rear and right side windows for ventilation
- Windshield wiper and washer
- Six way adjustable and air suspended driver's seat with seat belt
- Two adjustable rear view mirrors
- Engine dependent warm–water heater with air ducts for windshield defroster and cab floor
- Adjustable sun visor
- Dome light
- 12 volt connection

Air Conditioning – Integral with cab heating system utilizing the same ventilation outlets

Cab Instrumentation – Ergonomically positioned analog instrumentation for driving including:

- Speedometer with odometer, hourmeter, trip odometer, and clock
- Front and rear air pressure with warning indicator
- Engine coolant temperature with warning indicator
- Engine oil pressure with warning indicator
- Voltage indicator with warning indicator
- Fuel level
- Tachometer
- Tachograph

Right Side Console – Controls and indicators for:

- Transmission gear shifting
- Transmission digital readout
- Cruise controls
- Engine compression brake controls
- Rear steer axle lock switch
- Rear axle steering switch
- Rear steer electronic control panel
- Emergency stop switch
- Park brake

Dash Mounted Controls For:

- Carrier lights
- Carrier/upper throttle control
- Engine cooling fan override
- Cab heater/air conditioning
- Console dimmer switch
- Park brake
- Pick & carry switch
- Anti–lock brake diagnostic switch
- Inter–axle differential lock switch
- Fog lights

Dash Mounted Indicator For:

- Check engine, stop engine, engine warning, and wait to start
- Turn signal indication
- Tachograph warning indicator
- Park brake
- Cruise activation
- High beam headlights
- Check anti–lock brake system
- Check anti–lock trailer brake system
- Front and rear primary steer failure indicator
- Low level hydraulic oil indicator
- Inter–axle differential lock indicator
- Seat belt indicator
- Transaxle (cross–axle) differential lock indicator

Steering Column Controls For:

- Engine ignition
- Warning horn
- Turn indicators
- High beam headlights
- Steering wheel adjustments
- Intermittent windshield wiper and washer
- Hazard lights

Foot Controls For:

- Carrier service brakes
- Engine throttle

■ Additional Equipment

Standard:

- Aluminum full deck fenders with mud flaps
- Left and right bubble levels
- Air hose connection ports
- Fire extinguisher
- Left side aluminum storage box

Optional:

- Pneumatic and electrical quick disconnect connectors mounted on the rear for trailer or boom dolly brakes and lights
- Rear mounted pintle hook

Axle Loads

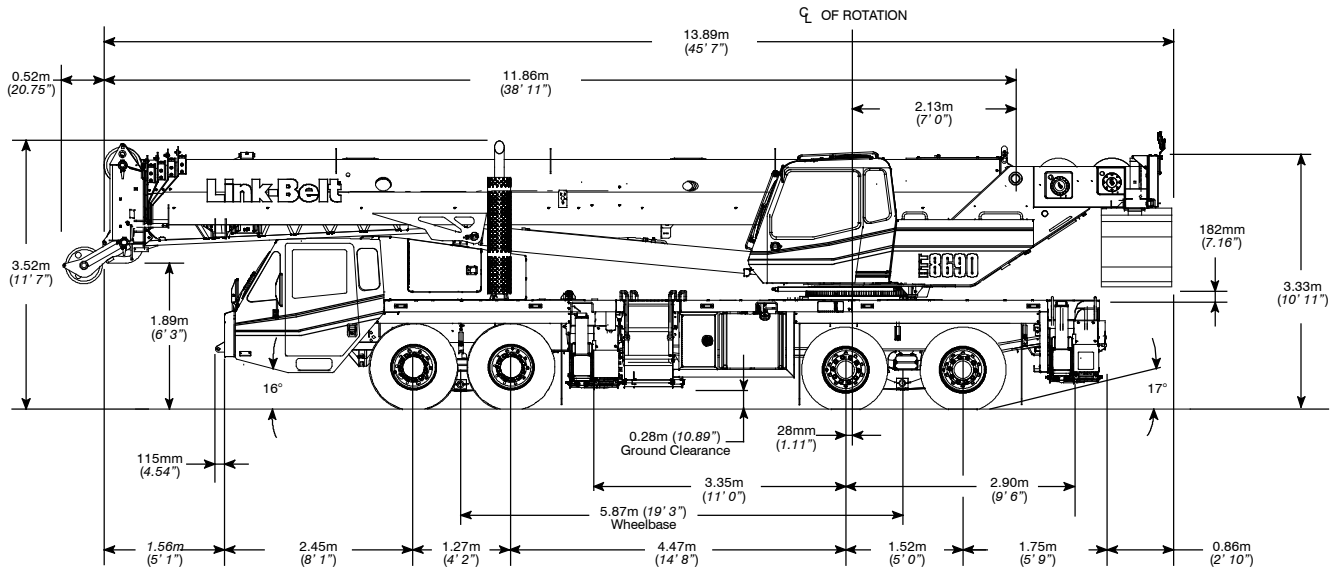
Base crane with full tank of fuel and no counterweight	Gross Vehicle Weight (¹)		Front Axles		Rear Axles	
	kg	lb	kg	lb	kg	lb
	36 643	80,784	16 444	36,253	20 199	44,532
Driver in carrier cab	113	250	143	315	-29	-65
Rear pintle hook	14	32	-6	-14	21	46
Pneumatic and electrical connectors for trailer or boom dolly	11	23	-4	-10	15	33
Carrier aluminum storage box	27	59	13	28	14	31
Air ride lift system – rear axles	22	48	0	0	22	48
Ether injection	6	13	5	12	1	1
Air conditioning – carrier	20	45	25	55	-4	-10
Hoist drum follower – main	31	69	-16	-35	47	104
Auxiliary winch with 182.9m (600 ft) of 19mm (3/4”) type “RB” rope	332	731	-108	-239	440	970
Hoist drum follower – auxiliary	31	69	-10	-21	41	90
Substitute 182.9m (600 ft) of rope with 222.5m (730 ft) of rope – auxiliary	74	163	-24	-54	98	217
Remove 222.5m (730 ft) of rope from rear (main) winch	-422	-931	169	373	-591	-1,304
Remove 182.9m (600 ft) of rope from front (auxiliary) winch	-348	-768	114	252	-463	-1,020
Upper aluminum storage box	15	32	-1	-3	16	35
Air conditioner – operator’s cab	78	173	-9	-20	87	193
360° mechanical swing lock	64	140	9	21	54	119
1 134.0kg (2,500 lb) counterweight tray on upper	1 154	2,544	-569	-1,255	1 723	3,799
1 360.8kg (3,000 lb) counterweight on upper	1 352	2,981	-667	-1,471	2 019	4,452
2 721.6kg (6,000 lb) counterweight on upper	2 722	6,000	-1 343	-2,961	4 065	8,961
2 721.6kg (6,000 lb) counterweight on upper	2 722	6,000	-1 343	-2,961	4 065	8,961
5 443.1kg (12,000 lb) counterweight on upper	5 466	12,050	-2 697	-5,947	8 163	17,997
1 360.8kg (3,000 lb) top counterweight on upper	1 365	3,009	-674	-1,485	2 038	4,494
Floodlight to the front of boom base section	3	7	3	6	1	1
Fly mounting brackets to boom base section for fly options	80	176	62	136	18	40
10.7m (35 ft) offsettable, one-piece lattice fly – stowed	722	1,591	698	1,539	24	52
10.7–17.7m (35–58 ft) offsettable, two-piece (bi-fold) lattice fly – stowed	1 027	2,263	856	1,886	171	377
Auxiliary lifting sheave	50	110	91	200	-41	-90
22.7mt (25 ton) 1–sheave hook block at front bumper	340	750	532	1,172	-191	-422
45mt (50 ton) 3–sheave hook block at front bumper	466	1,027	728	1,605	-262	-578
70mt (75 ton) 5–sheave hook block at front bumper	635	1,400	992	2,188	-357	-788
90mt (100 ton) 7–sheave hook block at front bumper	771	1,700	1 205	2,657	-434	-957
8mt (8.8 ton) hook ball at front bumper	244	538	381	841	-137	-303

Counterweight Load Transfer	Front Axles		Rear Axles	
	kg	lb	kg	lb
Transfer 1 134.0kg (2,500 lb) counterweight tray to carrier deck	1 449	3,194	-1 449	-3,194
Transfer 1 360.8kg (3,000 lb) counterweight to carrier deck	1 697	3,742	-1 697	-3,742
Transfer 2 721.6kg (6,000 lb) counterweight to carrier deck	3 416	7,532	-3 416	-7,532
Transfer 2 721.6kg (6,000 lb) counterweight to carrier deck	3 416	7,532	-3 416	-7,532
Transfer 5 443.1kg (12,000 lb) counterweight to carrier deck	6 862	15,128	-6 862	-15,128
Transfer 1 360.8kg (3,000 lb) top counterweight to carrier deck	1 714	3,778	-1 714	-3,778

Axle	Maximum Load @ 105km/h (65 mph)
Front	21 047kg (46,400 lb) – aluminum disc wheels with 445/65R22.5 tires
Rear	23 224kg (51,200 lb) – aluminum disc wheels with 445/65R22.5 tires

(¹) Adjust gross vehicle weight and axle loading according to component weight. All weights are ±3%.

General Dimensions

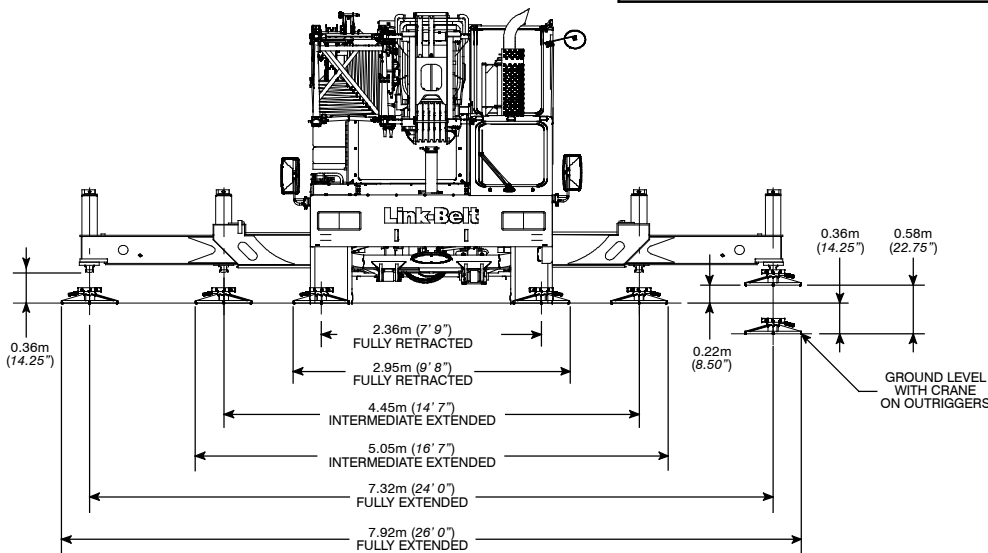


Turning Radius – Front Wheel (8x4) Steering	Metric	English
Wall to wall over carrier	14.7m	48' 4"
Wall to wall over boom	15.0m	49' 2"
Wall to wall over boom attachment	15.5m	51' 0"
Curb to curb	13.4m	44' 1"
Centerline of tire	13.2m	43' 4"

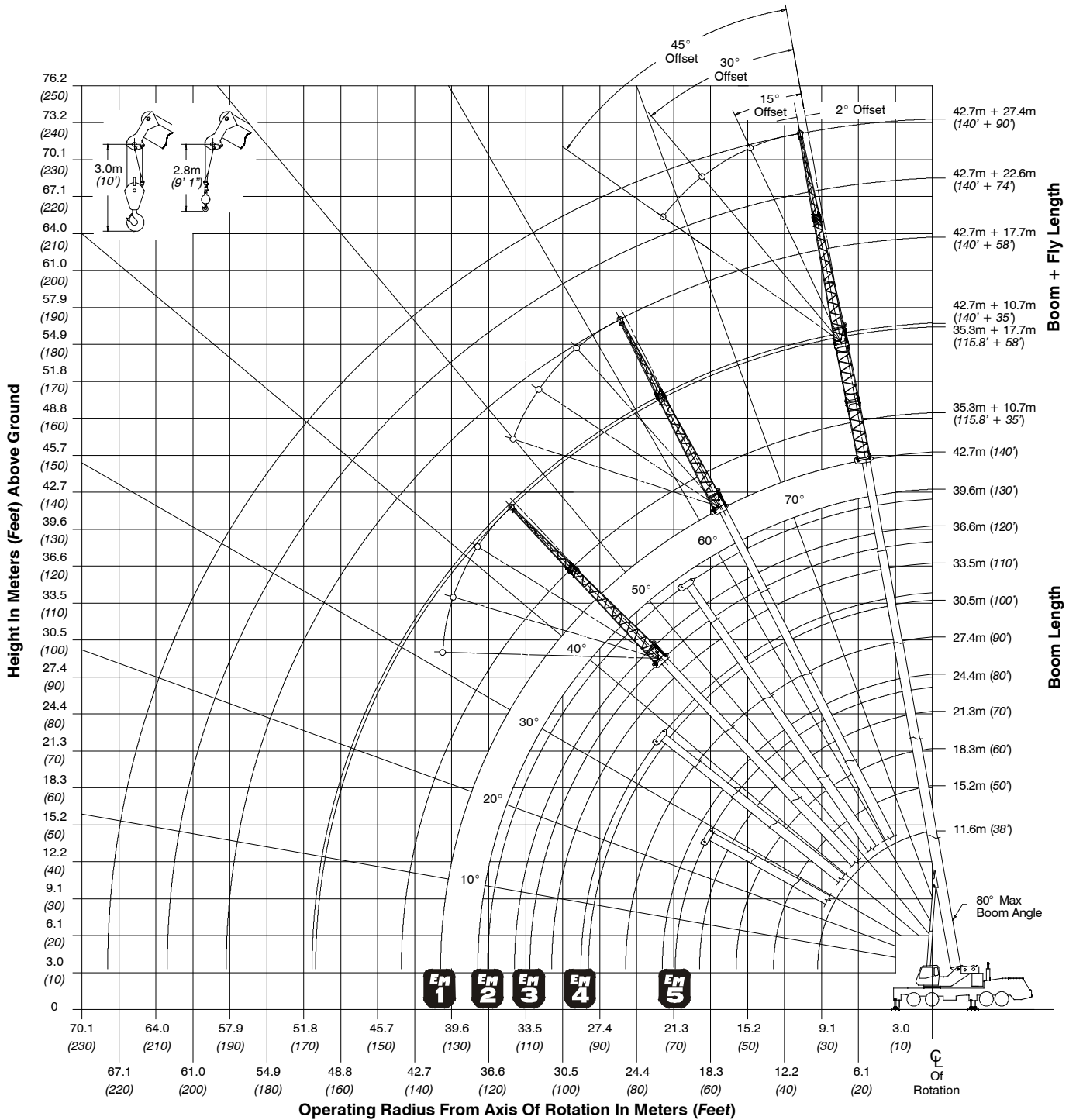
Turning Radius – All Wheel (8x8) Steering	Metric	English
Wall to wall over carrier	10.0m	32' 9"
Wall to wall over boom	10.4m	34' 1"
Wall to wall over boom attachment	10.9m	35' 8"
Curb to curb	8.6m	28' 4"
Centerline of tire	8.4m	27' 7"

Tail Swing	Metric	English
With counterweight	4.2m	13' 8"
Without counterweight	4.0m	13' 1"

Overall Width	Metric	English
With up to 32,500 lb (14 741.8kg) counterweight	2.6m	8' 6"
With 39,500 lb (17 916.9kg) counterweight	3.4m	11' 0"

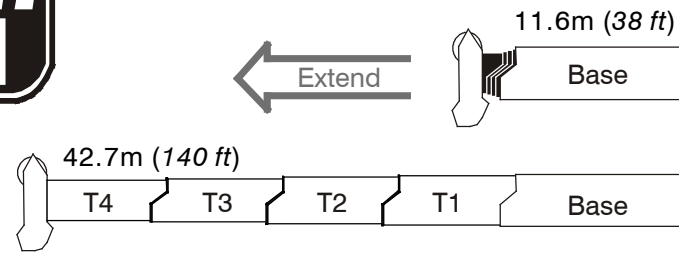


Working Range Diagram

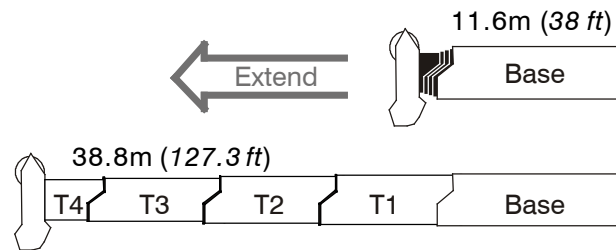


Boom Extend Modes

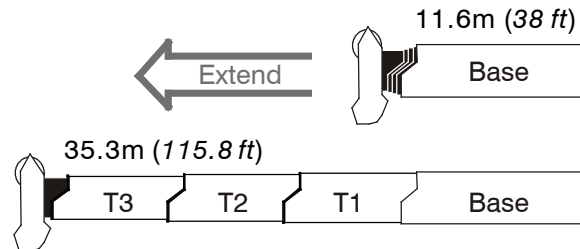
Boom Length		Section Length			
m	ft	T4	T3	T2	T1
15.2	50	50%			
18.3	60	91%			
21.3	70	100%	31%		
24.4	80	100%	71%		
27.4	90	100%	100%	11%	
30.5	100	100%	100%	49%	
33.5	110	100%	100%	88%	
36.6	120	100%	100%	100%	25%
39.6	130	100%	100%	100%	63%
42.7	140	100%	100%	100%	100%



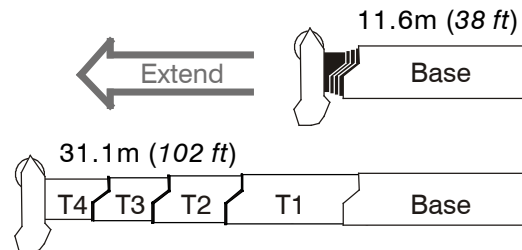
Boom Length		Section Length			
m	ft	T4	T3	T2	T1
15.2	50	48%	2%		
18.3	60	48%	42%		
21.3	70	48%	82%		
24.4	80	48%	100%	21%	
27.4	90	48%	100%	60%	
30.5	100	48%	100%	98%	
33.5	110	48%	100%	100%	35%
36.6	120	48%	100%	100%	73%
38.8	127.3	48%	100%	100%	100%



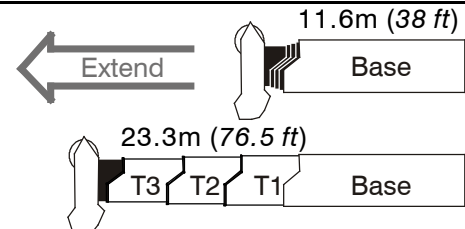
Boom Length		Section Length			
m	ft	T4	T3	T2	T1
15.2	50	0%	48%		
18.3	60	0%	88%		
21.3	70	0%	100%	27%	
24.4	80	0%	100%	65%	
27.4	90	0%	100%	100%	4%
30.5	100	0%	100%	100%	41%
35.3	115.8	0%	100%	100%	100%



Boom Length		Section Length			
m	ft	T4	T3	T2	T1
15.2	50	48%	2%		
18.3	60	48%	42%		
21.3	70	48%	51%	30%	
24.4	80	48%	51%	50%	18%
27.4	90	48%	51%	50%	55%
31.1	102	48%	51%	50%	100%



Boom Length		Section Length			
m	ft	T4	T3	T2	T1
15.5	50.7	0%	51%		
19.4	63.7	0%	51%	50%	
23.3	76.5	0%	51%	50%	48%



Main Boom Lift Capacity Charts – Standard

3 856kg Counterweight – Fully Extended Outriggers – 360° Rotation																	
(All Capacities Are Listed In Kilograms)																	
Radius (m)	Boom Length (m)																Radius (m)
	11.58	15.2/15.5	18.3	19.4	21.3	23.32	24.4	27.4	30.5	31.09	33.5	35.3	36.6	38.8	39.6	42.67	
3	70 800	69 550*	43 700	53 450	40 850												3
3.5	61 350	62 250*	41 500	50 350	39 100												3.5
4	53 500	54 450*	38 900	48 900	37 450	37 400	32 200										4
4.5	47 250	48 250*	36 550	48 350	35 950	35 750	30 950	26 150									4.5
5	42 200	43200	34 600	43 400	34 600	35 250	29 450	26 150									5
6	34 500	35 550*	31 050	35 750	32 150	34 700	28 950	25 450	22 250	21 100	19 250						6
7	28 000	29 350*	28 200	29 600	30 000	29 250	28 950	25 200	21 150	20 900	19 250						7
8	21 400	23 150	23 650	23 050	23 750	22 750	23 600	23 300	20 100	20 650	18 800	16 400	14 950	13 400	12 150		8
9	16 950	18 700	19 150	18 550	19 250	18 300	19 150	18 900	18 850	18 650	17 550	16 250	14 200	13 300	12 000	11 050	9
10		15 500	15 950	15 400	16 300	15 150	16 150	16 350	15 800	15 450	16 100	15 400	14 050	13 200	11 900	10 950	10
12		11 100	11 850	11 100	12 200	10 900	12 350	12 000	12 400	11 200	12 300	11 150	12 150	11 500	11 800	10 850	12
14			9 050	8 350	9 400	8 100	9 600	97 00	9 600	8 450	9 550	8 350	9 400	8 750	9 200	9 050	14
16			7 000	6 300	7 350	6 100	7 550	7 650	7 600	6 400	7 500	6 350	7 350	6 700	7 150	7 000	16
18					5 850	4 650	6 050	6 150	6 050	5 000	6 000	4 950	5 850	5 250	5 750	5 550	18
20						3 550	4 950	5 050	5 000	3 900	4 950	3 850	4 800	4 150	4 600	4 450	20
22							4 050	4 150	4 100	3 000	4 050	2 950	3 900	3 300	3 700	3 550	22
24								3 400	3 400	2 300	3 350	2 300	3 200	2 600	3 000	2 850	24
26									2 800	1 750	2 750	1 700	2 600	2 000	2 450	2 300	26
28									2 300	1 250	2 250	1 250	2 100	1 550	1 950	1 800	28
30											1 850	800	1 700	1 150	1 550	1 400	30
32												450	1 350	800	1 200	1 050	32
34													1 050	450	900	750	34
36															600	500	36

* Special Conditions Or Wire Rope Required

This information is not for crane operation. Operator must refer to the in-cab information for crane operation. Rated lifting capacities shown meet ISO 4305 standards.

5 216kg Counterweight – Fully Extended Outriggers – 360° Rotation
 (All Capacities Are Listed In Kilograms)

Radius (m)	Boom Length (m)															Radius (m)	
	11.58	15.2/15.5	18.3	19.4	21.3	23.32	24.4	27.4	30.5	31.09	33.5	35.3	36.6	38.8	39.6		42.67
3	71 100	69 550*	43 700	53 450													3
3.5	62 600	63 450*	41 500	50 350													3.5
4	54 600	55 550*	38 900	48 900	40 850	37 400	32 200										4
4.5	48 250	49 200*	36 550	48 350	39 100	35 750	30 950	26 150									4.5
5	43 100	44100*	34 600	44 250	37 450	35 250	29 450	25 450									5
6	35 250	36 250*	31 050	36 450	35 950	34 700	28 950	25 200	22 250	21 100	19 250						6
7	29 550	30 600*	28 200	30 800	34 600	30 600	28 950	24 750	21 150	20 900	19 250						7
8	22 800	24 150*	25 050	24 400	32 150	24 100	25 000	20 100	20 100	20 650	18 800	16 400	14 950	13 400	12 150		8
9	18 150	19 850	20 350	19 750	30 000	19 450	20 300	18 650	19 350	19 800	17 550	16 250	14 200	13 300	12 000	11 050	9
10		16 500	16 950	16 400	25 150	16 150	16 950	16 950	16 700	16 500	16 450	16 100	14 050	13 200	11 900	10 950	10
12		11 900	12 400	11 900	20 450	11 650	12 800	12 800	12 750	11 950	12 550	11 900	12 750	12 250	11 800	10 850	12
14			9 700	9 000	17 200	8 800	10 250	10 300	10 250	9 100	10 200	9 050	10 050	9 400	9 850	9 700	14
16			7 600	6 950	12 700	6 750	8 200	8 250	8 200	7 050	8 150	7 000	8 000	7 350	7 800	7 650	16
18					10 050	5 200	6 600	6 700	6 650	5 550	6 600	5 500	6 400	5 750	6 250	6 050	18
20					7 950	4 050	5 450	5 550	5 450	4 350	5 400	4 300	5 250	4 650	5 100	4 950	20
22					6 400		4 450	4 600	4 550	3 450	4 500	3 400	4 350	3 700	4 150	4 000	22
24								3 800	3 800	2 700	3 750	2 650	3 600	3 000	3 400	3 250	24
26									3 150	2 100	3 100	2 050	2 950	2 400	2 800	2 650	26
28									2 600	1 600	2 600	1 550	2 450	1 850	2 300	2 150	28
30											2 150	1 150	2 000	1 450	1 850	1 700	30
32												750	1 650	1 050	1 500	1 350	32
34													1 300	750	1 150	1 000	34
36														450	850	700	36
38																450	38

* Special Conditions Or Wire Rope Required

This information is not for crane operation. Operator must refer to the in-cab information for crane operation. Rated lifting capacities shown meet ISO 4305 standards.

0kg Counterweight – On Tires – Stationary – Boom Centered Over Rear
(All Capacities Are Listed In Kilograms)

Radius (m)	Boom Length (m)							Radius (m)
	11.58	15.2	18.3	21.3	24.4	27.4	30.5	
3	7 500							3
3.5	6 700	7 350						3.5
4	6 000	6 650						4
4.5	5 350	6 050	6 400					4.5
5	4 800	5 550	5 900					5
6	3 800	4 600	5 000	5 200				6
7	2 950	3 800	4 200	4 400				7
8	2 250	3 100	3 550	3 750	3 900			8
9	1 600	2 500	3 000	3 200	3 350	3 400	3 400	9
10		2 000	2 500	2 700	2 850	2 950	2 900	10
12		1 200	1 700	1 900	2 100	2 150	2 150	12
14			1 050	1 300	1 450	1 550	1 500	14
16			500	800	950	1 050	1 000	16
18				350	500	600	600	18

0kg Counterweight – On Tires – Pick & Carry (1.6km/h) – Boom Centered Over Rear
(All Capacities Are Listed In Kilograms)

Radius (m)	Boom Length (m)				Radius (m)
	11.58	15.2	18.3	21.3	
3	3 950				3
3.5	3 400	4 000			3.5
4	2 850	3 550			4
4.5	2 400	3 100	3 450		4.5
5	1 950	2 700	3 050		5
6	1 200	2 000	2 400	2 600	6
7	550	1 400	1 850	2 050	7
8		900	1 350	1 550	8
9		500	950	1 150	9
10			600	800	10

This information is not for crane operation. Operator must refer to the in-cab information for crane operation. Rated lifting capacities shown meet ISO 4305 standards.

Main Boom Lift Capacity Charts – Optional

14 742kg Counterweight – Fully Extended Outriggers – 360° Rotation (All Capacities Are Listed In Kilograms)																	
Radius (m)	Boom Length (m)																Radius (m)
	11.58	15.2/15.5	18.3	19.4	21.3	23.32	24.4	27.4	30.5	31.09	33.5	35.3	36.6	38.8	39.6	42.67	
2.44	81 600																2.44
3	72 400	69 550*	43 700	53 450	40 850												3
3.5	66 550	64 300*	41 500	50 350	39 100												3.5
4	61 000	59 950*	38 900	48 900	37 450	37 400	32 200										4
4.5	55 050	55 950*	36 550	48 350	35 950	35 750	30 950	26 150									4.5
5	49 250	50 200*	34 600	47 000	34 600	35 250	29 450	26 150									5
6	40 450	41 400*	31 050	41 600	32 150	34 700	28 950	25 450	22 250	21 100	19 250						6
7	34 000	35 050*	28 200	35 250	30 000	34 700	28 950	25 200	21 150	20 900	19 250						7
8	29 150	30 200*	26 250	30 400	28 150	30 200	28 950	24 950	20 100	20 650	18 800	16 400	14 950	13 400	12 150		8
9	25 300	26 350*	24 650	26 600	26 550	26 450	27 100	24 700	19 350	20 500	17 550	16 250	14 200	13 300	12 000	11 050	9
10		23 200*	23 200	23 400	24 100	23 200	23 950	23 700	18 150	19 750	16 450	16 100	14 050	13 200	11 900	10 950	10
12		17 400	17 900	17 400	18 000	17 150	17 850	17 650	16 050	17 400	14 500	15 200	13 850	13 050	11 800	10 850	12
14			13 950	13 500	14 100	13 300	14 000	13 800	13 750	13 600	12 900	13 500	13 400	12 750	11 650	10 750	14
16			11 200	10 750	11 550	10 650	11 350	11 650	11 100	10 950	11 450	10 850	11 300	11 200	11 050	10 700	16
18					9 550	8 600	9 650	9 650	9 650	8 950	9 450	8 900	9 550	9 200	9 650	9 500	18
20						7 100	8 300	8 100	8 350	7 400	8 450	7 350	8 250	7 650	8 100	7 950	20
22							7 200	7 000	7 250	6 200	7 200	6 150	7 050	6 450	6 900	6 750	22
24								6 300	6 250	5 250	6 200	5 250	6 050	5 550	5 900	5 750	24
26									5 450	4 450	5 400	4 400	5 300	4 750	5 150	5 000	26
28									4 750	3 750	4 700	3 750	4 600	4 050	4 450	4 300	28
30											4 150	3 150	4 000	3 450	3 850	3 750	30
32												2 650	3 500	2 950	3 350	3 200	32
34													3 050	2 500	2 900	2 800	34
36														2 100	2 500	2 400	36
38																2 050	38
40																1 750	40

* Special Conditions Or Wire Rope Required

This information is not for crane operation. Operator must refer to the in-cab information for crane operation. Rated lifting capacities shown meet ISO 4305 standards.

17 917kg Counterweight – Fully Extended Outriggers – 360° Rotation																	
(All Capacities Are Listed In Kilograms)																	
Radius (m)	Boom Length (m)																Radius (m)
	11.58	15.2/15.5	18.3	19.4	21.3	23.32	24.4	27.4	30.5	31.09	33.5	35.3	36.6	38.8	39.6	42.67	
2.44	81 600																2.44
3	72 650	69 550*	43 700	53 450	33 300												3
3.5	66 800	64 300*	41 500	50 350	32 100												3.5
4	61 600	59 950*	38 900	48 900	32 100	37 400	32 200										4
4.5	56 750	56 100*	36 550	48 350	32 100	35 750	30 950	26 150									4.5
5	51 250	52 250*	34 600	47 000	32 050	35 250	29 450	26 150									5
6	42 100	43100	31 050	43 300	29 050	34 700	28 950	25 450	22 250	21 100	19 250						6
7	35 450	36 500*	28 200	36 700	26 600	34 700	28 950	25 200	21 150	20 900	19 250						7
8	30 450	31450	26 250	31 700	24 150	31 500	28 950	24 950	20 100	20 650	18 800	16 400	14 950	13 400	12 150		8
9	26 450	27 550*	24 650	27 750	22 050	27 600	28 000	24 700	19 350	20 500	17 550	16 250	14 200	13 300	12 000	11 050	9
10		24 350*	23 200	24 600	20 400	24 400	25 050	24 700	18 150	19 750	16 450	16 100	14 050	13 200	11 900	10 950	10
12		18 900*	19 700	19 200	17 600	18 950	19 700	19 450	16 050	17 550	14 500	15 200	13 850	13 050	11 800	10 850	12
14			15 450	14 950	15 400	14 800	15 500	15 250	14 350	15 050	12 900	13 550	13 400	12 750	11 650	10 750	14
16			12 200	12 000	12 400	11 850	12 550	12 350	12 300	12 150	11 600	12 050	12 150	11 700	11 050	10 700	16
18					10 650	9 700	10 400	10 750	10 200	10 050	10 550	9 950	10 400	10 300	10 050	10 100	18
20						8 050	9 050	9 100	9 000	8 400	8 900	8 350	8 750	8 650	9 050	8 900	20
22							7 750	7 750	7 750	7 050	7 800	7 000	7 900	7 300	7 750	7 600	22
24								6 650	7 000	6 000	7 000	5 950	6 850	6 250	6 700	6 550	24
26									6 150	5 150	6 100	5 150	5 950	5 450	5 800	5 700	26
28									5 400	4 400	5 400	4 400	5 250	4 700	5 100	4 950	28
30											4 750	3 750	4 600	4 050	4 450	4 350	30
32												3 200	4 050	3 500	3 900	3 800	32
34													3 600	3 050	3 450	3 300	34
36														2 600	3 000	2 900	36
38																2 500	38
40																2 200	40

* Special Conditions Or Wire Rope Required

This information is not for crane operation. Operator must refer to the in-cab information for crane operation. Rated lifting capacities shown meet ISO 4305 standards.

1 134-6 577kg Counterweight – On Tires – Stationary – Boom Centered Over Rear
(All Capacities Are Listed In Kilograms)

Radius (m)	Boom Length (m)							Radius (m)
	11.58	15.2	18.3	21.3	24.4	27.4	30.5	
3	6 400							3
3.5	5 700	6 350						3.5
4	5 050	5 750						4
4.5	4 450	5 200	5 600					4.5
5	3 850	4 800	5 100					5
6	2 950	3 700	4 000	4 350				6
7	2 200	3 000	3 400	3 600				7
8	1 550	2 400	2 850	3 050	3 150			8
9	950	1 850	2 350	2 550	2 700	2 750	2 750	9
10		1 400	1 900	2 100	2 250	2 350	2 300	10
12		650	1 150	1 400	1 550	1 600	1 600	12
14			550	800	950	1 050	1 050	14
16				350	500	600	550	16
18								18

1 134-6 577kg Counterweight – On Tires – Pick & Carry (1.6km/h) – Boom Centered Over Rear
(All Capacities Are Listed In Kilograms)

Radius (m)	Boom Length (m)				Radius (m)
	11.58	15.2	18.3	21.3	
3	2 850				3
3.5	2 300	2 950			3.5
4	1 850	2 550			4
4.5	1 400	2 150	2 500		4.5
5	1 050	1 800	2 150		5
6	350	1 150	1 550	1 750	6
7		650	1 050	1 300	7
8			650	850	8
9			500	500	9

This information is not for crane operation. Operator must refer to the in-cab information for crane operation. Rated lifting capacities shown meet ISO 4305 standards.

Fly Attachment Lift Capacity Charts – Optional

3 856kg Counterweight – Fully Extended Outriggers – 360° Rotation (All Capacities Are Listed In Kilograms)									
42.7m Main Boom Length									
Radius (ft)	10.7 ft Offset Fly				17.7 ft Offset Fly				Radius (ft)
	2°	15°	30°	45°	2°	15°	30°	45°	
12	5 500								12
14	5 500	5 200			3 850				14
16	5 500	5 100			3 750				16
18	5 500	5 000	4 450		3 700	3 300			18
20	4 750	4 900	4 350	3 950	3 600	3 150			20
22	3 850	4 200	4 300	3 950	3 500	3 050			22
24	3 150	3 450	3 750	3 900	3 400	2 950	2 550		24
26	2 550	2 850	3 100	3 300	2 800	2 850	2 500	2 250	26
28	2 050	2 300	2 550	2 700	2 300	2 700	2 400	2 200	28
30	1 650	1 850	2 050	2 250	1 850	2 200	2 350	2 150	30
32	1 300	1 500	1 650	1 800	1 500	1 800	2 150	2 150	32
34	1 000	1 150	1 300	1 400	1 200	1 450	1 750	2 000	34
36	700	850	1 000	1 100	900	1 150	1 450	1 600	36
38	450	600	700	800	650	900	1 150	1 300	38
40			450	500	450	650	850	1 000	40
42						450	600	750	42
44							400	500	44

5 216kg Counterweight – Fully Extended Outriggers – 360° Rotation (All Capacities Are Listed In Kilograms)													
42.7m Main Boom Length													
Radius (ft)	10.7 ft Offset Fly				17.7 ft Offset Fly				22.6 ft Offset Fly				Radius (ft)
	2°	15°	30°	45°	2°	15°	30°	45°	2°	15°	30°	45°	
12	5 500												12
14	5 500	5 200			3 850								14
16	5 500	5 100			3 750				3 000				16
18	5 500	5 000	4 450		3 700	3 300			3 000				18
20	5 250	4 900	4 350	3 950	3 600	3 150			3 000	2 850			20
22	4 300	4 650	4 300	3 950	3 500	3 050			3 000	2 650			22
24	3 550	3 850	4 150	3 900	3 400	2 950	2 550		2 950	2 450	2 050		24
26	2 900	3 200	3 450	3 650	3 150	2 850	2 500	2 250	2 700	2 300	1 900	1 650	26
28	2 400	2 650	2 850	3 050	2 600	2 750	2 400	2 200	2 550	2 150	1 800	1 550	28
30	1 950	2 150	2 400	2 550	2 200	2 500	2 350	2 150	2 150	2 050	1 700	1 500	30
32	1 550	1 750	1 950	2 100	1 800	2 100	2 300	2 150	1 750	1 900	1 600	1 450	32
34	1 250	1 400	1 550	1 700	1 450	1 750	2 050	2 100	1 400	1 650	1 550	1 400	34
36	950	1 100	1 250	1 350	1 150	1 400	1 700	1 850	1 100	1 350	1 500	1 350	36
38	700	850	950	1 000	900	1 150	1 350	1 550	850	1 050	1 350	1 300	38
40	450	600	700	750	650	900	1 100	1 200	600	800	1 050	1 200	40
42		350	450		450	650	850	950	400	600	800	950	42
44						450	600	700		400	550	700	44
46							400	450			350	450	46

This information is not for crane operation. Operator must refer to the in-cab information for crane operation. Rated lifting capacities shown meet ISO 4305 standards.

14 742kg Counterweight – Fully Extended Outriggers – 360° Rotation
(All Capacities Are Listed In Kilograms)

42.7m Main Boom Length

Radius (ft)	10.7 ft Offset Fly				17.7 ft Offset Fly				Radius (ft)
	2°	15°	30°	45°	2°	15°	30°	45°	
12	5 500								12
14	5 500	5 200			3 850				14
16	5 500	5 100			3 750				16
18	5 500	5 000	4 450		3 700	3 300			18
20	5 400	4 900	4 350	3 950	3 600	3 150			20
22	5 300	4 750	4 300	3 950	3 500	3 050			22
24	5 150	4 650	4 200	3 900	3 400	2 950	2 550		24
26	5 000	4 550	4 150	3 900	3 300	2 850	2 500	2 250	26
28	4 550	4 350	4 050	3 850	3 200	2 750	2 400	2 200	28
30	3 950	4 150	3 900	3 750	3 100	2 700	2 350	2 150	30
32	3 450	3 650	3 700	3 600	2 950	2 600	2 300	2 150	32
34	3 000	3 150	3 350	3 450	2 800	2 550	2 250	2 100	34
36	2 600	2 750	2 900	3 000	2 650	2 400	2 200	2 100	36
38	2 300	2 400	2 500	2 600	2 450	2 300	2 150	2 050	38
40	1 950	2 100	2 200	2 200	2 150	2 200	2 050	1 950	40
42	1 700	1 800	1 850	1 900	1 850	2 050	1 950	1 900	42
44	1 450	1 550	1 600		1 600	1 800	1 900	1 850	44
46	1 250	1 300	1 350		1 400	1 550	1 700	1 750	46
48	1 050	1 100			1 200	1 300	1 450	1 450	48
50	850	900			1 000	1 100	1 200		50
52					850	900	1 000		52
54					700	750	800		54
56					550	600			56

This information is not for crane operation. Operator must refer to the in-cab information for crane operation. Rated lifting capacities shown meet ISO 4305 standards.

14 742kg Counterweight – Fully Extended Outriggers – 360° Rotation (All Capacities Are Listed In Kilograms)									
42.7m Main Boom Length									
Radius (ft)	22.6 ft Offset Fly				27.5 ft Offset Fly				Radius (ft)
	2°	15°	30°	45°	2°	15°	30°	45°	
16	3 000								16
18	3 000				2 350				18
20	3 000	2 850			2 350				20
22	3 000	2 650			2 350	2 100			22
24	2 950	2 450	2 050		2 200	1 950	1 650		24
26	2 700	2 300	1 900	1 650	2 050	1 800	1 550		26
28	2 550	2 150	1 800	1 550	1 850	1 650	1 400	1 250	28
30	2 350	2 050	1 700	1 500	1 750	1 550	1 300	1 200	30
32	2 200	1 900	1 600	1 450	1 600	1 400	1 250	1 100	32
34	2 100	1 800	1 550	1 400	1 500	1 300	1 150	1 050	34
36	1 950	1 700	1 500	1 350	1 400	1 250	1 050	950	36
38	1 850	1 650	1 400	1 300	1 300	1 150	1 000	900	38
40	1 750	1 550	1 350	1 250	1 200	1 050	950	850	40
42	1 650	1 500	1 300	1 200	1 100	1 000	900	800	42
44	1 550	1 400	1 250	1 150	1 050	950	850	750	44
46	1 350	1 350	1 200	1 150	1 000	900	800	750	46
48	1 100	1 250	1 200	1 150	900	850	750	700	48
50	950	1 050	1 150	1 100	850	800	700	650	50
52	750	850	950	1 000	750	750	650	650	52
54	600	700	800		600	700	650	600	54
56	450	550	600		450	550	600	600	56
58		400	400			400	450		58

This information is not for crane operation. Operator must refer to the in-cab information for crane operation. Rated lifting capacities shown meet ISO 4305 standards.

17 917kg Counterweight – Fully Extended Outriggers – 360° Rotation (All Capacities Are Listed In Kilograms)									
42.7m Main Boom Length									
Radius (ft)	10.7 ft Offset Fly				17.7 ft Offset Fly				Radius (ft)
	2°	15°	30°	45°	2°	15°	30°	45°	
12	5 500								12
14	5 500	5 200			3 850				14
16	5 500	5 100			3 750				16
18	5 500	5 000	4 450		3 700	3 300			18
20	5 400	4 900	4 350	3 950	3 600	3 150			20
22	5 300	4 750	4 300	3 950	3 500	3 050			22
24	5 150	4 650	4 200	3 900	3 400	2 950	2 550		24
26	5 000	4 550	4 150	3 900	3 300	2 850	2 500	2 250	26
28	4 700	4 350	4 050	3 850	3 200	2 750	2 400	2 200	28
30	4 450	4 150	3 900	3 750	3 100	2 700	2 350	2 150	30
32	4 000	3 950	3 700	3 600	2 950	2 600	2 300	2 150	32
34	3 550	3 700	3 550	3 500	2 800	2 550	2 250	2 100	34
36	3 100	3 250	3 400	3 400	2 650	2 400	2 200	2 100	36
38	2 750	2 850	3 000	3 050	2 550	2 300	2 150	2 050	38
40	2 400	2 550	2 600	2 650	2 400	2 200	2 050	1 950	40
42	2 100	2 200	2 300	2 300	2 300	2 100	1 950	1 900	42
44	1 850	1 950	2 000		2 000	2 000	1 900	1 850	44
46	1 600	1 700	1 700		1 800	1 950	1 850	1 800	46
48	1 400	1 450			1 550	1 700	1 800	1 800	48
50	1 200	1 250			1 350	1 450	1 550	1 550	50
52					1 150	1 250	1 300		52
54					1 000	1 050	1 100		54
56					850	900			56

This information is not for crane operation. Operator must refer to the in-cab information for crane operation. Rated lifting capacities shown meet ISO 4305 standards.

17 917kg Counterweight – Fully Extended Outriggers – 360° Rotation (All Capacities Are Listed In Kilograms)									
42.7m Main Boom Length									
Radius (ft)	22.6 ft Offset Fly				27.5 ft Offset Fly				Radius (ft)
	2°	15°	30°	45°	2°	15°	30°	45°	
16	3 000								16
18	3 000				2 350				18
20	3 000	2 850			2 350				20
22	3 000	2 650			2 350	2 100			22
24	2 950	2 450	2 050		2 200	1 950	1 650		24
26	2 700	2 300	1 900	1 650	2 050	1 800	1 550		26
28	2 550	2 150	1 800	1 550	1 850	1 650	1 400	1 250	28
30	2 350	2 050	1 700	1 500	1 750	1 550	1 300	1 200	30
32	2 200	1 900	1 600	1 450	1 600	1 400	1 250	1 100	32
34	2 100	1 800	1 550	1 400	1 500	1 300	1 150	1 050	34
36	1 950	1 700	1 500	1 350	1 400	1 250	1 050	950	36
38	1 850	1 650	1 400	1 300	1 300	1 150	1 000	900	38
40	1 750	1 550	1 350	1 250	1 200	1 050	950	850	40
42	1 650	1 500	1 300	1 200	1 100	1 000	900	800	42
44	1 600	1 400	1 250	1 150	1 050	950	850	750	44
46	1 500	1 350	1 200	1 150	1 000	900	800	750	46
48	1 450	1 300	1 200	1 150	900	850	750	700	48
50	1 300	1 250	1 150	1 100	850	800	700	650	50
52	1 100	1 200	1 150	1 100	800	750	650	650	52
54	900	1 000	1 100		800	700	650	600	54
56	750	850	900		750	700	600	600	56
58	600	700	700		600	650	600	600	58
60	450	550			450	550	600		60
62	300	400			350	400	450		62

This information is not for crane operation. Operator must refer to the in-cab information for crane operation. Rated lifting capacities shown meet ISO 4305 standards.

Link-Belt Construction Equipment Company Lexington, Kentucky www.linkbelt.com

®Link-Belt is a registered trademark. Copyright 2010. We are constantly improving our products and therefore reserve the right to change designs and specifications.